

Production Worksheet

Wilcom EmbroideryStudio - Designing



Design: **2**

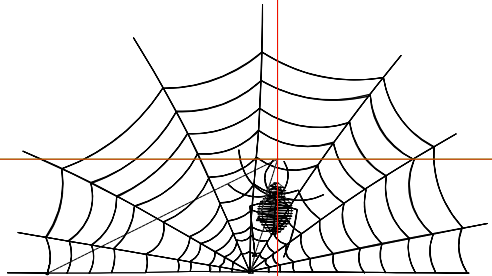
Title:

Stitches: 1,070
 Height: 1.40 in
 Width: 2.50 in
 Colors: 1
 Colorway: Colorway 1
 Zoom: 1:1

Machine format: Tajima
 Color changes: 0
 Stops: 1
 Trims: 3
 Appliqués: 0
 Left: 35.7 mm
 Right: 27.8 mm
 Up: 20.4 mm
 Down: 15.1 mm
 EndX: 0.00 in
 EndY: 0.00 in
 Area: 3.50 in²
 Max stitch: 6.1 mm
 Min stitch: 0.3 mm
 Max jump: 6.1 mm
 Total thread: 15.17ft
 Total bobbin: 4.64ft

Stop Sequence:

#	N#	Color	St.	Code	Name	Chart
1.	8		1,068	8	Black	Default



Production Worksheet

Wilcom EmbroideryStudio - Designing



Design: **3**

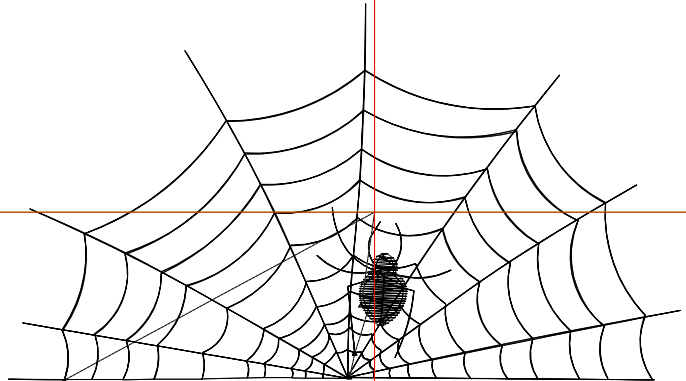
Title:

Stitches: 1,358
 Height: 1.96 in
 Width: 3.50 in
 Colors: 1
 Colorway: Colorway 1
 Zoom: 1:1

Machine format: Tajima
 Color changes: 0
 Stops: 1
 Trims: 3
 Appliqués: 0
 Left: 48.4 mm
 Right: 40.5 mm
 Up: 27.5 mm
 Down: 22.2 mm
 EndX: 0.00 in
 EndY: 0.00 in
 Area: 6.86 in²
 Max stitch: 6.8 mm
 Min stitch: 0.5 mm
 Max jump: 6.8 mm
 Total thread: 20.53ft
 Total bobbin: 6.69ft

Stop Sequence:

#	N#	Color	St.	Code	Name	Chart
1.	8		1,356	8	Black	Default



Production Worksheet

Wilcom EmbroideryStudio - Designing



Design: **4**

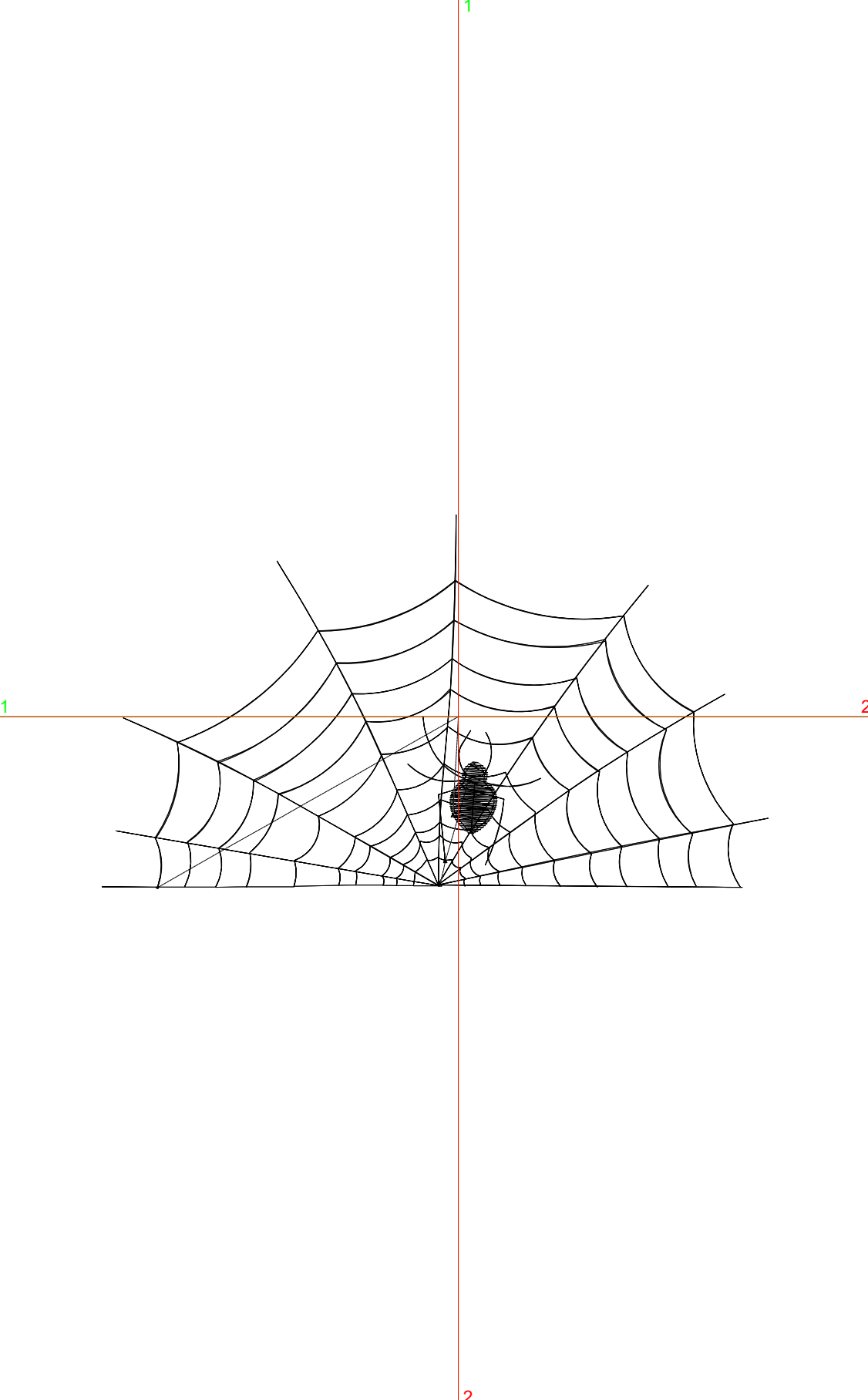
Title:

Stitches: 1,656
 Height: 2.52 in
 Width: 4.50 in
 Colors: 1
 Colorway: Colorway 1
 Zoom: 1:1

Machine format: Tajima
 Color changes: 0
 Stops: 1
 Trims: 3
 Appliqués: 0
 Left: 61.1 mm
 Right: 53.2 mm
 Up: 34.7 mm
 Down: 29.3 mm
 EndX: 0.00 in
 EndY: 0.00 in
 Area: 11.34 in²
 Max stitch: 7.0 mm
 Min stitch: 0.5 mm
 Max jump: 6.5 mm
 Total thread: 26.19ft
 Total bobbin: 8.88ft

Stop Sequence:

#	N#	Color	St.	Code	Name	Chart
1.	8		1,654	8	Black	Default



Production Worksheet

Wilcom EmbroideryStudio - Designing



Design: **5**

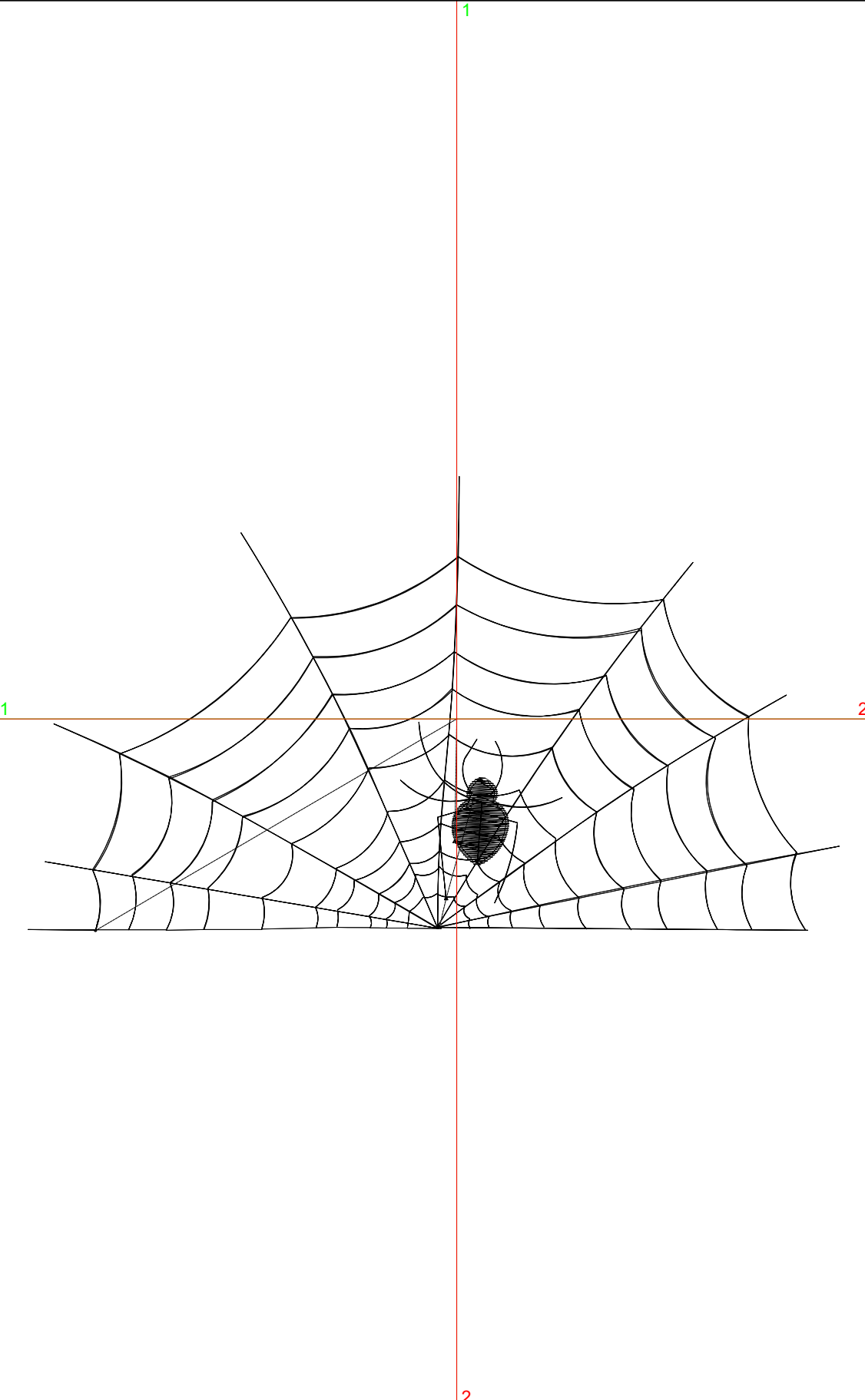
Title:

Stitches: 1,960
 Height: 3.08 in
 Width: 5.50 in
 Colors: 1
 Colorway: Colorway 1
 Zoom: 1:1

Machine format: Tajima
 Color changes: 0
 Stops: 1
 Trims: 3
 Appliqués: 0
 Left: 73.8 mm
 Right: 65.9 mm
 Up: 41.8 mm
 Down: 36.5 mm
 EndX: 0.00 in
 EndY: 0.00 in
 Area: 16.94 in²
 Max stitch: 7.0 mm
 Min stitch: 0.5 mm
 Max jump: 6.9 mm
 Total thread: 32.14ft
 Total bobbin: 11.23ft

Stop Sequence:

#	N#	Color	St.	Code	Name	Chart
1.	8		1,958	8	Black	Default



Production Worksheet

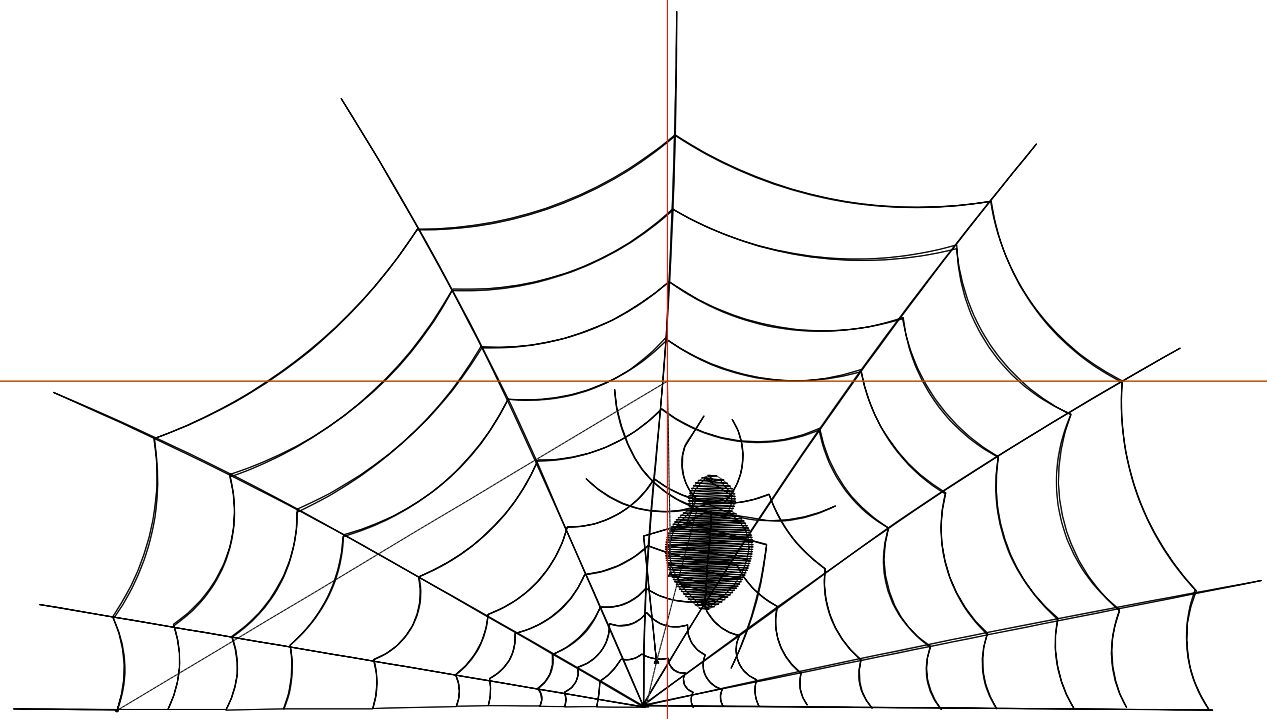
Wilcom EmbroideryStudio - Designing



Design: **6**

Title:

Stitches: 2,270
Height: 3.64 in
Width: 6.50 in
Colors: 1
Colorway: Colorway 1
Zoom: 1:1



Production Worksheet

Wilcom EmbroideryStudio - Designing



Design: **6**

Title:

Stitches: 2,270
 Height: 3.64 in
 Width: 6.50 in
 Colors: 1
 Colorway: Colorway 1
 Zoom: 1:1

Machine format: Tajima
 Color changes: 0
 Stops: 1
 Trims: 3
 Appliqués: 0
 Left: 86.5 mm
 Right: 78.6 mm
 Up: 48.9 mm
 Down: 43.6 mm
 EndX: 0.00 in
 EndY: 0.00 in
 Area 23.66 in²
 Max stitch: 6.8 mm
 Min stitch: 0.5 mm
 Max jump: 6.6 mm
 Total thread: 38.31ft
 Total bobbin: 13.68ft

Stop Sequence:

#	N#	Color	St.	Code	Name	Chart
1.	8	█	2,268	8	Black	Default

Production Worksheet

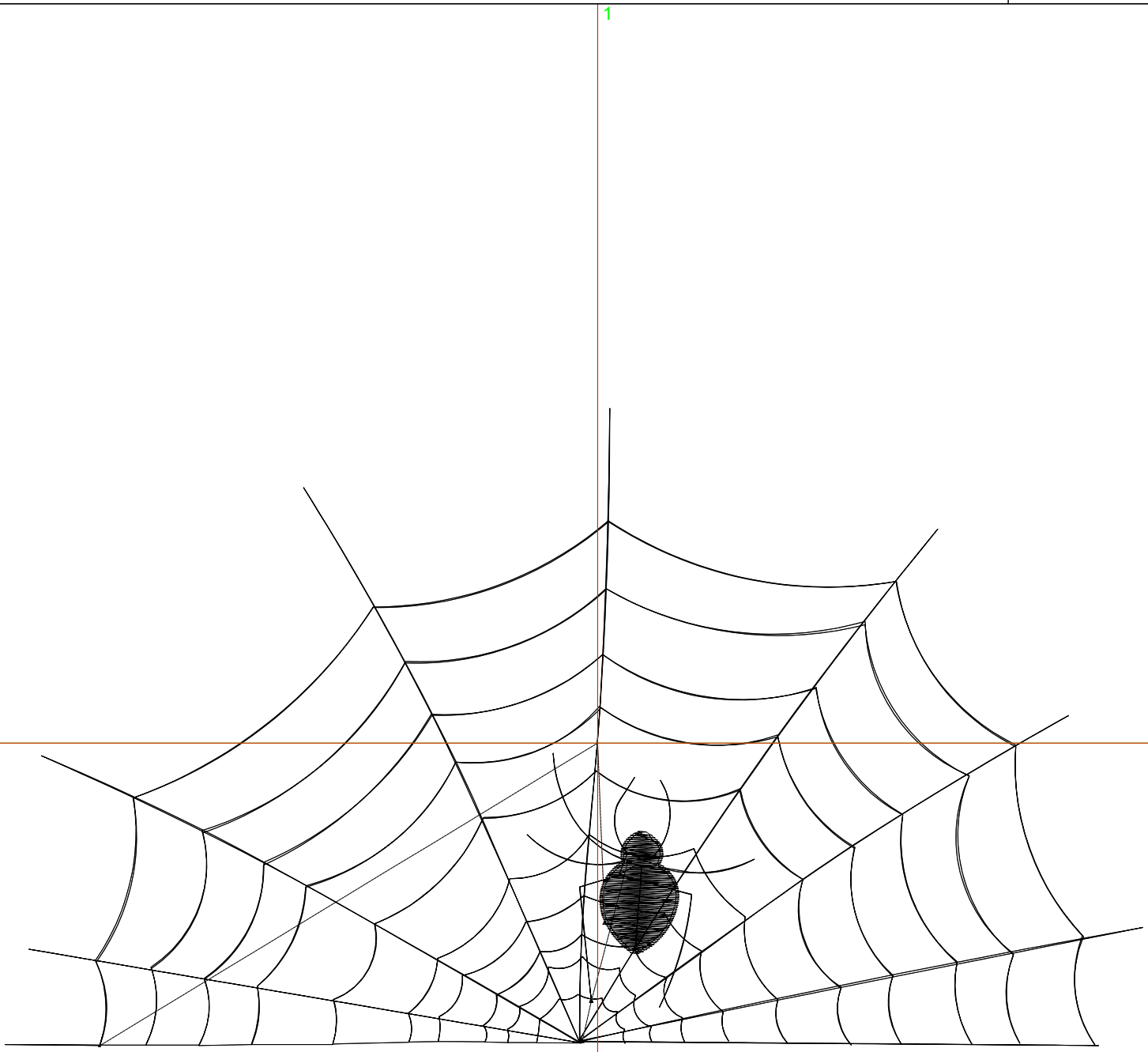
Wilcom EmbroideryStudio - Designing



Design: **7**

Title:

Stitches: 2,603
Height: 4.20 in
Width: 7.50 in
Colors: 1
Colorway: Colorway 1
Zoom: 1:1



Production Worksheet

Wilcom EmbroideryStudio - Designing



Design: **7**

Title:

Stitches: 2,603
 Height: 4.20 in
 Width: 7.50 in
 Colors: 1
 Colorway: Colorway 1
 Zoom: 1:1

Machine format: Tajima
 Color changes: 0
 Stops: 1
 Trims: 3
 Appliqués: 0
 Left: 99.2 mm
 Right: 91.3 mm
 Up: 56.0 mm
 Down: 50.7 mm
 EndX: 0.00 in
 EndY: 0.00 in
 Area 31.49 in²
 Max stitch: 7.0 mm
 Min stitch: 0.5 mm
 Max jump: 7.0 mm
 Total thread: 44.93ft
 Total bobbin: 16.31ft

Stop Sequence:

#	N#	Color	St.	Code	Name	Chart
1.	8	█	2,601	8	Black	Default