

# Production Worksheet

Wilcom EmbroideryStudio - Designing



Design: **3**

Title:

Stitches: 23,121  
 Height: 3.50 in  
 Width: 3.37 in  
 Colors: 7  
 Colorway: Colorway 1  
 Zoom: 1:1

Machine format: Tajima  
 Color changes: 6  
 Stops: 7  
 Trims: 101  
 Appliqués: 0  
 Left: 18.7 mm  
 Right: 66.9 mm  
 Up: 36.4 mm  
 Down: 52.4 mm  
 EndX: -0.30 in  
 EndY: -1.29 in  
 Area: 11.78 in<sup>2</sup>  
 Max stitch: 7.0 mm  
 Min stitch: 0.0 mm  
 Max jump: 7.0 mm  
 Total thread: 306.35ft  
 Total bobbin: 90.28ft

Stop Sequence:

#	N#	Color	St.	Code	Name	Chart
1.	5		1,397		R209 G207 B209	
2.	1		3,552		R255 G84 B153	
3.	4		546		R235 G40 B66	
4.	3		3,011		R110 G65 B153	
5.	2		2,242		R59 G28 B97	
6.	9		2,671	9	White	Default
7.	8		9,700	8	Black	Default



# Production Worksheet

Wilcom EmbroideryStudio - Designing



Design: **4**

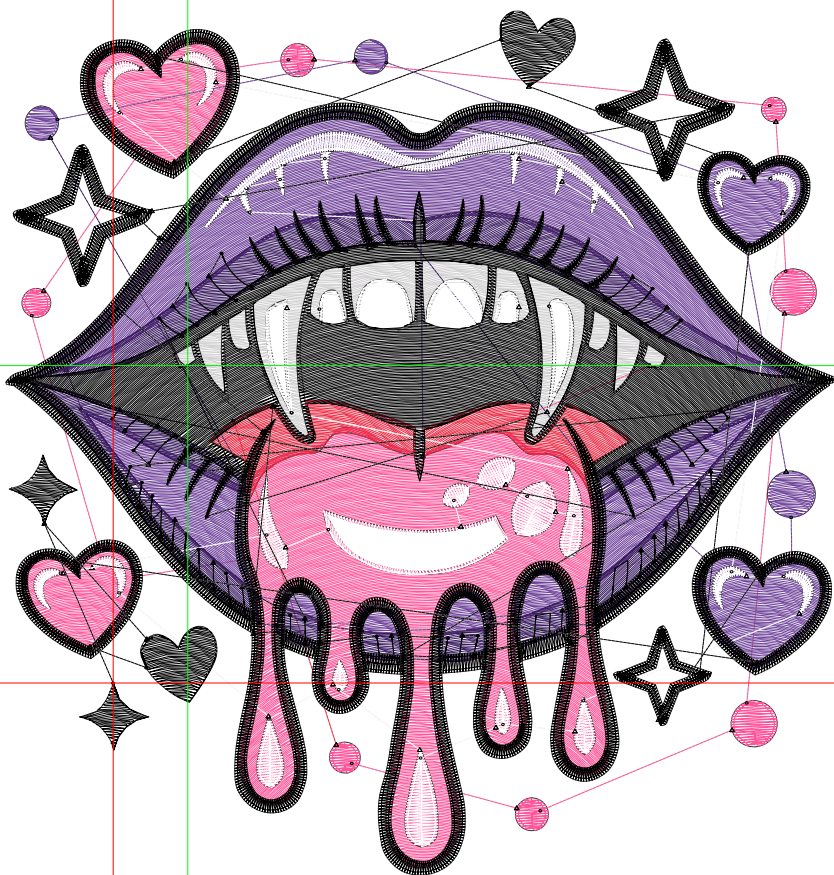
Title:

Stitches: 32,020  
 Height: 4.50 in  
 Width: 4.33 in  
 Colors: 7  
 Colorway: Colorway 1  
 Zoom: 1:1

Machine format: Tajima  
 Color changes: 6  
 Stops: 7  
 Trims: 130  
 Appliqués: 0  
 Left: 24.1 mm  
 Right: 86.0 mm  
 Up: 46.8 mm  
 Down: 67.4 mm  
 EndX: -0.39 in  
 EndY: -1.65 in  
 Area: 19.47 in<sup>2</sup>  
 Max stitch: 6.9 mm  
 Min stitch: 0.0 mm  
 Max jump: 6.9 mm  
 Total thread: 454.03ft  
 Total bobbin: 143.19ft

Stop Sequence:

#	N#	Color	St.	Code	Name	Chart
1.	5		1,947		R209 G207 B209	
2.	1		5,206		R255 G84 B153	
3.	4		760		R235 G40 B66	
4.	3		4,476		R110 G65 B153	
5.	2		3,270		R59 G28 B97	
6.	9		3,412	9	White	Default
7.	8		12,947	8	Black	Default



# Production Worksheet

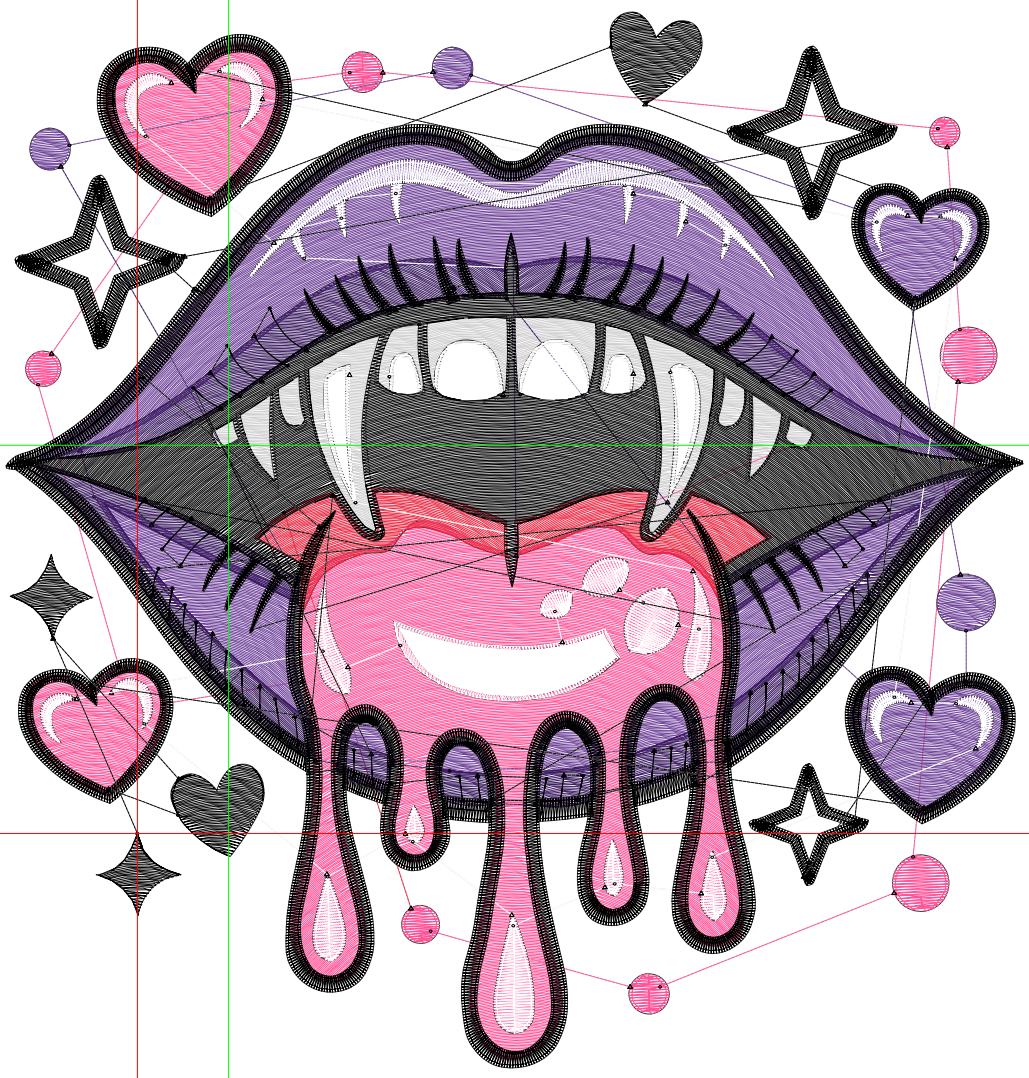
Wilcom EmbroideryStudio - Designing



Design: **5**

Title:

Stitches: 42,119  
Height: 5.50 in  
Width: 5.29 in  
Colors: 7  
Colorway: Colorway 1  
Zoom: 1:1



# Production Worksheet

Wilcom EmbroideryStudio - Designing



Design: **5**

Title:

Stitches: 42,119  
 Height: 5.50 in  
 Width: 5.29 in  
 Colors: 7  
 Colorway: Colorway 1  
 Zoom: 1:1

Machine format: Tajima  
 Color changes: 6  
 Stops: 7  
 Trims: 140  
 Appliqués: 0  
 Left: 29.4 mm  
 Right: 105.0 mm  
 Up: 57.3 mm  
 Down: 82.4 mm  
 EndX: -0.48 in  
 EndY: -2.02 in  
 Area 29.11 in<sup>2</sup>  
 Max stitch: 7.5 mm  
 Min stitch: 0.0 mm  
 Max jump: 7.0 mm  
 Total thread: 630.54ft  
 Total bobbin: 208.52ft

Stop Sequence:

#	N#	Color	St.	Code	Name	Chart
1.	5		2,581		R209 G207 B209	
2.	1		7,244		R255 G84 B153	
3.	4		1,039		R235 G40 B66	
4.	3		6,303		R110 G65 B153	
5.	2		4,448		R59 G28 B97	
6.	9		4,190	9	White	Default
7.	8		16,312	8	Black	Default

# Production Worksheet

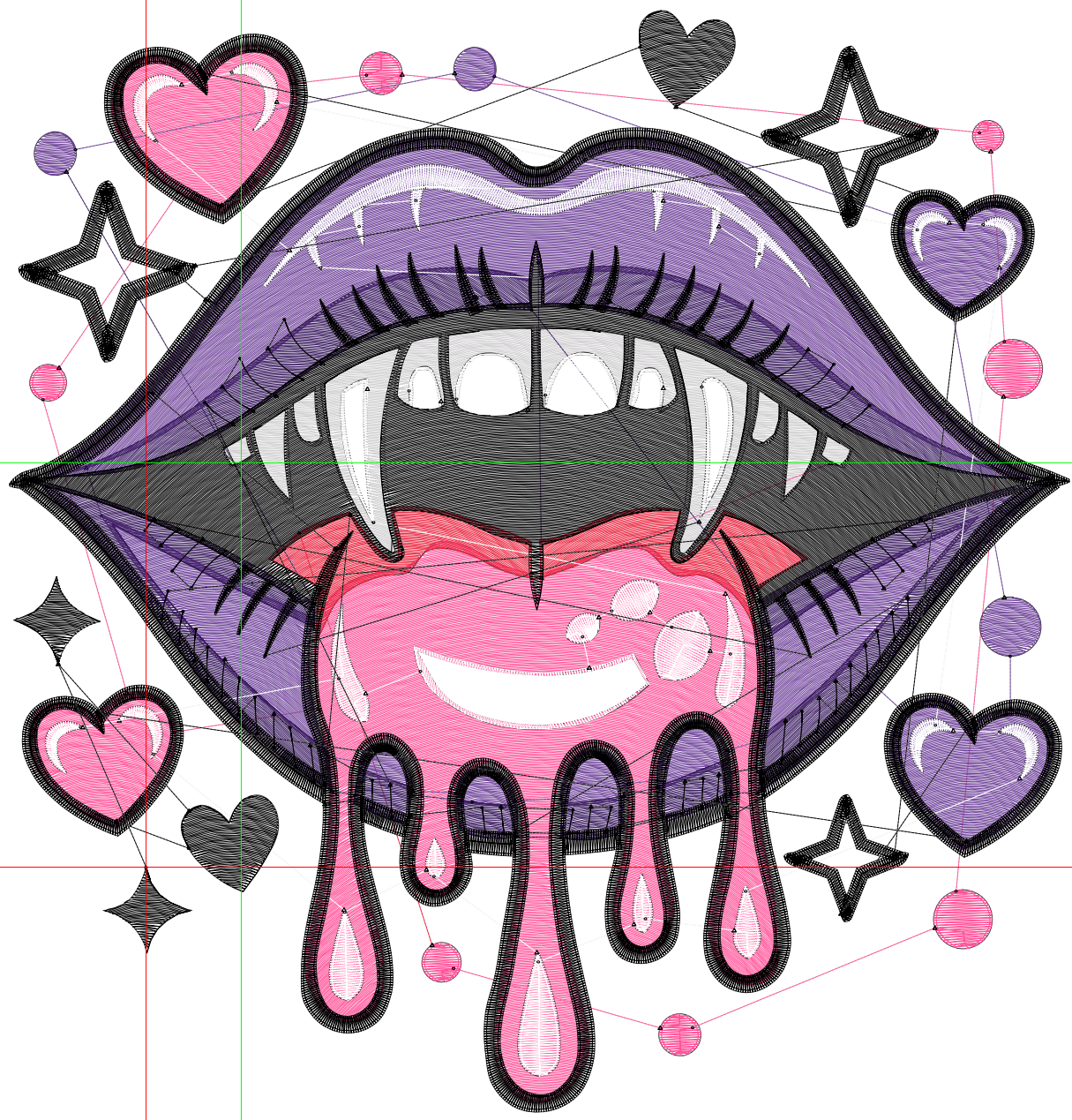
Wilcom EmbroideryStudio - Designing



Design: **6**

Title:

Stitches: 53,321  
Height: 6.50 in  
Width: 6.26 in  
Colors: 7  
Colorway: Colorway 1  
Zoom: 1:1



# Production Worksheet

Wilcom EmbroideryStudio - Designing



Design: **6**

Title:

Stitches: 53,321  
 Height: 6.50 in  
 Width: 6.26 in  
 Colors: 7  
 Colorway: Colorway 1  
 Zoom: 1:1

Machine format: Tajima  
 Color changes: 6  
 Stops: 7  
 Trims: 144  
 Appliqués: 0  
 Left: 34.8 mm  
 Right: 124.2 mm  
 Up: 67.8 mm  
 Down: 97.3 mm  
 EndX: -0.56 in  
 EndY: -2.39 in  
 Area 40.67 in<sup>2</sup>  
 Max stitch: 8.8 mm  
 Min stitch: 0.0 mm  
 Max jump: 7.0 mm  
 Total thread: 834.46ft  
 Total bobbin: 285.80ft

Stop Sequence:

#	N#	Color	St.	Code	Name	Chart
1.	5		3,316		R209 G207 B209	
2.	1		9,548		R255 G84 B153	
3.	4		1,336		R235 G40 B66	
4.	3		8,424		R110 G65 B153	
5.	2		5,765		R59 G28 B97	
6.	9		5,070	9	White	Default
7.	8		19,860	8	Black	Default

# Production Worksheet

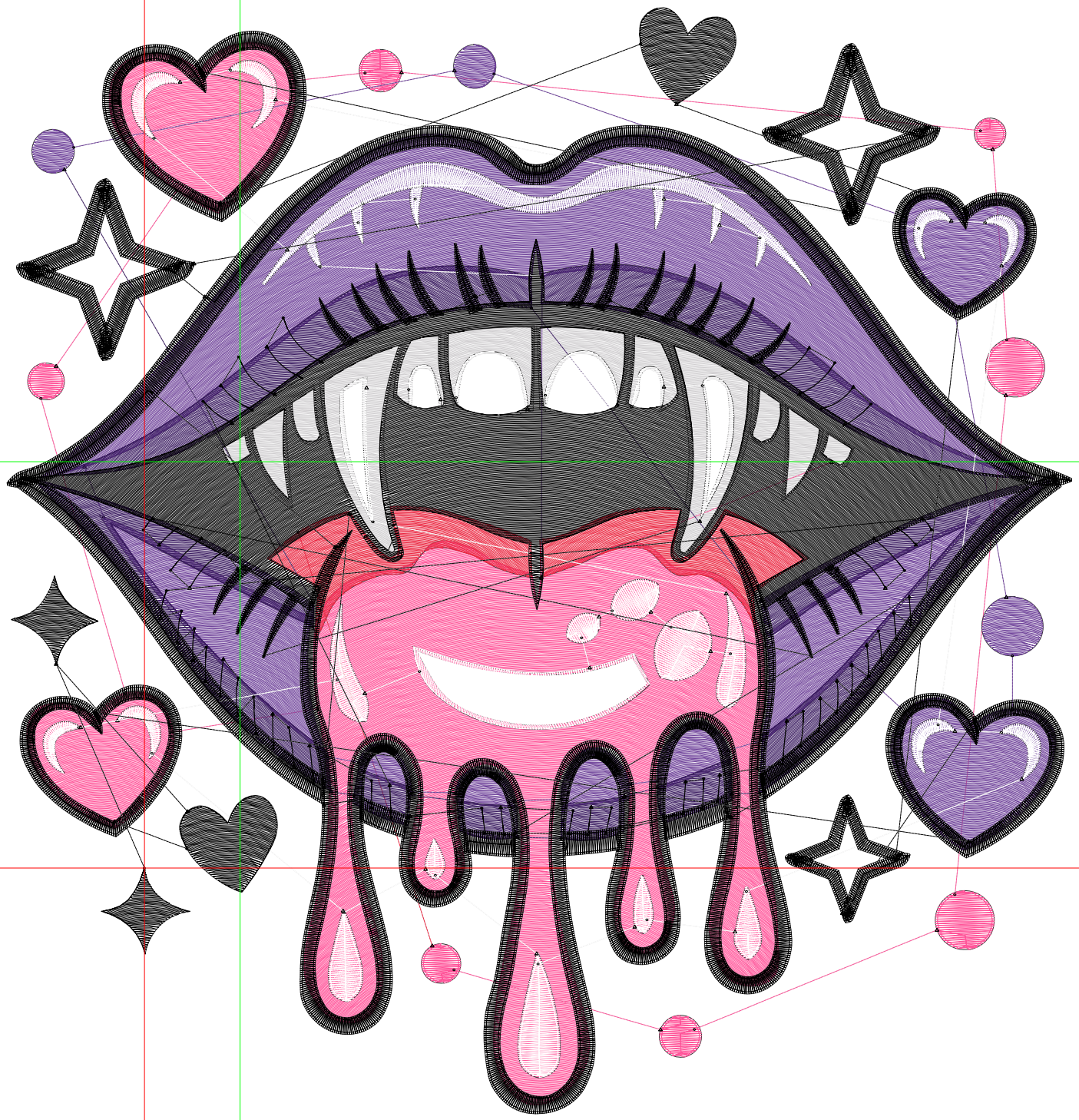
Wilcom EmbroideryStudio - Designing



Design: 7

Title:

Stitches: 65,587  
Height: 7.50 in  
Width: 7.22 in  
Colors: 7  
Colorway: Colorway 1  
Zoom: 1:1



# Production Worksheet

Wilcom EmbroideryStudio - Designing



Design: **7**

Title:

Stitches: 65,587  
 Height: 7.50 in  
 Width: 7.22 in  
 Colors: 7  
 Colorway: Colorway 1  
 Zoom: 1:1

Machine format: Tajima  
 Color changes: 6  
 Stops: 7  
 Trims: 144  
 Appliqués: 0  
 Left: 40.1 mm  
 Right: 143.3 mm  
 Up: 78.1 mm  
 Down: 112.3 mm  
 EndX: -0.65 in  
 EndY: -2.76 in  
 Area 54.13 in<sup>2</sup>  
 Max stitch: 10.2 mm  
 Min stitch: 0.0 mm  
 Max jump: 7.0 mm  
 Total thread: 1065.32ft  
 Total bobbin: 374.91ft

Stop Sequence:

#	N#	Color	St.	Code	Name	Chart
1.	5		4,089		R209 G207 B209	
2.	1		12,176		R255 G84 B153	
3.	4		1,708		R235 G40 B66	
4.	3		10,774		R110 G65 B153	
5.	2		7,309		R59 G28 B97	
6.	9		5,995	9	White	Default
7.	8		23,534	8	Black	Default