

Production Worksheet

Wilcom EmbroideryStudio - Designing



Design: **3**

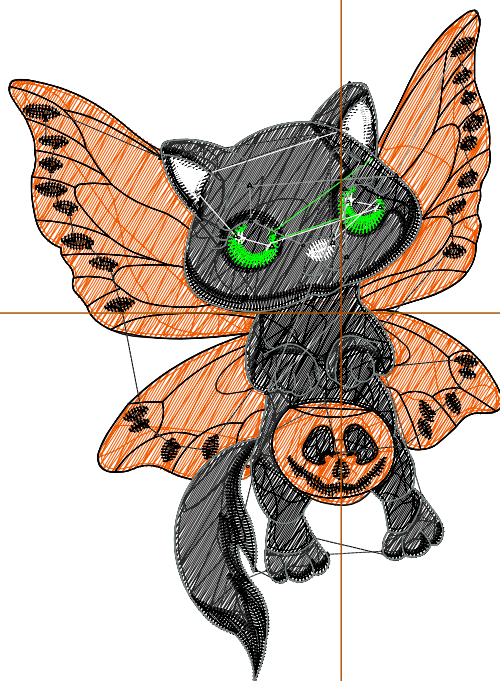
Title:

Stitches: 11,297
Height: 88.9 mm
Width: 65.2 mm
Colors: 6
Colorway: Colorway 1
Zoom: 1:1

Machine format: Tajima
Color changes: 6
Stops: 7
Trims: 65
Appliqués: 0
Left: 43.9 mm
Right: 21.4 mm
Up: 40.1 mm
Down: 48.8 mm
EndX: 0.0 mm
EndY: 0.0 mm
Area: 5798.8 mm²
Max stitch: 7.0 mm
Min stitch: 0.0 mm
Max jump: 7.0 mm
Total thread: 52.61m
Total bobbin: 17.37m

Stop Sequence:

#	N#	Color	St.	Code	Name	Chart
1.	2		2,593		R240 G89 B1	
2.	15		2,192		R41 G41 B41	
3.	8		2,949		R0 G0 B0	
4.	7		212		R0 G255 B0	
5.	9		254		R255 G255 B255	
6.	8		2,270		R0 G0 B0	
7.	5		825		R121 G133 B130	



Production Worksheet

Wilcom EmbroideryStudio - Designing



Design: **4**

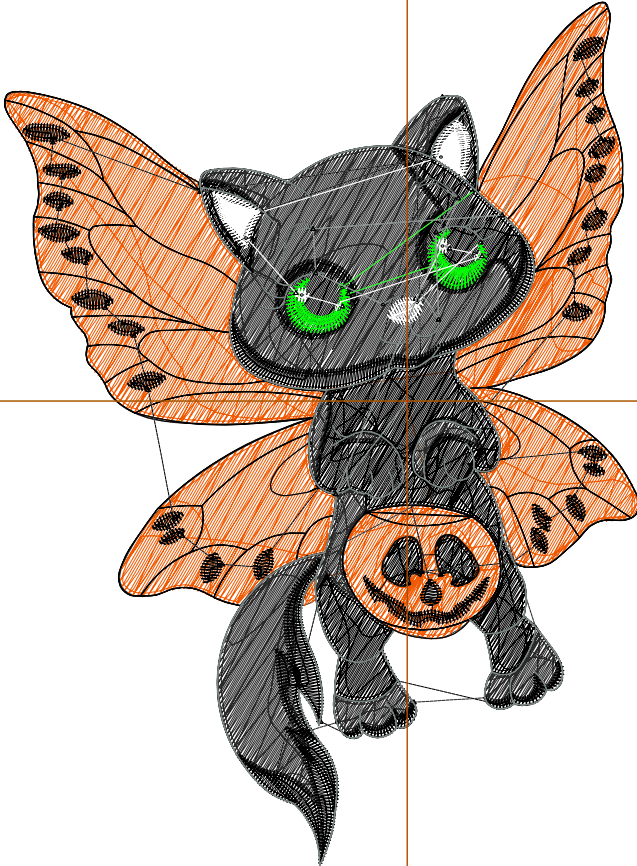
Title:

Stitches: 15,080
Height: 114.3 mm
Width: 83.9 mm
Colors: 6
Colorway: Colorway 1
Zoom: 1:1

Machine format: Tajima
Color changes: 6
Stops: 7
Trims: 68
Appliqués: 0
Left: 53.2 mm
Right: 30.7 mm
Up: 52.8 mm
Down: 61.5 mm
EndX: 0.0 mm
EndY: 0.0 mm
Area 9588.5 mm²
Max stitch: 8.9 mm
Min stitch: 0.0 mm
Max jump: 7.0 mm
Total thread: 76.17m
Total bobbin: 26.85m

Stop Sequence:

#	N#	Color	St.	Code	Name	Chart
1.	2		3,825		R240 G89 B1	
2.	15		3,109		R41 G41 B41	
3.	8		3,933		R0 G0 B0	
4.	7		255		R0 G255 B0	
5.	9		304		R255 G255 B255	
6.	8		2,693		R0 G0 B0	
7.	5		959		R121 G133 B130	



Production Worksheet

Wilcom EmbroideryStudio - Designing



Design: **5**

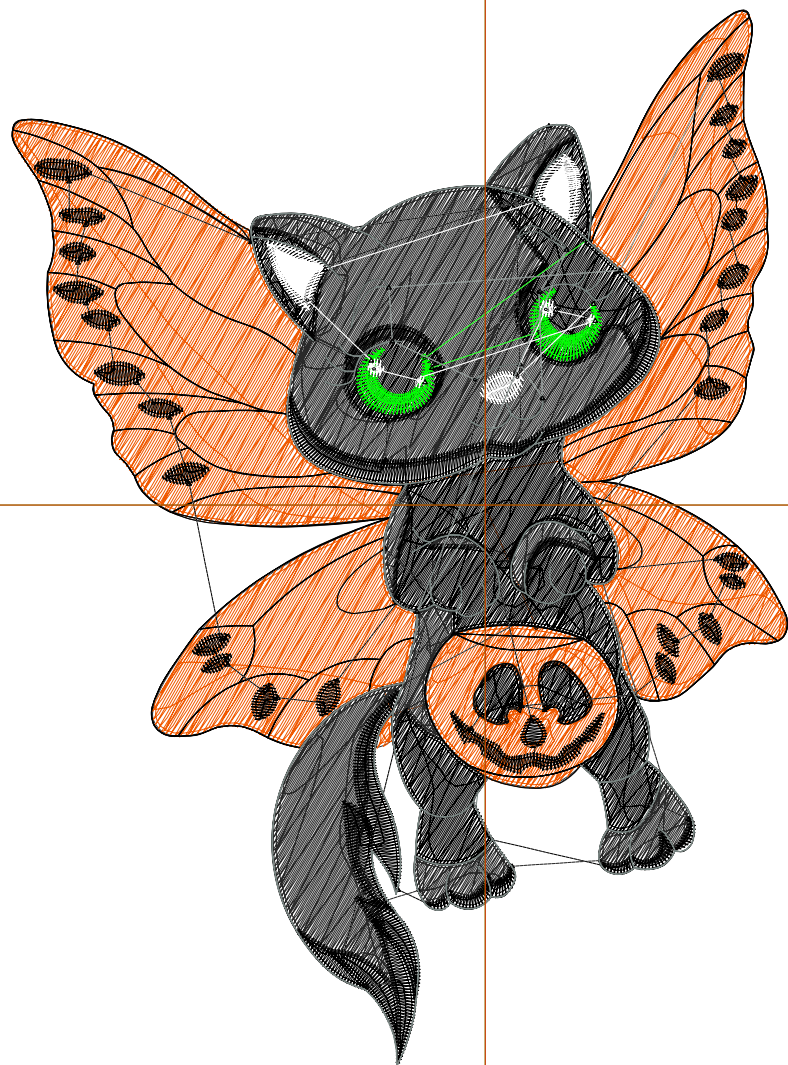
Title:

Stitches: 19,368
Height: 139.7 mm
Width: 102.6 mm
Colors: 6
Colorway: Colorway 1
Zoom: 1:1

Machine format: Tajima
Color changes: 6
Stops: 7
Trims: 71
Appliqués: 0
Left: 62.6 mm
Right: 40.0 mm
Up: 65.5 mm
Down: 74.2 mm
EndX: 0.0 mm
EndY: 0.0 mm
Area: 14323.8 mm²
Max stitch: 11.0 mm
Min stitch: 0.1 mm
Max jump: 6.9 mm
Total thread: 103.75m
Total bobbin: 38.11m

Stop Sequence:

#	N#	Color	St.	Code	Name	Chart
1.	2		5,223		R240 G89 B1	
2.	15		4,186		R41 G41 B41	
3.	8		5,047		R0 G0 B0	
4.	7		302		R0 G255 B0	
5.	9		372		R255 G255 B255	
6.	8		3,162		R0 G0 B0	
7.	5		1,074		R121 G133 B130	



Production Worksheet

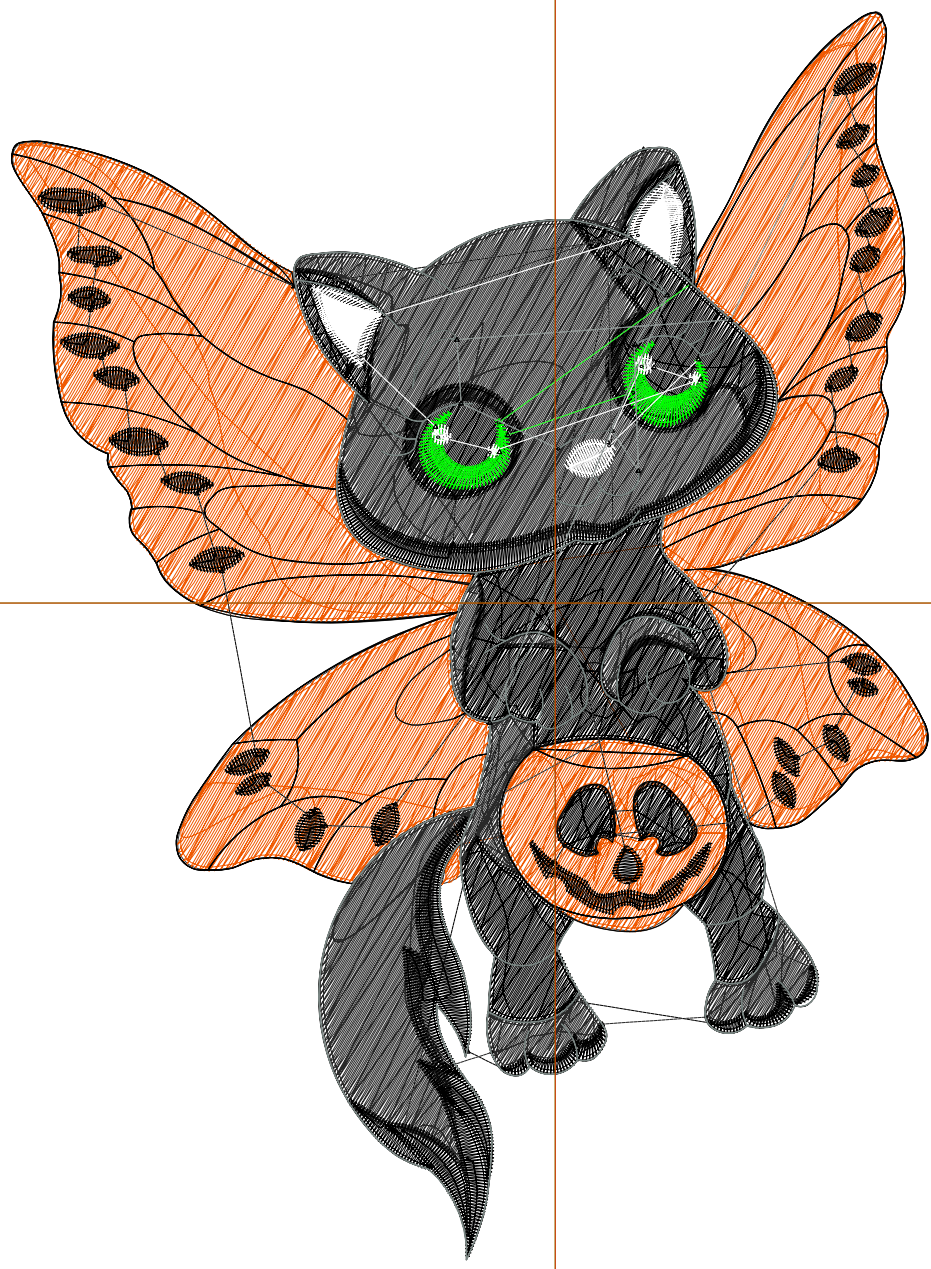
Wilcom EmbroideryStudio - Designing



Design: **6**

Title:

Stitches: 24,182
Height: 165.1 mm
Width: 121.3 mm
Colors: 6
Colorway: Colorway 1
Zoom: 1:1



Machine format: Tajima
Color changes: 6
Stops: 7
Trims: 72
Appliqués: 0
Left: 71.9 mm
Right: 49.3 mm
Up: 78.2 mm
Down: 86.9 mm
EndX: 0.0 mm
EndY: 0.0 mm
Area: 20013.7 mm²
Max stitch: 11.8 mm
Min stitch: 0.0 mm
Max jump: 7.0 mm
Total thread: 136.06m
Total bobbin: 51.55m

Stop Sequence:

#	N#	Color	St.	Code	Name	Chart
1.	2		6,851		R240 G89 B1	
2.	15		5,427		R41 G41 B41	
3.	8		6,264		R0 G0 B0	
4.	7		350		R0 G255 B0	
5.	9		445		R255 G255 B255	
6.	8		3,644		R0 G0 B0	
7.	5		1,199		R121 G133 B130	

Production Worksheet

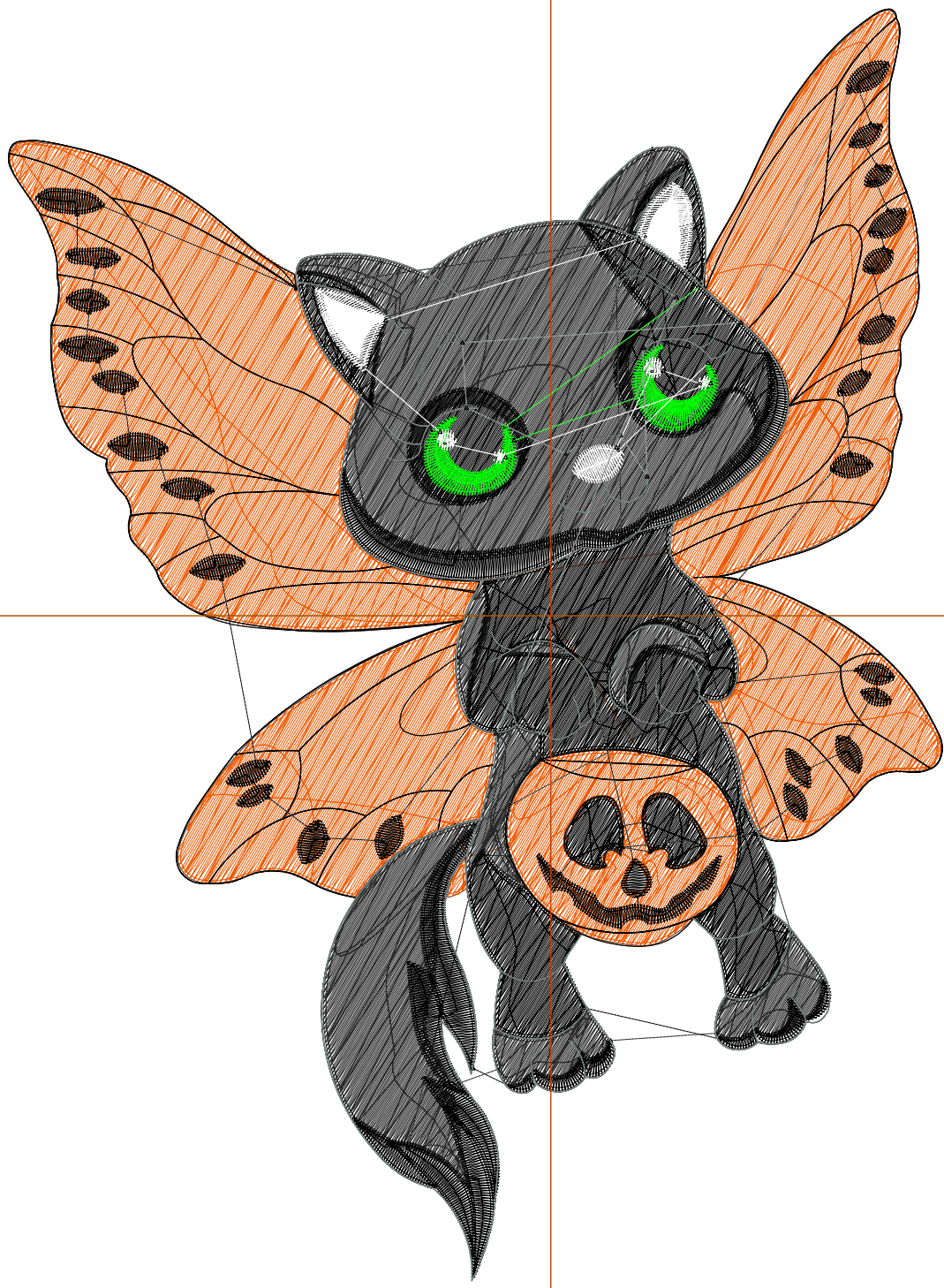
Wilcom EmbroideryStudio - Designing



Design: **7**

Title:

Stitches: 29,578
Height: 190.4 mm
Width: 139.9 mm
Colors: 6
Colorway: Colorway 1
Zoom: 1:1



1

1

2

2

Production Worksheet

Wilcom EmbroideryStudio - Designing



Design: **7**

Title:

Stitches: 29,578
 Height: 190.4 mm
 Width: 139.9 mm
 Colors: 6
 Colorway: Colorway 1
 Zoom: 1:1

Machine format: Tajima
 Color changes: 6
 Stops: 7
 Trims: 72
 Appliqués: 0
 Left: 81.3 mm
 Right: 58.6 mm
 Up: 90.8 mm
 Down: 99.6 mm
 EndX: 0.0 mm
 EndY: 0.0 mm
 Area: 26640.0 mm²
 Max stitch: 7.0 mm
 Min stitch: 0.0 mm
 Max jump: 7.0 mm
 Total thread: 172.74m
 Total bobbin: 66.90m

Stop Sequence:

#	N#	Color	St.	Code	Name	Chart
1.	2		8,757		R240 G89 B1	
2.	15		6,832		R41 G41 B41	
3.	8		7,656		R0 G0 B0	
4.	7		401		R0 G255 B0	
5.	9		530		R255 G255 B255	
6.	8		4,095		R0 G0 B0	
7.	5		1,305		R121 G133 B130	