

Production Worksheet

Wilcom EmbroideryStudio - Designing



Design: **3**

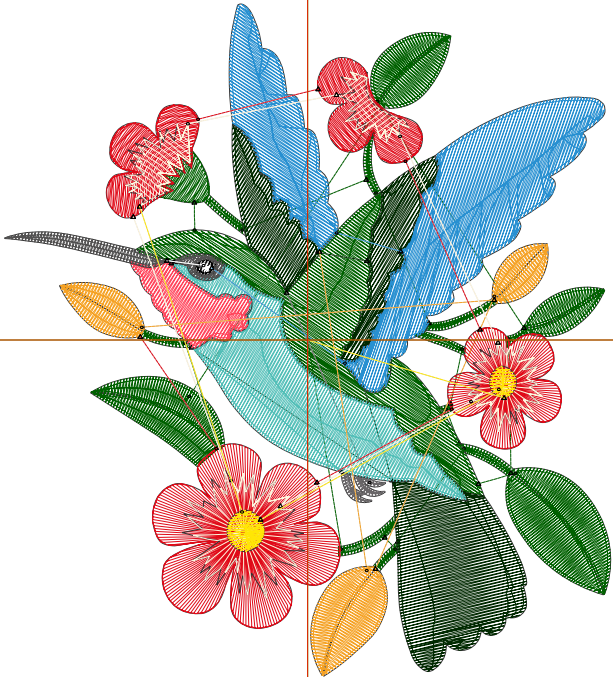
Title:

Stitches: 9,736
 Height: 3.50 in
 Width: 3.15 in
 Colors: 13
 Colorway: Colorway 1
 Zoom: 1:1

Machine format: Tajima
 Color changes: 12
 Stops: 13
 Trims: 37
 Appliqués: 0
 Left: 40.1 mm
 Right: 40.1 mm
 Up: 44.4 mm
 Down: 44.4 mm
 EndX: 0.00 in
 EndY: 0.00 in
 Area: 11.04 in²
 Max stitch: 7.0 mm
 Min stitch: 0.0 mm
 Max jump: 7.0 mm
 Total thread: 169.67ft
 Total bobbin: 60.16ft

Stop Sequence:

#	N#	Color	St.	Code	Name	Chart
1.	1		2,320	R0	G97 B0	
2.	2		1,248	R0	G41 B0	
3.	3		150	R105	G102 B104	
4.	4		603	R83	G191 B184	
5.	6		185	R255	G70 B92	
6.	8		31	8	Black	Default
7.	7		234	R82	G81 B81	
8.	9		29	9	White	Default
9.	5		1,721	R40	G144 B209	
10.	10		593	R245	G162 B37	
11.	11		1,998	R224	G10 B24	
12.	12		499	R255	G246 B221	
13.	13		123	R255	G230 B5	



Production Worksheet

Wilcom EmbroideryStudio - Designing



Design: **4**

Title:

Stitches: 13,575
 Height: 4.50 in
 Width: 4.06 in
 Colors: 13
 Colorway: Colorway 1
 Zoom: 1:1

Machine format: Tajima
 Color changes: 12
 Stops: 13
 Trims: 37
 Appliqués: 0
 Left: 51.5 mm
 Right: 51.5 mm
 Up: 57.1 mm
 Down: 57.1 mm
 EndX: 0.00 in
 EndY: 0.00 in
 Area: 18.24 in²
 Max stitch: 7.1 mm
 Min stitch: 0.0 mm
 Max jump: 7.0 mm
 Total thread: 257.05ft
 Total bobbin: 97.01ft

Stop Sequence:

#	N#	Color	St.	Code	Name	Chart
1.	1		3,085	R0	G97 B0	
2.	2		1,746	R0	G41 B0	
3.	3		182	R105	G102 B104	
4.	4		928	R83	G191 B184	
5.	6		289	R255	G70 B92	
6.	8		38	8	Black	Default
7.	7		300	R82	G81 B81	
8.	9		31	9	White	Default
9.	5		2,380	R40	G144 B209	
10.	10		773	R245	G162 B37	
11.	11		2,948	R224	G10 B24	
12.	12		721	R255	G246 B221	
13.	13		152	R255	G230 B5	



Production Worksheet

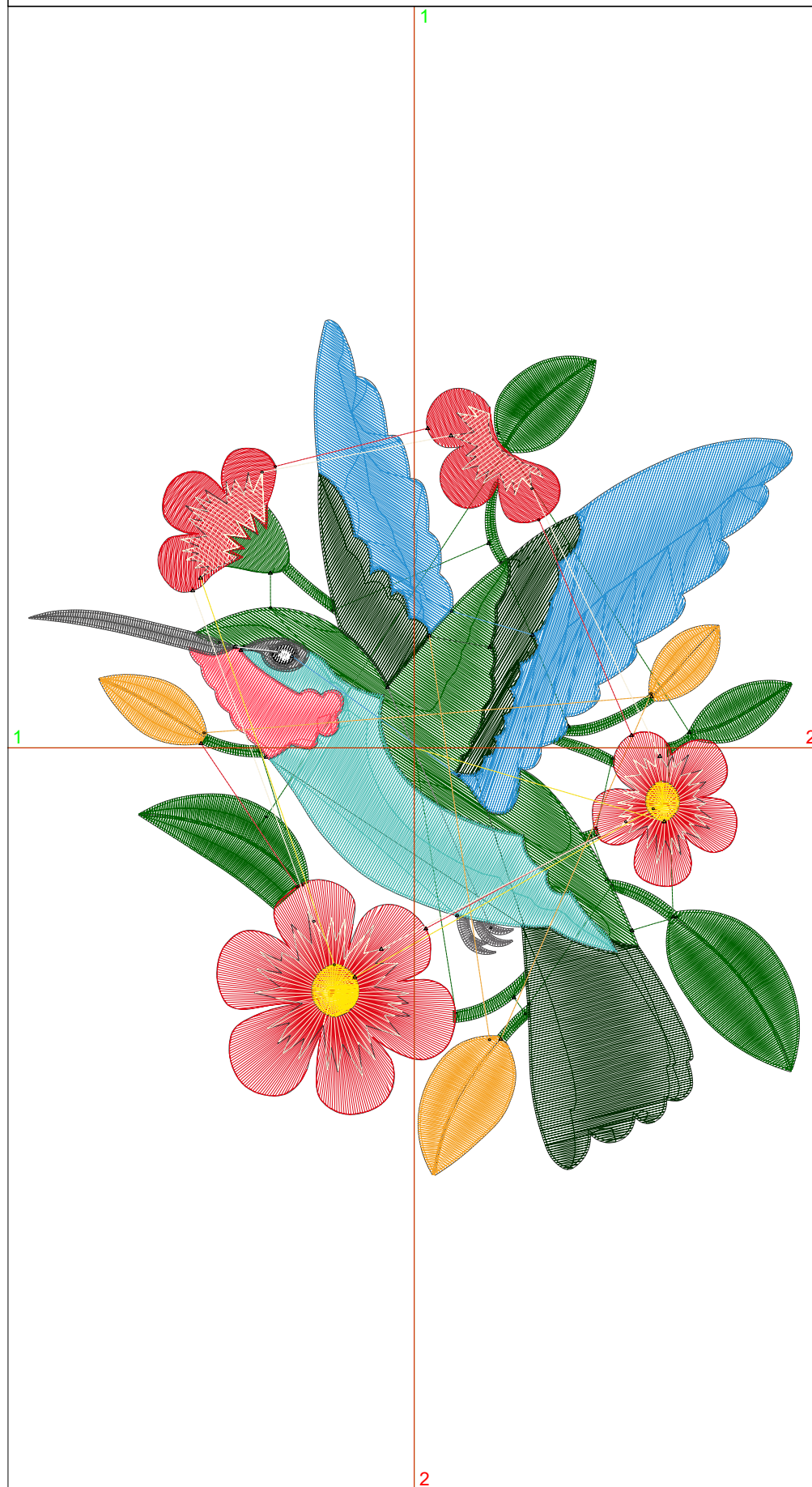
Wilcom EmbroideryStudio - Designing



Design: **5**

Title:

Stitches: 17,694
 Height: 5.50 in
 Width: 4.96 in
 Colors: 13
 Colorway: Colorway 1
 Zoom: 1:1



Machine format: Tajima
 Color changes: 12
 Stops: 13
 Trims: 38
 Appliqués: 0
 Left: 63.0 mm
 Right: 63.0 mm
 Up: 69.8 mm
 Down: 69.8 mm
 EndX: 0.00 in
 EndY: 0.00 in
 Area: 27.25 in²
 Max stitch: 8.8 mm
 Min stitch: 0.0 mm
 Max jump: 7.0 mm
 Total thread: 360.58ft
 Total bobbin: 142.35ft

Stop Sequence:

#	N#	Color	St.	Code	Name	Chart
1.	1		3,932	R0	G97 B0	
2.	2		2,340	R0	G41 B0	
3.	3		214	R105	G102 B104	
4.	4		1,209	R83	G191 B184	
5.	6		375	R255	G70 B92	
6.	8		45	8	Black	Default
7.	7		364	R82	G81 B81	
8.	9		33	9	White	Default
9.	5		3,149	R40	G144 B209	
10.	10		951	R245	G162 B37	
11.	11		4,057	R224	G10 B24	
12.	12		807	R255	G246 B221	
13.	13		216	R255	G230 B5	

Production Worksheet

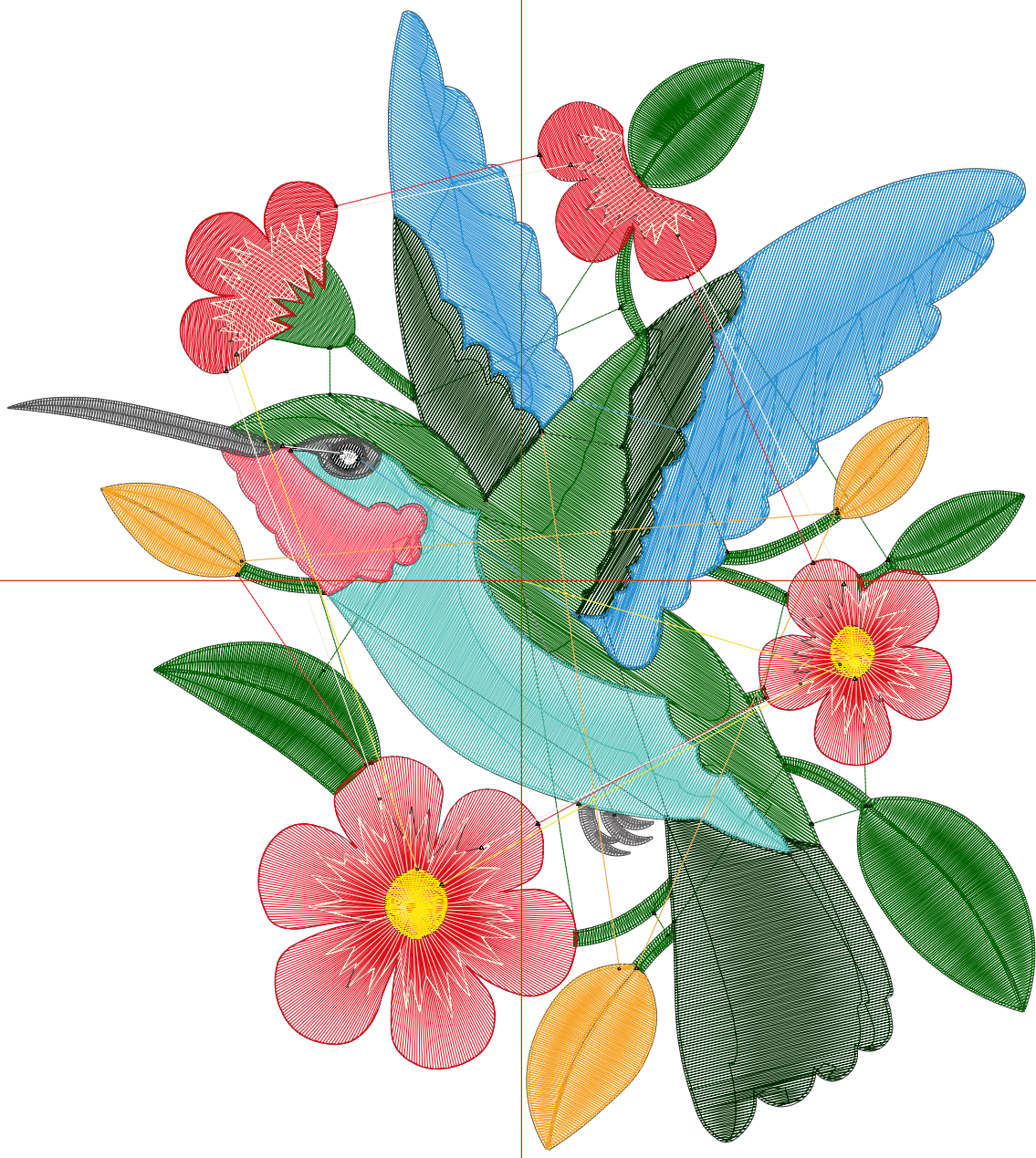
Wilcom EmbroideryStudio - Designing



Design: **6**

Title:

Stitches: 22,531
Height: 6.50 in
Width: 5.86 in
Colors: 13
Colorway: Colorway 1
Zoom: 1:1



Production Worksheet

Wilcom EmbroideryStudio - Designing



Design: **6**

Title:

Stitches: 22,531
 Height: 6.50 in
 Width: 5.86 in
 Colors: 13
 Colorway: Colorway 1
 Zoom: 1:1

Machine format: Tajima
 Color changes: 12
 Stops: 13
 Trims: 38
 Appliqués: 0
 Left: 74.4 mm
 Right: 74.4 mm
 Up: 82.5 mm
 Down: 82.5 mm
 EndX: 0.00 in
 EndY: 0.00 in
 Area 38.06 in²
 Max stitch: 10.4 mm
 Min stitch: 0.0 mm
 Max jump: 6.9 mm
 Total thread: 484.67ft
 Total bobbin: 197.08ft

Stop Sequence:

#	N#	Color	St.	Code	Name	Chart
1.	1		4,821		R0 G97 B0	
2.	2		3,018		R0 G41 B0	
3.	3		258		R105 G102 B104	
4.	4		1,651		R83 G191 B184	
5.	6		506		R255 G70 B92	
6.	8		52	8	Black	Default
7.	7		428		R82 G81 B81	
8.	9		37	9	White	Default
9.	5		3,917		R40 G144 B209	
10.	10		1,141		R245 G162 B37	
11.	11		5,300		R224 G10 B24	
12.	12		1,145		R255 G246 B221	
13.	13		255		R255 G230 B5	

Production Worksheet

Wilcom EmbroideryStudio - Designing



Design: **7**

Title:

Stitches: 27,609
Height: 7.50 in
Width: 6.76 in
Colors: 13
Colorway: Colorway 1
Zoom: 1:1



Production Worksheet

Wilcom EmbroideryStudio - Designing



Design: **7**

Title:

Stitches: 27,609
 Height: 7.50 in
 Width: 6.76 in
 Colors: 13
 Colorway: Colorway 1
 Zoom: 1:1

Machine format: Tajima
 Color changes: 12
 Stops: 13
 Trims: 38
 Appliqués: 0
 Left: 85.9 mm
 Right: 85.9 mm
 Up: 95.2 mm
 Down: 95.2 mm
 EndX: 0.00 in
 EndY: 0.00 in
 Area 50.68 in²
 Max stitch: 11.9 mm
 Min stitch: 0.0 mm
 Max jump: 7.0 mm
 Total thread: 623.30ft
 Total bobbin: 259.48ft

Stop Sequence:

#	N#	Color	St.	Code	Name	Chart
1.	1		5,811		R0 G97 B0	
2.	2		3,709		R0 G41 B0	
3.	3		290		R105 G102 B104	
4.	4		2,035		R83 G191 B184	
5.	6		623		R255 G70 B92	
6.	8		57	8	Black	Default
7.	7		494		R82 G81 B81	
8.	9		41	9	White	Default
9.	5		4,844		R40 G144 B209	
10.	10		1,325		R245 G162 B37	
11.	11		6,847		R224 G10 B24	
12.	12		1,202		R255 G246 B221	
13.	13		329		R255 G230 B5	