

# Production Worksheet

Wilcom EmbroideryStudio - Designing



Design: **3**

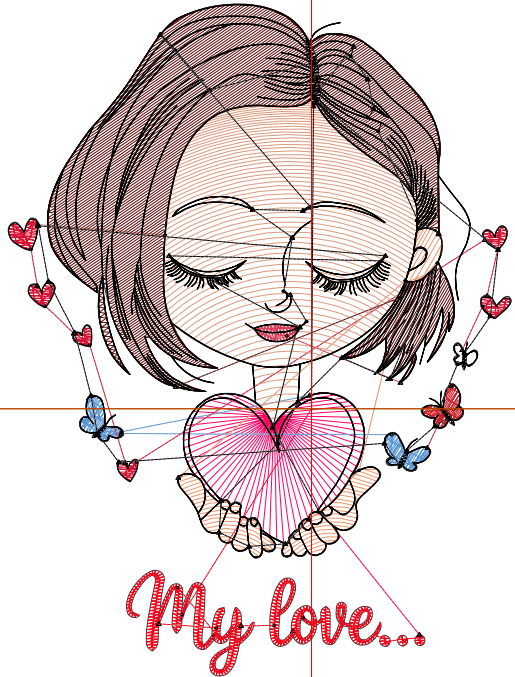
Title:

Stitches: 8,329  
 Height: 3.50 in  
 Width: 2.61 in  
 Colors: 11  
 Colorway: Colorway 1  
 Zoom: 1:1

Machine format: Tajima  
 Color changes: 10  
 Stops: 11  
 Trims: 61  
 Appliqués: 0  
 Left: 40.1 mm  
 Right: 26.3 mm  
 Up: 53.5 mm  
 Down: 35.4 mm  
 EndX: 0.00 in  
 EndY: 0.00 in  
 Area 9.15 in<sup>2</sup>  
 Max stitch: 6.8 mm  
 Min stitch: 0.0 mm  
 Max jump: 6.8 mm  
 Total thread: 115.20ft  
 Total bobbin: 33.74ft

Stop Sequence:

| #   | N# | Color | St.   | Code | Name           | Chart   |
|-----|----|-------|-------|------|----------------|---------|
| 1.  | 4  |       | 974   |      | R245 G8 B28    |         |
| 2.  | 2  |       | 283   |      | R255 G1 B103   |         |
| 3.  | 5  |       | 226   |      | R91 G151 B214  |         |
| 4.  | 11 |       | 101   |      | R204 G29 B40   |         |
| 5.  | 9  |       | 53    | 9    | White          | Default |
| 6.  | 7  |       | 380   |      | R214 G19 B51   |         |
| 7.  | 6  |       | 762   |      | R219 G153 B125 |         |
| 8.  | 10 |       | 298   |      | R237 G149 B105 |         |
| 9.  | 12 |       | 1,657 |      | R94 G10 B8     |         |
| 10. | 8  |       | 93    |      | R219 G61 B90   |         |
| 11. | 1  |       | 3,500 |      | R0 G0 B0       |         |



# Production Worksheet

Wilcom EmbroideryStudio - Designing



Design: **4**

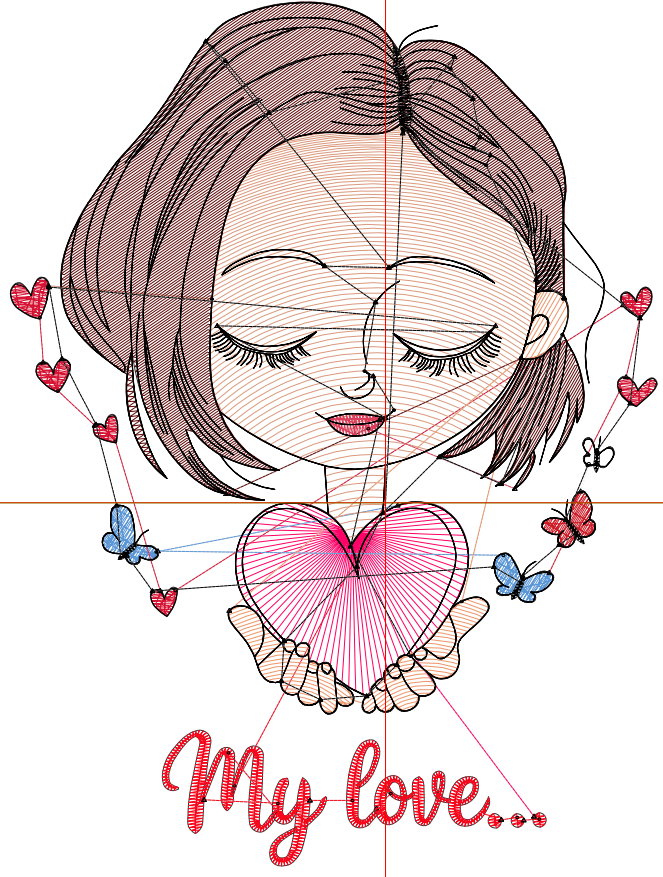
Title:

Stitches: 10,827  
 Height: 4.50 in  
 Width: 3.37 in  
 Colors: 11  
 Colorway: Colorway 1  
 Zoom: 1:1

Machine format: Tajima  
 Color changes: 10  
 Stops: 11  
 Trims: 65  
 Appliqués: 0  
 Left: 49.6 mm  
 Right: 35.9 mm  
 Up: 66.2 mm  
 Down: 48.0 mm  
 EndX: 0.00 in  
 EndY: 0.00 in  
 Area: 15.15 in<sup>2</sup>  
 Max stitch: 8.5 mm  
 Min stitch: 0.0 mm  
 Max jump: 7.0 mm  
 Total thread: 158.56ft  
 Total bobbin: 49.73ft

Stop Sequence:

| #   | N# | Color | St.   | Code | Name           | Chart   |
|-----|----|-------|-------|------|----------------|---------|
| 1.  | 4  |       | 1,228 |      | R245 G8 B28    |         |
| 2.  | 2  |       | 418   |      | R255 G1 B103   |         |
| 3.  | 5  |       | 299   |      | R91 G151 B214  |         |
| 4.  | 11 |       | 115   |      | R204 G29 B40   |         |
| 5.  | 9  |       | 67    | 9    | White          | Default |
| 6.  | 7  |       | 494   |      | R214 G19 B51   |         |
| 7.  | 6  |       | 1,203 |      | R219 G153 B125 |         |
| 8.  | 10 |       | 408   |      | R237 G149 B105 |         |
| 9.  | 12 |       | 2,404 |      | R94 G10 B8     |         |
| 10. | 8  |       | 110   |      | R219 G61 B90   |         |
| 11. | 1  |       | 4,079 |      | R0 G0 B0       |         |



# Production Worksheet

Wilcom EmbroideryStudio - Designing



Design: **5**

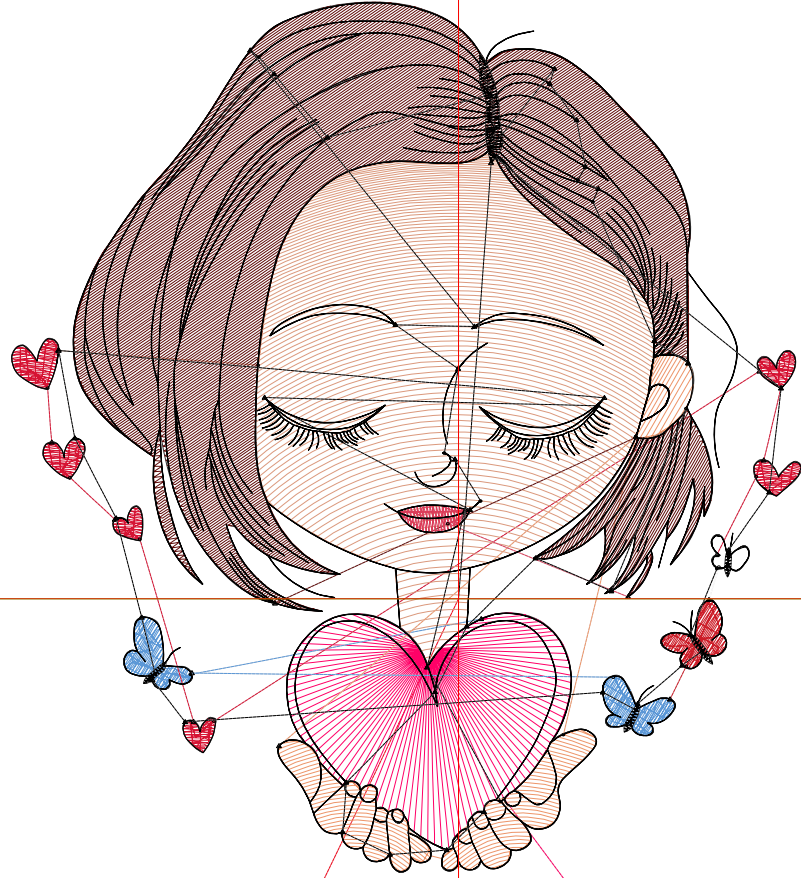
Title:

Stitches: 13,659  
 Height: 5.50 in  
 Width: 4.12 in  
 Colors: 11  
 Colorway: Colorway 1  
 Zoom: 1:1

Machine format: Tajima  
 Color changes: 10  
 Stops: 11  
 Trims: 67  
 Appliqués: 0  
 Left: 59.1 mm  
 Right: 45.4 mm  
 Up: 78.9 mm  
 Down: 60.7 mm  
 EndX: 0.00 in  
 EndY: 0.00 in  
 Area: 22.63 in<sup>2</sup>  
 Max stitch: 10.4 mm  
 Min stitch: 0.0 mm  
 Max jump: 7.0 mm  
 Total thread: 210.25ft  
 Total bobbin: 69.34ft

Stop Sequence:

| #   | N# | Color | St.   | Code | Name           | Chart   |
|-----|----|-------|-------|------|----------------|---------|
| 1.  | 4  |       | 1,508 |      | R245 G8 B28    |         |
| 2.  | 2  |       | 588   |      | R255 G1 B103   |         |
| 3.  | 5  |       | 369   |      | R91 G151 B214  |         |
| 4.  | 11 |       | 164   |      | R204 G29 B40   |         |
| 5.  | 9  |       | 85    | 9    | White          | Default |
| 6.  | 7  |       | 635   |      | R214 G19 B51   |         |
| 7.  | 6  |       | 1,723 |      | R219 G153 B125 |         |
| 8.  | 10 |       | 517   |      | R237 G149 B105 |         |
| 9.  | 12 |       | 3,311 |      | R94 G10 B8     |         |
| 10. | 8  |       | 142   |      | R219 G61 B90   |         |
| 11. | 1  |       | 4,615 |      | R0 G0 B0       |         |



*My love...*

# Production Worksheet

Wilcom EmbroideryStudio - Designing



Design: 6

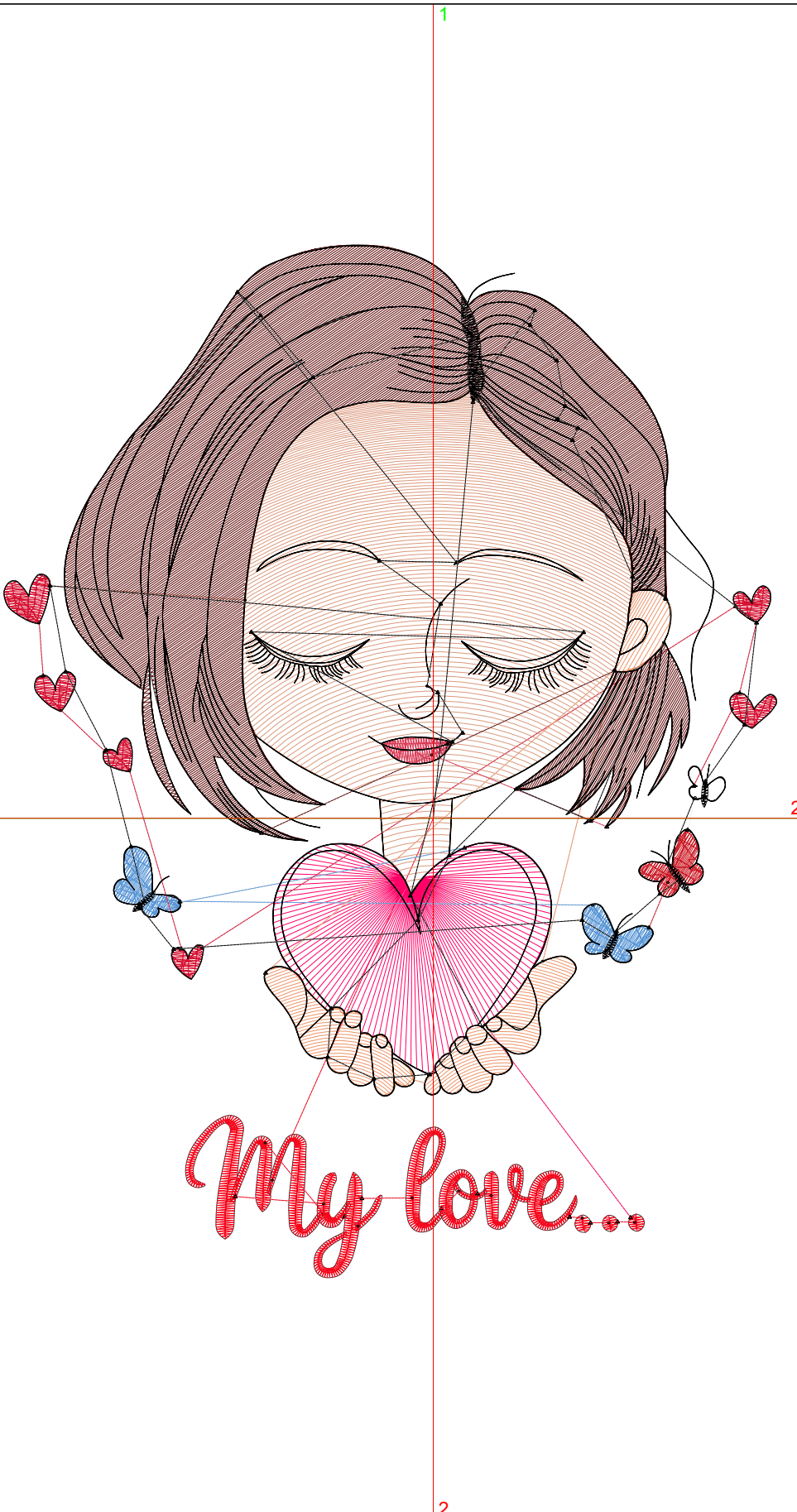
Title:

Stitches: 16,848  
 Height: 6.50 in  
 Width: 4.86 in  
 Colors: 11  
 Colorway: Colorway 1  
 Zoom: 1:1

Machine format: Tajima  
 Color changes: 10  
 Stops: 11  
 Trims: 73  
 Appliqués: 0  
 Left: 68.6 mm  
 Right: 54.9 mm  
 Up: 91.6 mm  
 Down: 73.4 mm  
 EndX: 0.00 in  
 EndY: 0.00 in  
 Area: 31.59 in<sup>2</sup>  
 Max stitch: 7.2 mm  
 Min stitch: 0.0 mm  
 Max jump: 7.0 mm  
 Total thread: 269.38ft  
 Total bobbin: 91.98ft

Stop Sequence:

| #   | N# | Color | St.   | Code | Name      | Chart   |
|-----|----|-------|-------|------|-----------|---------|
| 1.  | 4  |       | 1,787 | R245 | G8 B28    |         |
| 2.  | 2  |       | 771   | R255 | G1 B103   |         |
| 3.  | 5  |       | 452   | R91  | G151 B214 |         |
| 4.  | 11 |       | 200   | R204 | G29 B40   |         |
| 5.  | 9  |       | 99    | 9    | White     | Default |
| 6.  | 7  |       | 739   | R214 | G19 B51   |         |
| 7.  | 6  |       | 2,343 | R219 | G153 B125 |         |
| 8.  | 10 |       | 676   | R237 | G149 B105 |         |
| 9.  | 12 |       | 4,391 | R94  | G10 B8    |         |
| 10. | 8  |       | 167   | R219 | G61 B90   |         |
| 11. | 1  |       | 5,221 | R0   | G0 B0     |         |



# Production Worksheet

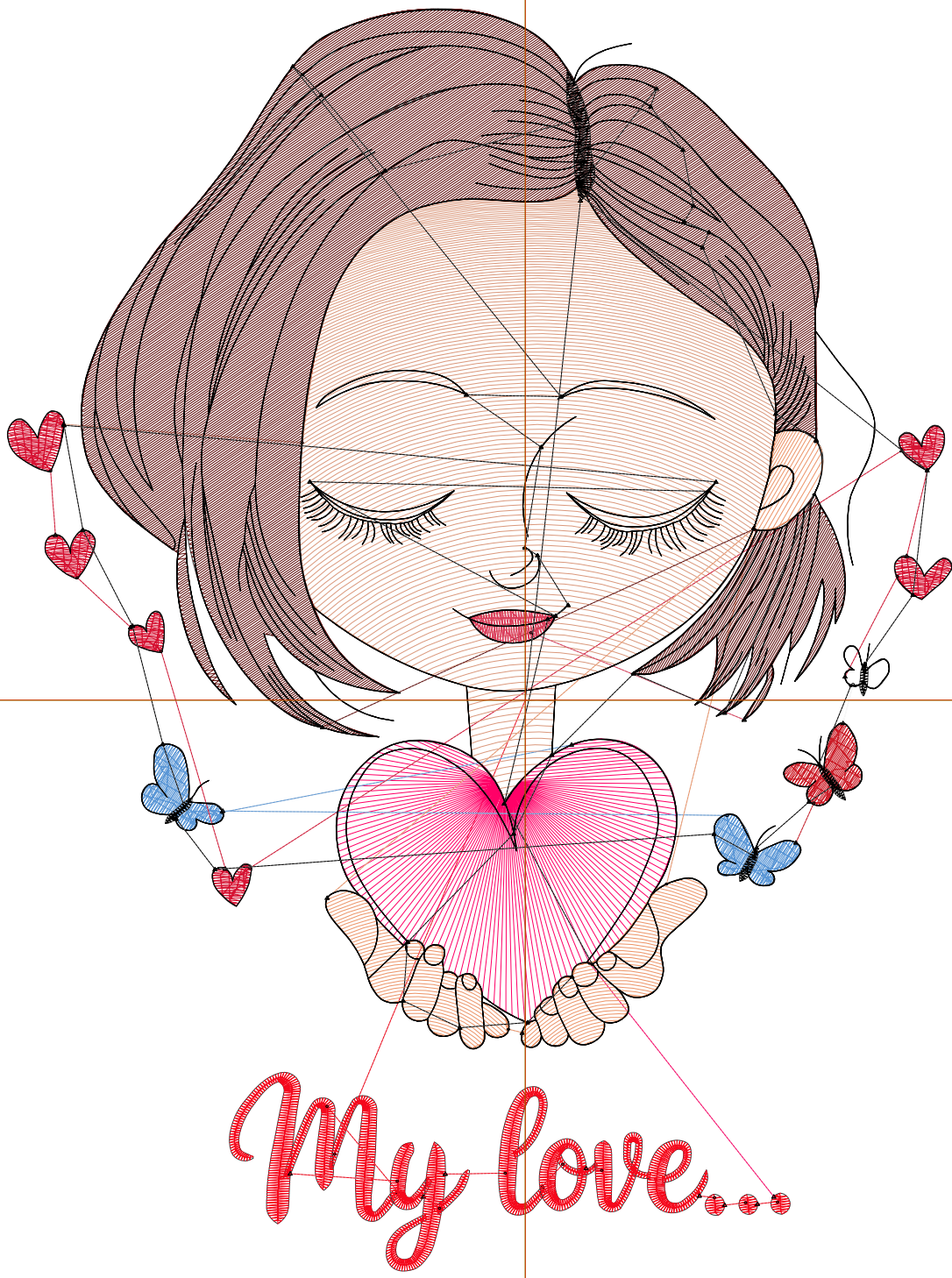
Wilcom EmbroideryStudio - Designing



Design: **7**

Title:

Stitches: 20,358  
Height: 7.50 in  
Width: 5.61 in  
Colors: 11  
Colorway: Colorway 1  
Zoom: 1:1



# Production Worksheet

Wilcom EmbroideryStudio - Designing



Design: **7**

Title:

Stitches: 20,358  
 Height: 7.50 in  
 Width: 5.61 in  
 Colors: 11  
 Colorway: Colorway 1  
 Zoom: 1:1

Machine format: Tajima  
 Color changes: 10  
 Stops: 11  
 Trims: 75  
 Appliqués: 0  
 Left: 78.1 mm  
 Right: 64.4 mm  
 Up: 104.3 mm  
 Down: 86.2 mm  
 EndX: 0.00 in  
 EndY: 0.00 in  
 Area 42.07 in<sup>2</sup>  
 Max stitch: 7.0 mm  
 Min stitch: 0.0 mm  
 Max jump: 7.0 mm  
 Total thread: 336.94ft  
 Total bobbin: 118.37ft

Stop Sequence:

| #   | N# | Color | St.   | Code | Name           | Chart   |
|-----|----|-------|-------|------|----------------|---------|
| 1.  | 4  |       | 2,059 |      | R245 G8 B28    |         |
| 2.  | 2  |       | 992   |      | R255 G1 B103   |         |
| 3.  | 5  |       | 526   |      | R91 G151 B214  |         |
| 4.  | 11 |       | 232   |      | R204 G29 B40   |         |
| 5.  | 9  |       | 123   | 9    | White          | Default |
| 6.  | 7  |       | 894   |      | R214 G19 B51   |         |
| 7.  | 6  |       | 3,070 |      | R219 G153 B125 |         |
| 8.  | 10 |       | 856   |      | R237 G149 B105 |         |
| 9.  | 12 |       | 5,660 |      | R94 G10 B8     |         |
| 10. | 8  |       | 201   |      | R219 G61 B90   |         |
| 11. | 1  |       | 5,743 |      | R0 G0 B0       |         |