

Production Worksheet

Wilcom EmbroideryStudio - Designing



Design: **2**

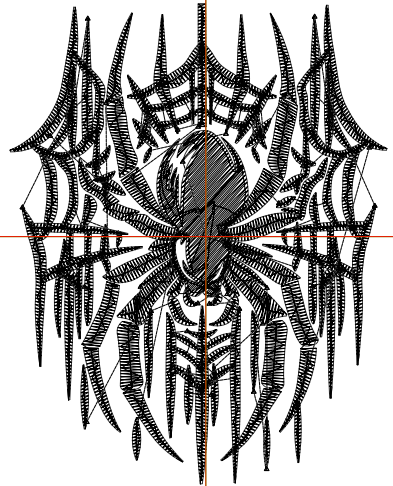
Title:

Stitches: 8,397
 Height: 2.50 in
 Width: 1.96 in
 Colors: 1
 Colorway: Colorway 1
 Zoom: 1:1

Machine format: Tajima
 Color changes: 0
 Stops: 1
 Trims: 52
 Appliqués: 0
 Left: 25.9 mm
 Right: 23.9 mm
 Up: 30.8 mm
 Down: 32.7 mm
 EndX: 0.00 in
 EndY: 0.00 in
 Area: 4.91 in²
 Max stitch: 10.9 mm
 Min stitch: 0.0 mm
 Max jump: 6.8 mm
 Total thread: 101.38ft
 Total bobbin: 27.23ft

Stop Sequence:

#	N#	Color	St.	Code	Name	Chart
1.	8	█	8,395	8	Black	Default



Production Worksheet

Wilcom EmbroideryStudio - Designing



Design: **3**

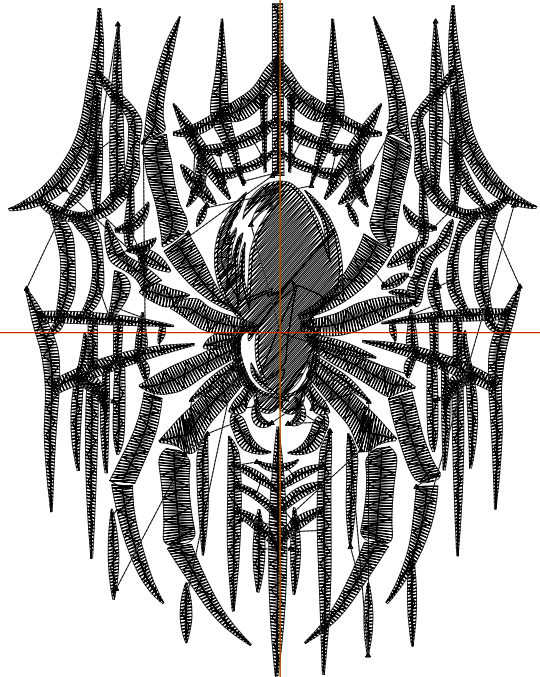
Title:

Stitches: 11,811
 Height: 3.50 in
 Width: 2.75 in
 Colors: 1
 Colorway: Colorway 1
 Zoom: 1:1

Machine format: Tajima
 Color changes: 0
 Stops: 1
 Trims: 71
 Appliqués: 0
 Left: 35.9 mm
 Right: 33.9 mm
 Up: 43.5 mm
 Down: 45.4 mm
 EndX: 0.00 in
 EndY: 0.00 in
 Area 9.62 in²
 Max stitch: 6.8 mm
 Min stitch: 0.0 mm
 Max jump: 6.8 mm
 Total thread: 161.36ft
 Total bobbin: 49.50ft

Stop Sequence:

#	N#	Color	St.	Code	Name	Chart
1.	8		11,809	8	Black	Default



Production Worksheet

Wilcom EmbroideryStudio - Designing



Design: **4**

Title:

Stitches: 15,367
 Height: 4.50 in
 Width: 3.53 in
 Colors: 1
 Colorway: Colorway 1
 Zoom: 1:1



Machine format: Tajima
 Color changes: 0
 Stops: 1
 Trims: 74
 Appliqués: 0
 Left: 45.9 mm
 Right: 43.9 mm
 Up: 56.2 mm
 Down: 58.1 mm
 EndX: 0.00 in
 EndY: 0.00 in
 Area: 15.90 in²
 Max stitch: 6.8 mm
 Min stitch: 0.0 mm
 Max jump: 6.8 mm
 Total thread: 234.85ft
 Total bobbin: 79.22ft

Stop Sequence:

#	N#	Color	St.	Code	Name	Chart
1.	8		15,365	8	Black	Default

Production Worksheet

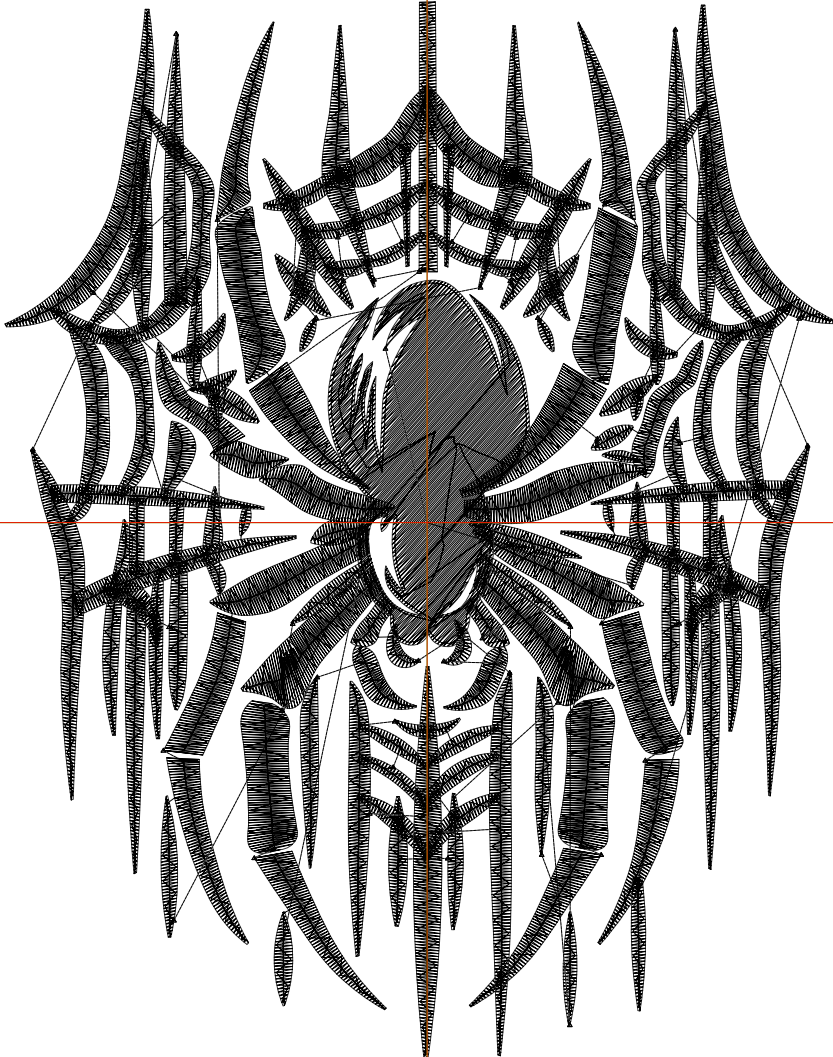
Wilcom EmbroideryStudio - Designing



Design: **5**

Title:

Stitches: 19,160
 Height: 5.50 in
 Width: 4.32 in
 Colors: 1
 Colorway: Colorway 1
 Zoom: 1:1



Machine format: Tajima
 Color changes: 0
 Stops: 1
 Trims: 75
 Appliqués: 0
 Left: 55.8 mm
 Right: 53.9 mm
 Up: 68.9 mm
 Down: 70.8 mm
 EndX: 0.00 in
 EndY: 0.00 in
 Area: 23.76 in²
 Max stitch: 8.2 mm
 Min stitch: 0.0 mm
 Max jump: 6.9 mm
 Total thread: 323.73ft
 Total bobbin: 117.14ft

Stop Sequence:

#	N#	Color	St.	Code	Name	Chart
1.	8	█	19,158	8	Black	Default

Production Worksheet

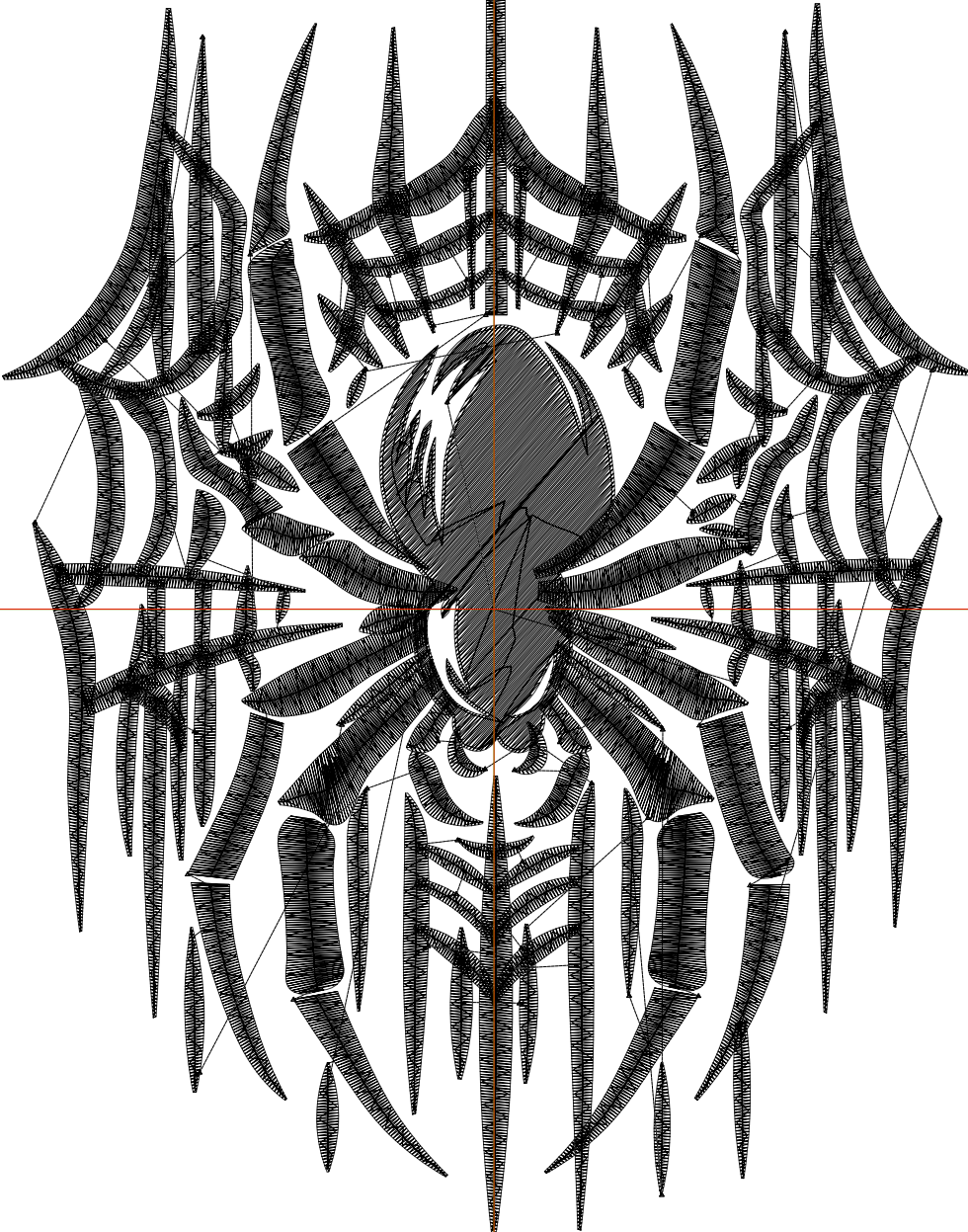
Wilcom EmbroideryStudio - Designing



Design: **6**

Title:

Stitches: 23,173
 Height: 6.50 in
 Width: 5.11 in
 Colors: 1
 Colorway: Colorway 1
 Zoom: 1:1



Machine format: Tajima
 Color changes: 0
 Stops: 1
 Trims: 78
 Appliqués: 0
 Left: 65.8 mm
 Right: 63.9 mm
 Up: 81.6 mm
 Down: 83.5 mm
 EndX: 0.00 in
 EndY: 0.00 in
 Area: 33.18 in²
 Max stitch: 9.7 mm
 Min stitch: 0.0 mm
 Max jump: 6.9 mm
 Total thread: 428.95ft
 Total bobbin: 163.89ft

Stop Sequence:

#	N#	Color	St.	Code	Name	Chart
1.	8		23,171	8	Black	Default

Production Worksheet

Wilcom EmbroideryStudio - Designing



Design: **7**

Title:

Stitches: 27,310
Height: 7.50 in
Width: 5.89 in
Colors: 1
Colorway: Colorway 1
Zoom: 1:1



Production Worksheet

Wilcom EmbroideryStudio - Designing



Design: **7**

Title:

Stitches: 27,310
Height: 7.50 in
Width: 5.89 in
Colors: 1
Colorway: Colorway 1
Zoom: 1:1

Machine format: Tajima
Color changes: 0
Stops: 1
Trims: 76
Appliqués: 0
Left: 75.8 mm
Right: 73.8 mm
Up: 94.3 mm
Down: 96.2 mm
EndX: 0.00 in
EndY: 0.00 in
Area 44.18 in²
Max stitch: 11.1 mm
Min stitch: 0.0 mm
Max jump: 7.0 mm
Total thread: 549.46ft
Total bobbin: 219.22ft

Stop Sequence:

#	N#	Color	St.	Code	Name	Chart
1.	8	█	27,308	8	Black	Default