

Production Worksheet

Wilcom EmbroideryStudio - Designing



Design: **3**

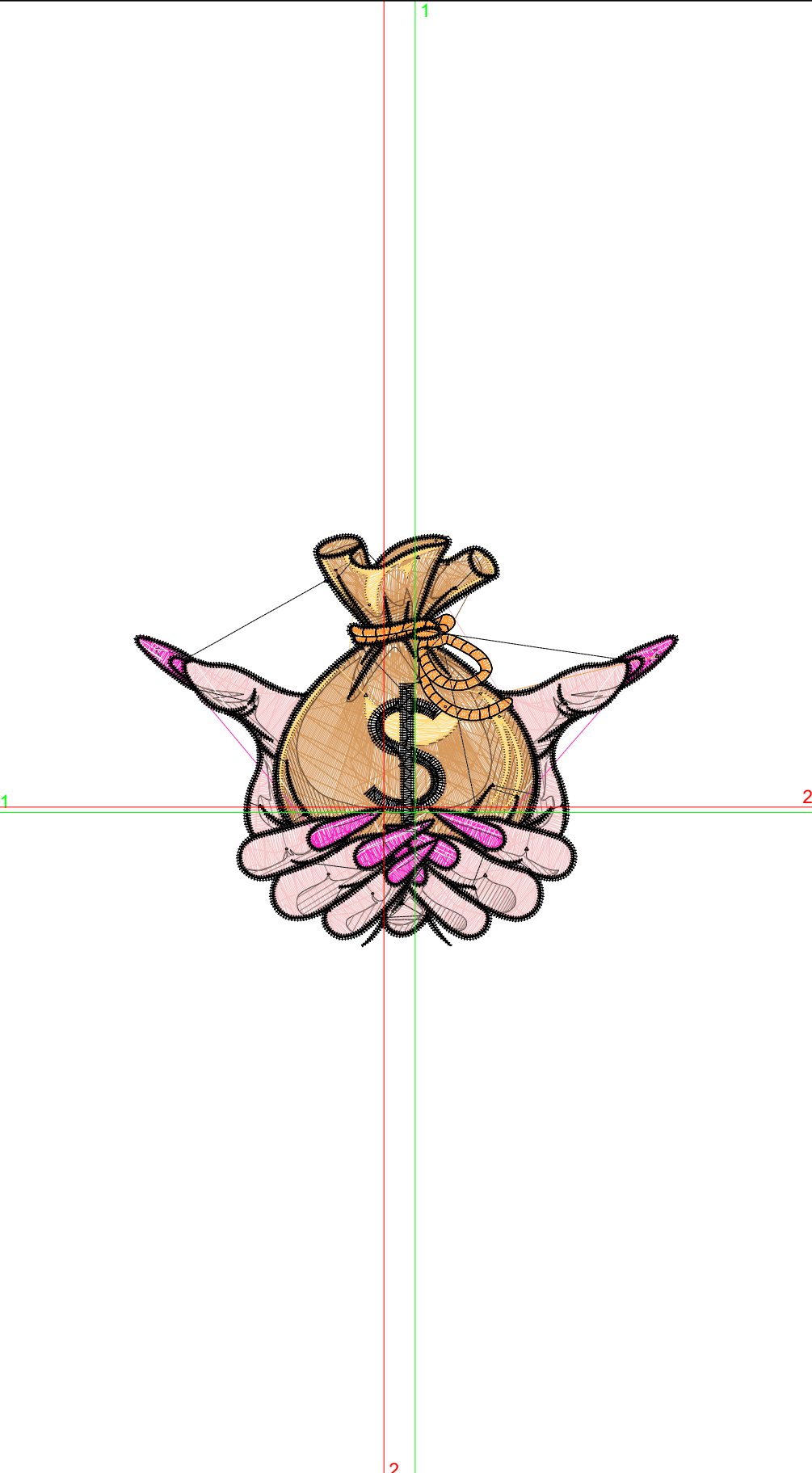
Title:

Stitches: 19,049
 Height: 2.67 in
 Width: 3.51 in
 Colors: 9
 Colorway: Colorway 1
 Zoom: 1:1

Machine format: Tajima
 Color changes: 8
 Stops: 9
 Trims: 88
 Appliqués: 0
 Left: 46.1 mm
 Right: 43.1 mm
 Up: 45.7 mm
 Down: 22.0 mm
 EndX: -0.20 in
 EndY: 0.04 in
 Area: 9.36 in²
 Max stitch: 10.1 mm
 Min stitch: 0.0 mm
 Max jump: 7.0 mm
 Total thread: 259.95ft
 Total bobbin: 78.23ft

Stop Sequence:

#	N#	Color	St.	Code	Name	Chart
1.	2		3,343		R214 G153 B93	
2.	3		714		R138 G91 B52	
3.	4		1,196		R255 G219 B127	
4.	6		3,262		R245 G197 B199	
5.	5		544		R145 G124 B120	
6.	7		1,242		R255 G34 B189	
7.	9		209	9	White	Default
8.	12		669	12	Orange	Default
9.	8		7,868	8	Black	Default



Production Worksheet

Wilcom EmbroideryStudio - Designing



Design: **4**

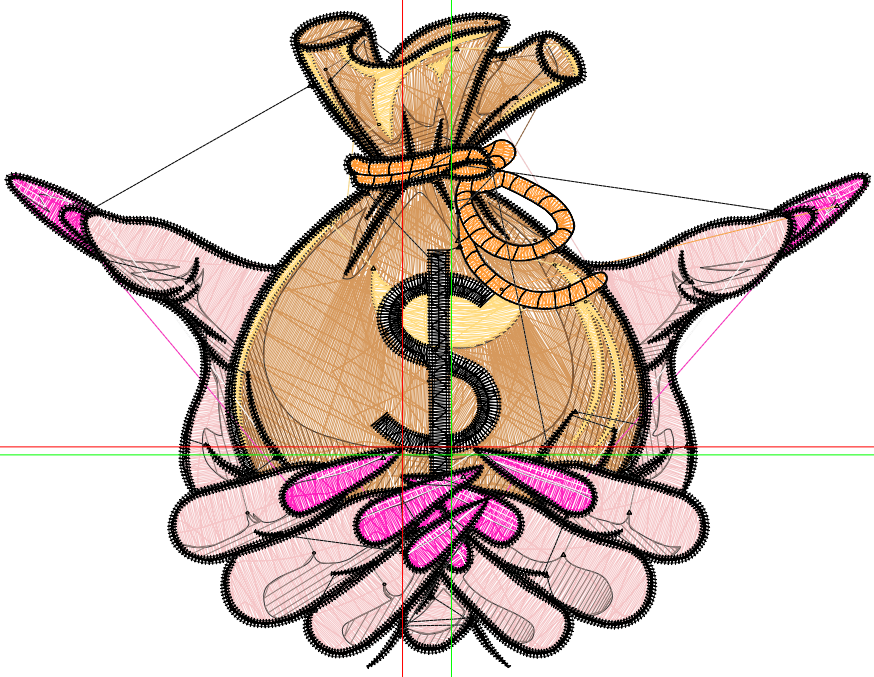
Title:

Stitches: 25,128
 Height: 3.42 in
 Width: 4.51 in
 Colors: 9
 Colorway: Colorway 1
 Zoom: 1:1

Machine format: Tajima
 Color changes: 8
 Stops: 9
 Trims: 97
 Appliqués: 0
 Left: 59.1 mm
 Right: 55.5 mm
 Up: 58.7 mm
 Down: 28.3 mm
 EndX: -0.25 in
 EndY: 0.04 in
 Area 15.44 in²
 Max stitch: 6.7 mm
 Min stitch: 0.0 mm
 Max jump: 6.7 mm
 Total thread: 367.21ft
 Total bobbin: 118.15ft

Stop Sequence:

#	N#	Color	St.	Code	Name	Chart
1.	2		4,667		R214 G153 B93	
2.	3		993		R138 G91 B52	
3.	4		1,517		R255 G219 B127	
4.	6		4,621		R245 G197 B199	
5.	5		753		R145 G124 B120	
6.	7		1,668		R255 G34 B189	
7.	9		268	9	White	Default
8.	12		837	12	Orange	Default
9.	8		9,802	8	Black	Default



Production Worksheet

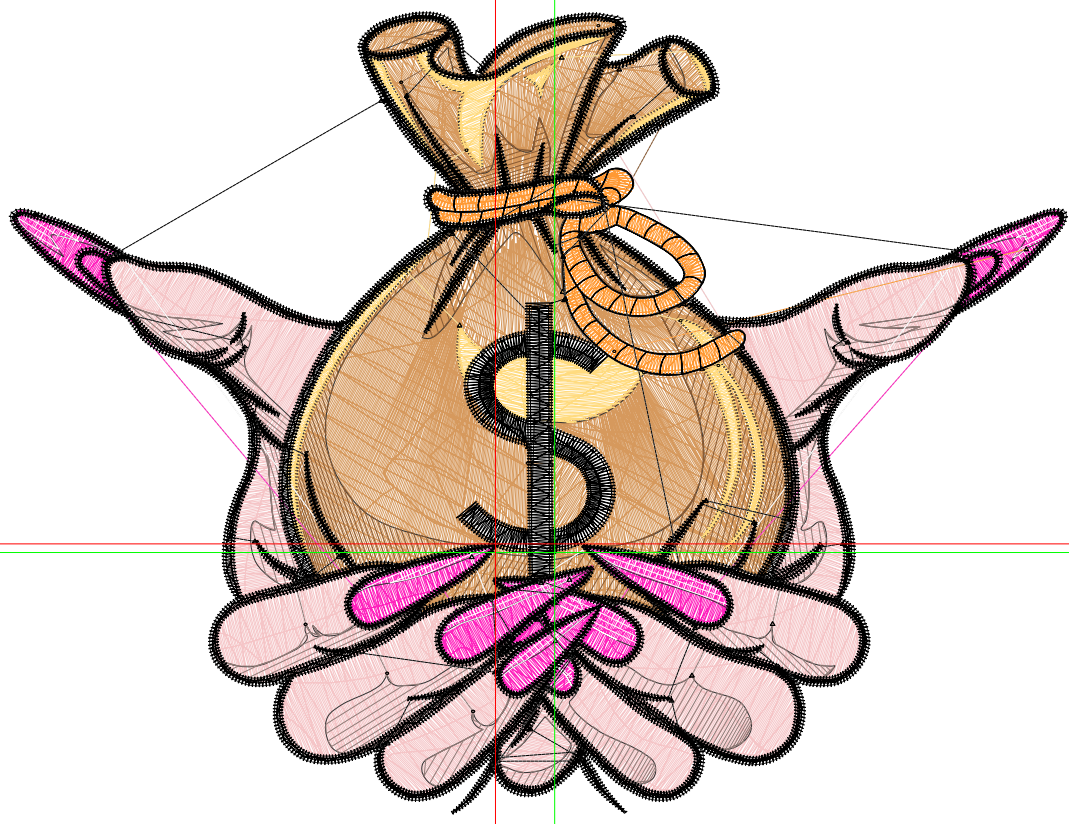
Wilcom EmbroideryStudio - Designing



Design: **5**

Title:

Stitches: 31,777
Height: 4.18 in
Width: 5.51 in
Colors: 9
Colorway: Colorway 1
Zoom: 1:1



Production Worksheet

Wilcom EmbroideryStudio - Designing



Design: **5**

Title:

Stitches: 31,777
 Height: 4.18 in
 Width: 5.51 in
 Colors: 9
 Colorway: Colorway 1
 Zoom: 1:1

Machine format: Tajima
 Color changes: 8
 Stops: 9
 Trims: 98
 Appliqués: 0
 Left: 72.1 mm
 Right: 67.9 mm
 Up: 71.6 mm
 Down: 34.6 mm
 EndX: -0.31 in
 EndY: 0.05 in
 Area 23.04 in²
 Max stitch: 11.1 mm
 Min stitch: 0.0 mm
 Max jump: 7.0 mm
 Total thread: 492.36ft
 Total bobbin: 166.46ft

Stop Sequence:

#	N#	Color	St.	Code	Name	Chart
1.	2		6,242		R214 G153 B93	
2.	3		1,302		R138 G91 B52	
3.	4		1,890		R255 G219 B127	
4.	6		6,151		R245 G197 B199	
5.	5		968		R145 G124 B120	
6.	7		2,066		R255 G34 B189	
7.	9		315	9	White	Default
8.	12		1,030	12	Orange	Default
9.	8		11,811	8	Black	Default

Production Worksheet

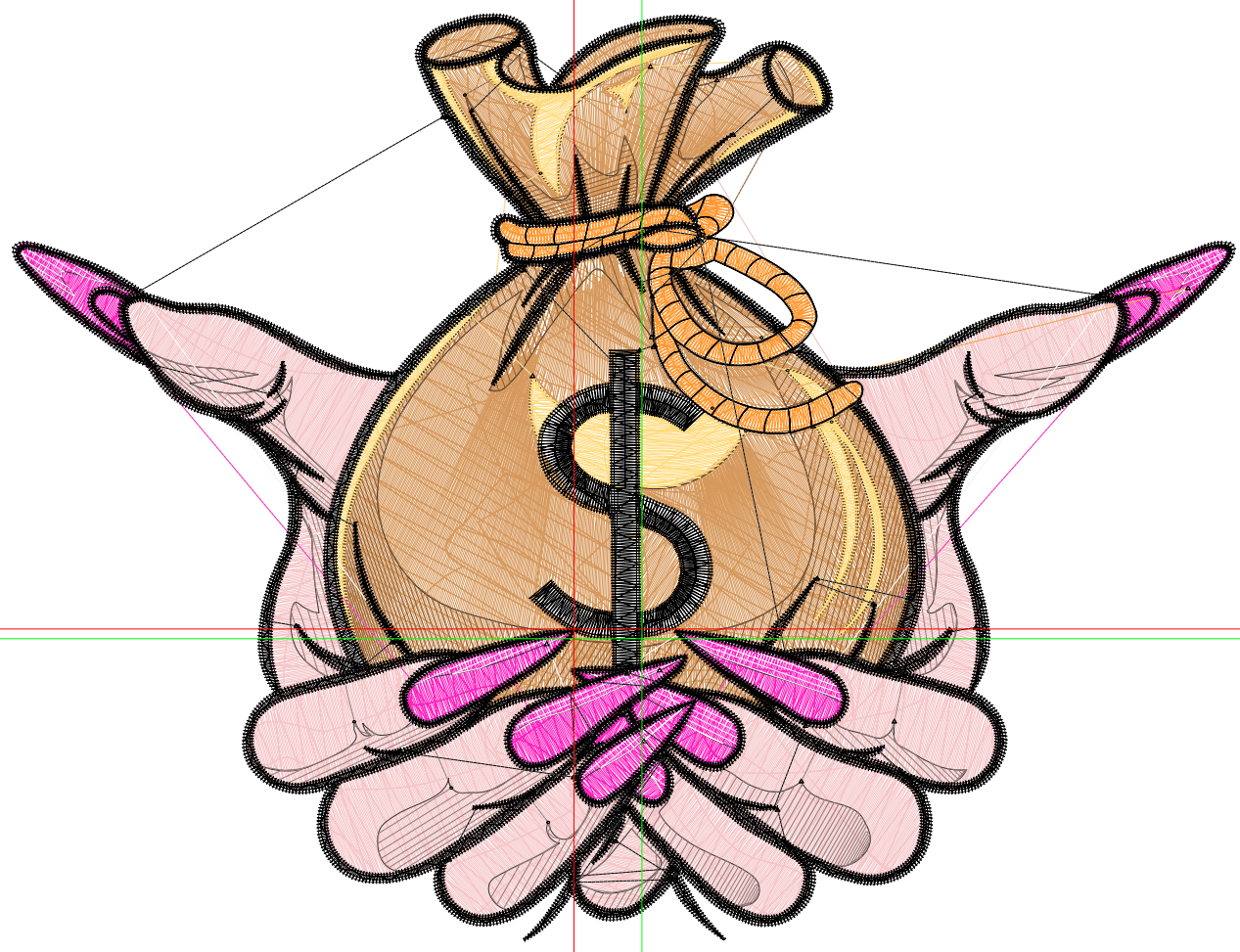
Wilcom EmbroideryStudio - Designing



Design: **6**

Title:

Stitches: 38,985
Height: 4.94 in
Width: 6.51 in
Colors: 9
Colorway: Colorway 1
Zoom: 1:1



Production Worksheet

Wilcom EmbroideryStudio - Designing



Design: **6**

Title:

Stitches: 38,985
 Height: 4.94 in
 Width: 6.51 in
 Colors: 9
 Colorway: Colorway 1
 Zoom: 1:1

Machine format: Tajima
 Color changes: 8
 Stops: 9
 Trims: 101
 Appliqués: 0
 Left: 85.1 mm
 Right: 80.3 mm
 Up: 84.5 mm
 Down: 40.9 mm
 EndX: -0.36 in
 EndY: 0.05 in
 Area 32.16 in²
 Max stitch: 9.8 mm
 Min stitch: 0.0 mm
 Max jump: 6.9 mm
 Total thread: 634.29ft
 Total bobbin: 222.54ft

Stop Sequence:

#	N#	Color	St.	Code	Name	Chart
1.	2		8,031		R214 G153 B93	
2.	3		1,607		R138 G91 B52	
3.	4		2,275		R255 G219 B127	
4.	6		7,930		R245 G197 B199	
5.	5		1,184		R145 G124 B120	
6.	7		2,566		R255 G34 B189	
7.	9		373	9	White	Default
8.	12		1,214	12	Orange	Default
9.	8		13,803	8	Black	Default

Production Worksheet

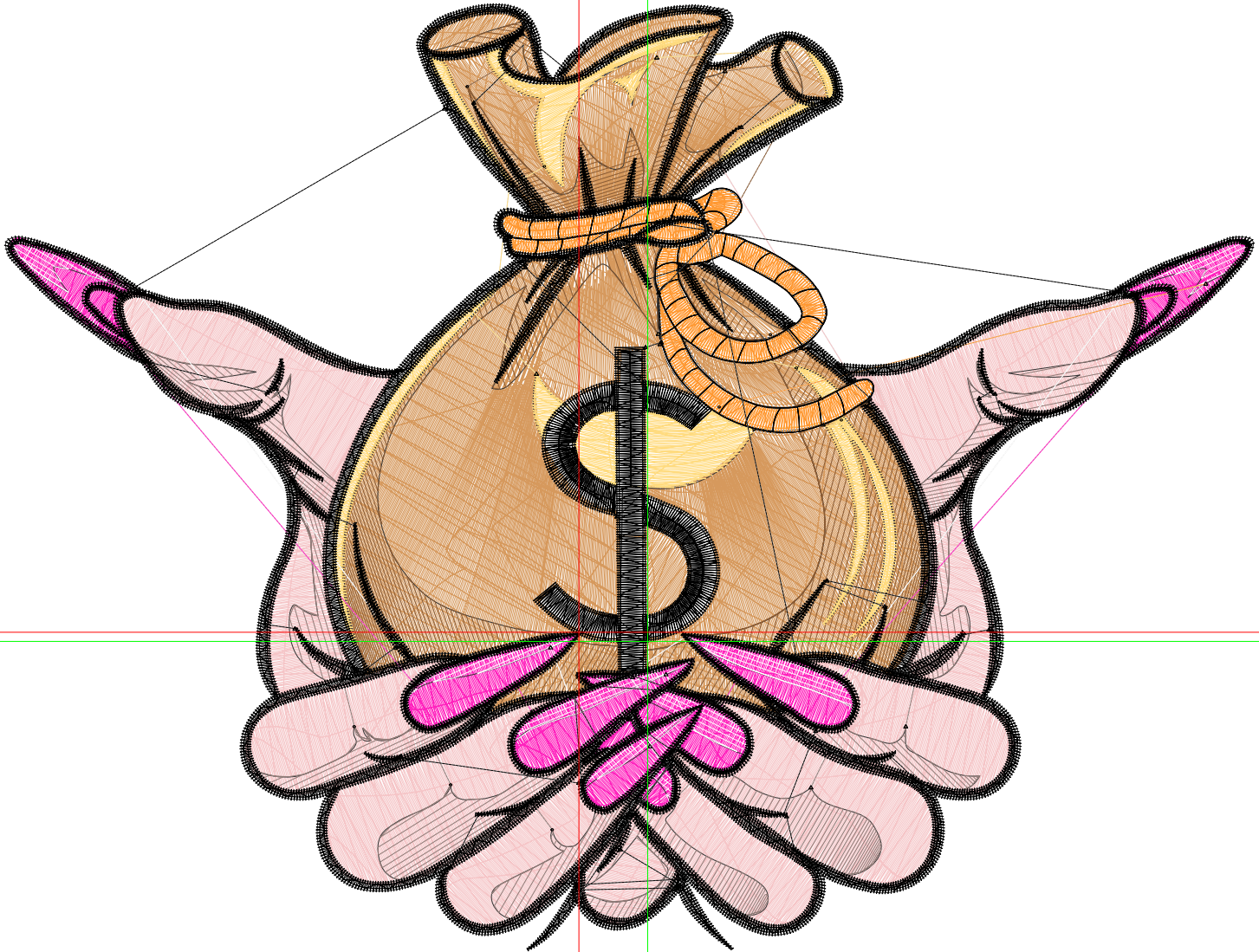
Wilcom EmbroideryStudio - Designing



Design: **7**

Title:

Stitches: 46,759
Height: 5.70 in
Width: 7.51 in
Colors: 9
Colorway: Colorway 1
Zoom: 1:1



Production Worksheet

Wilcom EmbroideryStudio - Designing



Design: **7**

Title:

Stitches: 46,759
 Height: 5.70 in
 Width: 7.51 in
 Colors: 9
 Colorway: Colorway 1
 Zoom: 1:1

Machine format: Tajima
 Color changes: 8
 Stops: 9
 Trims: 104
 Appliqués: 0
 Left: 98.2 mm
 Right: 92.6 mm
 Up: 97.4 mm
 Down: 47.3 mm
 EndX: -0.41 in
 EndY: 0.06 in
 Area 42.79 in²
 Max stitch: 11.3 mm
 Min stitch: 0.0 mm
 Max jump: 6.8 mm
 Total thread: 795.15ft
 Total bobbin: 287.63ft

Stop Sequence:

#	N#	Color	St.	Code	Name	Chart
1.	2		10,082		R214 G153 B93	
2.	3		1,942		R138 G91 B52	
3.	4		2,678		R255 G219 B127	
4.	6		9,872		R245 G197 B199	
5.	5		1,409		R145 G124 B120	
6.	7		3,091		R255 G34 B189	
7.	9		458	9	White	Default
8.	12		1,402	12	Orange	Default
9.	8		15,823	8	Black	Default