

# Production Worksheet

Wilcom EmbroideryStudio - Designing



Design: **3**

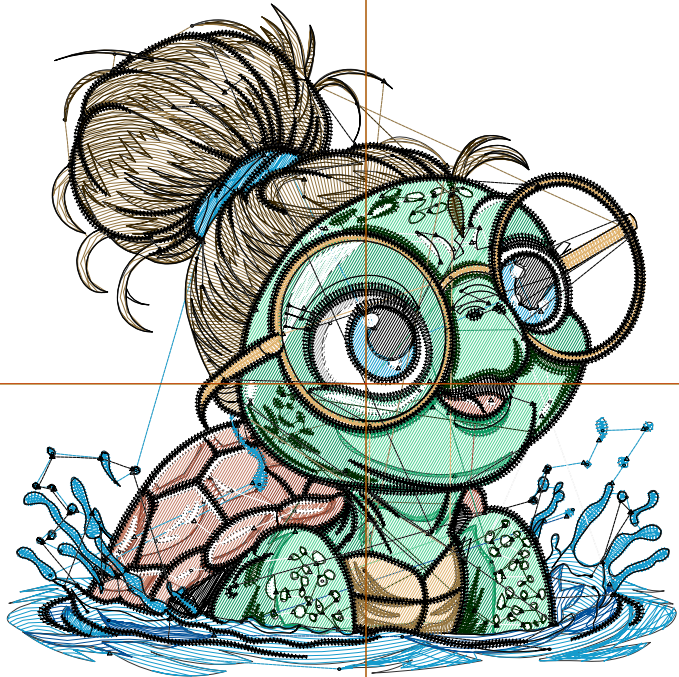
Title:

Stitches: 28,652  
 Height: 3.50 in  
 Width: 3.48 in  
 Colors: 13  
 Colorway: Colorway 1  
 Zoom: 1:1

Machine format: Tajima  
 Color changes: 12  
 Stops: 13  
 Trims: 196  
 Appliqués: 0  
 Left: 47.4 mm  
 Right: 41.0 mm  
 Up: 50.2 mm  
 Down: 38.7 mm  
 EndX: 0.00 in  
 EndY: 0.00 in  
 Area: 12.19 in<sup>2</sup>  
 Max stitch: 10.9 mm  
 Min stitch: 0.0 mm  
 Max jump: 7.0 mm  
 Total thread: 353.29ft  
 Total bobbin: 95.42ft

Stop Sequence:

#	N#	Color	St.	Code	Name	Chart
1.	17		1,592	R80	G209 B147	
2.	4		720	R196	G127 B104	
3.	11		786	R153	G69 B48	
4.	3		123	R153	G153 B153	
5.	1		1,818	R14	G153 B97	
6.	5		2,948	R21	G155 B204	
7.	10		368	R1	G80 B153	
8.	9		2,747	R255	G255 B255	
9.	7		1,934	R0	G43 B0	
10.	16		1,364	R224	G179 B111	
11.	2		2,200	R148	G118 B66	
12.	14		1,869	R56	G37 B0	
13.	8		10,181	R0	G0 B0	



# Production Worksheet

Wilcom EmbroideryStudio - Designing



Design: **4**

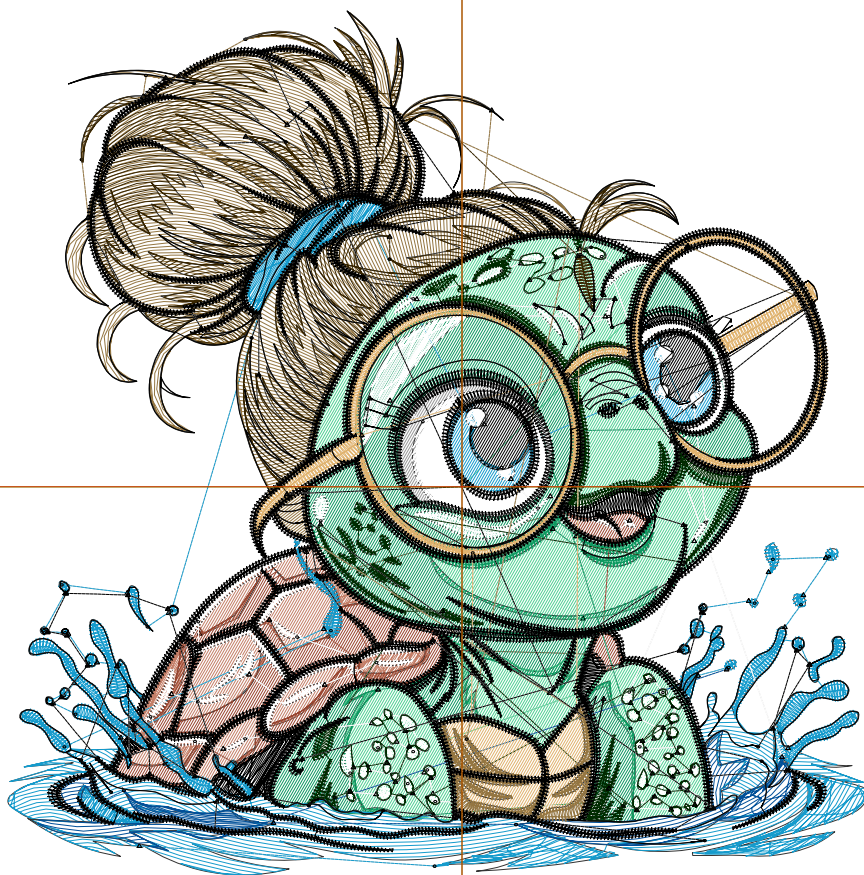
Title:

Stitches: 37,388  
 Height: 4.50 in  
 Width: 4.48 in  
 Colors: 13  
 Colorway: Colorway 1  
 Zoom: 1:1

Machine format: Tajima  
 Color changes: 12  
 Stops: 13  
 Trims: 224  
 Appliqués: 0  
 Left: 60.0 mm  
 Right: 53.7 mm  
 Up: 62.9 mm  
 Down: 51.4 mm  
 EndX: 0.00 in  
 EndY: 0.00 in  
 Area: 20.14 in<sup>2</sup>  
 Max stitch: 10.5 mm  
 Min stitch: 0.0 mm  
 Max jump: 7.0 mm  
 Total thread: 490.21ft  
 Total bobbin: 142.59ft

Stop Sequence:

#	N#	Color	St.	Code	Name	Chart
1.	17		2,310	R80	G209 B147	
2.	4		994	R196	G127 B104	
3.	11		1,096	R153	G69 B48	
4.	3		181	R153	G153 B153	
5.	1		2,519	R14	G153 B97	
6.	5		3,801	R21	G155 B204	
7.	10		468	R1	G80 B153	
8.	9		3,472	R255	G255 B255	
9.	7		2,393	R0	G43 B0	
10.	16		1,773	R224	G179 B111	
11.	2		3,168	R148	G118 B66	
12.	14		2,545	R56	G37 B0	
13.	8		12,666	R0	G0 B0	



# Production Worksheet

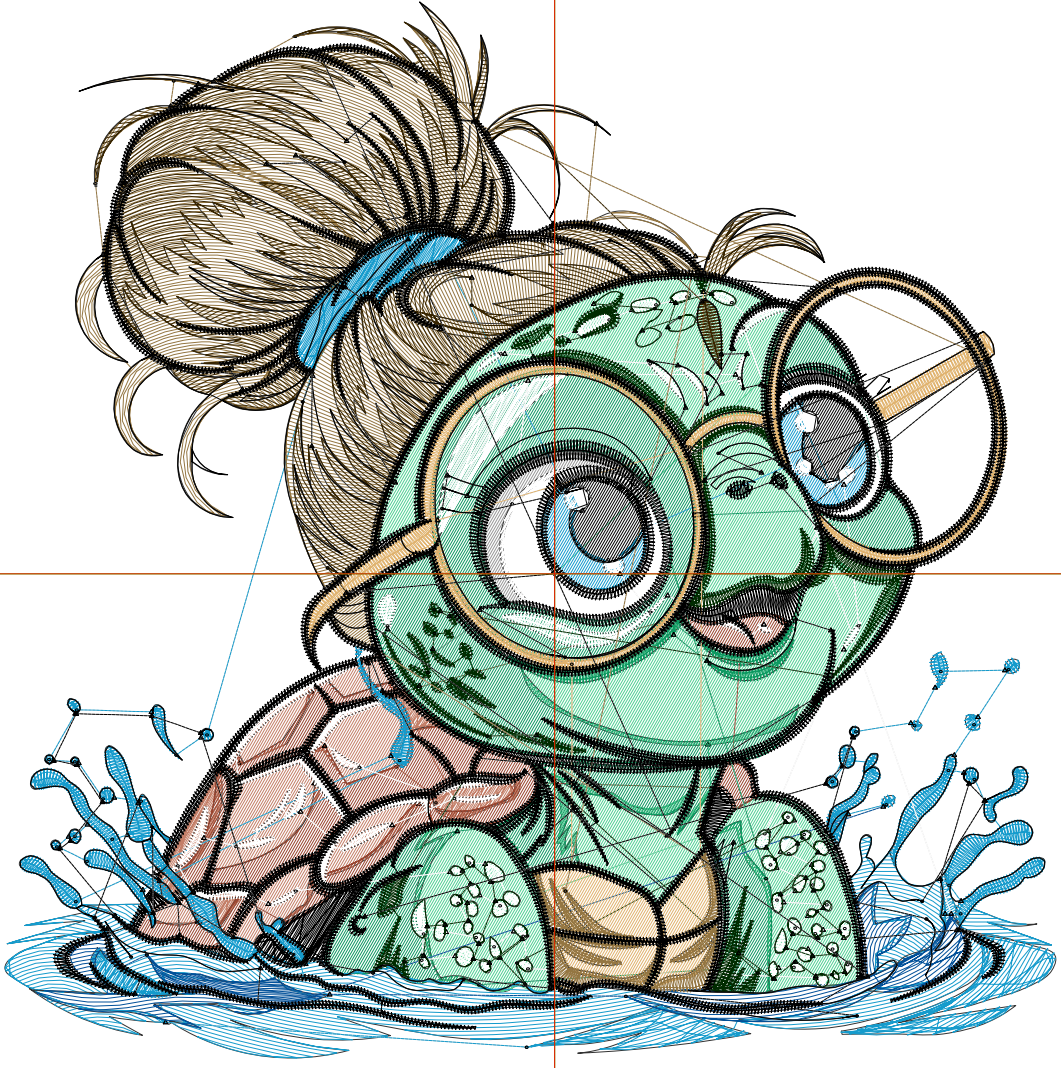
Wilcom EmbroideryStudio - Designing



Design: **5**

Title:

Stitches: 46,707  
Height: 5.50 in  
Width: 5.47 in  
Colors: 13  
Colorway: Colorway 1  
Zoom: 1:1



1

1

2

2

# Production Worksheet

Wilcom EmbroideryStudio - Designing



Design: **5**

Title:

Stitches: 46,707  
 Height: 5.50 in  
 Width: 5.47 in  
 Colors: 13  
 Colorway: Colorway 1  
 Zoom: 1:1

Machine format: Tajima  
 Color changes: 12  
 Stops: 13  
 Trims: 264  
 Appliqués: 0  
 Left: 72.7 mm  
 Right: 66.3 mm  
 Up: 75.6 mm  
 Down: 64.1 mm  
 EndX: 0.00 in  
 EndY: 0.00 in  
 Area 30.09 in<sup>2</sup>  
 Max stitch: 7.0 mm  
 Min stitch: 0.0 mm  
 Max jump: 7.0 mm  
 Total thread: 645.12ft  
 Total bobbin: 198.15ft

Stop Sequence:

#	N#	Color	St.	Code	Name	Chart
1.	17		3,152		R80 G209 B147	
2.	4		1,250		R196 G127 B104	
3.	11		1,389		R153 G69 B48	
4.	3		228		R153 G153 B153	
5.	1		3,310		R14 G153 B97	
6.	5		4,855		R21 G155 B204	
7.	10		609		R1 G80 B153	
8.	9		4,208		R255 G255 B255	
9.	7		2,859		R0 G43 B0	
10.	16		2,223		R224 G179 B111	
11.	2		4,209		R148 G118 B66	
12.	14		3,232		R56 G37 B0	
13.	8		15,181		R0 G0 B0	

# Production Worksheet

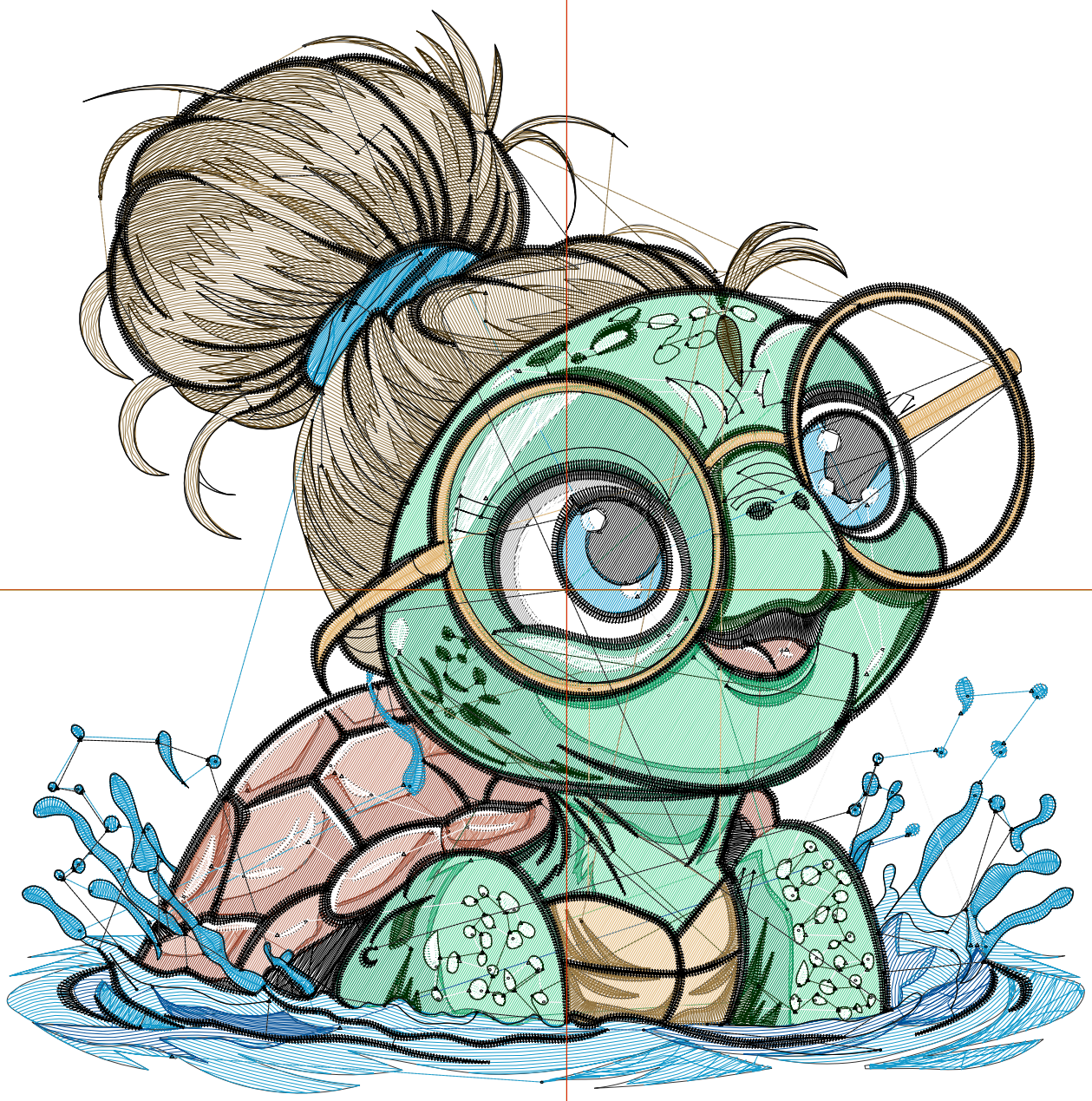
Wilcom EmbroideryStudio - Designing



Design: **6**

Title:

Stitches: 56,947  
Height: 6.50 in  
Width: 6.47 in  
Colors: 13  
Colorway: Colorway 1  
Zoom: 1:1



# Production Worksheet

Wilcom EmbroideryStudio - Designing



Design: **6**

Title:

Stitches: 56,947  
 Height: 6.50 in  
 Width: 6.47 in  
 Colors: 13  
 Colorway: Colorway 1  
 Zoom: 1:1

Machine format: Tajima  
 Color changes: 12  
 Stops: 13  
 Trims: 293  
 Appliqués: 0  
 Left: 85.3 mm  
 Right: 79.0 mm  
 Up: 88.3 mm  
 Down: 76.7 mm  
 EndX: 0.00 in  
 EndY: 0.00 in  
 Area 42.04 in<sup>2</sup>  
 Max stitch: 7.0 mm  
 Min stitch: 0.0 mm  
 Max jump: 7.0 mm  
 Total thread: 823.81ft  
 Total bobbin: 264.23ft

Stop Sequence:

#	N#	Color	St.	Code	Name	Chart
1.	17		4,134		R80 G209 B147	
2.	4		1,606		R196 G127 B104	
3.	11		1,730		R153 G69 B48	
4.	3		276		R153 G153 B153	
5.	1		4,180		R14 G153 B97	
6.	5		5,825		R21 G155 B204	
7.	10		800		R1 G80 B153	
8.	9		4,945		R255 G255 B255	
9.	7		3,280		R0 G43 B0	
10.	16		2,687		R224 G179 B111	
11.	2		5,479		R148 G118 B66	
12.	14		4,246		R56 G37 B0	
13.	8		17,757		R0 G0 B0	

# Production Worksheet

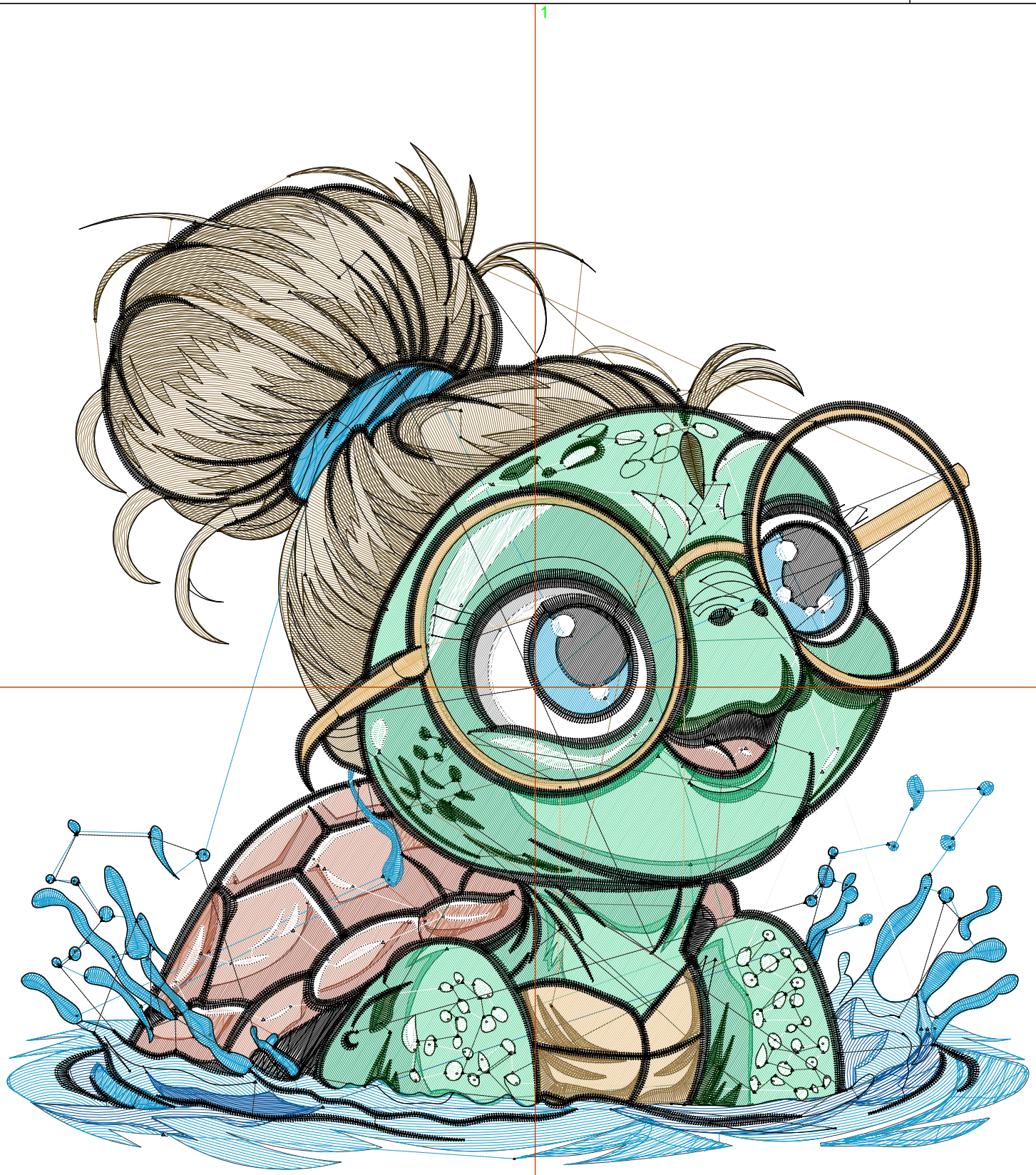
Wilcom EmbroideryStudio - Designing



Design: **7**

Title:

Stitches: 67,573  
Height: 7.50 in  
Width: 7.46 in  
Colors: 13  
Colorway: Colorway 1  
Zoom: 1:1



# Production Worksheet

Wilcom EmbroideryStudio - Designing



Design: **7**

Title:

Stitches: 67,573  
 Height: 7.50 in  
 Width: 7.46 in  
 Colors: 13  
 Colorway: Colorway 1  
 Zoom: 1:1

Machine format: Tajima  
 Color changes: 12  
 Stops: 13  
 Trims: 313  
 Appliqués: 0  
 Left: 98.0 mm  
 Right: 91.6 mm  
 Up: 101.0 mm  
 Down: 89.4 mm  
 EndX: 0.00 in  
 EndY: 0.00 in  
 Area 55.96 in<sup>2</sup>  
 Max stitch: 7.0 mm  
 Min stitch: 0.0 mm  
 Max jump: 7.0 mm  
 Total thread: 1019.18ft  
 Total bobbin: 338.68ft

Stop Sequence:

#	N#	Color	St.	Code	Name	Chart
1.	17		5,184		R80 G209 B147	
2.	4		1,964		R196 G127 B104	
3.	11		2,086		R153 G69 B48	
4.	3		337		R153 G153 B153	
5.	1		5,192		R14 G153 B97	
6.	5		7,001		R21 G155 B204	
7.	10		961		R1 G80 B153	
8.	9		5,702		R255 G255 B255	
9.	7		3,712		R0 G43 B0	
10.	16		3,173		R224 G179 B111	
11.	2		6,783		R148 G118 B66	
12.	14		5,159		R56 G37 B0	
13.	8		20,317		R0 G0 B0	