

# Production Worksheet

Wilcom EmbroideryStudio - Designing



Design: **3 inch**

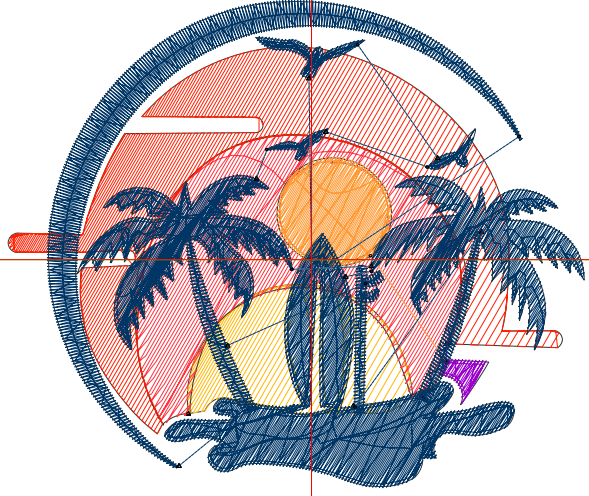
Title:

Stitches: 8,014  
 Height: 2.54 in  
 Width: 3.00 in  
 Colors: 6  
 Colorway: Colorway 1  
 Zoom: 1:1

Machine format: Tajima  
 Color changes: 5  
 Stops: 6  
 Trims: 15  
 Appliqués: 0  
 Left: 40.1 mm  
 Right: 36.2 mm  
 Up: 34.3 mm  
 Down: 30.2 mm  
 EndX: 0.00 in  
 EndY: 0.00 in  
 Area: 7.62 in<sup>2</sup>  
 Max stitch: 11.0 mm  
 Min stitch: 0.1 mm  
 Max jump: 6.9 mm  
 Total thread: 131.52ft  
 Total bobbin: 45.61ft

Stop Sequence:

#	N#	Color	St.	Code	Name	Chart
1.	2		305		R255 G183 B1	
2.	3		744		R255 G50 B63	
3.	1		1,048		R255 G31 B1	
4.	13		78	13	Purple	Default
5.	12		381	12	Orange	Default
6.	4		5,456		R0 G54 B102	



# Production Worksheet

Wilcom EmbroideryStudio - Designing



Design: **4 inch**

Title:

Stitches: 11,705  
 Height: 3.38 in  
 Width: 4.00 in  
 Colors: 6  
 Colorway: Colorway 1  
 Zoom: 1:1

Machine format: Tajima  
 Color changes: 5  
 Stops: 6  
 Trims: 15  
 Appliqués: 0  
 Left: 52.8 mm  
 Right: 48.9 mm  
 Up: 45.0 mm  
 Down: 40.9 mm  
 EndX: 0.00 in  
 EndY: 0.00 in  
 Area 13.53 in<sup>2</sup>  
 Max stitch: 6.8 mm  
 Min stitch: 0.0 mm  
 Max jump: 6.8 mm  
 Total thread: 208.92ft  
 Total bobbin: 77.12ft

Stop Sequence:

#	N#	Color	St.	Code	Name	Chart
1.	2		474		R255 G183 B1	
2.	3		1,204		R255 G50 B63	
3.	1		1,622		R255 G31 B1	
4.	13		112	13	Purple	Default
5.	12		597	12	Orange	Default
6.	4		7,694		R0 G54 B102	



# Production Worksheet

Wilcom EmbroideryStudio - Designing



Design: **5 inch**

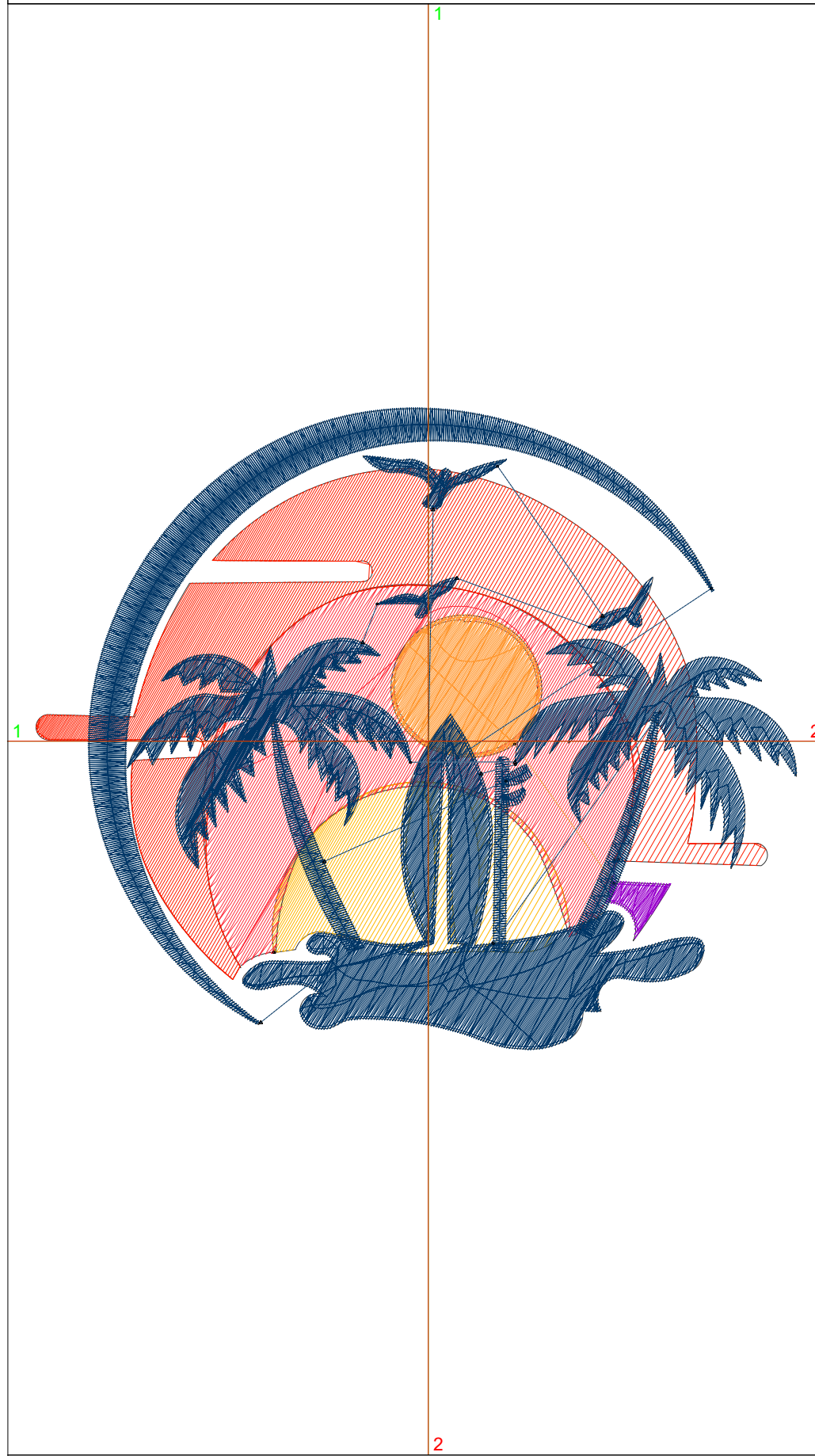
Title:

Stitches: 16,066  
 Height: 4.22 in  
 Width: 5.00 in  
 Colors: 6  
 Colorway: Colorway 1  
 Zoom: 1:1

Machine format: Tajima  
 Color changes: 5  
 Stops: 6  
 Trims: 15  
 Appliqués: 0  
 Left: 65.5 mm  
 Right: 61.6 mm  
 Up: 55.7 mm  
 Down: 51.6 mm  
 EndX: 0.00 in  
 EndY: 0.00 in  
 Area: 21.13 in<sup>2</sup>  
 Max stitch: 6.8 mm  
 Min stitch: 0.1 mm  
 Max jump: 6.5 mm  
 Total thread: 305.27ft  
 Total bobbin: 117.26ft

Stop Sequence:

#	N#	Color	St.	Code	Name	Chart
1.	2		664		R255 G183 B1	
2.	3		1,783		R255 G50 B63	
3.	1		2,290		R255 G31 B1	
4.	13		142	13	Purple	Default
5.	12		878	12	Orange	Default
6.	4		10,307		R0 G54 B102	



# Production Worksheet

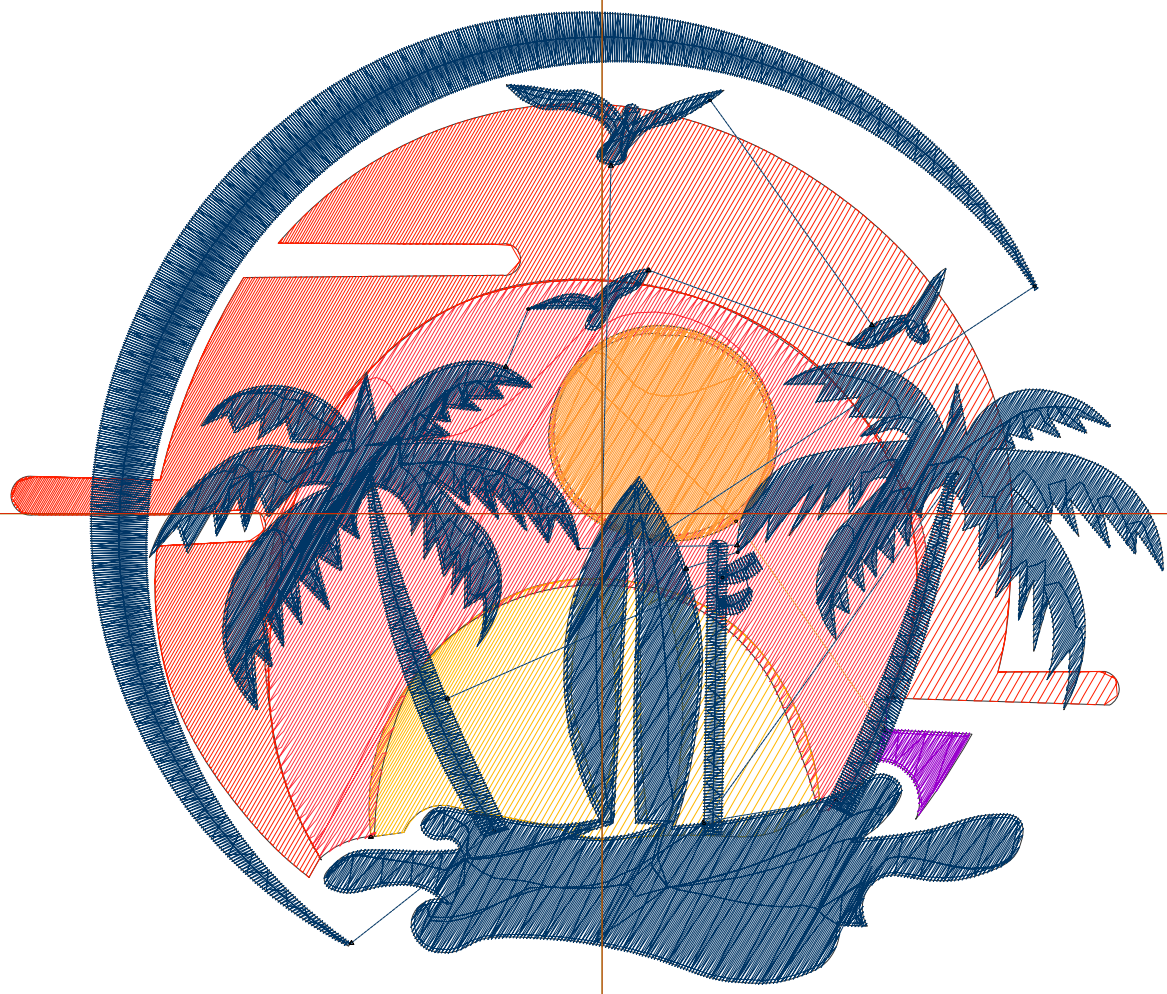
Wilcom EmbroideryStudio - Designing



Design: **6 inch**

Title:

Stitches: 21,006  
Height: 5.07 in  
Width: 6.00 in  
Colors: 6  
Colorway: Colorway 1  
Zoom: 1:1



# Production Worksheet

Wilcom EmbroideryStudio - Designing



Design: **6 inch**

Title:

Stitches: 21,006  
 Height: 5.07 in  
 Width: 6.00 in  
 Colors: 6  
 Colorway: Colorway 1  
 Zoom: 1:1

Machine format: Tajima  
 Color changes: 5  
 Stops: 6  
 Trims: 15  
 Appliqués: 0  
 Left: 78.2 mm  
 Right: 74.3 mm  
 Up: 66.4 mm  
 Down: 62.3 mm  
 EndX: 0.00 in  
 EndY: 0.00 in  
 Area 30.40 in<sup>2</sup>  
 Max stitch: 12.1 mm  
 Min stitch: 0.2 mm  
 Max jump: 6.9 mm  
 Total thread: 419.41ft  
 Total bobbin: 165.70ft

Stop Sequence:

#	N#	Color	St.	Code	Name	Chart
1.	2		920		R255 G183 B1	
2.	3		2,465		R255 G50 B63	
3.	1		3,098		R255 G31 B1	
4.	13		181	13	Purple	Default
5.	12		1,203	12	Orange	Default
6.	4		13,137		R0 G54 B102	

# Production Worksheet

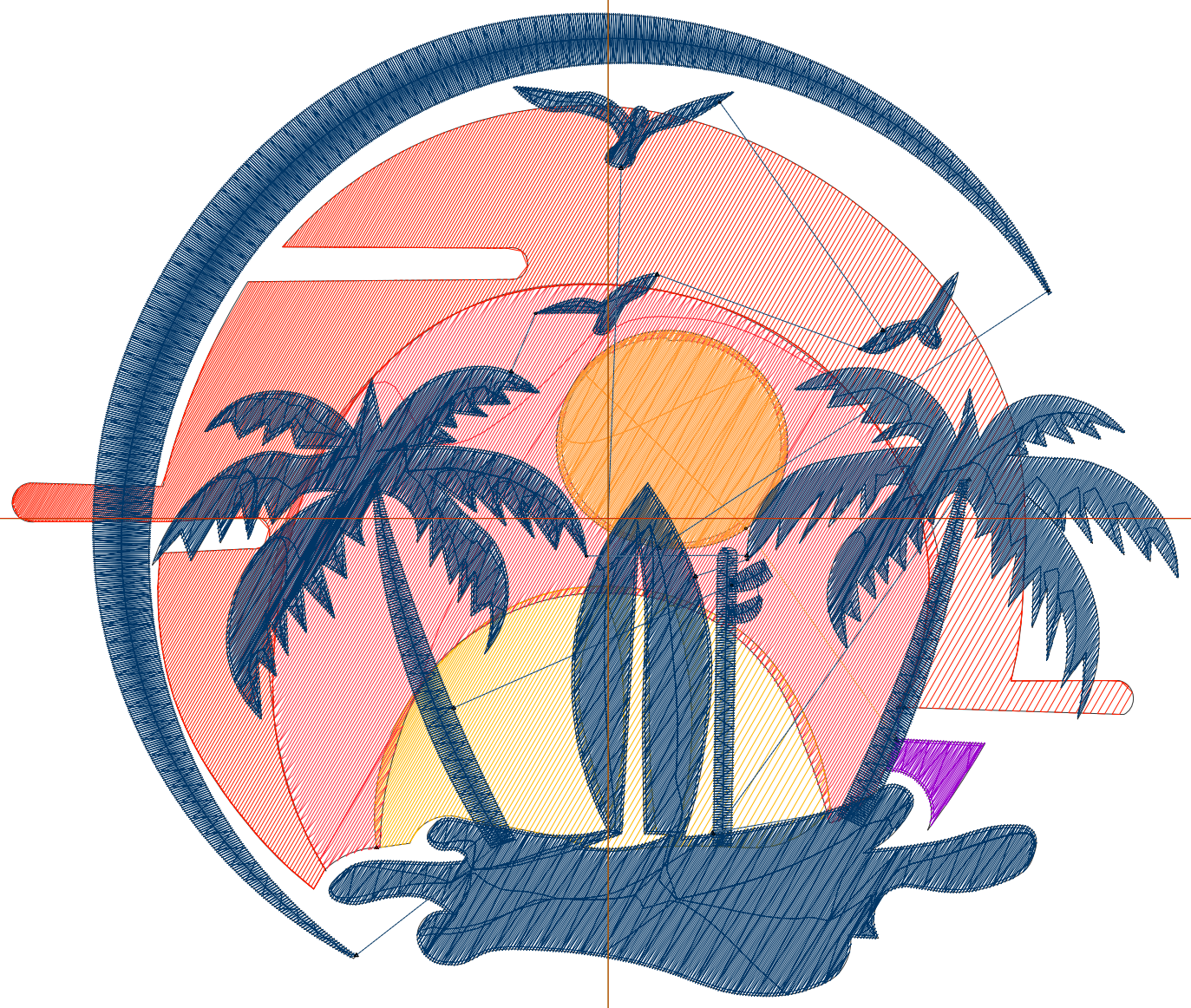
Wilcom EmbroideryStudio - Designing



Design: **7 inch**

Title:

Stitches: 26,473  
Height: 5.91 in  
Width: 7.00 in  
Colors: 6  
Colorway: Colorway 1  
Zoom: 1:1



# Production Worksheet

Wilcom EmbroideryStudio - Designing



Design: **7 inch**

Title:

Stitches: 26,473  
 Height: 5.91 in  
 Width: 7.00 in  
 Colors: 6  
 Colorway: Colorway 1  
 Zoom: 1:1

Machine format: Tajima  
 Color changes: 5  
 Stops: 6  
 Trims: 15  
 Appliqués: 0  
 Left: 90.9 mm  
 Right: 87.0 mm  
 Up: 77.1 mm  
 Down: 73.0 mm  
 EndX: 0.00 in  
 EndY: 0.00 in  
 Area 41.37 in<sup>2</sup>  
 Max stitch: 9.4 mm  
 Min stitch: 0.0 mm  
 Max jump: 7.0 mm  
 Total thread: 549.89ft  
 Total bobbin: 221.75ft

Stop Sequence:

#	N#	Color	St.	Code	Name	Chart
1.	2		1,165		R255 G183 B1	
2.	3		3,273		R255 G50 B63	
3.	1		3,989		R255 G31 B1	
4.	13		232	13	Purple	Default
5.	12		1,574	12	Orange	Default
6.	4		16,238		R0 G54 B102	