

# Production Worksheet

Wilcom EmbroideryStudio - Designing



Design: **3**

Title:

Stitches: 6,356  
 Height: 3.50 in  
 Width: 3.09 in  
 Colors: 14  
 Colorway: Colorway 1  
 Zoom: 1:1

Machine format: Tajima  
 Color changes: 13  
 Stops: 14  
 Trims: 31  
 Appliqués: 0  
 Left: 41.6 mm  
 Right: 37.0 mm  
 Up: 46.0 mm  
 Down: 42.9 mm  
 EndX: 0.00 in  
 EndY: 0.00 in  
 Area: 10.82 in<sup>2</sup>  
 Max stitch: 11.5 mm  
 Min stitch: 0.0 mm  
 Max jump: 6.7 mm  
 Total thread: 109.62ft  
 Total bobbin: 37.53ft

Stop Sequence:

#	N#	Color	St.	Code	Name	Chart
1.	2		425		R179 G184 B31	
2.	4		279		R79 G157 B191	
3.	5		431		R151 G207 B212	
4.	7		539		R14 G139 B153	
5.	6		405		R247 G95 B192	
6.	8		554		R235 G55 B118	
7.	9		364		R7 G153 B119	
8.	10		507		R47 G161 B55	
9.	11		514		R179 G104 B139	
10.	13		444		R255 G201 B211	
11.	12		439		R30 G45 B153	
12.	15		558		R227 G46 B36	
13.	3		533		R199 G224 B167	
14.	14		362		R255 G164 B60	



# Production Worksheet

Wilcom EmbroideryStudio - Designing



Design: **4**

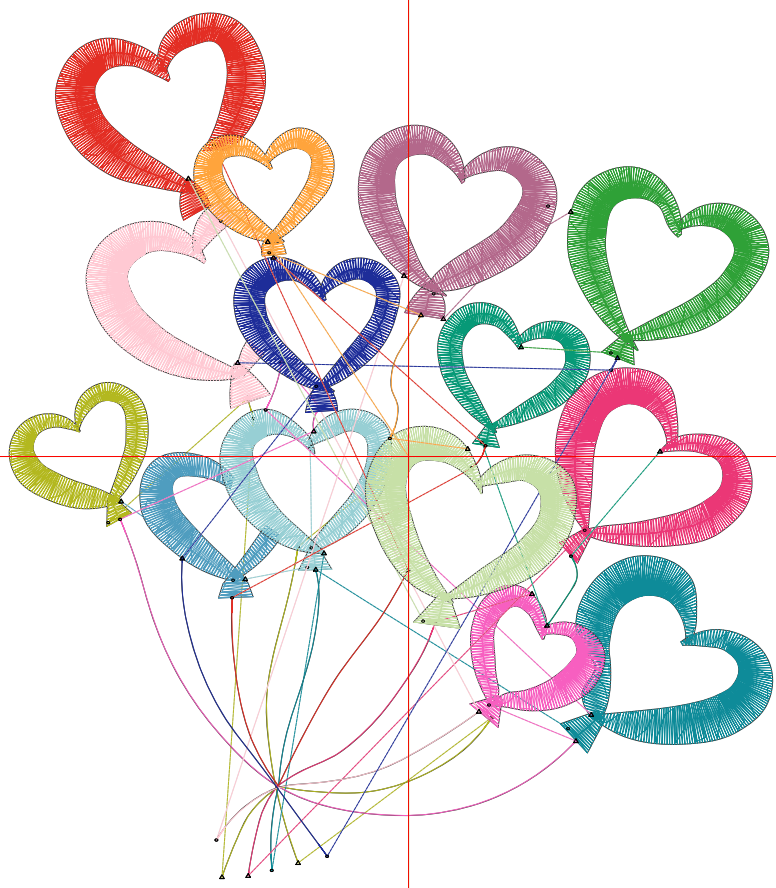
Title:

Stitches: 8,300  
 Height: 4.50 in  
 Width: 3.97 in  
 Colors: 14  
 Colorway: Colorway 1  
 Zoom: 1:1

Machine format: Tajima  
 Color changes: 13  
 Stops: 14  
 Trims: 31  
 Appliqués: 0  
 Left: 52.8 mm  
 Right: 48.2 mm  
 Up: 58.7 mm  
 Down: 55.6 mm  
 EndX: 0.00 in  
 EndY: 0.00 in  
 Area: 17.89 in<sup>2</sup>  
 Max stitch: 11.9 mm  
 Min stitch: 0.0 mm  
 Max jump: 7.0 mm  
 Total thread: 164.68ft  
 Total bobbin: 62.59ft

Stop Sequence:

#	N#	Color	St.	Code	Name	Chart
1.	2		537	R179 G184 B31		
2.	4		350	R79 G157 B191		
3.	5		559	R151 G207 B212		
4.	7		713	R14 G139 B153		
5.	6		520	R247 G95 B192		
6.	8		725	R235 G55 B118		
7.	9		478	R7 G153 B119		
8.	10		668	R47 G161 B55		
9.	11		664	R179 G104 B139		
10.	13		572	R255 G201 B211		
11.	12		600	R30 G45 B153		
12.	15		723	R227 G46 B36		
13.	3		715	R199 G224 B167		
14.	14		474	R255 G164 B60		



# Production Worksheet

Wilcom EmbroideryStudio - Designing



Design: **5**

Title:

Stitches: 10,414  
 Height: 5.50 in  
 Width: 4.86 in  
 Colors: 14  
 Colorway: Colorway 1  
 Zoom: 1:1

Machine format: Tajima  
 Color changes: 13  
 Stops: 14  
 Trims: 32  
 Appliqués: 0  
 Left: 64.0 mm  
 Right: 59.4 mm  
 Up: 71.4 mm  
 Down: 68.3 mm  
 EndX: 0.00 in  
 EndY: 0.00 in  
 Area: 26.72 in<sup>2</sup>  
 Max stitch: 9.8 mm  
 Min stitch: 0.1 mm  
 Max jump: 7.0 mm  
 Total thread: 233.22ft  
 Total bobbin: 94.99ft

Stop Sequence:

#	N#	Color	St.	Code	Name	Chart
1.	2		649	R179 G184 B31		
2.	4		448	R79 G157 B191		
3.	5		699	R151 G207 B212		
4.	7		906	R14 G139 B153		
5.	6		645	R247 G95 B192		
6.	8		910	R235 G55 B118		
7.	9		587	R7 G153 B119		
8.	10		848	R47 G161 B55		
9.	11		843	R179 G104 B139		
10.	13		732	R255 G201 B211		
11.	12		746	R30 G45 B153		
12.	15		915	R227 G46 B36		
13.	3		901	R199 G224 B167		
14.	14		583	R255 G164 B60		



# Production Worksheet

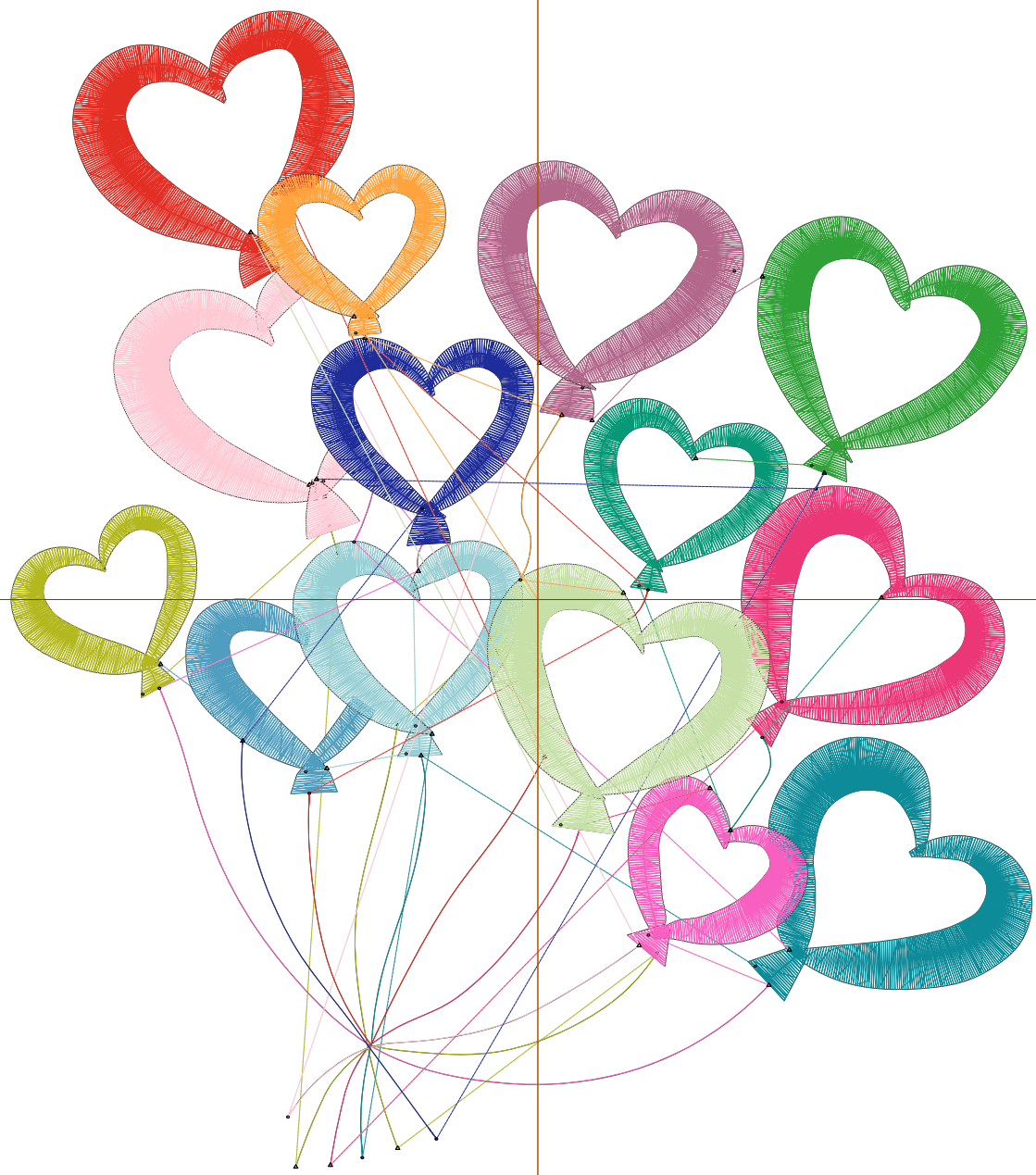
Wilcom EmbroideryStudio - Designing



Design: **6**

Title:

Stitches: 12,666  
Height: 6.50 in  
Width: 5.74 in  
Colors: 14  
Colorway: Colorway 1  
Zoom: 1:1



# Production Worksheet

Wilcom EmbroideryStudio - Designing



Design: **6**

Title:

Stitches: 12,666  
 Height: 6.50 in  
 Width: 5.74 in  
 Colors: 14  
 Colorway: Colorway 1  
 Zoom: 1:1

Machine format: Tajima  
 Color changes: 13  
 Stops: 14  
 Trims: 33  
 Appliqués: 0  
 Left: 75.2 mm  
 Right: 70.6 mm  
 Up: 84.1 mm  
 Down: 81.0 mm  
 EndX: 0.00 in  
 EndY: 0.00 in  
 Area 37.32 in<sup>2</sup>  
 Max stitch: 11.3 mm  
 Min stitch: 0.1 mm  
 Max jump: 7.0 mm  
 Total thread: 315.88ft  
 Total bobbin: 135.22ft

Stop Sequence:

#	N#	Color	St.	Code	Name	Chart
1.	2		779		R179 G184 B31	
2.	4		540		R79 G157 B191	
3.	5		845		R151 G207 B212	
4.	7		1,112		R14 G139 B153	
5.	6		768		R247 G95 B192	
6.	8		1,113		R235 G55 B118	
7.	9		710		R7 G153 B119	
8.	10		1,041		R47 G161 B55	
9.	11		1,041		R179 G104 B139	
10.	13		881		R255 G201 B211	
11.	12		903		R30 G45 B153	
12.	15		1,113		R227 G46 B36	
13.	3		1,117		R199 G224 B167	
14.	14		701		R255 G164 B60	

# Production Worksheet

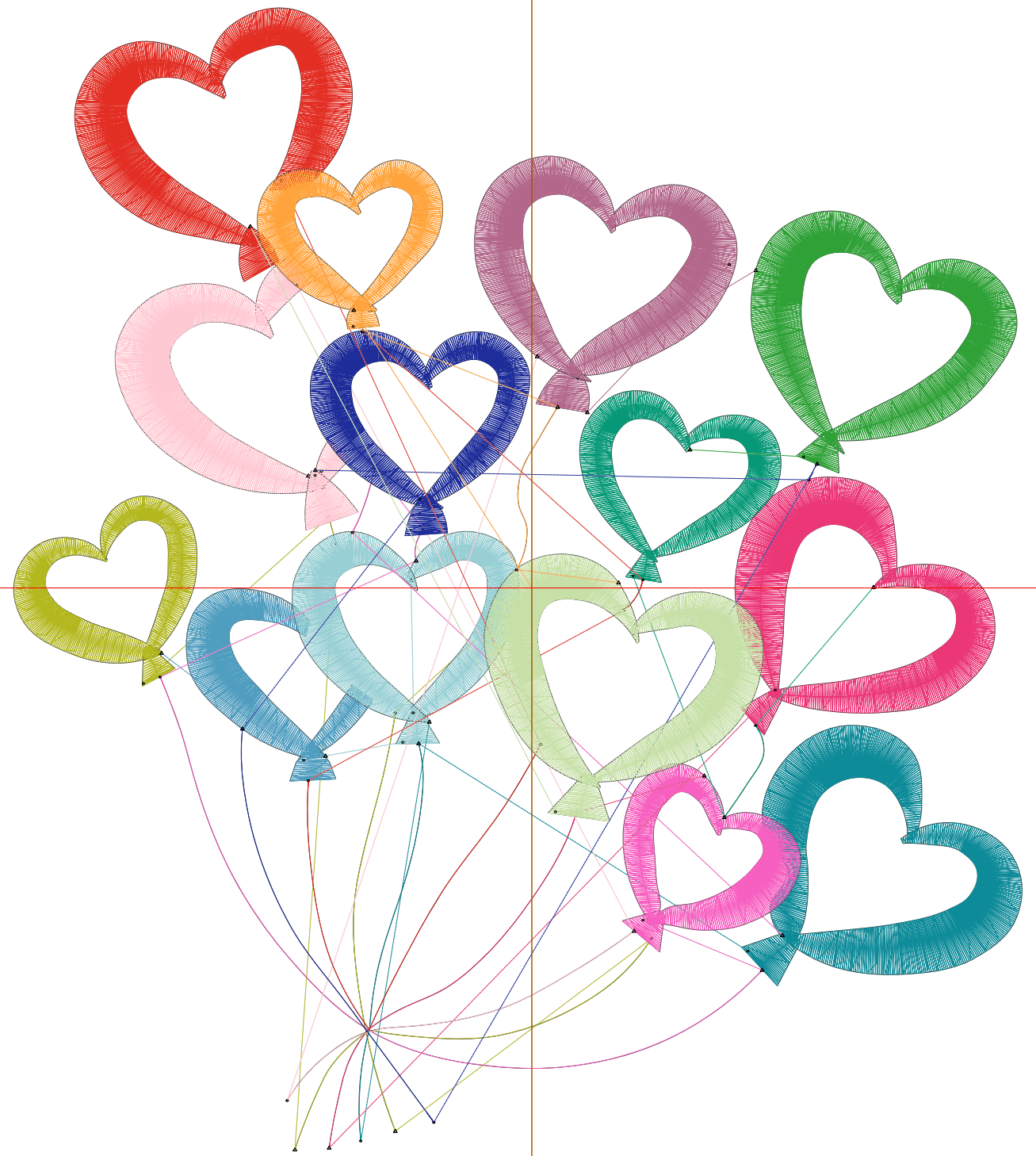
Wilcom EmbroideryStudio - Designing



Design: **7**

Title:

Stitches: 14,981  
Height: 7.50 in  
Width: 6.63 in  
Colors: 14  
Colorway: Colorway 1  
Zoom: 1:1



# Production Worksheet

Wilcom EmbroideryStudio - Designing



Design: **7**

Title:

Stitches: 14,981  
 Height: 7.50 in  
 Width: 6.63 in  
 Colors: 14  
 Colorway: Colorway 1  
 Zoom: 1:1

Machine format: Tajima  
 Color changes: 13  
 Stops: 14  
 Trims: 33  
 Appliqués: 0  
 Left: 86.4 mm  
 Right: 81.8 mm  
 Up: 96.8 mm  
 Down: 93.7 mm  
 EndX: 0.00 in  
 EndY: 0.00 in  
 Area 49.69 in<sup>2</sup>  
 Max stitch: 10.3 mm  
 Min stitch: 0.1 mm  
 Max jump: 7.0 mm  
 Total thread: 410.30ft  
 Total bobbin: 182.17ft

Stop Sequence:

#	N#	Color	St.	Code	Name	Chart
1.	2		918		R179 G184 B31	
2.	4		651		R79 G157 B191	
3.	5		1,013		R151 G207 B212	
4.	7		1,310		R14 G139 B153	
5.	6		909		R247 G95 B192	
6.	8		1,310		R235 G55 B118	
7.	9		836		R7 G153 B119	
8.	10		1,242		R47 G161 B55	
9.	11		1,237		R179 G104 B139	
10.	13		1,042		R255 G201 B211	
11.	12		1,062		R30 G45 B153	
12.	15		1,311		R227 G46 B36	
13.	3		1,313		R199 G224 B167	
14.	14		825		R255 G164 B60	