

Production Worksheet

Wilcom EmbroideryStudio - Designing



Design: **3**

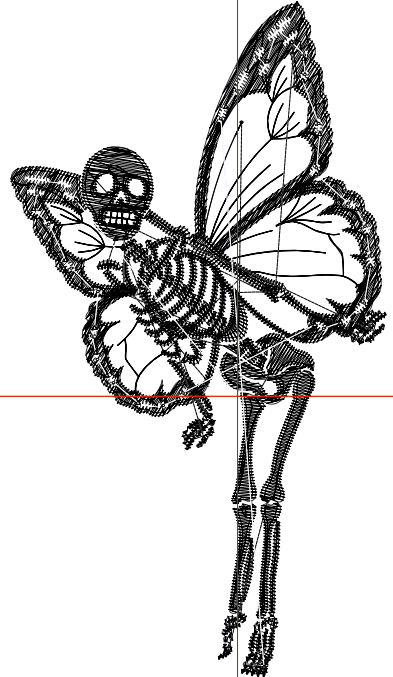
Title:

Stitches: 7,017
 Height: 3.51 in
 Width: 1.96 in
 Colors: 2
 Colorway: Colorway 1
 Zoom: 1:1

Machine format: Tajima
 Color changes: 1
 Stops: 2
 Trims: 50
 Appliqués: 0
 Left: 30.0 mm
 Right: 19.7 mm
 Up: 52.0 mm
 Down: 37.1 mm
 EndX: 0.00 in
 EndY: 0.00 in
 Area: 6.86 in²
 Max stitch: 6.6 mm
 Min stitch: 0.0 mm
 Max jump: 6.6 mm
 Total thread: 85.72ft
 Total bobbin: 23.12ft

Stop Sequence:

#	N#	Color	St.	Code	Name	Chart
1.	8		6,325	8	Black	Default
2.	9		690	9	White	Default



Production Worksheet

Wilcom EmbroideryStudio - Designing



Design: **4**

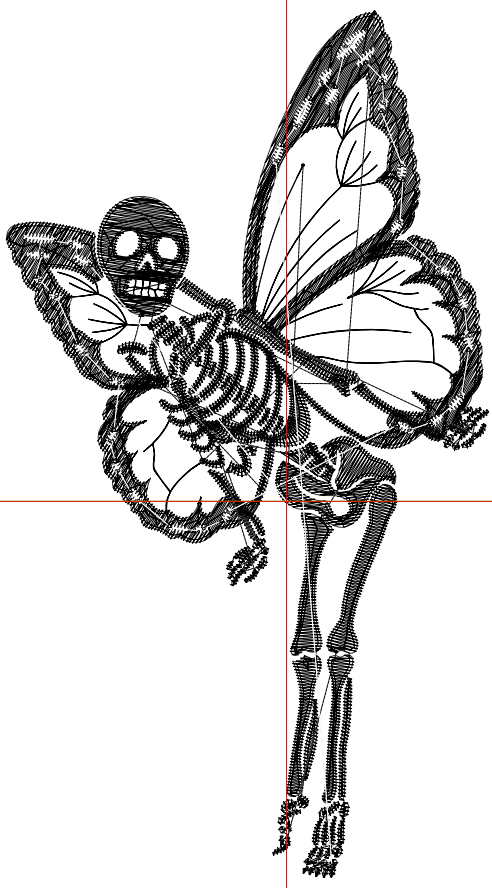
Title:

Stitches: 8,916
 Height: 4.51 in
 Width: 2.51 in
 Colors: 2
 Colorway: Colorway 1
 Zoom: 1:1

Machine format: Tajima
 Color changes: 1
 Stops: 2
 Trims: 54
 Appliqués: 0
 Left: 37.1 mm
 Right: 26.8 mm
 Up: 64.7 mm
 Down: 49.8 mm
 EndX: 0.00 in
 EndY: 0.00 in
 Area: 11.32 in²
 Max stitch: 7.3 mm
 Min stitch: 0.0 mm
 Max jump: 6.9 mm
 Total thread: 116.69ft
 Total bobbin: 34.09ft

Stop Sequence:

#	N#	Color	St.	Code	Name	Chart
1.	8		8,101	8	Black	Default
2.	9		813	9	White	Default



Production Worksheet

Wilcom EmbroideryStudio - Designing



Design: **5**

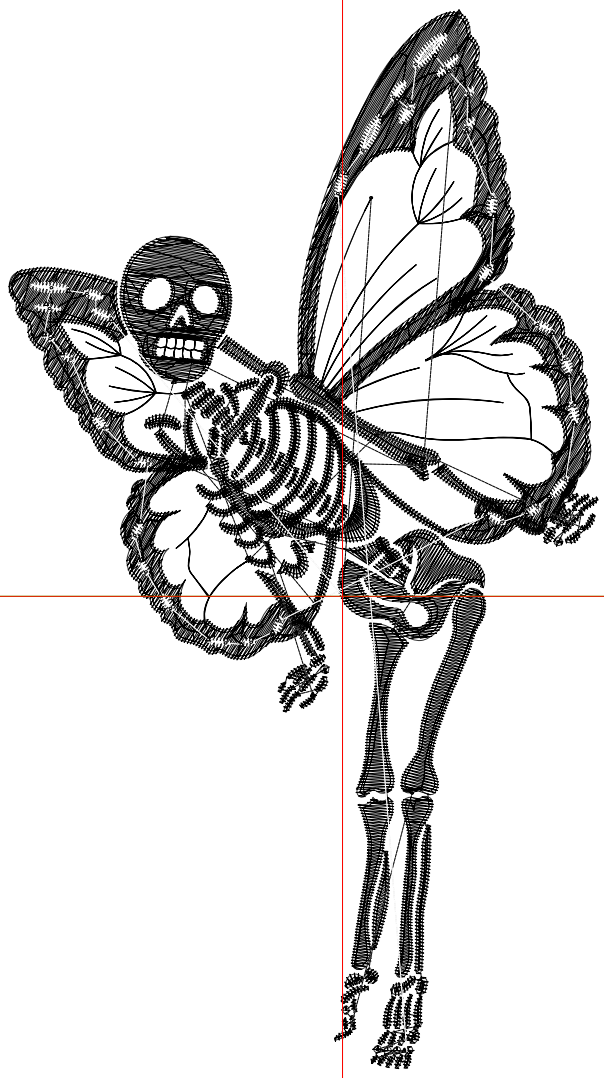
Title:

Stitches: 10,972
 Height: 5.51 in
 Width: 3.07 in
 Colors: 2
 Colorway: Colorway 1
 Zoom: 1:1

Machine format: Tajima
 Color changes: 1
 Stops: 2
 Trims: 60
 Appliqués: 0
 Left: 44.1 mm
 Right: 33.8 mm
 Up: 77.4 mm
 Down: 62.5 mm
 EndX: 0.00 in
 EndY: 0.00 in
 Area: 16.91 in²
 Max stitch: 7.9 mm
 Min stitch: 0.0 mm
 Max jump: 6.8 mm
 Total thread: 152.62ft
 Total bobbin: 47.39ft

Stop Sequence:

#	N#	Color	St.	Code	Name	Chart
1.	8		9,983	8	Black	Default
2.	9		987	9	White	Default



Production Worksheet

Wilcom EmbroideryStudio - Designing



Design: **6**

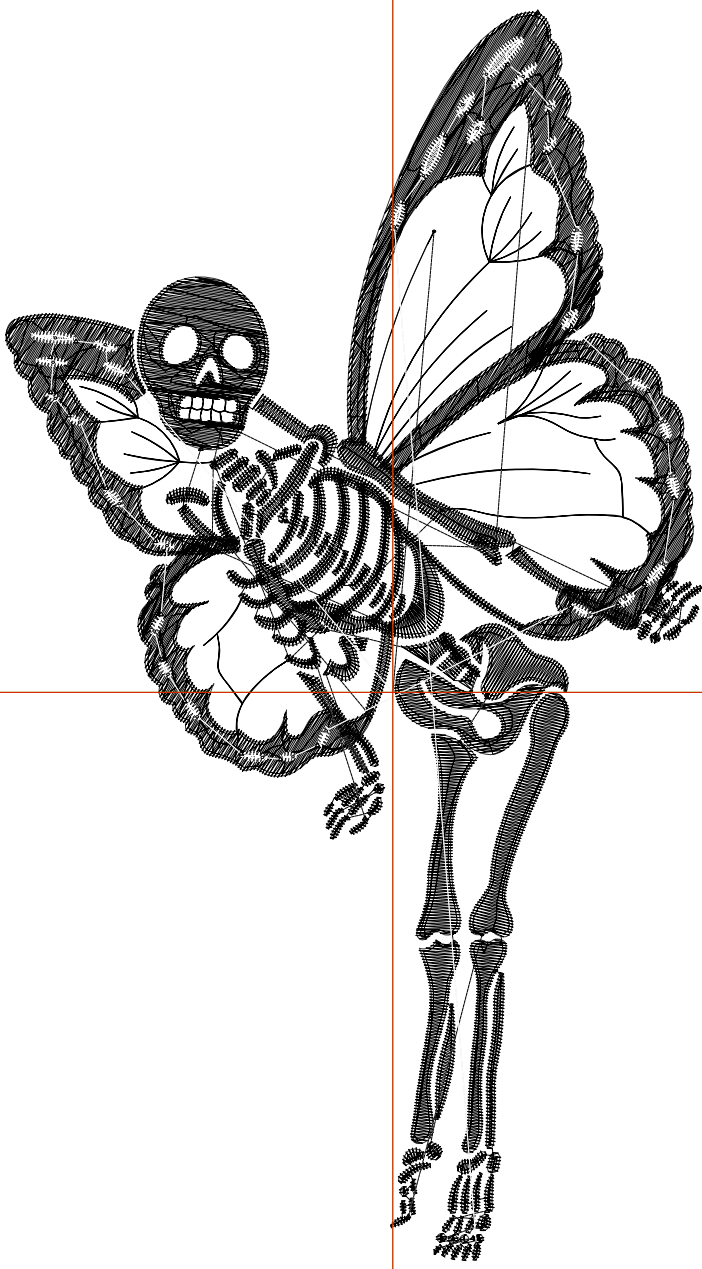
Title:

Stitches: 13,136
 Height: 6.51 in
 Width: 3.63 in
 Colors: 2
 Colorway: Colorway 1
 Zoom: 1:1

Machine format: Tajima
 Color changes: 1
 Stops: 2
 Trims: 61
 Appliqués: 0
 Left: 51.2 mm
 Right: 40.9 mm
 Up: 90.1 mm
 Down: 75.2 mm
 EndX: 0.00 in
 EndY: 0.00 in
 Area: 23.60 in²
 Max stitch: 10.7 mm
 Min stitch: 0.0 mm
 Max jump: 7.0 mm
 Total thread: 192.51ft
 Total bobbin: 62.61ft

Stop Sequence:

#	N#	Color	St.	Code	Name	Chart
1.	8		12,018	8	Black	Default
2.	9		1,116	9	White	Default



Production Worksheet

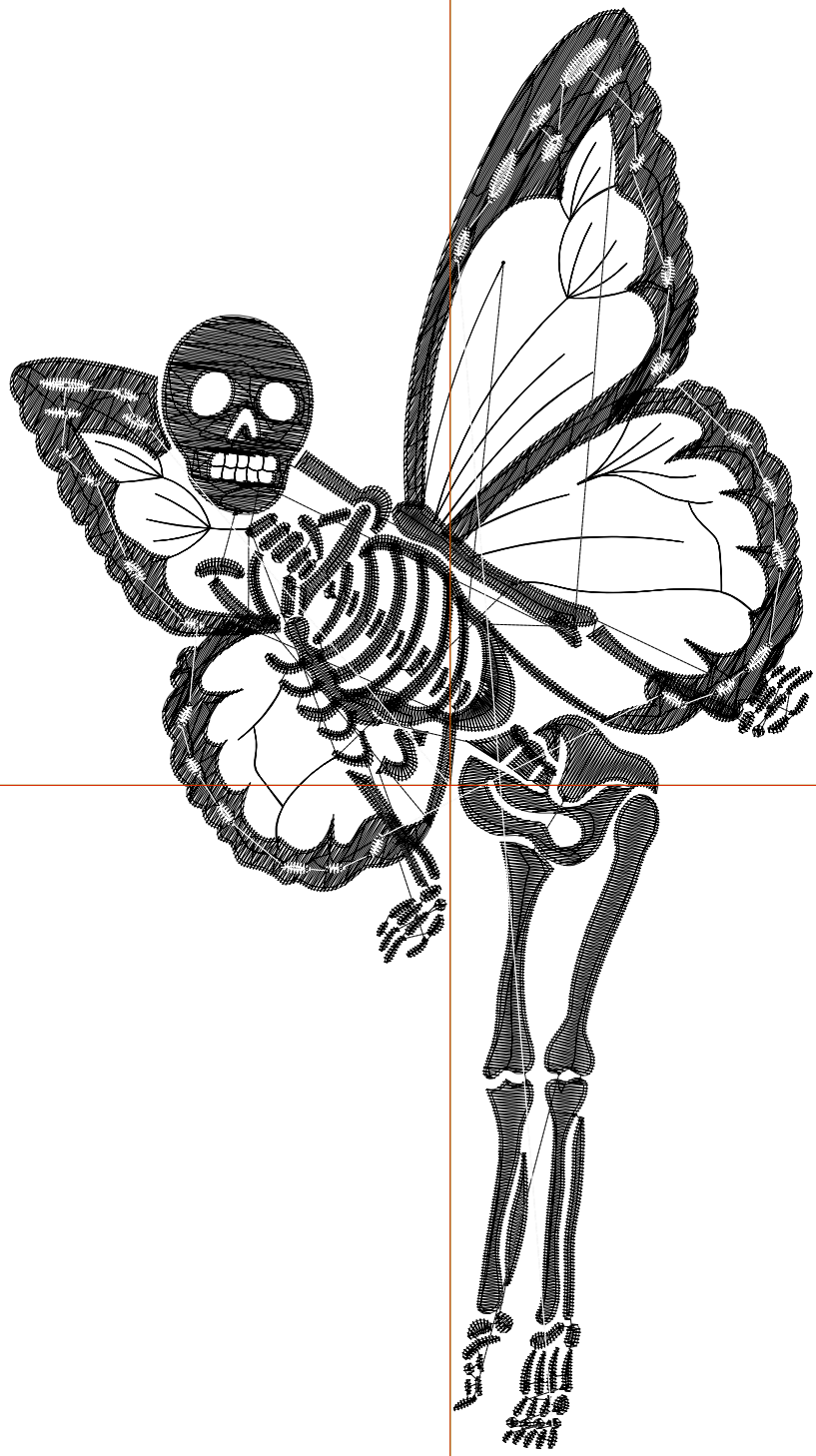
Wilcom EmbroideryStudio - Designing



Design: **7**

Title:

Stitches: 15,248
Height: 7.51 in
Width: 4.18 in
Colors: 2
Colorway: Colorway 1
Zoom: 1:1



Machine format: Tajima
Color changes: 1
Stops: 2
Trims: 62
Appliqués: 0
Left: 58.3 mm
Right: 48.0 mm
Up: 102.8 mm
Down: 87.9 mm
EndX: 0.00 in
EndY: 0.00 in
Area: 31.41 in²
Max stitch: 11.7 mm
Min stitch: 0.0 mm
Max jump: 6.9 mm
Total thread: 235.46ft
Total bobbin: 79.85ft

Stop Sequence:

#	N#	Color	St.	Code	Name	Chart
1.	8		14,007	8	Black	Default
2.	9		1,239	9	White	Default