

# Production Worksheet

Wilcom EmbroideryStudio - Designing



Design: **3**

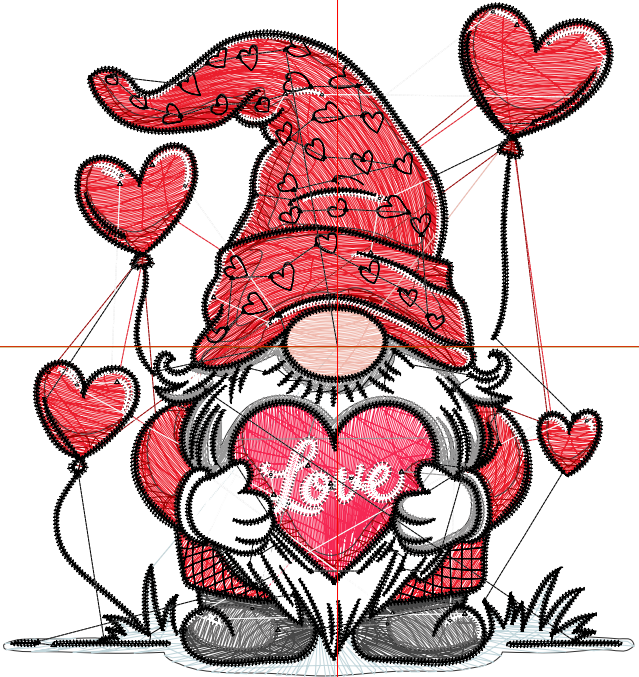
Title:

Stitches: 27,564  
 Height: 3.51 in  
 Width: 3.28 in  
 Colors: 10  
 Colorway: Colorway 1  
 Zoom: 1:1

Machine format: Tajima  
 Color changes: 9  
 Stops: 10  
 Trims: 117  
 Appliqués: 0  
 Left: 43.9 mm  
 Right: 39.3 mm  
 Up: 45.5 mm  
 Down: 43.7 mm  
 EndX: 0.00 in  
 EndY: 0.00 in  
 Area: 11.51 in<sup>2</sup>  
 Max stitch: 12.0 mm  
 Min stitch: 0.0 mm  
 Max jump: 7.0 mm  
 Total thread: 369.73ft  
 Total bobbin: 109.97ft

Stop Sequence:

#	N#	Color	St.	Code	Name	Chart
1.	5		466		R194 G214 B219	
2.	6		744		R71 G71 B71	
3.	2		5,388		R235 G30 B44	
4.	3		928		R245 G40 B84	
5.	11		1,430	11	Dark Red	Default
6.	7		266		R240 G185 B174	
7.	4		462		R105 G104 B104	
8.	9		5,111	9	White	Default
9.	1		1,897		R153 G152 B152	
10.	8		10,870	8	Black	Default



# Production Worksheet

Wilcom EmbroideryStudio - Designing



Design: **4**

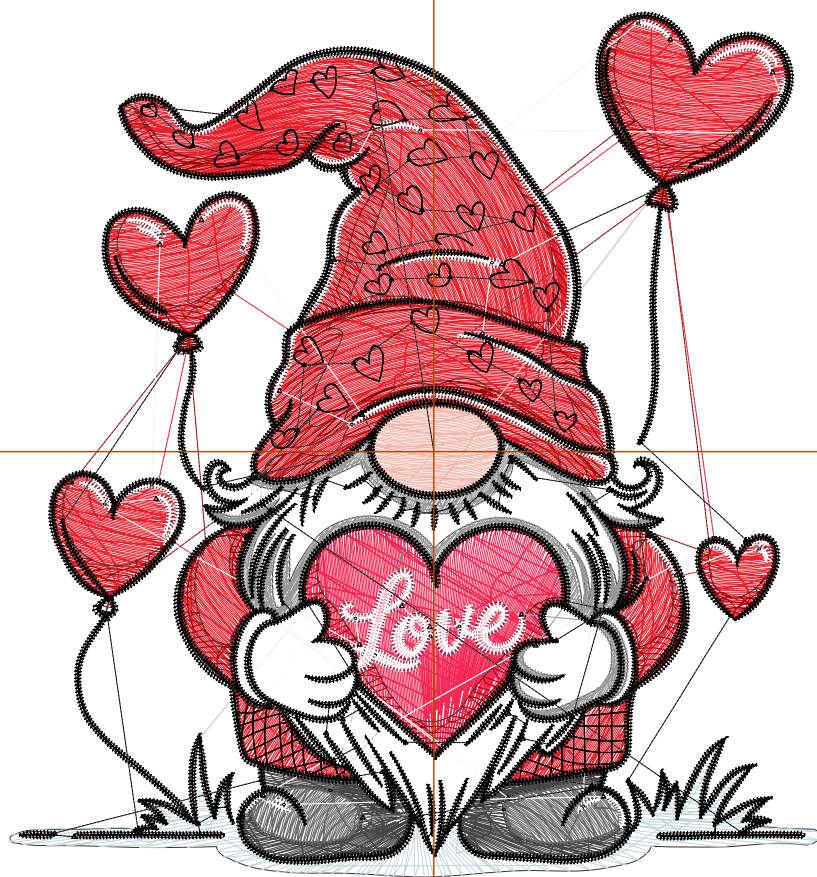
Title:

Stitches: 36,820  
 Height: 4.51 in  
 Width: 4.22 in  
 Colors: 10  
 Colorway: Colorway 1  
 Zoom: 1:1

Machine format: Tajima  
 Color changes: 9  
 Stops: 10  
 Trims: 125  
 Appliqués: 0  
 Left: 56.1 mm  
 Right: 51.0 mm  
 Up: 58.2 mm  
 Down: 56.4 mm  
 EndX: 0.00 in  
 EndY: 0.00 in  
 Area: 19.03 in<sup>2</sup>  
 Max stitch: 11.0 mm  
 Min stitch: 0.0 mm  
 Max jump: 7.0 mm  
 Total thread: 526.06ft  
 Total bobbin: 166.63ft

Stop Sequence:

#	N#	Color	St.	Code	Name	Chart
1.	5		618		R194 G214 B219	
2.	6		1,009		R71 G71 B71	
3.	2		8,111		R235 G30 B44	
4.	3		1,386		R245 G40 B84	
5.	11		1,898	11	Dark Red	Default
6.	7		393		R240 G185 B174	
7.	4		660		R105 G104 B104	
8.	9		6,776	9	White	Default
9.	1		2,463		R153 G152 B152	
10.	8		13,504	8	Black	Default



# Production Worksheet

Wilcom EmbroideryStudio - Designing



Design: **5**

Title:

Stitches: 47,087  
Height: 5.51 in  
Width: 5.17 in  
Colors: 10  
Colorway: Colorway 1  
Zoom: 1:1



# Production Worksheet

Wilcom EmbroideryStudio - Designing



Design: **5**

Title:

Stitches: 47,087  
 Height: 5.51 in  
 Width: 5.17 in  
 Colors: 10  
 Colorway: Colorway 1  
 Zoom: 1:1

Machine format: Tajima  
 Color changes: 9  
 Stops: 10  
 Trims: 133  
 Appliqués: 0  
 Left: 68.1 mm  
 Right: 63.2 mm  
 Up: 70.9 mm  
 Down: 69.1 mm  
 EndX: 0.00 in  
 EndY: 0.00 in  
 Area 28.49 in<sup>2</sup>  
 Max stitch: 11.9 mm  
 Min stitch: 0.0 mm  
 Max jump: 6.9 mm  
 Total thread: 708.77ft  
 Total bobbin: 234.97ft

Stop Sequence:

#	N#	Color	St.	Code	Name	Chart
1.	5		801		R194 G214 B219	
2.	6		1,294		R71 G71 B71	
3.	2		11,283		R235 G30 B44	
4.	3		1,947		R245 G40 B84	
5.	11		2,469	11	Dark Red	Default
6.	7		557		R240 G185 B174	
7.	4		898		R105 G104 B104	
8.	9		8,570	9	White	Default
9.	1		3,061		R153 G152 B152	
10.	8		16,205	8	Black	Default

# Production Worksheet

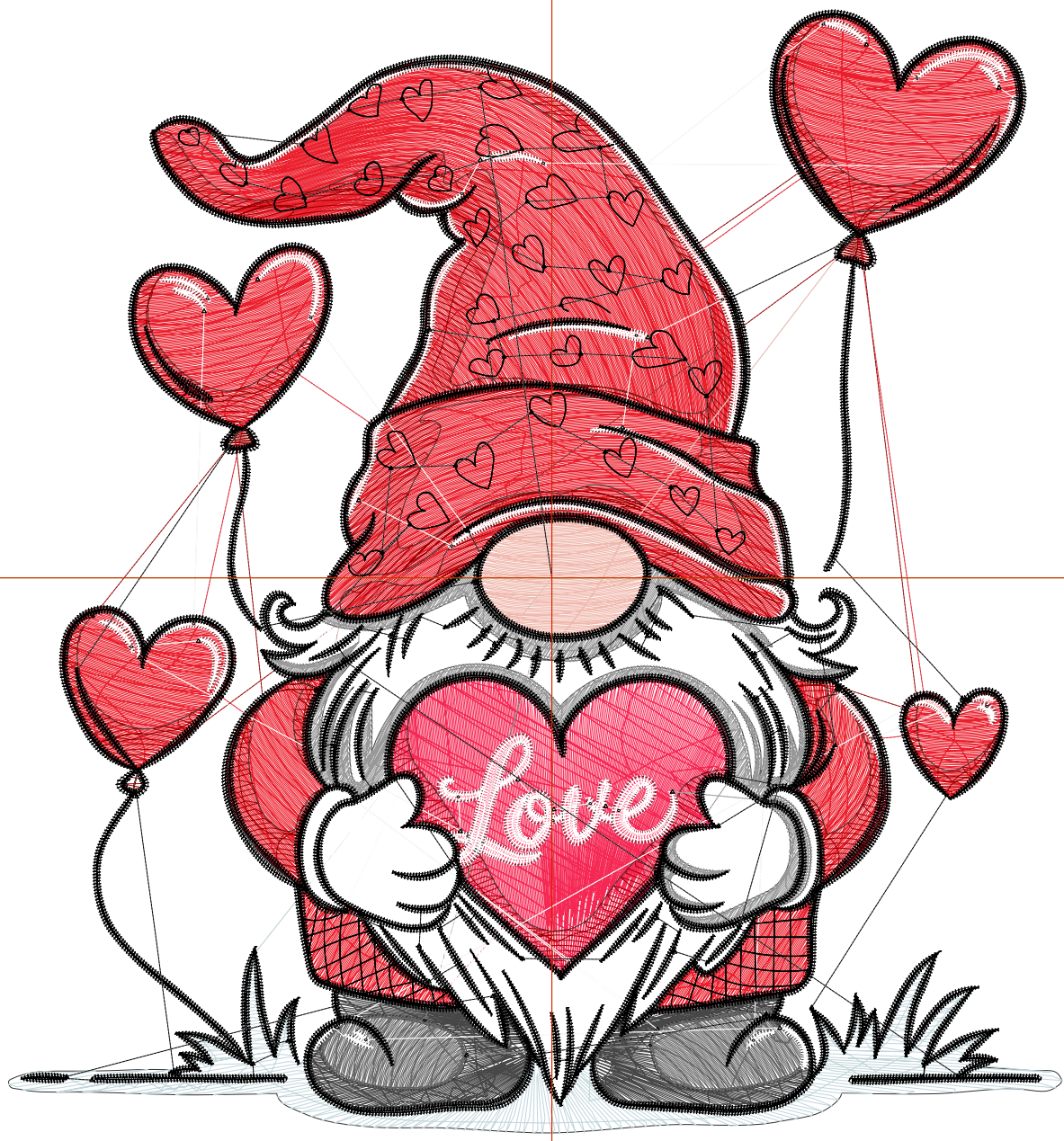
Wilcom EmbroideryStudio - Designing



Design: 6

Title:

Stitches: 58,307  
Height: 6.51 in  
Width: 6.11 in  
Colors: 10  
Colorway: Colorway 1  
Zoom: 1:1



# Production Worksheet

Wilcom EmbroideryStudio - Designing



Design: **6**

Title:

Stitches: 58,307  
 Height: 6.51 in  
 Width: 6.11 in  
 Colors: 10  
 Colorway: Colorway 1  
 Zoom: 1:1

Machine format: Tajima  
 Color changes: 9  
 Stops: 10  
 Trims: 138  
 Appliqués: 0  
 Left: 79.9 mm  
 Right: 75.1 mm  
 Up: 83.6 mm  
 Down: 81.8 mm  
 EndX: 0.00 in  
 EndY: 0.00 in  
 Area 39.76 in<sup>2</sup>  
 Max stitch: 12.0 mm  
 Min stitch: 0.0 mm  
 Max jump: 7.0 mm  
 Total thread: 915.93ft  
 Total bobbin: 314.11ft

Stop Sequence:

#	N#	Color	St.	Code	Name	Chart
1.	5		987		R194 G214 B219	
2.	6		1,628		R71 G71 B71	
3.	2		14,990		R235 G30 B44	
4.	3		2,594		R245 G40 B84	
5.	11		3,026	11	Dark Red	Default
6.	7		733		R240 G185 B174	
7.	4		1,183		R105 G104 B104	
8.	9		10,608	9	White	Default
9.	1		3,700		R153 G152 B152	
10.	8		18,856	8	Black	Default

# Production Worksheet

Wilcom EmbroideryStudio - Designing



Design: 7

Title:

Stitches: 70,638  
Height: 7.51 in  
Width: 7.04 in  
Colors: 10  
Colorway: Colorway 1  
Zoom: 1:1



# Production Worksheet

Wilcom EmbroideryStudio - Designing



Design: **7**

Title:

Stitches: 70,638  
 Height: 7.51 in  
 Width: 7.04 in  
 Colors: 10  
 Colorway: Colorway 1  
 Zoom: 1:1

Machine format: Tajima  
 Color changes: 9  
 Stops: 10  
 Trims: 143  
 Appliqués: 0  
 Left: 91.9 mm  
 Right: 87.0 mm  
 Up: 96.3 mm  
 Down: 94.5 mm  
 EndX: 0.00 in  
 EndY: 0.00 in  
 Area 52.92 in<sup>2</sup>  
 Max stitch: 11.0 mm  
 Min stitch: 0.0 mm  
 Max jump: 7.0 mm  
 Total thread: 1153.08ft  
 Total bobbin: 406.70ft

Stop Sequence:

#	N#	Color	St.	Code	Name	Chart
1.	5		1,209		R194 G214 B219	
2.	6		1,958		R71 G71 B71	
3.	2		19,309		R235 G30 B44	
4.	3		3,341		R245 G40 B84	
5.	11		3,733	11	Dark Red	Default
6.	7		948		R240 G185 B174	
7.	4		1,510		R105 G104 B104	
8.	9		12,728	9	White	Default
9.	1		4,350		R153 G152 B152	
10.	8		21,550	8	Black	Default