

Production Worksheet

Wilcom EmbroideryStudio - Designing



Design: **2**

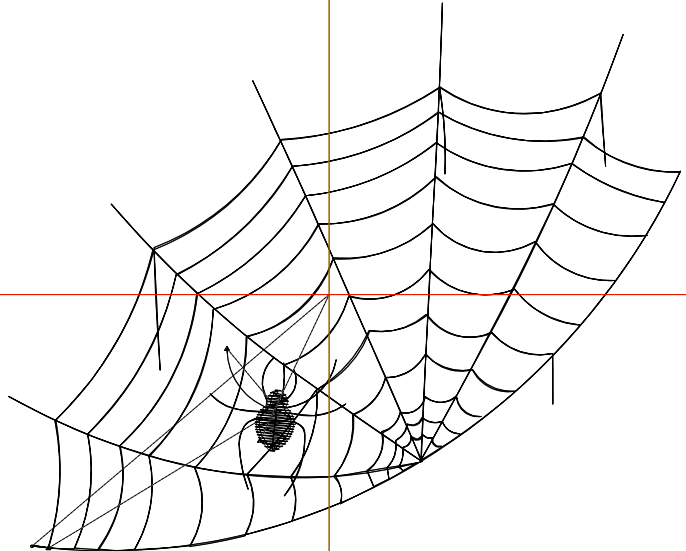
Title:

Stitches: 1,403
 Height: 2.85 in
 Width: 3.50 in
 Colors: 1
 Colorway: Colorway 1
 Zoom: 1:1

Machine format: Tajima
 Color changes: 0
 Stops: 1
 Trims: 3
 Appliqués: 0
 Left: 42.4 mm
 Right: 46.5 mm
 Up: 38.6 mm
 Down: 33.9 mm
 EndX: 0.00 in
 EndY: 0.00 in
 Area: 9.99 in²
 Max stitch: 6.5 mm
 Min stitch: 0.5 mm
 Max jump: 6.6 mm
 Total thread: 21.76ft
 Total bobbin: 7.24ft

Stop Sequence:

#	N#	Color	St.	Code	Name	Chart
1.	8	█	1,401	8	Black	Default



Production Worksheet

Wilcom EmbroideryStudio - Designing



Design: **3**

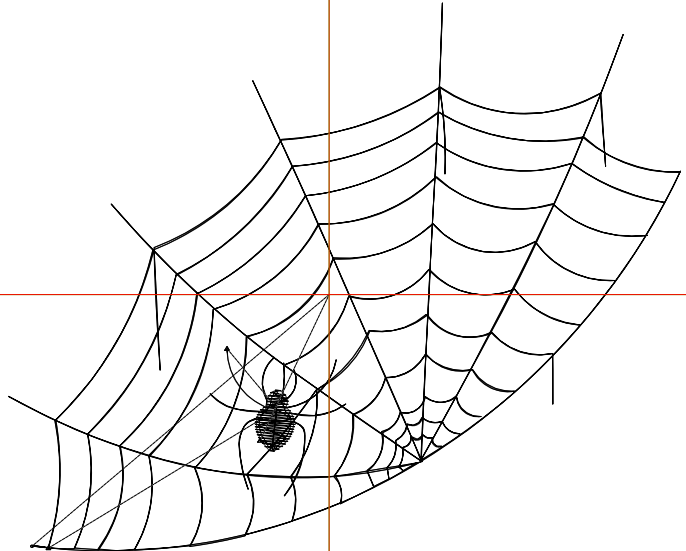
Title:

Stitches: 1,403
 Height: 2.85 in
 Width: 3.50 in
 Colors: 1
 Colorway: Colorway 1
 Zoom: 1:1

Machine format: Tajima
 Color changes: 0
 Stops: 1
 Trims: 3
 Appliqués: 0
 Left: 42.4 mm
 Right: 46.5 mm
 Up: 38.6 mm
 Down: 33.9 mm
 EndX: 0.00 in
 EndY: 0.00 in
 Area: 9.99 in²
 Max stitch: 6.5 mm
 Min stitch: 0.5 mm
 Max jump: 6.6 mm
 Total thread: 21.76ft
 Total bobbin: 7.24ft

Stop Sequence:

#	N#	Color	St.	Code	Name	Chart
1.	8	█	1,401	8	Black	Default



Production Worksheet

Wilcom EmbroideryStudio - Designing



Design: **4**

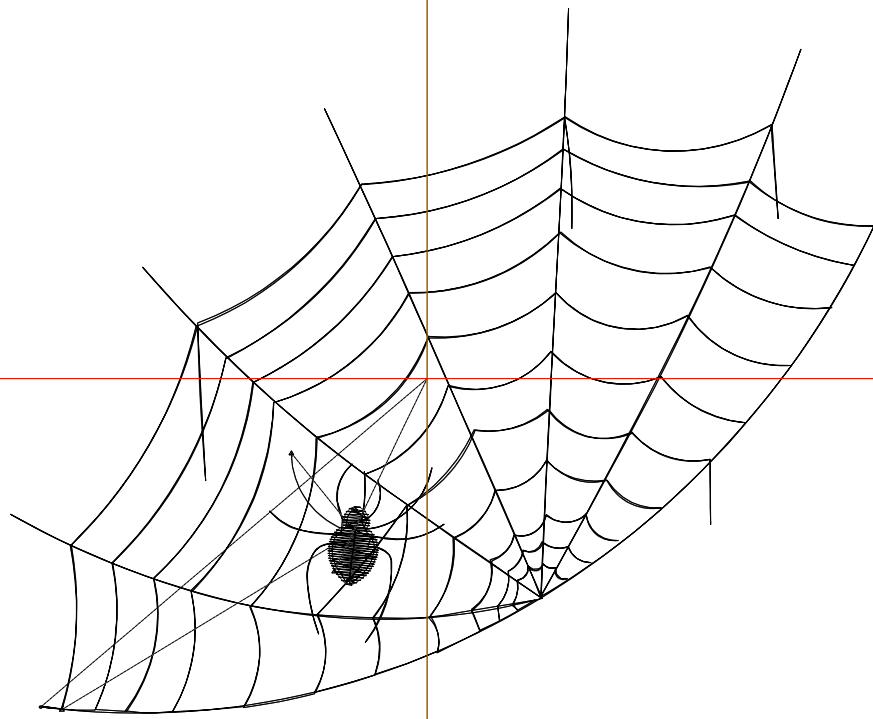
Title:

Stitches: 1,713
 Height: 3.67 in
 Width: 4.50 in
 Colors: 1
 Colorway: Colorway 1
 Zoom: 1:1

Machine format: Tajima
 Color changes: 0
 Stops: 1
 Trims: 3
 Appliqués: 0
 Left: 55.1 mm
 Right: 59.2 mm
 Up: 48.9 mm
 Down: 44.3 mm
 EndX: 0.00 in
 EndY: 0.00 in
 Area: 16.51 in²
 Max stitch: 6.7 mm
 Min stitch: 0.5 mm
 Max jump: 6.4 mm
 Total thread: 27.61ft
 Total bobbin: 9.51ft

Stop Sequence:

#	N#	Color	St.	Code	Name	Chart
1.	8	█	1,711	8	Black	Default



Production Worksheet

Wilcom EmbroideryStudio - Designing



Design: **5**

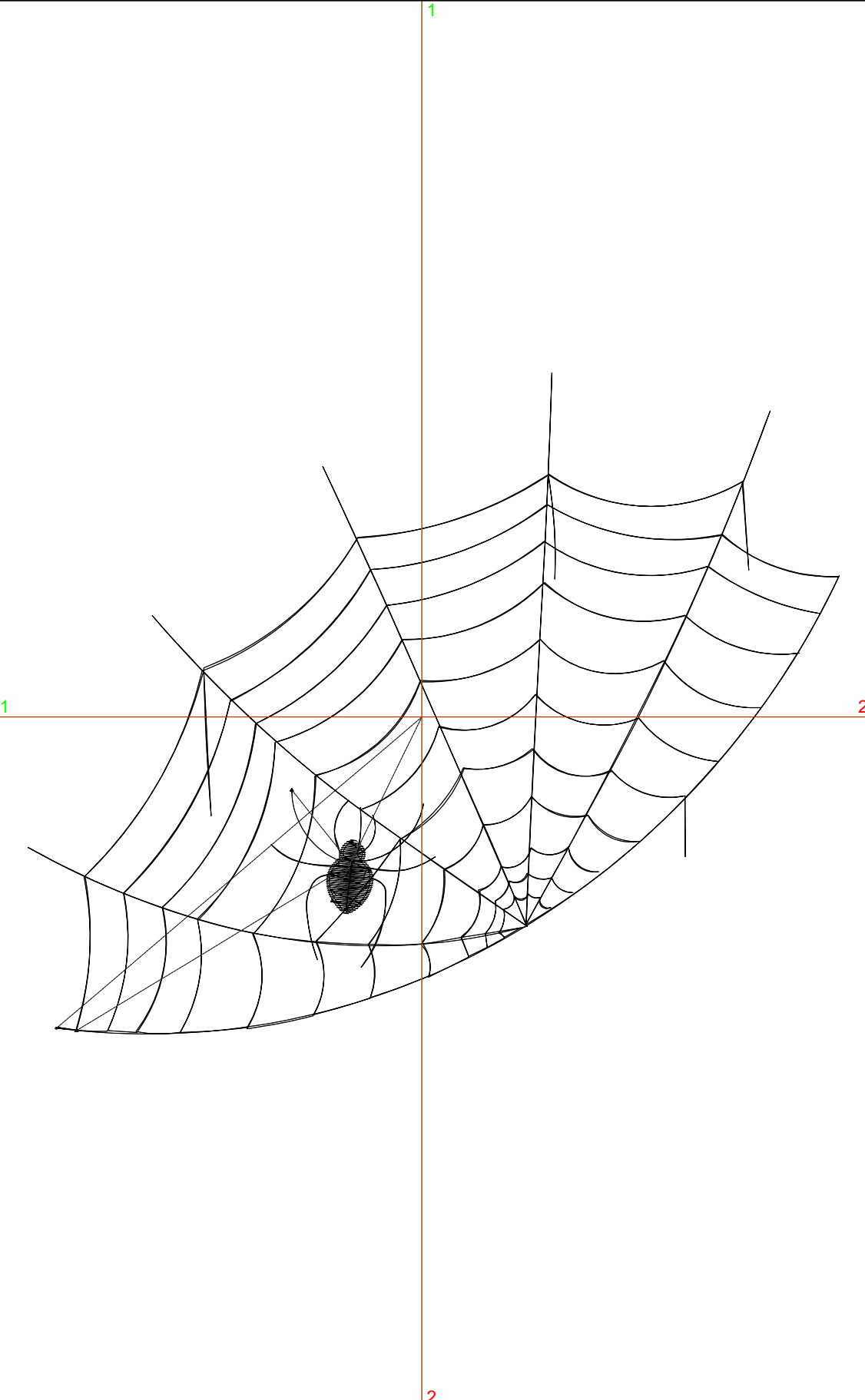
Title:

Stitches: 2,060
Height: 4.48 in
Width: 5.50 in
Colors: 1
Colorway: Colorway 1
Zoom: 1:1

Machine format: Tajima
Color changes: 0
Stops: 1
Trims: 3
Appliqués: 0
Left: 67.8 mm
Right: 71.9 mm
Up: 59.3 mm
Down: 54.6 mm
EndX: 0.00 in
EndY: 0.00 in
Area: 24.66 in²
Max stitch: 7.0 mm
Min stitch: 0.5 mm
Max jump: 7.0 mm
Total thread: 33.83ft
Total bobbin: 11.84ft

Stop Sequence:

#	N#	Color	St.	Code	Name	Chart
1.	8	█	2,058	8	Black	Default



Production Worksheet

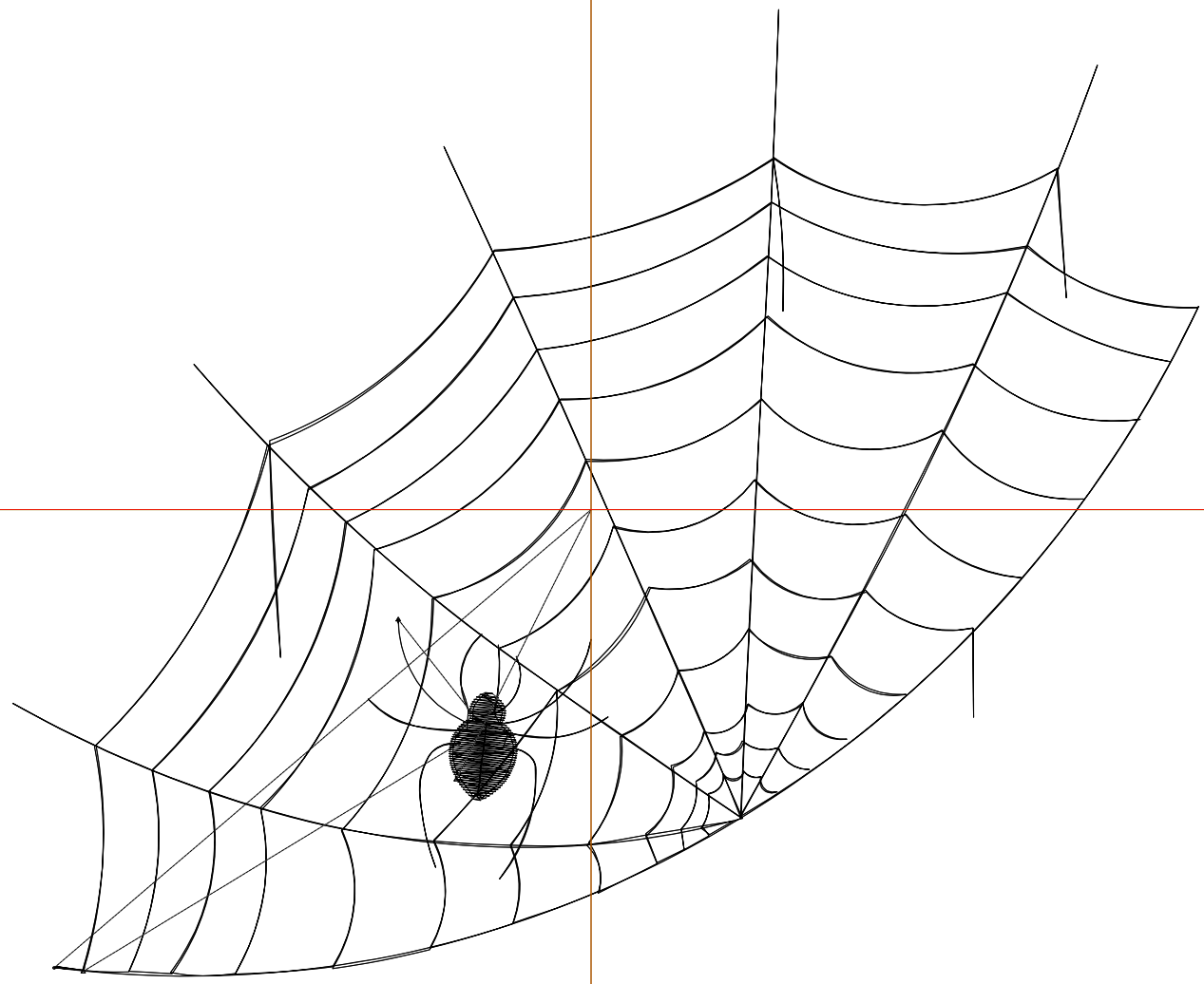
Wilcom EmbroideryStudio - Designing



Design: **6**

Title:

Stitches: 2,373
Height: 5.30 in
Width: 6.50 in
Colors: 1
Colorway: Colorway 1
Zoom: 1:1



Production Worksheet

Wilcom EmbroideryStudio - Designing



Design: **6**

Title:

Stitches: 2,373
 Height: 5.30 in
 Width: 6.50 in
 Colors: 1
 Colorway: Colorway 1
 Zoom: 1:1

Machine format: Tajima
 Color changes: 0
 Stops: 1
 Trims: 3
 Appliqués: 0
 Left: 80.5 mm
 Right: 84.6 mm
 Up: 69.6 mm
 Down: 65.0 mm
 EndX: 0.00 in
 EndY: 0.00 in
 Area 34.44 in²
 Max stitch: 6.8 mm
 Min stitch: 0.5 mm
 Max jump: 6.8 mm
 Total thread: 40.02ft
 Total bobbin: 14.29ft

Stop Sequence:

#	N#	Color	St.	Code	Name	Chart
1.	8	█	2,371	8	Black	Default

Production Worksheet

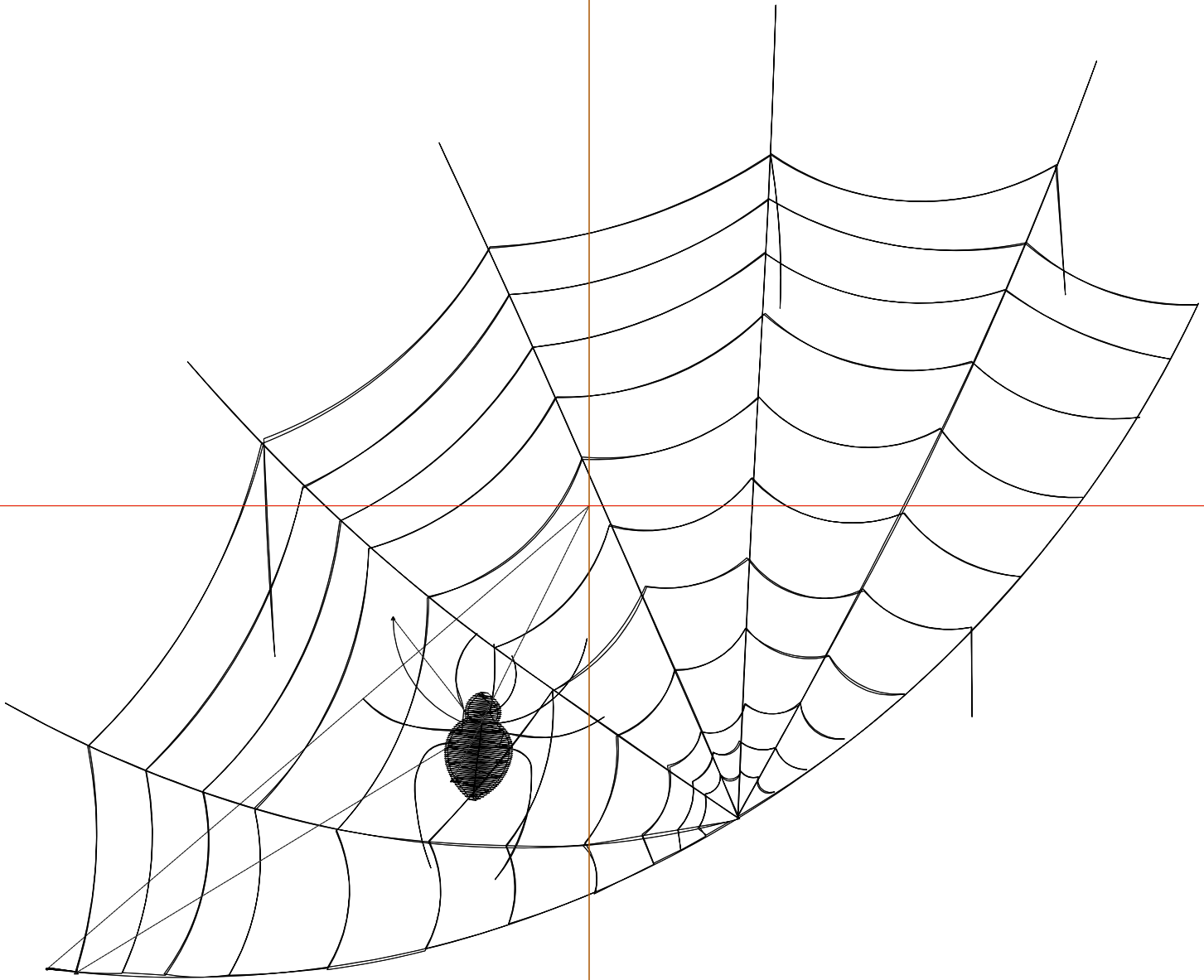
Wilcom EmbroideryStudio - Designing



Design: **7**

Title:

Stitches: 2,696
Height: 6.11 in
Width: 7.50 in
Colors: 1
Colorway: Colorway 1
Zoom: 1:1



Production Worksheet

Wilcom EmbroideryStudio - Designing



Design: **7**

Title:

Stitches: 2,696
 Height: 6.11 in
 Width: 7.50 in
 Colors: 1
 Colorway: Colorway 1
 Zoom: 1:1

Machine format: Tajima
 Color changes: 0
 Stops: 1
 Trims: 3
 Appliqués: 0
 Left: 93.2 mm
 Right: 97.3 mm
 Up: 80.0 mm
 Down: 75.3 mm
 EndX: 0.00 in
 EndY: 0.00 in
 Area 45.86 in²
 Max stitch: 6.9 mm
 Min stitch: 0.5 mm
 Max jump: 6.7 mm
 Total thread: 46.42ft
 Total bobbin: 16.83ft

Stop Sequence:

#	N#	Color	St.	Code	Name	Chart
1.	8	█	2,694	8	Black	Default