

Production Worksheet

Wilcom EmbroideryStudio - Designing



Design: **3**

Title:

Stitches: 27,157

Height: 3.51 in

Width: 3.12 in

Colors: 11

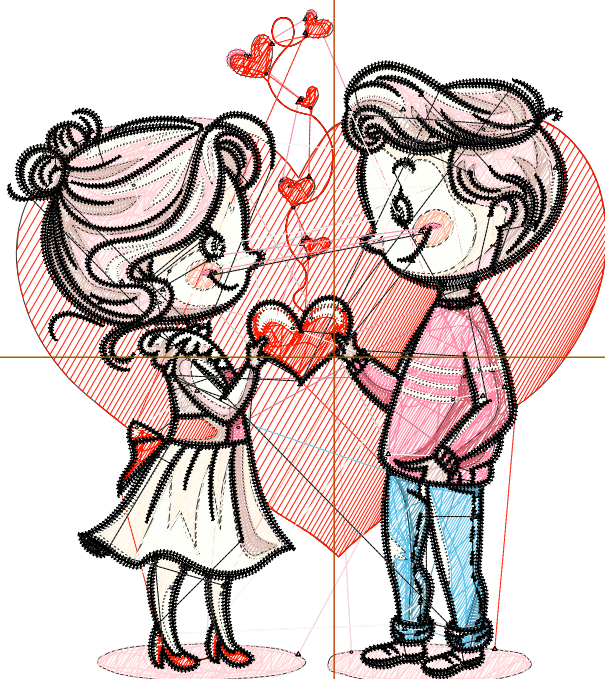
Colorway: Colorway 1

Zoom: 1:1

Machine format: Tajima
 Color changes: 19
 Stops: 20
 Trims: 156
 Appliqués: 0
 Left: 43.3 mm
 Right: 36.0 mm
 Up: 46.1 mm
 Down: 43.1 mm
 EndX: 0.00 in
 EndY: 0.00 in
 Area: 10.96 in²
 Max stitch: 12.0 mm
 Min stitch: 0.0 mm
 Max jump: 7.0 mm
 Total thread: 334.44ft
 Total bobbin: 88.70ft

Stop Sequence:

#	N#	Color	St.	Code	Name	Chart
1.	2		272	R255 G212 B215		
2.	10		257	R255 G27 B2		
3.	2		986	R255 G212 B215		
4.	10		659	R255 G27 B2		
5.	2		1,557	R255 G212 B215		
6.	10		276	R255 G27 B2		
7.	2		642	R255 G212 B215		
8.	1		1,293	R255 G245 B225		
9.	3		145	R255 G182 B154		
10.	4		2,562	R222 G188 B178		
11.	5		945	R255 G136 B166		
12.	6		525	R217 G96 B112		
13.	7		437	R94 G195 B232		
14.	9		310	R72 G150 B179		
15.	10		1,103	R255 G27 B2		
16.	11		3,924	R253 G255 B247		
17.	8		11,061	8 Black		Default
18.	11		35	R253 G255 B247		
19.	5		57	R255 G136 B166		
20.	8		109	8 Black		Default



Production Worksheet

Wilcom EmbroideryStudio - Designing



Design: **4**

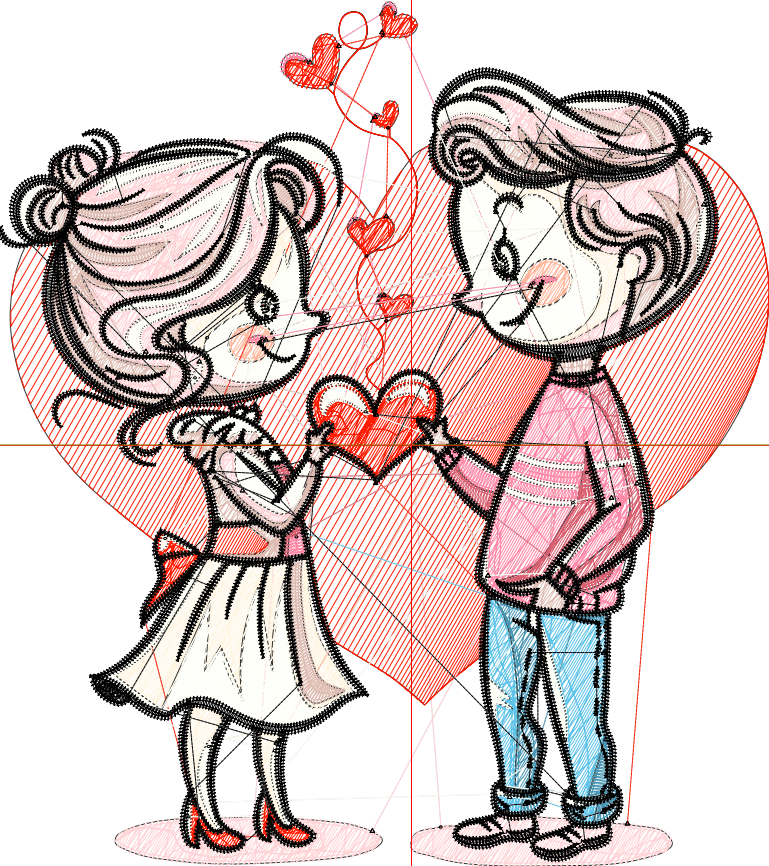
Title:

Stitches: 34,542
 Height: 4.51 in
 Width: 4.01 in
 Colors: 11
 Colorway: Colorway 1
 Zoom: 1:1

Machine format: Tajima
 Color changes: 19
 Stops: 20
 Trims: 173
 Appliqués: 0
 Left: 54.6 mm
 Right: 47.3 mm
 Up: 58.8 mm
 Down: 55.8 mm
 EndX: 0.00 in
 EndY: 0.00 in
 Area: 18.10 in²
 Max stitch: 10.0 mm
 Min stitch: 0.0 mm
 Max jump: 6.9 mm
 Total thread: 451.61ft
 Total bobbin: 129.42ft

Stop Sequence:

#	N#	Color	St.	Code	Name	Chart
1.	2		380		R255 G212 B215	
2.	10		371		R255 G27 B2	
3.	2		1,256		R255 G212 B215	
4.	10		935		R255 G27 B2	
5.	2		2,008		R255 G212 B215	
6.	10		360		R255 G27 B2	
7.	2		812		R255 G212 B215	
8.	1		1,687		R255 G245 B225	
9.	3		196		R255 G182 B154	
10.	4		3,265		R222 G188 B178	
11.	5		1,210		R255 G136 B166	
12.	6		674		R217 G96 B112	
13.	7		596		R94 G195 B232	
14.	9		395		R72 G150 B179	
15.	10		1,368		R255 G27 B2	
16.	11		5,003		R253 G255 B247	
17.	8		13,780	8	Black	Default
18.	11		43		R253 G255 B247	
19.	5		74		R255 G136 B166	
20.	8		127	8	Black	Default



Production Worksheet

Wilcom EmbroideryStudio - Designing



Design: **5**

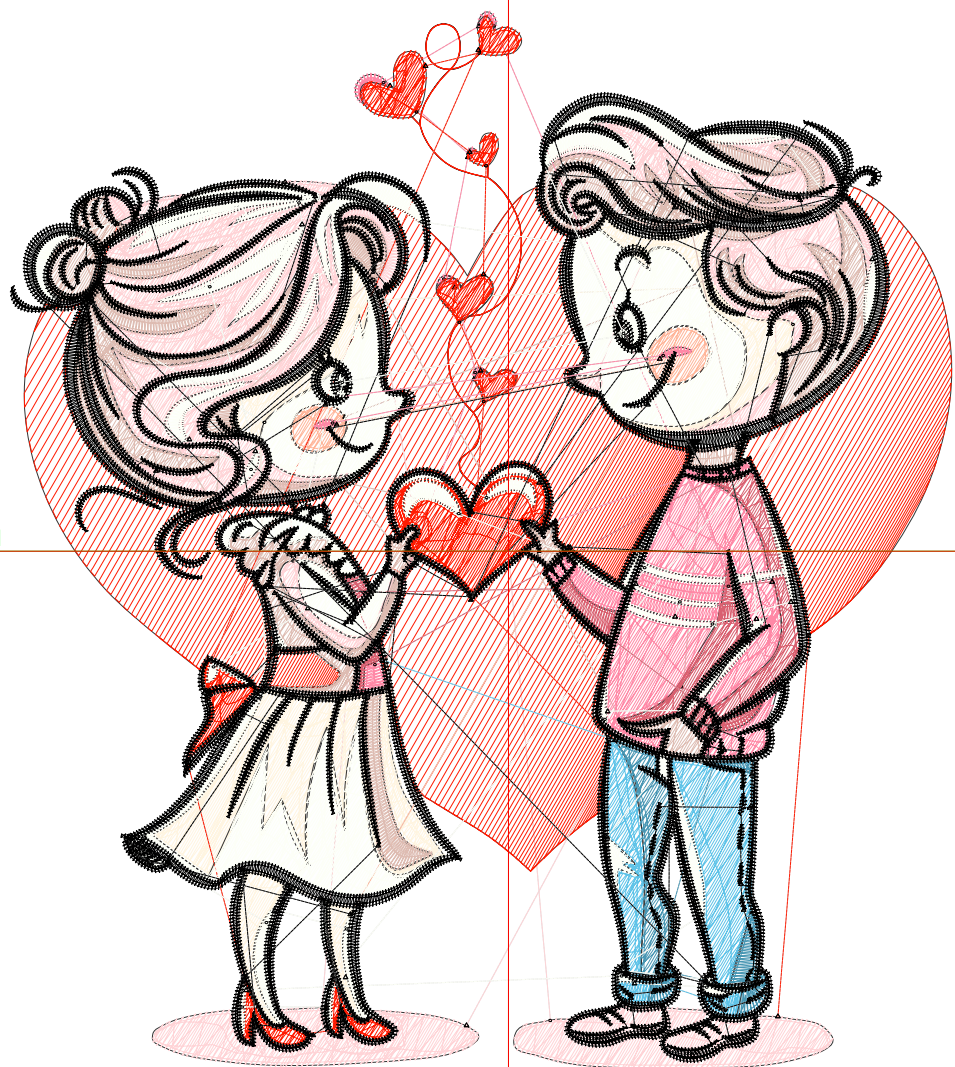
Title:

Stitches: 42,389
 Height: 5.51 in
 Width: 4.90 in
 Colors: 11
 Colorway: Colorway 1
 Zoom: 1:1

Machine format: Tajima
 Color changes: 19
 Stops: 20
 Trims: 188
 Appliqués: 0
 Left: 65.9 mm
 Right: 58.7 mm
 Up: 71.5 mm
 Down: 68.5 mm
 EndX: 0.00 in
 EndY: 0.00 in
 Area: 27.02 in²
 Max stitch: 10.5 mm
 Min stitch: 0.0 mm
 Max jump: 7.0 mm
 Total thread: 586.23ft
 Total bobbin: 178.68ft

Stop Sequence:

#	N#	Color	St.	Code	Name	Chart
1.	2		500	R255	G212 B215	
2.	10		465	R255	G27 B2	
3.	2		1,539	R255	G212 B215	
4.	10		1,295	R255	G27 B2	
5.	2		2,497	R255	G212 B215	
6.	10		485	R255	G27 B2	
7.	2		1,007	R255	G212 B215	
8.	1		2,248	R255	G245 B225	
9.	3		234	R255	G182 B154	
10.	4		3,992	R222	G188 B178	
11.	5		1,517	R255	G136 B166	
12.	6		801	R217	G96 B112	
13.	7		744	R94	G195 B232	
14.	9		490	R72	G150 B179	
15.	10		1,663	R255	G27 B2	
16.	11		6,170	R253	G255 B247	
17.	8		16,447	8	Black	Default
18.	11		58	R253	G255 B247	
19.	5		86	R255	G136 B166	
20.	8		149	8	Black	Default



Production Worksheet

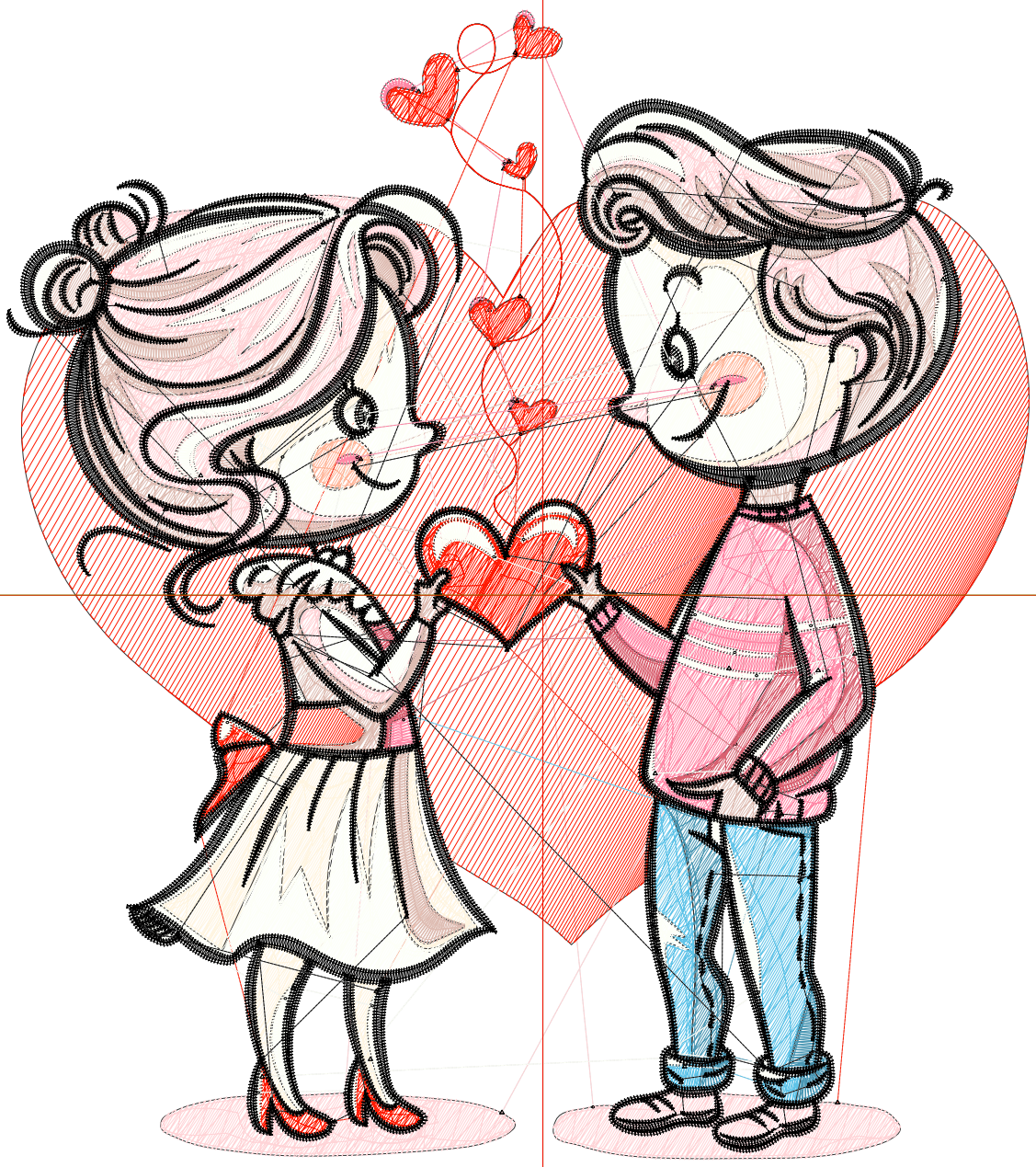
Wilcom EmbroideryStudio - Designing



Design: 6

Title:

Stitches: 50,389
Height: 6.51 in
Width: 5.79 in
Colors: 11
Colorway: Colorway 1
Zoom: 1:1



Production Worksheet

Wilcom EmbroideryStudio - Designing



Design: **6**

Title:

Stitches: 50,389
 Height: 6.51 in
 Width: 5.79 in
 Colors: 11
 Colorway: Colorway 1
 Zoom: 1:1

Machine format: Tajima
 Color changes: 19
 Stops: 20
 Trims: 194
 Appliqués: 0
 Left: 77.2 mm
 Right: 70.0 mm
 Up: 84.2 mm
 Down: 81.2 mm
 EndX: 0.00 in
 EndY: 0.00 in
 Area 37.72 in²
 Max stitch: 11.5 mm
 Min stitch: 0.0 mm
 Max jump: 6.9 mm
 Total thread: 733.03ft
 Total bobbin: 234.57ft

Stop Sequence:

#	N#	Color	St.	Code	Name	Chart
1.	2		636		R255 G212 B215	
2.	10		628		R255 G27 B2	
3.	2		1,808		R255 G212 B215	
4.	10		1,716		R255 G27 B2	
5.	2		3,017		R255 G212 B215	
6.	10		624		R255 G27 B2	
7.	2		1,201		R255 G212 B215	
8.	1		2,715		R255 G245 B225	
9.	3		294		R255 G182 B154	
10.	4		4,759		R222 G188 B178	
11.	5		1,819		R255 G136 B166	
12.	6		948		R217 G96 B112	
13.	7		931		R94 G195 B232	
14.	9		577		R72 G150 B179	
15.	10		1,958		R255 G27 B2	
16.	11		7,334		R253 G255 B247	
17.	8		19,098	8	Black	Default
18.	11		65		R253 G255 B247	
19.	5		94		R255 G136 B166	
20.	8		165	8	Black	Default

Production Worksheet

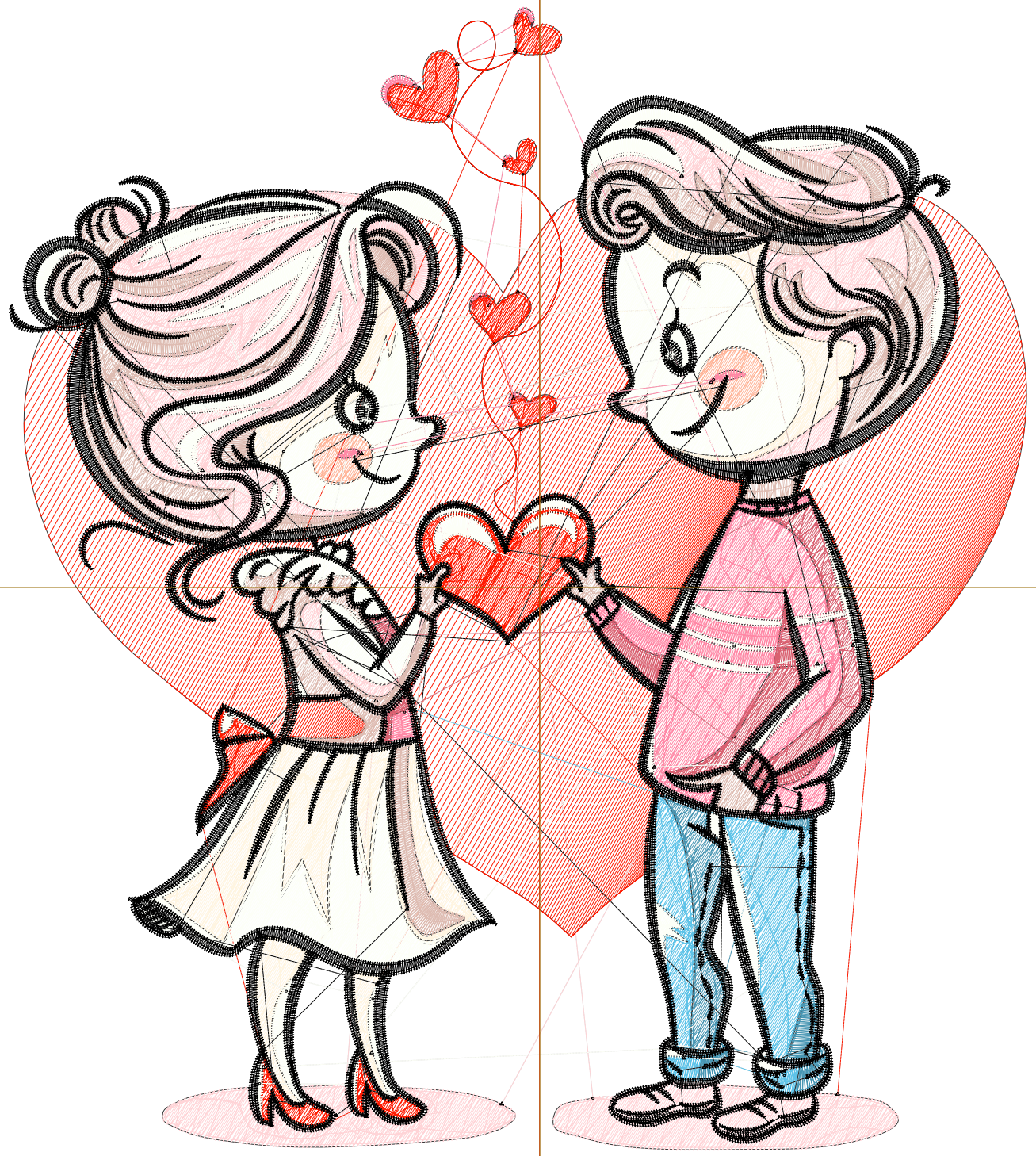
Wilcom EmbroideryStudio - Designing



Design: 7

Title:

Stitches: 58,971
Height: 7.51 in
Width: 6.68 in
Colors: 11
Colorway: Colorway 1
Zoom: 1:1



Production Worksheet

Wilcom EmbroideryStudio - Designing



Design: **7**

Title:

Stitches: 58,971
 Height: 7.51 in
 Width: 6.68 in
 Colors: 11
 Colorway: Colorway 1
 Zoom: 1:1

Machine format: Tajima
 Color changes: 19
 Stops: 20
 Trims: 199
 Appliqués: 0
 Left: 88.5 mm
 Right: 81.3 mm
 Up: 96.9 mm
 Down: 93.9 mm
 EndX: 0.00 in
 EndY: 0.00 in
 Area 50.21 in²
 Max stitch: 7.0 mm
 Min stitch: 0.0 mm
 Max jump: 7.0 mm
 Total thread: 896.04ft
 Total bobbin: 297.80ft

Stop Sequence:

#	N#	Color	St.	Code	Name	Chart
1.	2		802		R255 G212 B215	
2.	10		794		R255 G27 B2	
3.	2		2,140		R255 G212 B215	
4.	10		2,090		R255 G27 B2	
5.	2		3,579		R255 G212 B215	
6.	10		785		R255 G27 B2	
7.	2		1,412		R255 G212 B215	
8.	1		3,235		R255 G245 B225	
9.	3		347		R255 G182 B154	
10.	4		5,572		R222 G188 B178	
11.	5		2,184		R255 G136 B166	
12.	6		1,118		R217 G96 B112	
13.	7		1,130		R94 G195 B232	
14.	9		691		R72 G150 B179	
15.	10		2,309		R255 G27 B2	
16.	11		8,567		R253 G255 B247	
17.	8		21,843	8 Black		Default
18.	11		75		R253 G255 B247	
19.	5		108		R255 G136 B166	
20.	8		188	8 Black		Default