

Production Worksheet

Wilcom EmbroideryStudio - Designing



Design: **3**

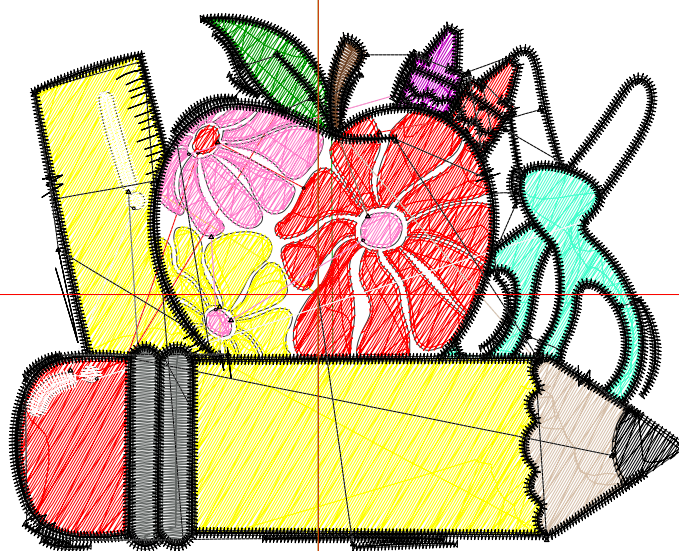
Title:

Stitches: 14,601
Height: 2.81 in
Width: 3.52 in
Colors: 11
Colorway: Colorway 1
Zoom: 1:1

Machine format: Tajima
Color changes: 10
Stops: 11
Trims: 63
Appliqués: 0
Left: 40.9 mm
Right: 48.4 mm
Up: 37.2 mm
Down: 34.1 mm
EndX: 0.00 in
EndY: 0.00 in
Area: 9.87 in²
Max stitch: 11.3 mm
Min stitch: 0.2 mm
Max jump: 7.0 mm
Total thread: 226.20ft
Total bobbin: 75.13ft

Stop Sequence:

#	N#	Color	St.	Code	Name	Chart
1.	4		2,805		R255 G255 B0	
2.	1		260		R0 G153 B0	
3.	3		2,113		R255 G0 B0	
4.	6		121		R192 G0 B192	
5.	15		897		R255 G126 B203	
6.	5		97		R112 G69 B39	
7.	14		391		R214 G192 B170	
8.	7		665		R72 G255 B206	
9.	9		229		R255 G255 B255	
10.	2		385		R98 G102 B100	
11.	8		6,636		R0 G0 B0	



Production Worksheet

Wilcom EmbroideryStudio - Designing



Design: **4**

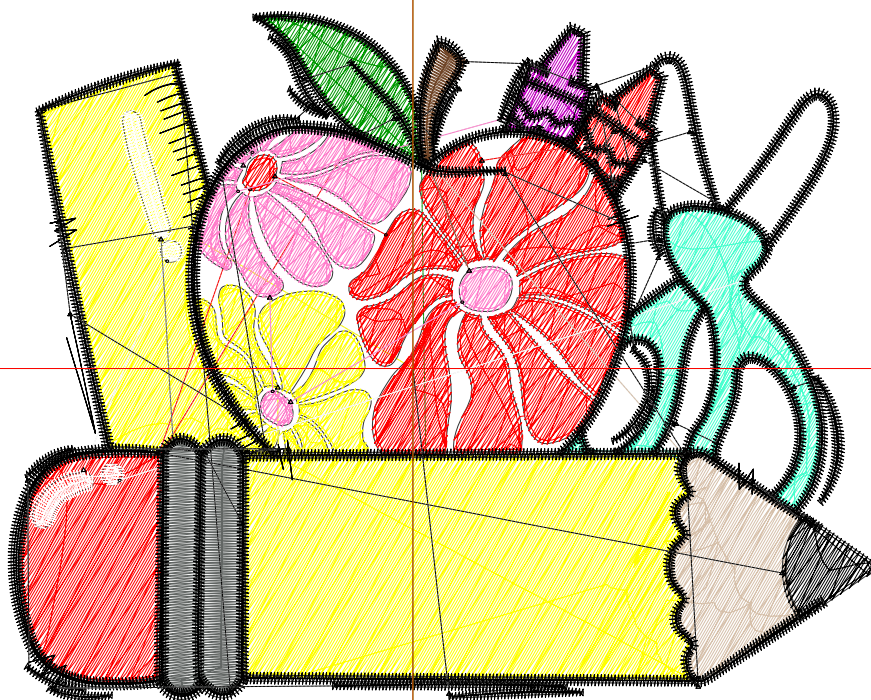
Title:

Stitches: 19,666
 Height: 3.60 in
 Width: 4.52 in
 Colors: 11
 Colorway: Colorway 1
 Zoom: 1:1

Machine format: Tajima
 Color changes: 10
 Stops: 11
 Trims: 65
 Appliqués: 0
 Left: 53.6 mm
 Right: 61.2 mm
 Up: 47.2 mm
 Down: 44.2 mm
 EndX: 0.00 in
 EndY: 0.00 in
 Area: 16.26 in²
 Max stitch: 7.0 mm
 Min stitch: 0.2 mm
 Max jump: 7.0 mm
 Total thread: 326.43ft
 Total bobbin: 114.83ft

Stop Sequence:

#	N#	Color	St.	Code	Name	Chart
1.	4		4,153	R255	G255 B0	
2.	1		357	R0	G153 B0	
3.	3		2,962	R255	G0 B0	
4.	6		181	R192	G0 B192	
5.	15		1,197	R255	G126 B203	
6.	5		123	R112	G69 B39	
7.	14		586	R214	G192 B170	
8.	7		910	R72	G255 B206	
9.	9		294	R255	G255 B255	
10.	2		518	R98	G102 B100	
11.	8		8,383	R0	G0 B0	



Production Worksheet

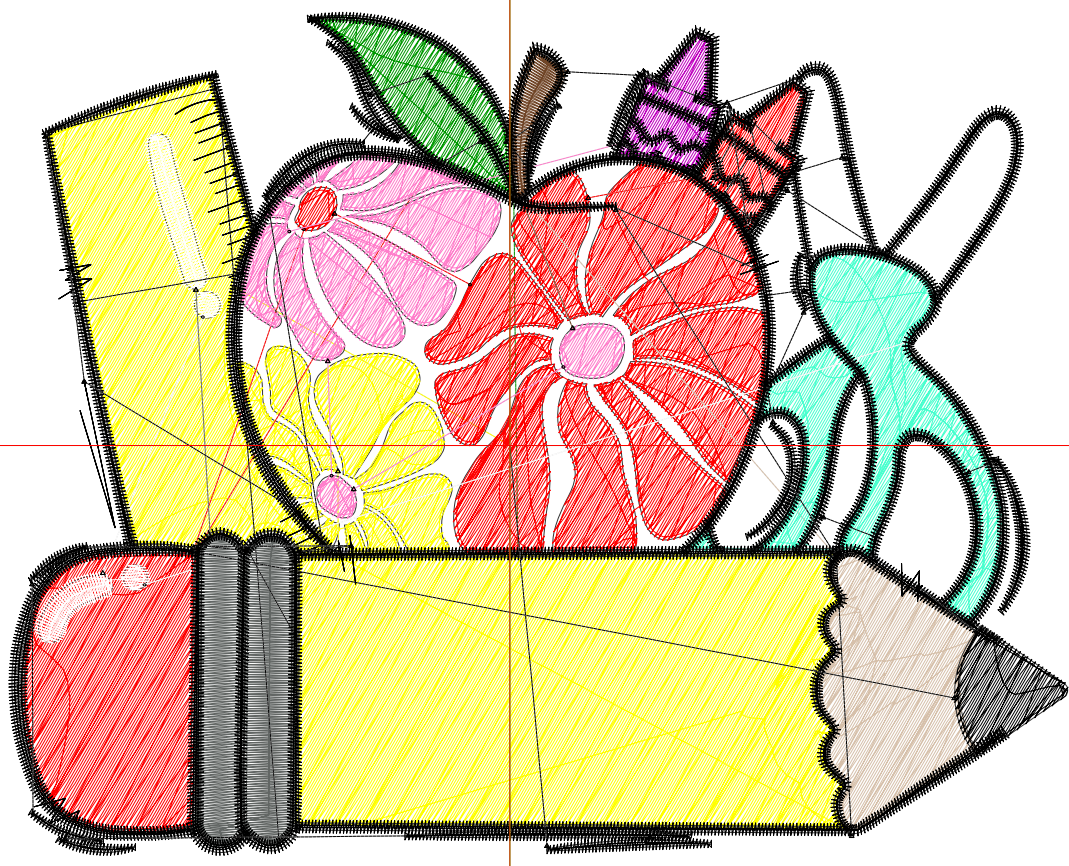
Wilcom EmbroideryStudio - Designing



Design: **5**

Title:

Stitches: 25,397
Height: 4.39 in
Width: 5.52 in
Colors: 11
Colorway: Colorway 1
Zoom: 1:1



Production Worksheet

Wilcom EmbroideryStudio - Designing



Design: **5**

Title:

Stitches: 25,397
 Height: 4.39 in
 Width: 5.52 in
 Colors: 11
 Colorway: Colorway 1
 Zoom: 1:1

Machine format: Tajima
 Color changes: 10
 Stops: 11
 Trims: 66
 Appliqués: 0
 Left: 66.3 mm
 Right: 73.8 mm
 Up: 57.3 mm
 Down: 54.2 mm
 EndX: 0.00 in
 EndY: 0.00 in
 Area 24.22 in²
 Max stitch: 7.4 mm
 Min stitch: 0.3 mm
 Max jump: 7.0 mm
 Total thread: 444.82ft
 Total bobbin: 162.70ft

Stop Sequence:

#	N#	Color	St.	Code	Name	Chart
1.	4		5,762		R255 G255 B0	
2.	1		485		R0 G153 B0	
3.	3		4,002		R255 G0 B0	
4.	6		236		R192 G0 B192	
5.	15		1,520		R255 G126 B203	
6.	5		152		R112 G69 B39	
7.	14		795		R214 G192 B170	
8.	7		1,219		R72 G255 B206	
9.	9		367		R255 G255 B255	
10.	2		645		R98 G102 B100	
11.	8		10,212		R0 G0 B0	

Production Worksheet

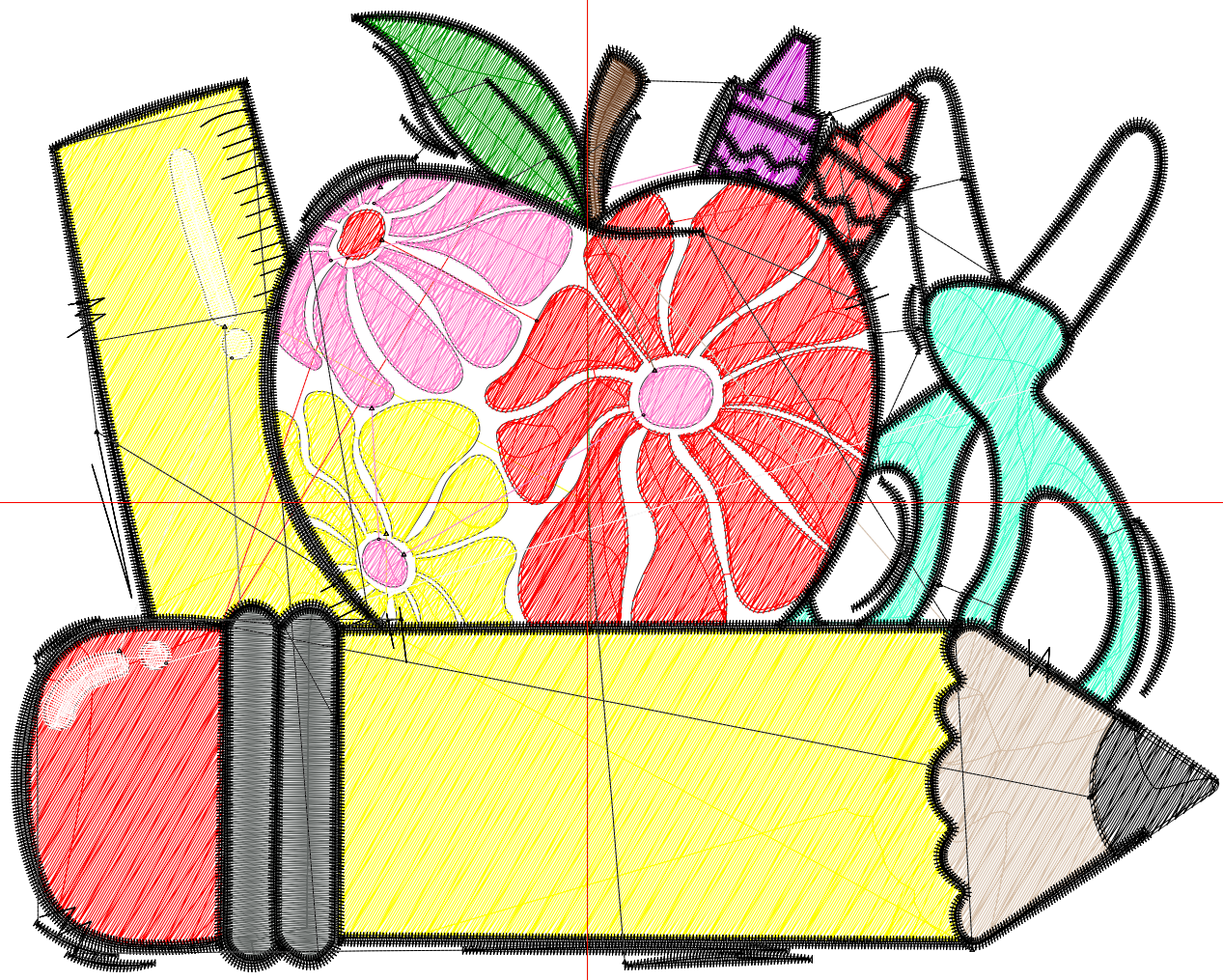
Wilcom EmbroideryStudio - Designing



Design: **6**

Title:

Stitches: 31,523
Height: 5.18 in
Width: 6.52 in
Colors: 11
Colorway: Colorway 1
Zoom: 1:1



1

1

2

2

Production Worksheet

Wilcom EmbroideryStudio - Designing



Design: **6**

Title:

Stitches: 31,523
 Height: 5.18 in
 Width: 6.52 in
 Colors: 11
 Colorway: Colorway 1
 Zoom: 1:1

Machine format: Tajima
 Color changes: 10
 Stops: 11
 Trims: 69
 Appliqués: 0
 Left: 79.0 mm
 Right: 86.6 mm
 Up: 67.4 mm
 Down: 64.3 mm
 EndX: 0.00 in
 EndY: 0.00 in
 Area 33.79 in²
 Max stitch: 8.6 mm
 Min stitch: 0.0 mm
 Max jump: 7.0 mm
 Total thread: 578.80ft
 Total bobbin: 218.28ft

Stop Sequence:

#	N#	Color	St.	Code	Name	Chart
1.	4		7,594		R255 G255 B0	
2.	1		622		R0 G153 B0	
3.	3		5,187		R255 G0 B0	
4.	6		298		R192 G0 B192	
5.	15		1,905		R255 G126 B203	
6.	5		179		R112 G69 B39	
7.	14		1,036		R214 G192 B170	
8.	7		1,515		R72 G255 B206	
9.	9		428		R255 G255 B255	
10.	2		776		R98 G102 B100	
11.	8		11,981		R0 G0 B0	

Production Worksheet

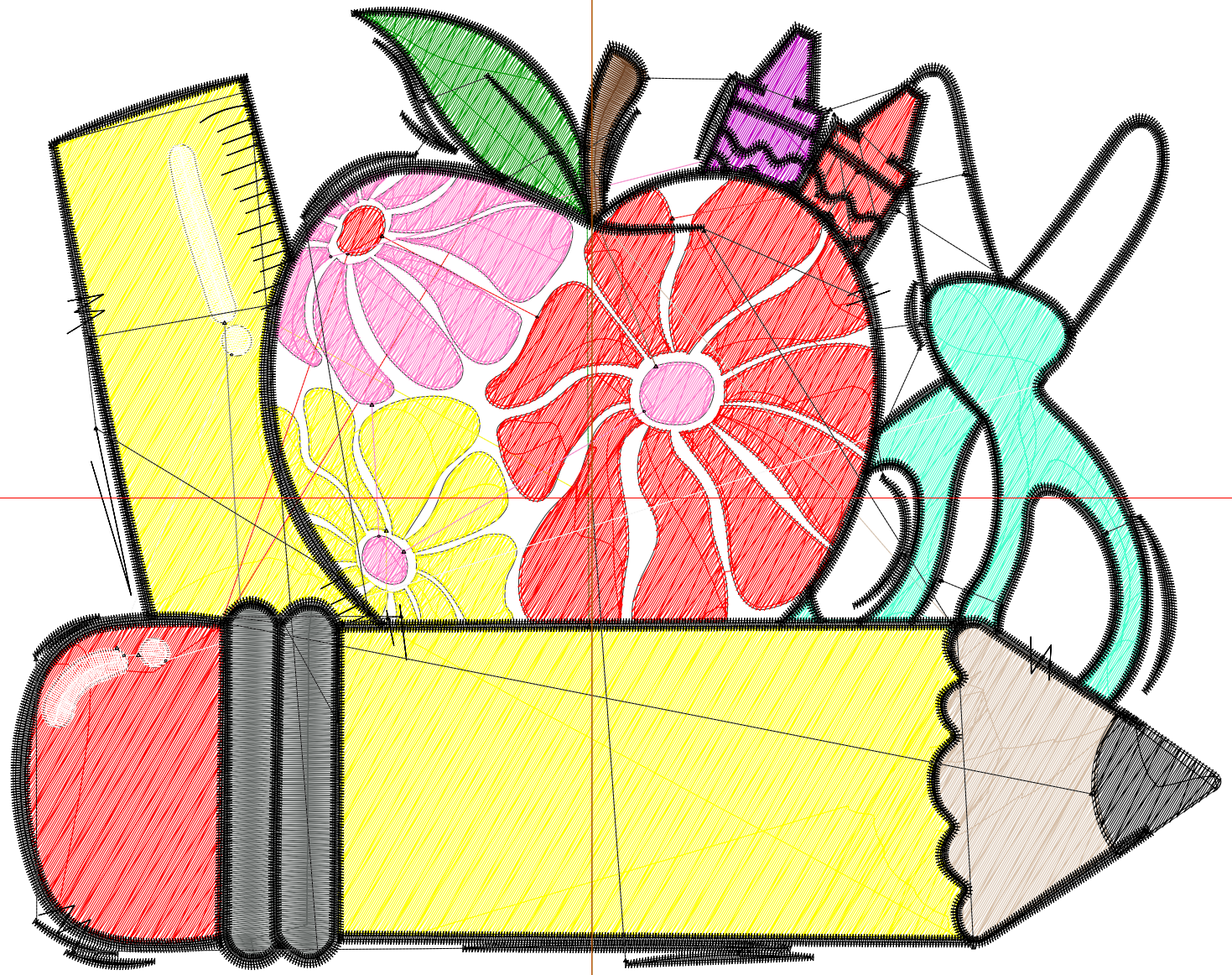
Wilcom EmbroideryStudio - Designing



Design: 7

Title:

Stitches: 38,228
Height: 5.98 in
Width: 7.52 in
Colors: 11
Colorway: Colorway 1
Zoom: 1:1



Production Worksheet

Wilcom EmbroideryStudio - Designing



Design: **7**

Title:

Stitches: 38,228
 Height: 5.98 in
 Width: 7.52 in
 Colors: 11
 Colorway: Colorway 1
 Zoom: 1:1

Machine format: Tajima
 Color changes: 10
 Stops: 11
 Trims: 70
 Appliqués: 0
 Left: 91.7 mm
 Right: 99.2 mm
 Up: 77.4 mm
 Down: 74.4 mm
 EndX: 0.00 in
 EndY: 0.00 in
 Area 44.92 in²
 Max stitch: 9.8 mm
 Min stitch: 0.0 mm
 Max jump: 7.0 mm
 Total thread: 730.55ft
 Total bobbin: 282.13ft

Stop Sequence:

#	N#	Color	St.	Code	Name	Chart
1.	4		9,699		R255 G255 B0	
2.	1		776		R0 G153 B0	
3.	3		6,517		R255 G0 B0	
4.	6		380		R192 G0 B192	
5.	15		2,280		R255 G126 B203	
6.	5		210		R112 G69 B39	
7.	14		1,323		R214 G192 B170	
8.	7		1,842		R72 G255 B206	
9.	9		501		R255 G255 B255	
10.	2		893		R98 G102 B100	
11.	8		13,805		R0 G0 B0	