

Production Worksheet

Wilcom EmbroideryStudio - Designing



Design: **2**

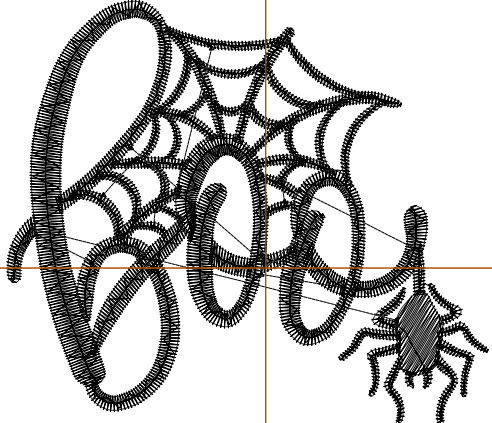
Title:

Stitches: 4,629
 Height: 56.3 mm
 Width: 63.7 mm
 Colors: 1
 Colorway: Colorway 1
 Zoom: 1:1

Machine format: Tajima
 Color changes: 0
 Stops: 1
 Trims: 15
 Appliqués: 0
 Left: 34.3 mm
 Right: 29.4 mm
 Up: 35.4 mm
 Down: 20.9 mm
 EndX: 0.0 mm
 EndY: 0.0 mm
 Area: 3588.2 mm²
 Max stitch: 6.9 mm
 Min stitch: 0.0 mm
 Max jump: 6.9 mm
 Total thread: 20.97m
 Total bobbin: 6.88m

Stop Sequence:

#	N#	Color	St.	Code	Name	Chart
1.	8	█	4,627	8	Black	Default



Production Worksheet

Wilcom EmbroideryStudio - Designing



Design: **3**

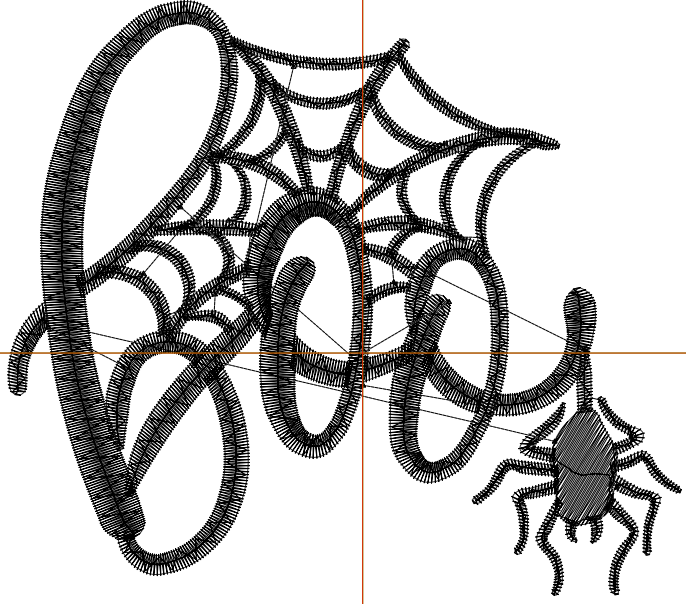
Title:

Stitches: 6,642
 Height: 78.7 mm
 Width: 89.1 mm
 Colors: 1
 Colorway: Colorway 1
 Zoom: 1:1

Machine format: Tajima
 Color changes: 0
 Stops: 1
 Trims: 25
 Appliqués: 0
 Left: 47.0 mm
 Right: 42.1 mm
 Up: 46.7 mm
 Down: 32.1 mm
 EndX: 0.0 mm
 EndY: 0.0 mm
 Area: 7017.8 mm²
 Max stitch: 6.7 mm
 Min stitch: 0.0 mm
 Max jump: 6.7 mm
 Total thread: 34.91m
 Total bobbin: 12.76m

Stop Sequence:

#	N#	Color	St.	Code	Name	Chart
1.	8	█	6,640	8	Black	Default



Production Worksheet

Wilcom EmbroideryStudio - Designing



Design: **4**

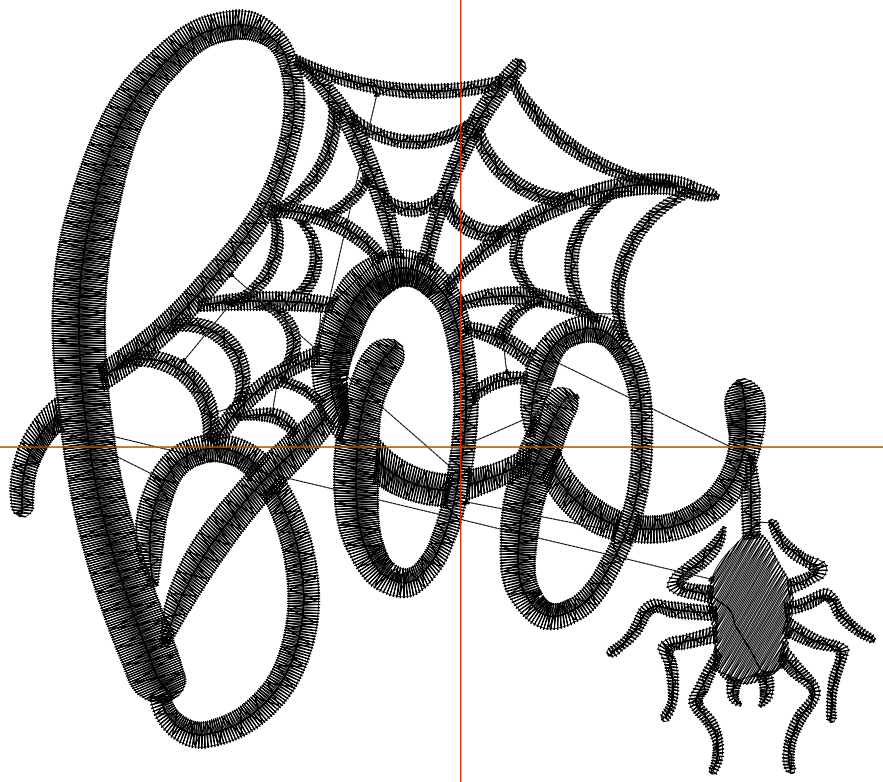
Title:

Stitches: 8,750
 Height: 101.2 mm
 Width: 114.5 mm
 Colors: 1
 Colorway: Colorway 1
 Zoom: 1:1

Machine format: Tajima
 Color changes: 0
 Stops: 1
 Trims: 32
 Appliqués: 0
 Left: 59.7 mm
 Right: 54.8 mm
 Up: 57.9 mm
 Down: 43.3 mm
 EndX: 0.0 mm
 EndY: 0.0 mm
 Area: 11584.5 mm²
 Max stitch: 7.3 mm
 Min stitch: 0.0 mm
 Max jump: 6.9 mm
 Total thread: 52.53m
 Total bobbin: 20.70m

Stop Sequence:

#	N#	Color	St.	Code	Name	Chart
1.	8	█	8,748	8	Black	Default



Production Worksheet

Wilcom EmbroideryStudio - Designing



Design: **5**

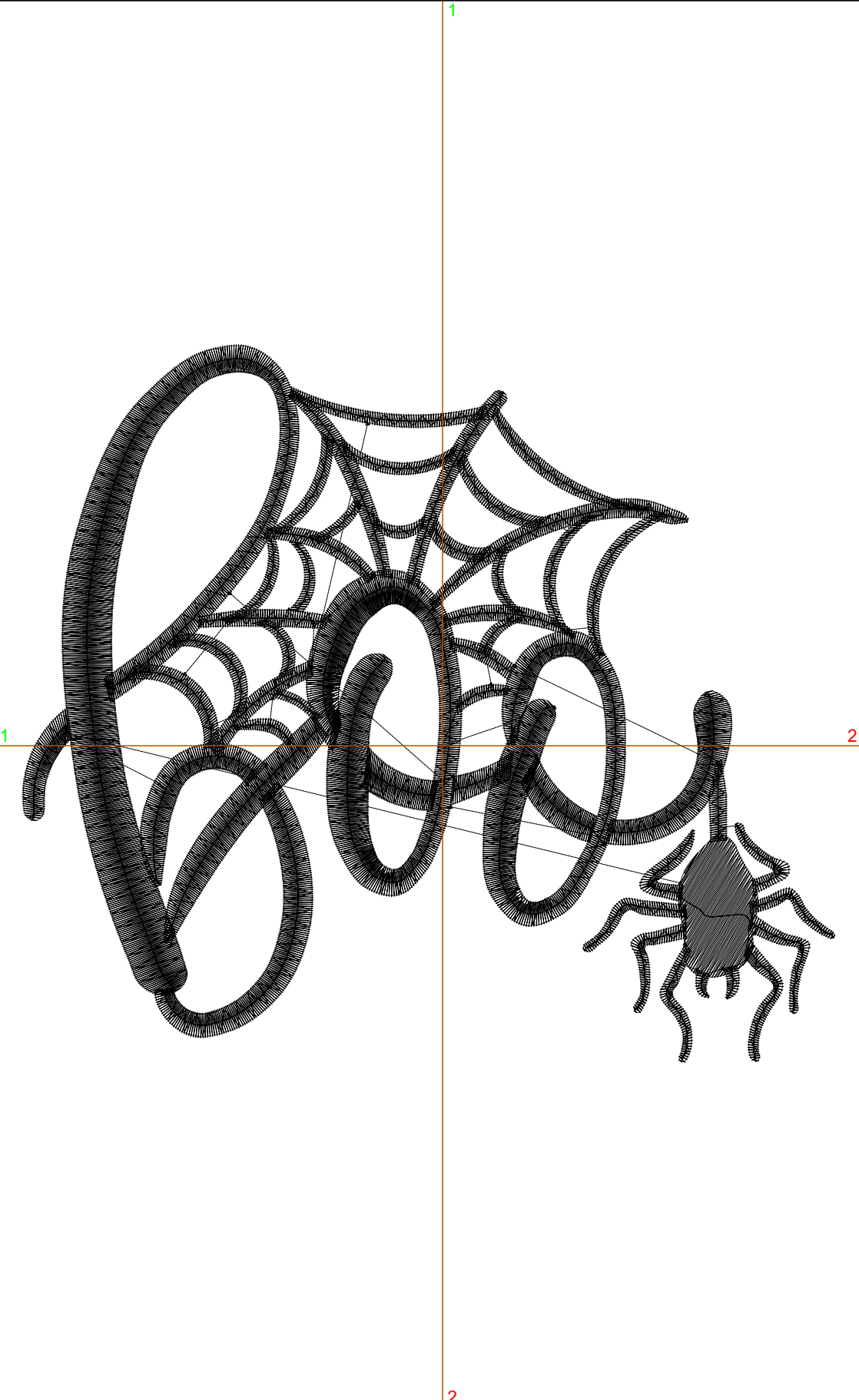
Title:

Stitches: 10,996
 Height: 123.6 mm
 Width: 139.9 mm
 Colors: 1
 Colorway: Colorway 1
 Zoom: 1:1

Machine format: Tajima
 Color changes: 0
 Stops: 1
 Trims: 35
 Appliqués: 0
 Left: 72.4 mm
 Right: 67.5 mm
 Up: 69.1 mm
 Down: 54.5 mm
 EndX: 0.0 mm
 EndY: 0.0 mm
 Area: 17295.9 mm²
 Max stitch: 8.8 mm
 Min stitch: 0.1 mm
 Max jump: 7.0 mm
 Total thread: 73.90m
 Total bobbin: 30.70m

Stop Sequence:

#	N#	Color	St.	Code	Name	Chart
1.	8	█	10,994	8	Black	Default



Production Worksheet

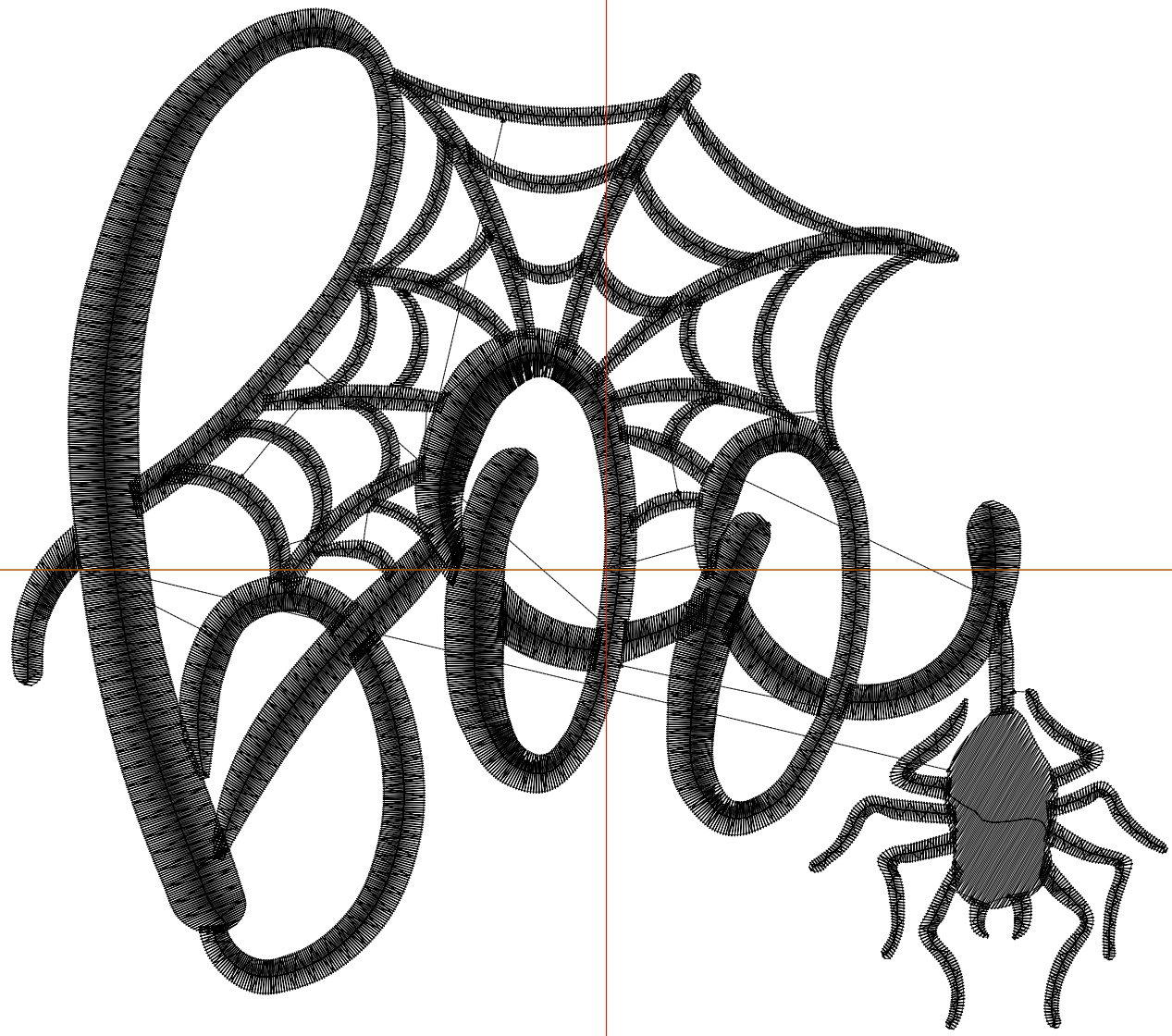
Wilcom EmbroideryStudio - Designing



Design: **6**

Title:

Stitches: 13,456
Height: 146.1 mm
Width: 165.3 mm
Colors: 1
Colorway: Colorway 1
Zoom: 1:1



Production Worksheet

Wilcom EmbroideryStudio - Designing



Design: **6**

Title:

Stitches: 13,456
Height: 146.1 mm
Width: 165.3 mm
Colors: 1
Colorway: Colorway 1
Zoom: 1:1

Machine format: Tajima
Color changes: 0
Stops: 1
Trims: 41
Appliqués: 0
Left: 85.1 mm
Right: 80.2 mm
Up: 80.3 mm
Down: 65.8 mm
EndX: 0.0 mm
EndY: 0.0 mm
Area 24153.4 mm²
Max stitch: 10.3 mm
Min stitch: 0.1 mm
Max jump: 6.9 mm
Total thread: 99.41m
Total bobbin: 42.90m

Stop Sequence:

#	N#	Color	St.	Code	Name	Chart
1.	8		13,454	8	Black	Default

Production Worksheet

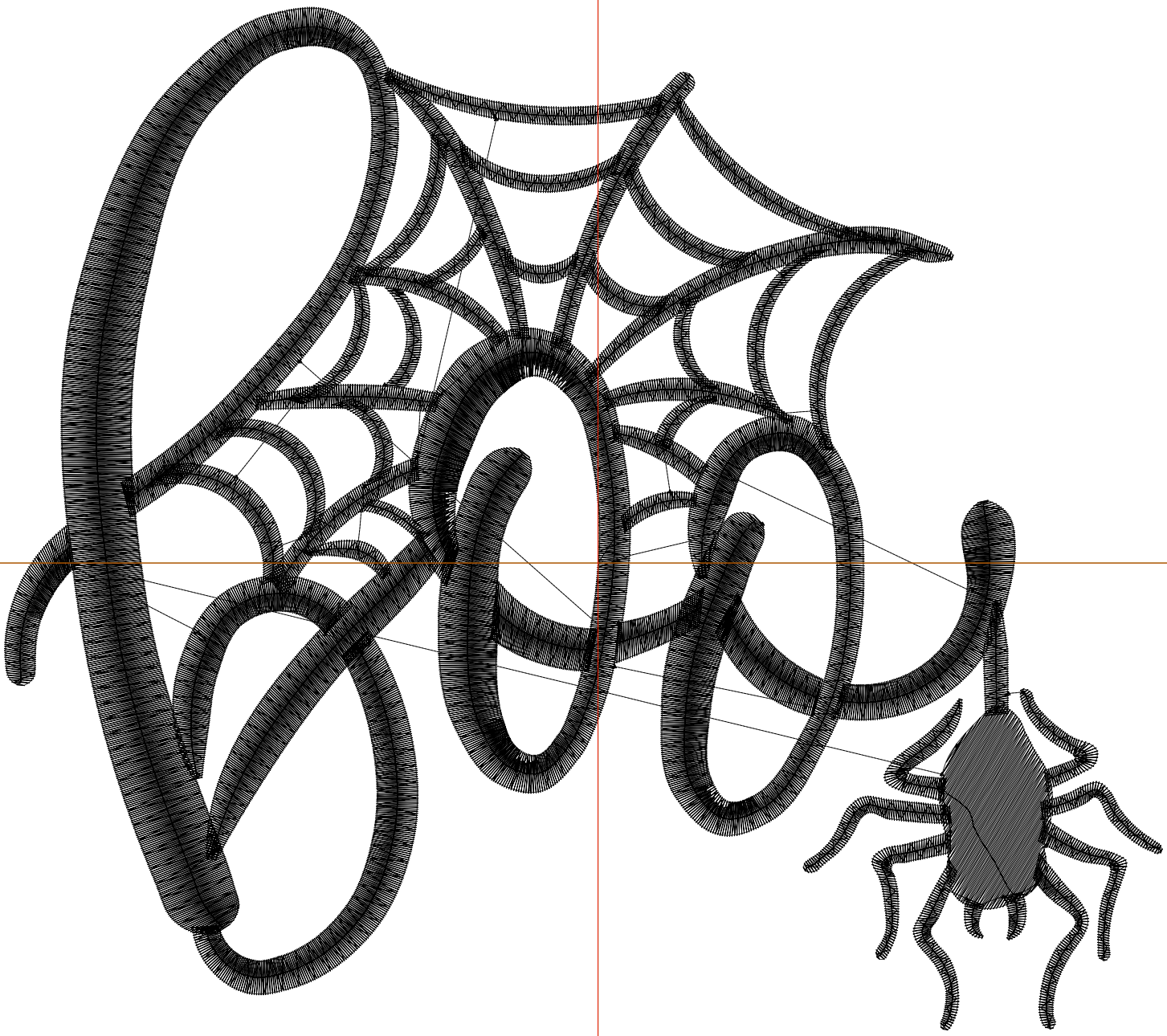
Wilcom EmbroideryStudio - Designing



Design: **7**

Title:

Stitches: 16,008
Height: 168.5 mm
Width: 190.7 mm
Colors: 1
Colorway: Colorway 1
Zoom: 1:1



Production Worksheet

Wilcom EmbroideryStudio - Designing



Design: **7**

Title:

Stitches: 16,008
 Height: 168.5 mm
 Width: 190.7 mm
 Colors: 1
 Colorway: Colorway 1
 Zoom: 1:1

Machine format: Tajima
 Color changes: 0
 Stops: 1
 Trims: 42
 Appliqués: 0
 Left: 97.8 mm
 Right: 92.9 mm
 Up: 91.5 mm
 Down: 77.0 mm
 EndX: 0.0 mm
 EndY: 0.0 mm
 Area: 32145.0 mm²
 Max stitch: 11.9 mm
 Min stitch: 0.0 mm
 Max jump: 6.8 mm
 Total thread: 128.61m
 Total bobbin: 57.18m

Stop Sequence:

#	N#	Color	St.	Code	Name	Chart
1.	8	█	16,006	8	Black	Default