

# Production Worksheet

Wilcom EmbroideryStudio - Designing



Design: **3**

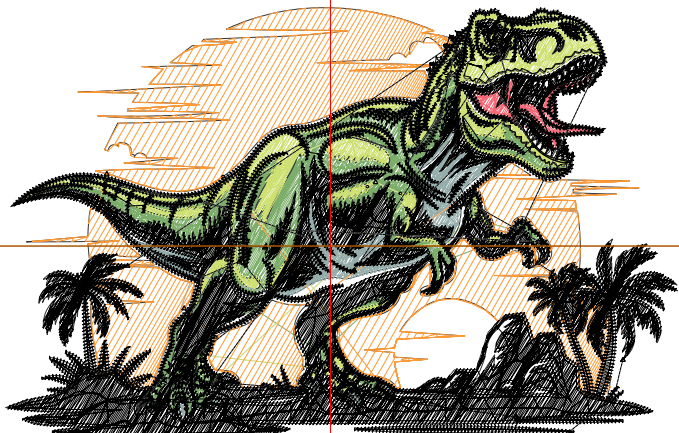
Title:

Stitches: 28,063  
 Height: 2.24 in  
 Width: 3.50 in  
 Colors: 6  
 Colorway: Colorway 1  
 Zoom: 1:1

Machine format: Tajima  
 Color changes: 5  
 Stops: 6  
 Trims: 85  
 Appliqués: 0  
 Left: 42.9 mm  
 Right: 45.9 mm  
 Up: 31.5 mm  
 Down: 25.4 mm  
 EndX: 0.00 in  
 EndY: 0.00 in  
 Area: 7.84 in<sup>2</sup>  
 Max stitch: 9.7 mm  
 Min stitch: 0.0 mm  
 Max jump: 6.9 mm  
 Total thread: 331.87ft  
 Total bobbin: 86.37ft

Stop Sequence:

#	N#	Color	St.	Code	Name	Chart
1.	3		3,943		R124 G173 B106	
2.	4		3,064		R206 G224 B113	
3.	2		360		R247 G102 B117	
4.	6		1,348		R149 G173 B171	
5.	12		1,949	12	Orange	Default
6.	8		17,397	8	Black	Default



# Production Worksheet

Wilcom EmbroideryStudio - Designing



Design: **4**

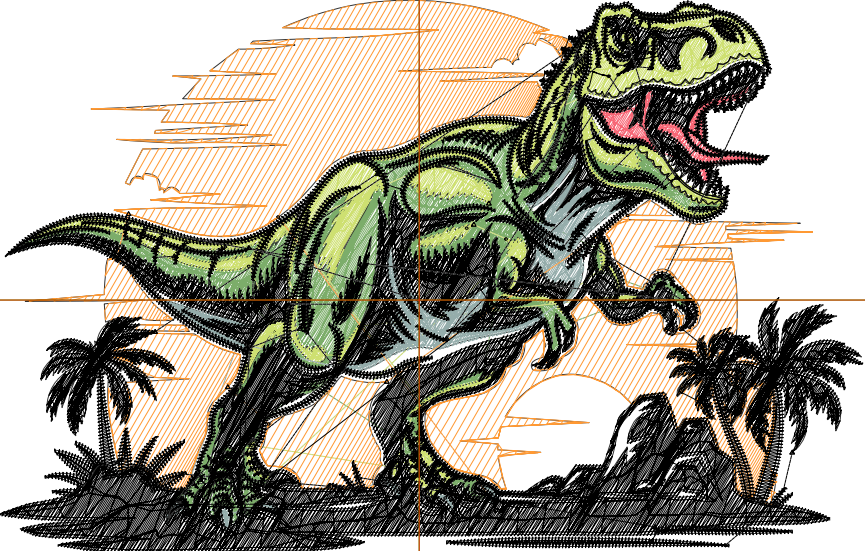
Title:

Stitches: 36,663  
 Height: 2.88 in  
 Width: 4.50 in  
 Colors: 6  
 Colorway: Colorway 1  
 Zoom: 1:1

Machine format: Tajima  
 Color changes: 5  
 Stops: 6  
 Trims: 92  
 Appliqués: 0  
 Left: 55.6 mm  
 Right: 58.7 mm  
 Up: 39.6 mm  
 Down: 33.6 mm  
 EndX: 0.00 in  
 EndY: 0.00 in  
 Area: 12.97 in<sup>2</sup>  
 Max stitch: 11.7 mm  
 Min stitch: 0.0 mm  
 Max jump: 7.0 mm  
 Total thread: 457.39ft  
 Total bobbin: 127.32ft

Stop Sequence:

#	N#	Color	St.	Code	Name	Chart
1.	3		5,172		R124 G173 B106	
2.	4		4,144		R206 G224 B113	
3.	2		472		R247 G102 B117	
4.	6		1,745		R149 G173 B171	
5.	12		2,594	12	Orange	Default
6.	8		22,534	8	Black	Default



# Production Worksheet

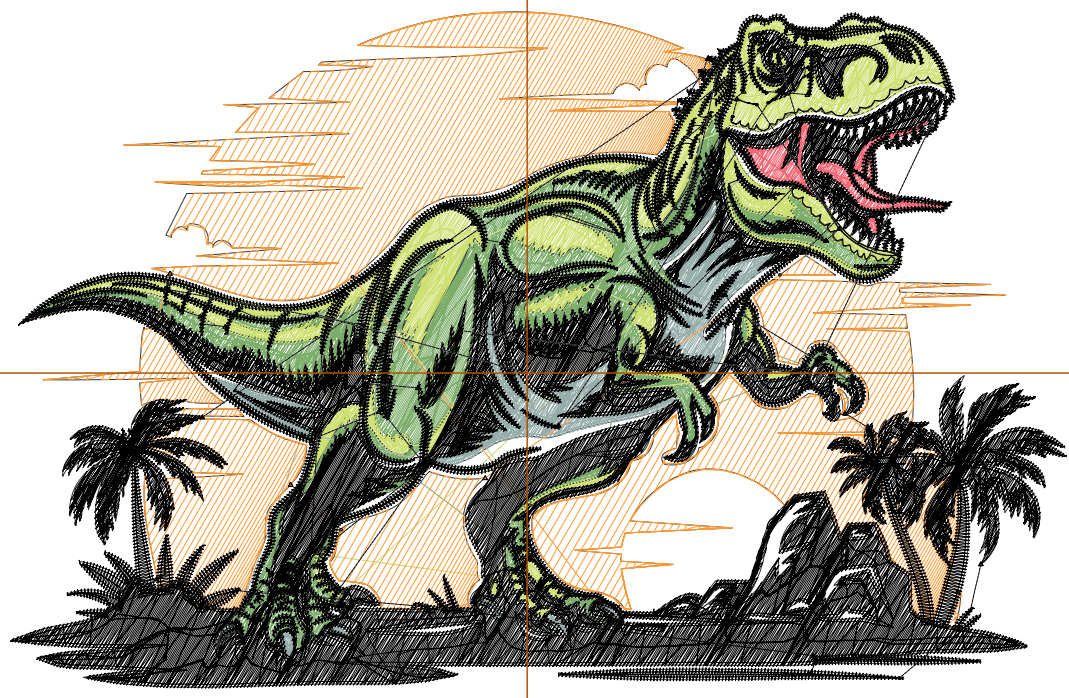
Wilcom EmbroideryStudio - Designing



Design: **5**

Title:

Stitches: 45,799  
Height: 3.52 in  
Width: 5.50 in  
Colors: 6  
Colorway: Colorway 1  
Zoom: 1:1



# Production Worksheet

Wilcom EmbroideryStudio - Designing



Design: **5**

Title:

Stitches: 45,799  
 Height: 3.52 in  
 Width: 5.50 in  
 Colors: 6  
 Colorway: Colorway 1  
 Zoom: 1:1

Machine format: Tajima  
 Color changes: 5  
 Stops: 6  
 Trims: 101  
 Appliqués: 0  
 Left: 68.4 mm  
 Right: 71.3 mm  
 Up: 47.7 mm  
 Down: 41.7 mm  
 EndX: 0.00 in  
 EndY: 0.00 in  
 Area 19.36 in<sup>2</sup>  
 Max stitch: 11.4 mm  
 Min stitch: 0.0 mm  
 Max jump: 7.0 mm  
 Total thread: 598.80ft  
 Total bobbin: 175.59ft

Stop Sequence:

#	N#	Color	St.	Code	Name	Chart
1.	3		6,504		R124 G173 B106	
2.	4		5,307		R206 G224 B113	
3.	2		586		R247 G102 B117	
4.	6		2,167		R149 G173 B171	
5.	12		3,419	12	Orange	Default
6.	8		27,814	8	Black	Default

# Production Worksheet

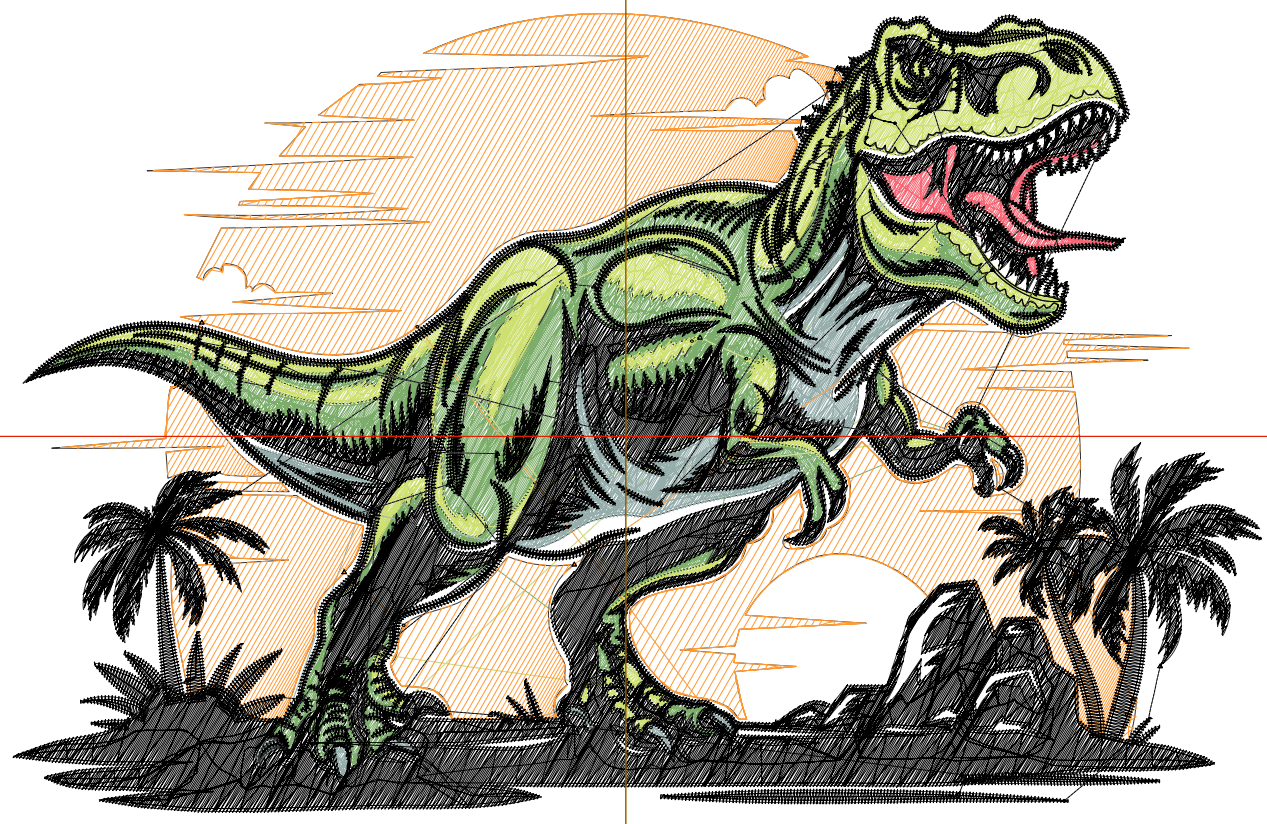
Wilcom EmbroideryStudio - Designing



Design: **6**

Title:

Stitches: 54,940  
Height: 4.16 in  
Width: 6.50 in  
Colors: 6  
Colorway: Colorway 1  
Zoom: 1:1



# Production Worksheet

Wilcom EmbroideryStudio - Designing



Design: **6**

Title:

Stitches: 54,940  
 Height: 4.16 in  
 Width: 6.50 in  
 Colors: 6  
 Colorway: Colorway 1  
 Zoom: 1:1

Machine format: Tajima  
 Color changes: 5  
 Stops: 6  
 Trims: 110  
 Appliqués: 0  
 Left: 81.1 mm  
 Right: 84.1 mm  
 Up: 55.9 mm  
 Down: 49.8 mm  
 EndX: 0.00 in  
 EndY: 0.00 in  
 Area 27.07 in<sup>2</sup>  
 Max stitch: 11.1 mm  
 Min stitch: 0.0 mm  
 Max jump: 7.0 mm  
 Total thread: 748.73ft  
 Total bobbin: 228.89ft

Stop Sequence:

#	N#	Color	St.	Code	Name	Chart
1.	3		7,907		R124 G173 B106	
2.	4		6,316		R206 G224 B113	
3.	2		703		R247 G102 B117	
4.	6		2,583		R149 G173 B171	
5.	12		4,267	12	Orange	Default
6.	8		33,162	8	Black	Default

# Production Worksheet

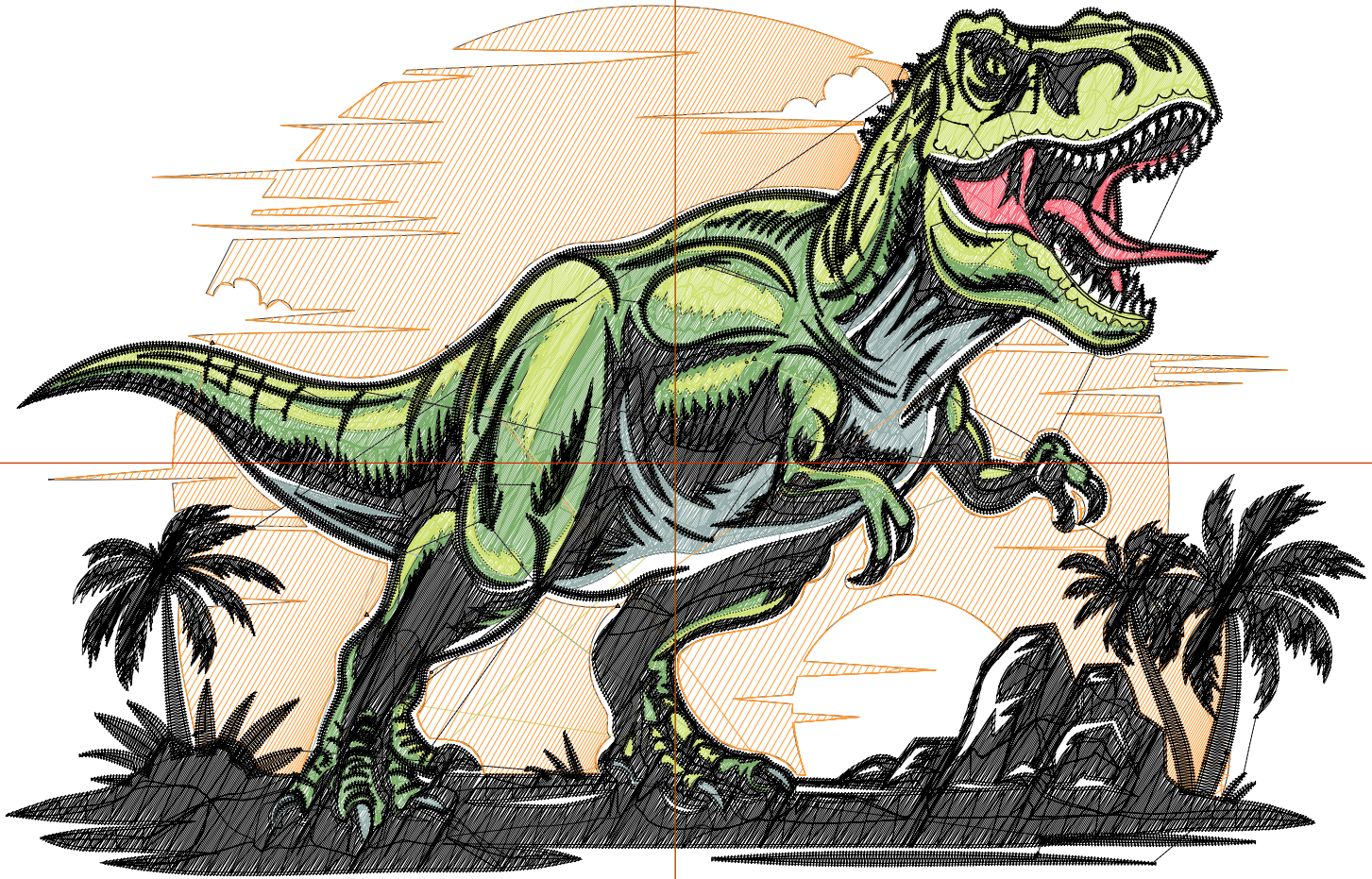
Wilcom EmbroideryStudio - Designing



Design: 7

Title:

Stitches: 64,464  
Height: 4.80 in  
Width: 7.50 in  
Colors: 6  
Colorway: Colorway 1  
Zoom: 1:1



# Production Worksheet

Wilcom EmbroideryStudio - Designing



Design: **7**

Title:

Stitches: 64,464  
 Height: 4.80 in  
 Width: 7.50 in  
 Colors: 6  
 Colorway: Colorway 1  
 Zoom: 1:1

Machine format: Tajima  
 Color changes: 5  
 Stops: 6  
 Trims: 116  
 Appliqués: 0  
 Left: 93.8 mm  
 Right: 96.8 mm  
 Up: 64.0 mm  
 Down: 57.9 mm  
 EndX: 0.00 in  
 EndY: 0.00 in  
 Area 36.02 in<sup>2</sup>  
 Max stitch: 11.1 mm  
 Min stitch: 0.0 mm  
 Max jump: 7.0 mm  
 Total thread: 913.03ft  
 Total bobbin: 289.23ft

Stop Sequence:

#	N#	Color	St.	Code	Name	Chart
1.	3		9,295		R124 G173 B106	
2.	4		7,441		R206 G224 B113	
3.	2		820		R247 G102 B117	
4.	6		3,085		R149 G173 B171	
5.	12		5,156	12	Orange	Default
6.	8		38,665	8	Black	Default