

Production Worksheet

Wilcom EmbroideryStudio - Designing



Design: **3**

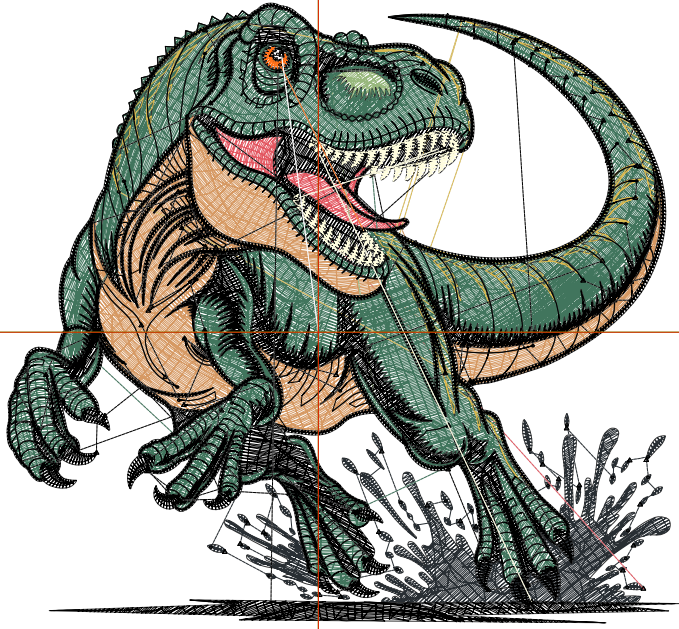
Title:

Stitches: 34,548
 Height: 3.23 in
 Width: 3.48 in
 Colors: 10
 Colorway: Colorway 1
 Zoom: 1:1

Machine format: Tajima
 Color changes: 9
 Stops: 10
 Trims: 199
 Appliqués: 0
 Left: 41.2 mm
 Right: 47.2 mm
 Up: 43.5 mm
 Down: 38.4 mm
 EndX: 0.00 in
 EndY: 0.00 in
 Area: 11.23 in²
 Max stitch: 7.1 mm
 Min stitch: 0.0 mm
 Max jump: 6.9 mm
 Total thread: 419.57ft
 Total bobbin: 112.36ft

Stop Sequence:

#	N#	Color	St.	Code	Name	Chart
1.	7		2,744		R40 G46 B51	
2.	5		394		R227 G87 B97	
3.	10		2,264		R214 G153 B99	
4.	4		219		R152 G184 B125	
5.	1		11,044		R65 G117 B93	
6.	11		714		R217 G185 B80	
7.	8		16,242	8	Black	Default
8.	2		834		R255 G253 B222	
9.	3		65		R255 G112 B24	
10.	9		26	9	White	Default



Production Worksheet

Wilcom EmbroideryStudio - Designing



Design: **4**

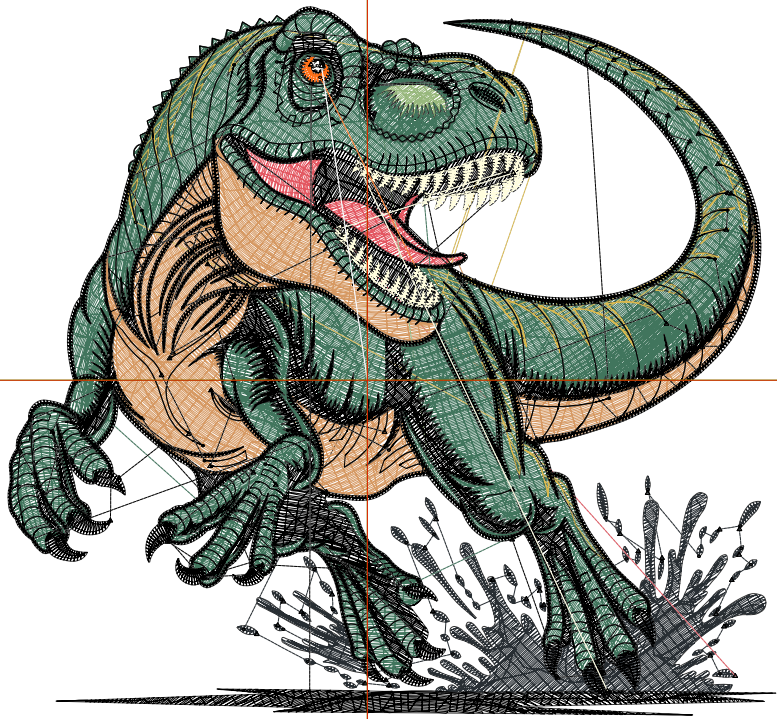
Title:

Stitches: 40,558
 Height: 3.69 in
 Width: 3.99 in
 Colors: 10
 Colorway: Colorway 1
 Zoom: 1:1

Machine format: Tajima
 Color changes: 9
 Stops: 10
 Trims: 214
 Appliqués: 0
 Left: 47.5 mm
 Right: 53.8 mm
 Up: 49.4 mm
 Down: 44.3 mm
 EndX: 0.00 in
 EndY: 0.00 in
 Area: 14.72 in²
 Max stitch: 8.4 mm
 Min stitch: 0.0 mm
 Max jump: 6.9 mm
 Total thread: 506.74ft
 Total bobbin: 140.64ft

Stop Sequence:

#	N#	Color	St.	Code	Name	Chart
1.	7		3,256		R40 G46 B51	
2.	5		472		R227 G87 B97	
3.	10		2,735		R214 G153 B99	
4.	4		240		R152 G184 B125	
5.	1		13,377		R65 G117 B93	
6.	11		828		R217 G185 B80	
7.	8		18,621	8	Black	Default
8.	2		926		R255 G253 B222	
9.	3		72		R255 G112 B24	
10.	9		29	9	White	Default



Production Worksheet

Wilcom EmbroideryStudio - Designing



Design: **4**

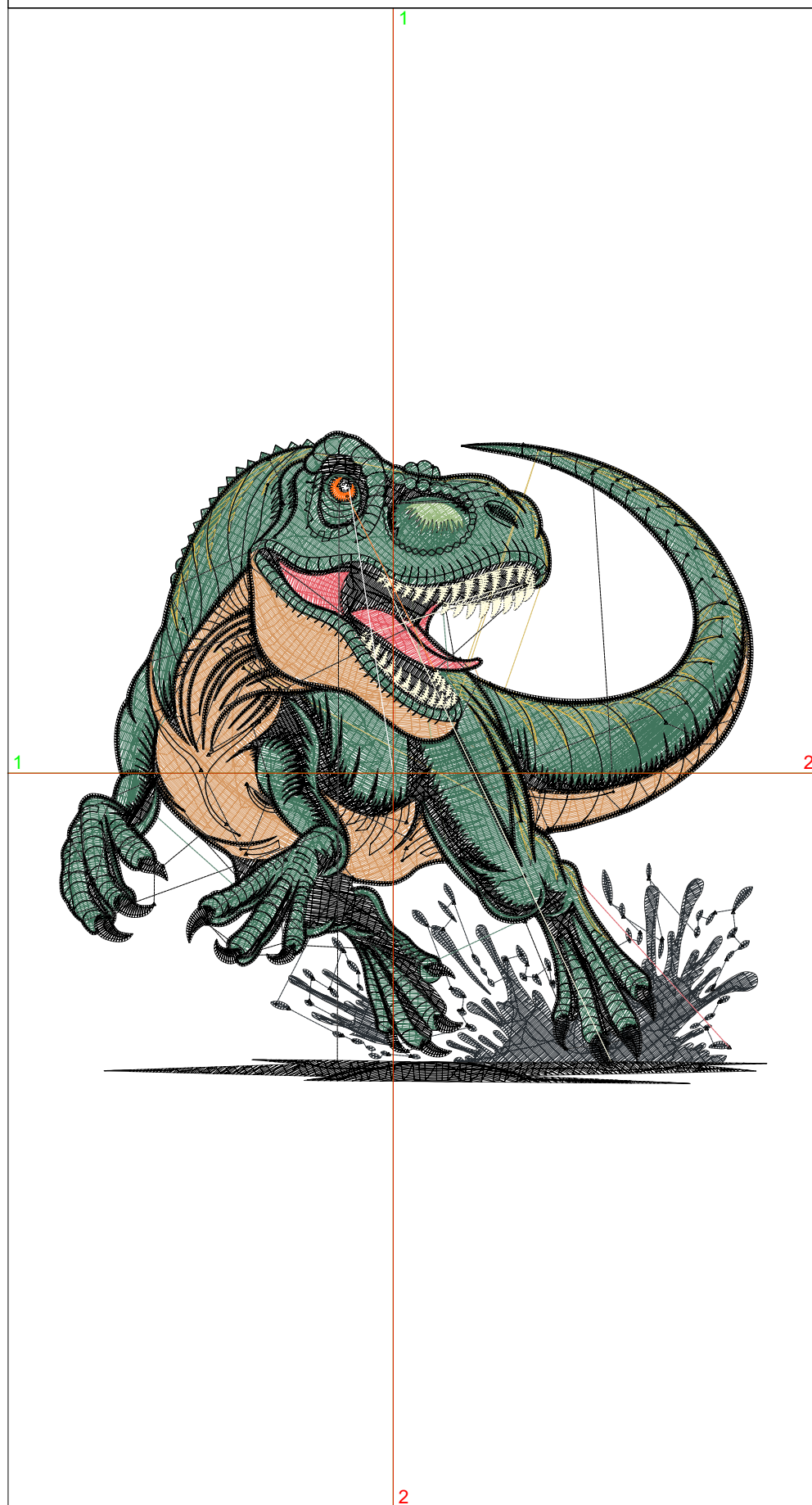
Title:

Stitches: 47,045
 Height: 4.15 in
 Width: 4.50 in
 Colors: 10
 Colorway: Colorway 1
 Zoom: 1:1

Machine format: Tajima
 Color changes: 9
 Stops: 10
 Trims: 234
 Appliqués: 0
 Left: 53.9 mm
 Right: 60.4 mm
 Up: 55.3 mm
 Down: 50.1 mm
 EndX: 0.00 in
 EndY: 0.00 in
 Area: 18.66 in²
 Max stitch: 8.8 mm
 Min stitch: 0.0 mm
 Max jump: 7.0 mm
 Total thread: 602.62ft
 Total bobbin: 172.24ft

Stop Sequence:

#	N#	Color	St.	Code	Name	Chart
1.	7		3,740		R40 G46 B51	
2.	5		554		R227 G87 B97	
3.	10		3,322		R214 G153 B99	
4.	4		279		R152 G184 B125	
5.	1		15,931		R65 G117 B93	
6.	11		915		R217 G185 B80	
7.	8		21,150	8	Black	Default
8.	2		1,036		R255 G253 B222	
9.	3		82		R255 G112 B24	
10.	9		34	9	White	Default



Production Worksheet

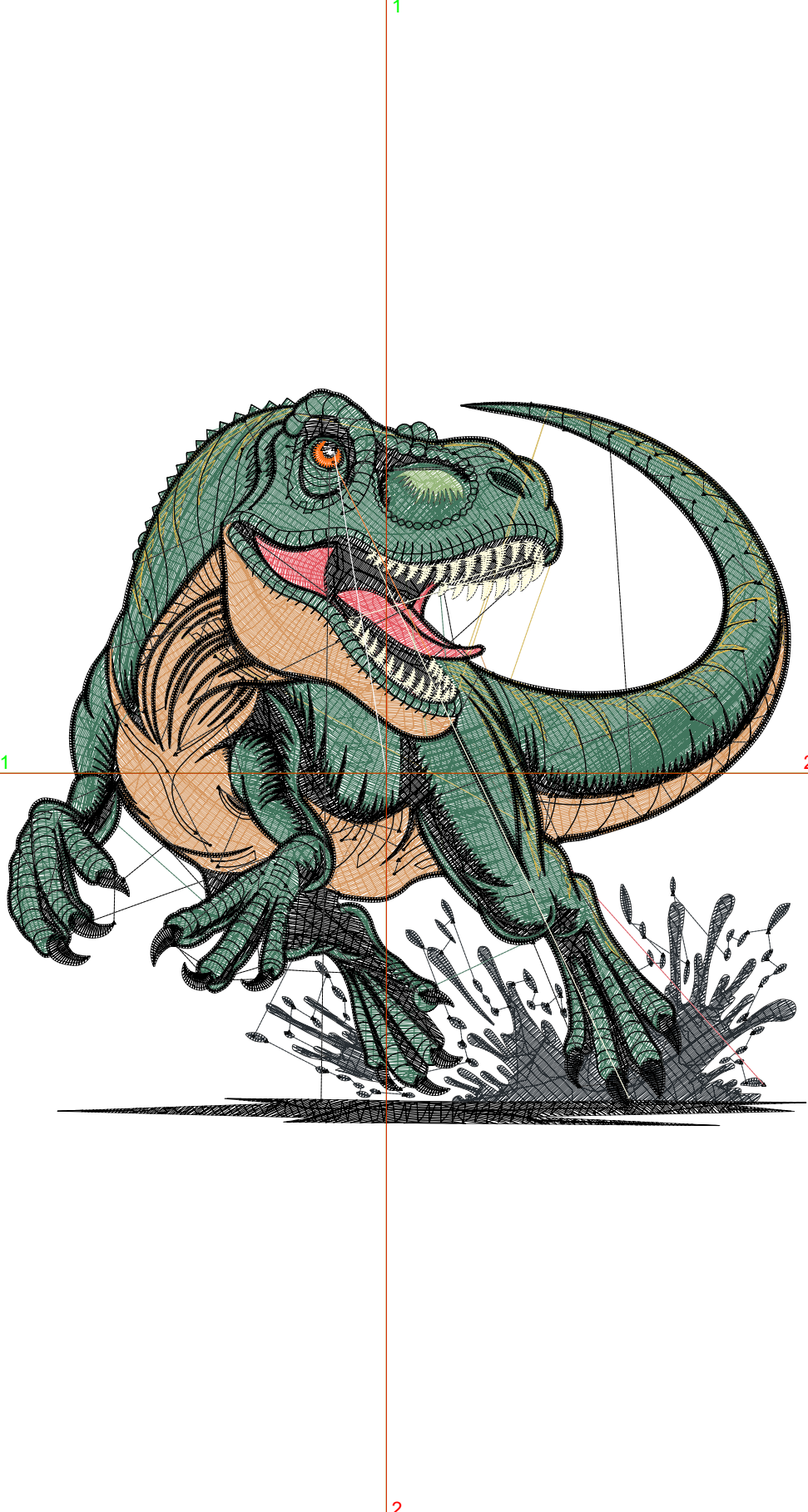
Wilcom EmbroideryStudio - Designing



Design: **5**

Title:

Stitches: 53,687
 Height: 4.61 in
 Width: 5.00 in
 Colors: 10
 Colorway: Colorway 1
 Zoom: 1:1



Machine format: Tajima
 Color changes: 9
 Stops: 10
 Trims: 249
 Appliqués: 0
 Left: 60.2 mm
 Right: 66.7 mm
 Up: 61.1 mm
 Down: 56.0 mm
 EndX: 0.00 in
 EndY: 0.00 in
 Area: 23.03 in²
 Max stitch: 10.8 mm
 Min stitch: 0.0 mm
 Max jump: 7.0 mm
 Total thread: 704.46ft
 Total bobbin: 206.76ft

Stop Sequence:

#	N#	Color	St.	Code	Name	Chart
1.	7		4,244		R40 G46 B51	
2.	5		660		R227 G87 B97	
3.	10		4,017		R214 G153 B99	
4.	4		310		R152 G184 B125	
5.	1		18,506		R65 G117 B93	
6.	11		1,085		R217 G185 B80	
7.	8		23,583	8	Black	Default
8.	2		1,157		R255 G253 B222	
9.	3		88		R255 G112 B24	
10.	9		35	9	White	Default

Production Worksheet

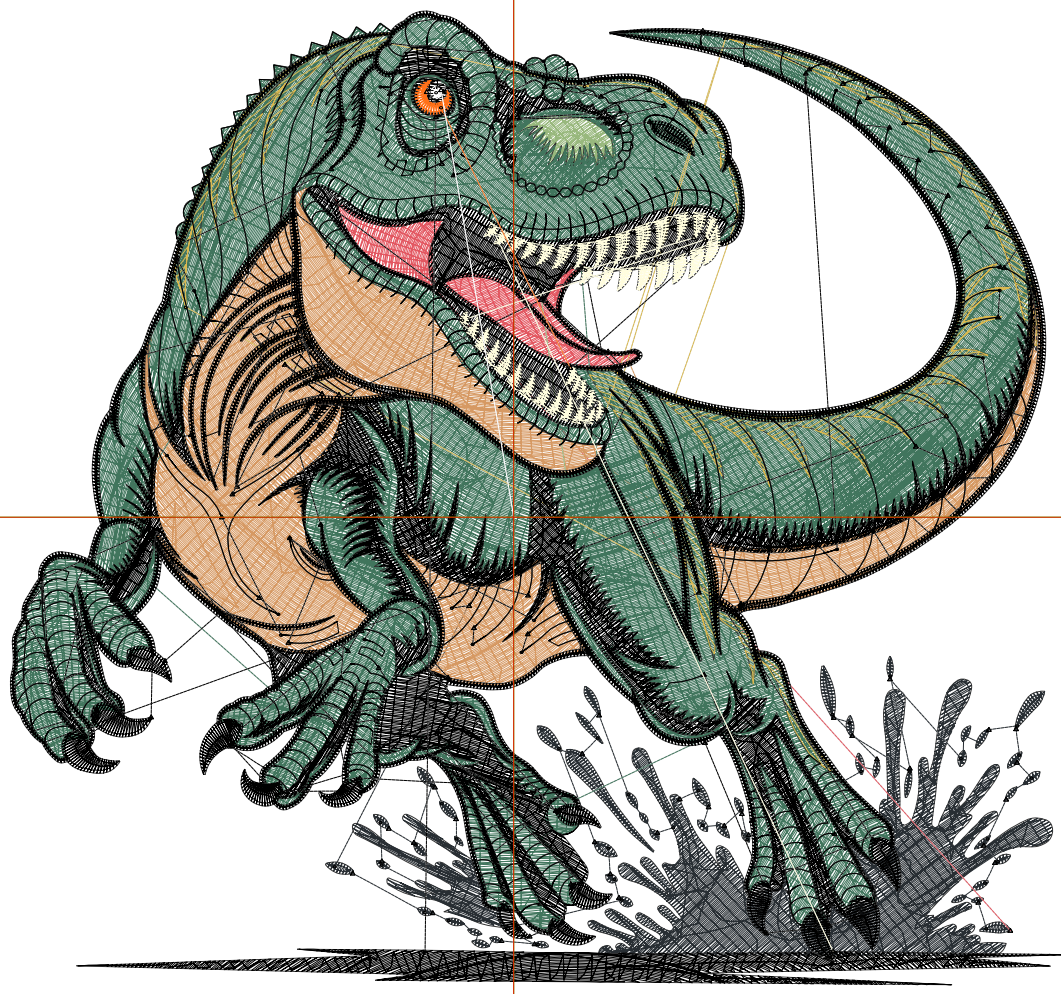
Wilcom EmbroideryStudio - Designing



Design: **5**

Title:

Stitches: 60,381
Height: 5.07 in
Width: 5.49 in
Colors: 10
Colorway: Colorway 1
Zoom: 1:1



Production Worksheet

Wilcom EmbroideryStudio - Designing



Design: **5**

Title:

Stitches: 60,381
 Height: 5.07 in
 Width: 5.49 in
 Colors: 10
 Colorway: Colorway 1
 Zoom: 1:1

Machine format: Tajima
 Color changes: 9
 Stops: 10
 Trims: 260
 Appliqués: 0
 Left: 66.6 mm
 Right: 73.0 mm
 Up: 67.0 mm
 Down: 61.8 mm
 EndX: 0.00 in
 EndY: 0.00 in
 Area 27.86 in²
 Max stitch: 10.9 mm
 Min stitch: 0.0 mm
 Max jump: 7.0 mm
 Total thread: 810.92ft
 Total bobbin: 243.81ft

Stop Sequence:

#	N#	Color	St.	Code	Name	Chart
1.	7		4,706		R40 G46 B51	
2.	5		782		R227 G87 B97	
3.	10		4,708		R214 G153 B99	
4.	4		370		R152 G184 B125	
5.	1		21,168		R65 G117 B93	
6.	11		1,180		R217 G185 B80	
7.	8		26,101	8	Black	Default
8.	2		1,236		R255 G253 B222	
9.	3		94		R255 G112 B24	
10.	9		34	9	White	Default

Production Worksheet

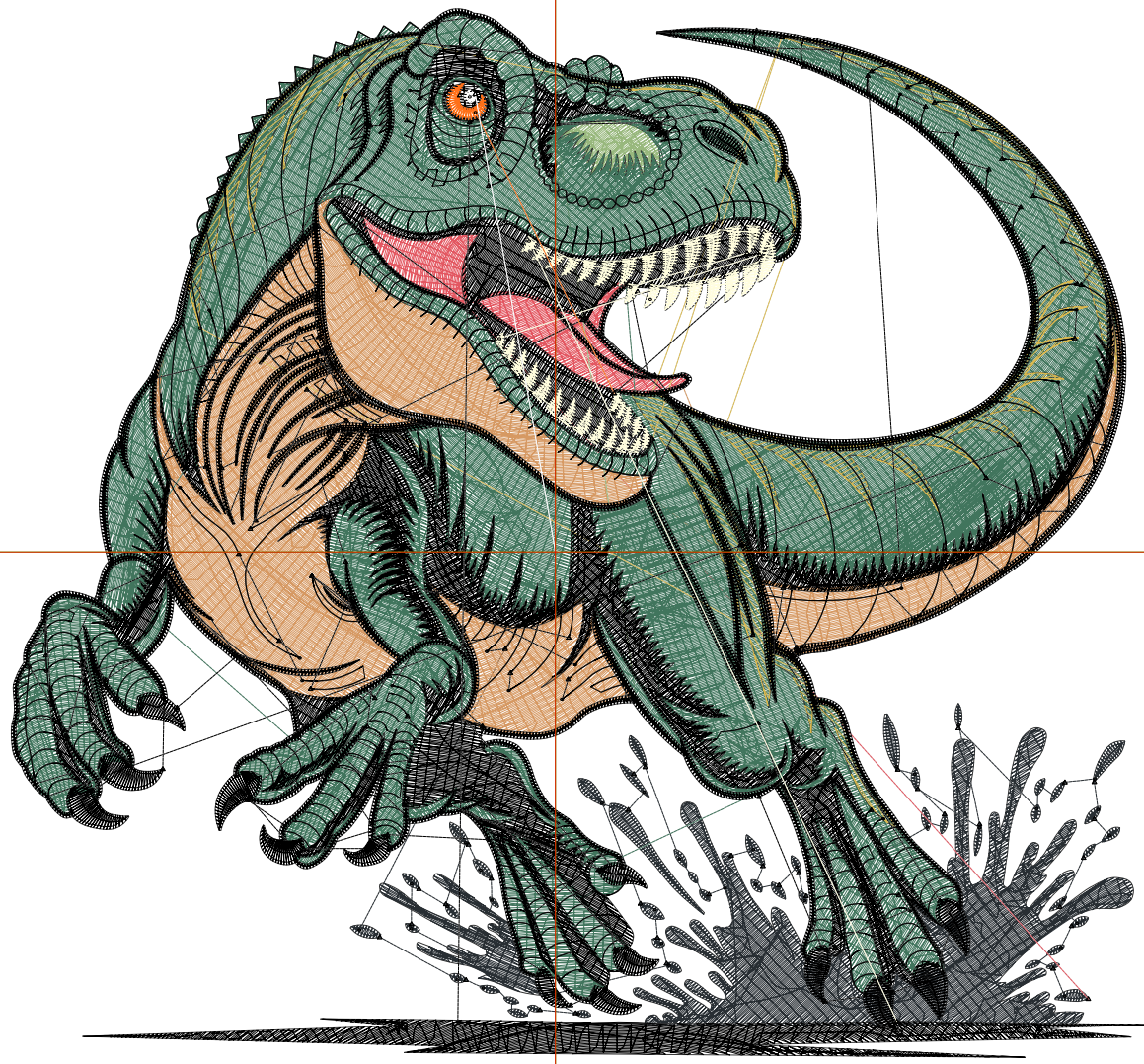
Wilcom EmbroideryStudio - Designing



Design: **6**

Title:

Stitches: 67,484
Height: 5.53 in
Width: 5.99 in
Colors: 10
Colorway: Colorway 1
Zoom: 1:1



Production Worksheet

Wilcom EmbroideryStudio - Designing



Design: **6**

Title:

Stitches: 67,484
 Height: 5.53 in
 Width: 5.99 in
 Colors: 10
 Colorway: Colorway 1
 Zoom: 1:1

Machine format: Tajima
 Color changes: 9
 Stops: 10
 Trims: 285
 Appliqués: 0
 Left: 72.9 mm
 Right: 79.2 mm
 Up: 72.8 mm
 Down: 67.7 mm
 EndX: 0.00 in
 EndY: 0.00 in
 Area 33.15 in²
 Max stitch: 9.6 mm
 Min stitch: 0.0 mm
 Max jump: 7.0 mm
 Total thread: 924.68ft
 Total bobbin: 283.61ft

Stop Sequence:

#	N#	Color	St.	Code	Name	Chart
1.	7		5,215		R40 G46 B51	
2.	5		879		R227 G87 B97	
3.	10		5,423		R214 G153 B99	
4.	4		406		R152 G184 B125	
5.	1		24,094		R65 G117 B93	
6.	11		1,344		R217 G185 B80	
7.	8		28,642	8	Black	Default
8.	2		1,340		R255 G253 B222	
9.	3		101		R255 G112 B24	
10.	9		38	9	White	Default

Production Worksheet

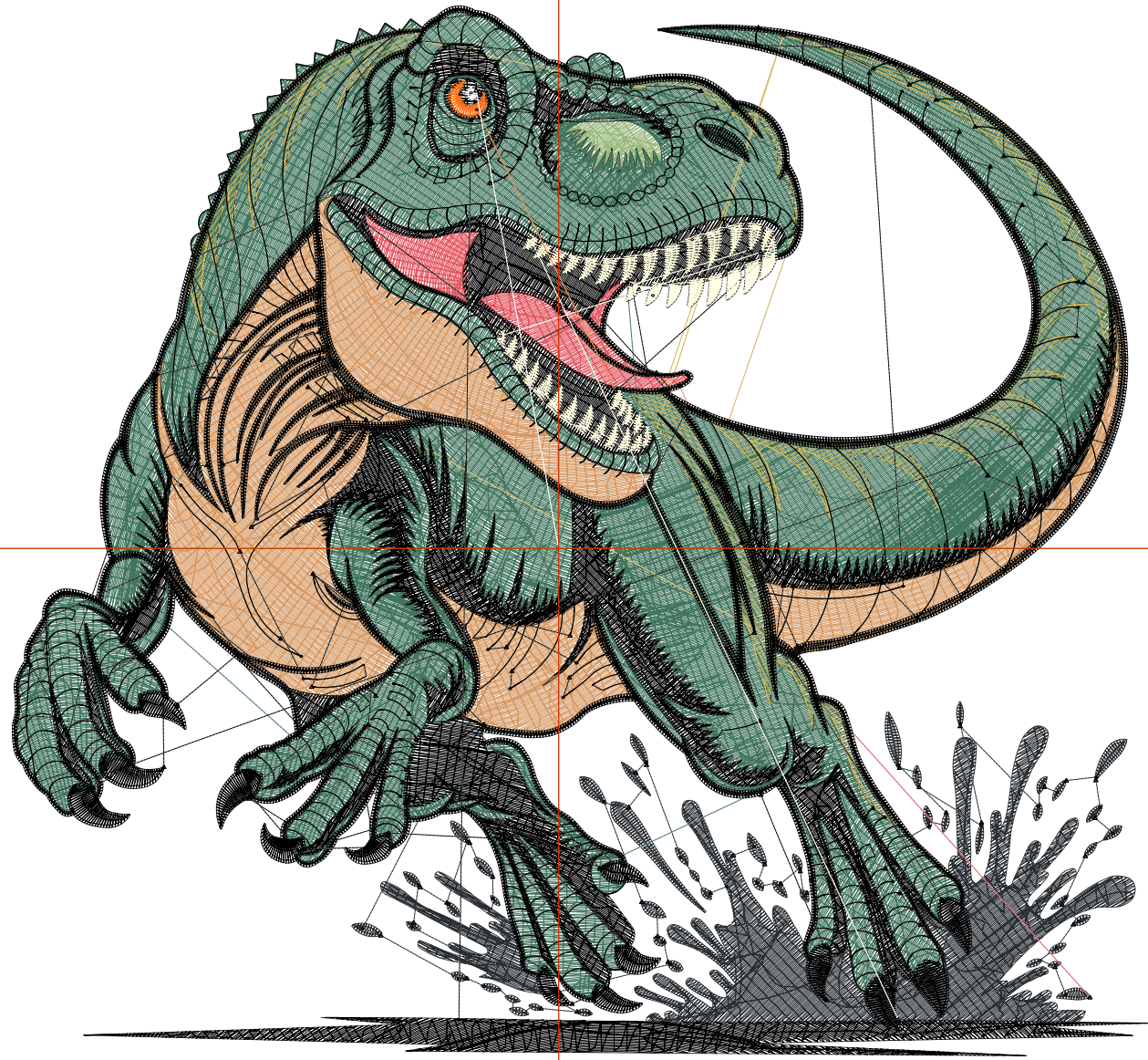
Wilcom EmbroideryStudio - Designing



Design: **6**

Title:

Stitches: 75,009
Height: 5.99 in
Width: 6.49 in
Colors: 10
Colorway: Colorway 1
Zoom: 1:1



Production Worksheet

Wilcom EmbroideryStudio - Designing



Design: **6**

Title:

Stitches: 75,009
 Height: 5.99 in
 Width: 6.49 in
 Colors: 10
 Colorway: Colorway 1
 Zoom: 1:1

Machine format: Tajima
 Color changes: 9
 Stops: 10
 Trims: 310
 Appliqués: 0
 Left: 79.3 mm
 Right: 85.6 mm
 Up: 78.7 mm
 Down: 73.6 mm
 EndX: 0.00 in
 EndY: 0.00 in
 Area 38.90 in²
 Max stitch: 9.5 mm
 Min stitch: 0.0 mm
 Max jump: 6.9 mm
 Total thread: 1046.78ft
 Total bobbin: 326.71ft

Stop Sequence:

#	N#	Color	St.	Code	Name	Chart
1.	7		5,757		R40 G46 B51	
2.	5		1,000		R227 G87 B97	
3.	10		6,279		R214 G153 B99	
4.	4		450		R152 G184 B125	
5.	1		27,278		R65 G117 B93	
6.	11		1,402		R217 G185 B80	
7.	8		31,255	8	Black	Default
8.	2		1,438		R255 G253 B222	
9.	3		106		R255 G112 B24	
10.	9		42	9	White	Default

Production Worksheet

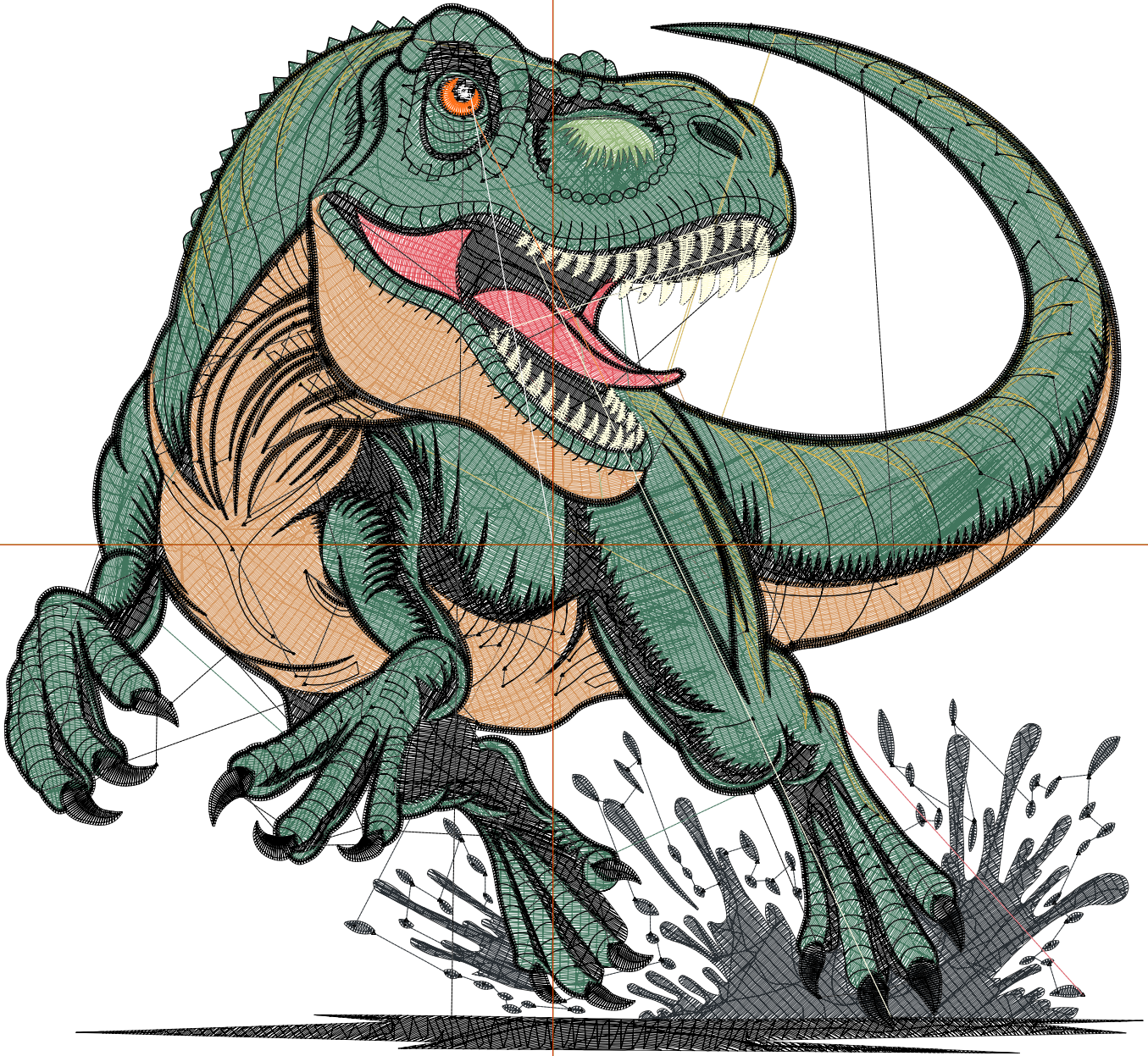
Wilcom EmbroideryStudio - Designing



Design: 7

Title:

Stitches: 82,743
Height: 6.45 in
Width: 7.00 in
Colors: 10
Colorway: Colorway 1
Zoom: 1:1



Production Worksheet

Wilcom EmbroideryStudio - Designing



Design: **7**

Title:

Stitches: 82,743
 Height: 6.45 in
 Width: 7.00 in
 Colors: 10
 Colorway: Colorway 1
 Zoom: 1:1

Machine format: Tajima
 Color changes: 9
 Stops: 10
 Trims: 333
 Appliqués: 0
 Left: 85.6 mm
 Right: 92.1 mm
 Up: 84.5 mm
 Down: 79.4 mm
 EndX: 0.00 in
 EndY: 0.00 in
 Area 45.16 in²
 Max stitch: 9.0 mm
 Min stitch: 0.0 mm
 Max jump: 6.9 mm
 Total thread: 1174.88ft
 Total bobbin: 372.54ft

Stop Sequence:

#	N#	Color	St.	Code	Name	Chart
1.	7		6,302		R40 G46 B51	
2.	5		1,084		R227 G87 B97	
3.	10		7,110		R214 G153 B99	
4.	4		481		R152 G184 B125	
5.	1		30,366		R65 G117 B93	
6.	11		1,603		R217 G185 B80	
7.	8		34,094	8	Black	Default
8.	2		1,546		R255 G253 B222	
9.	3		114		R255 G112 B24	
10.	9		41	9	White	Default

Production Worksheet

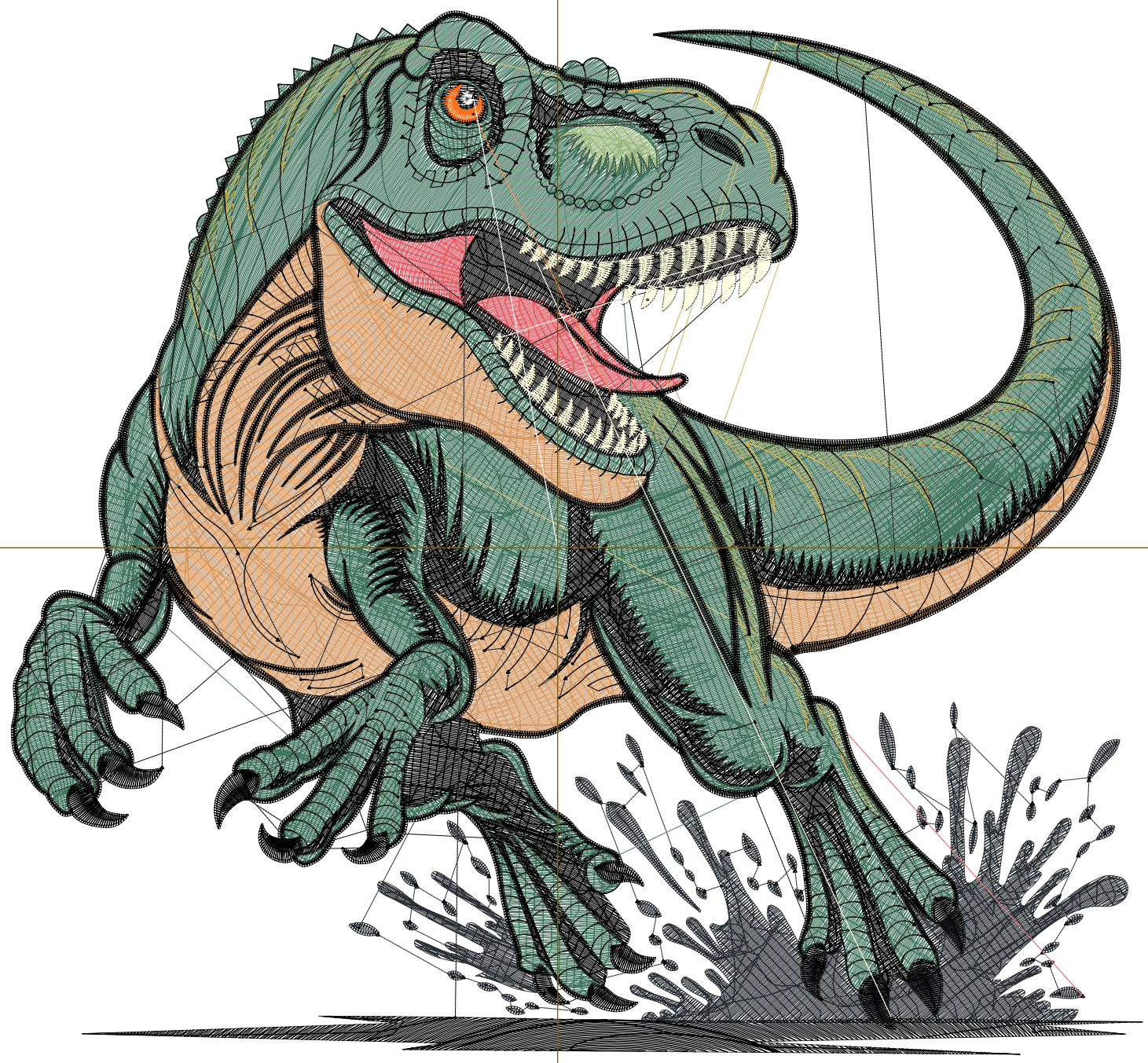
Wilcom EmbroideryStudio - Designing



Design: 7

Title:

Stitches: 89,451
Height: 6.92 in
Width: 7.49 in
Colors: 10
Colorway: Colorway 1
Zoom: 1:1



Production Worksheet

Wilcom EmbroideryStudio - Designing



Design: **7**

Title:

Stitches: 89,451
 Height: 6.92 in
 Width: 7.49 in
 Colors: 10
 Colorway: Colorway 1
 Zoom: 1:1

Machine format: Tajima
 Color changes: 9
 Stops: 10
 Trims: 353
 Appliqués: 0
 Left: 92.0 mm
 Right: 98.4 mm
 Up: 90.4 mm
 Down: 85.3 mm
 EndX: 0.00 in
 EndY: 0.00 in
 Area 51.82 in²
 Max stitch: 8.7 mm
 Min stitch: 0.0 mm
 Max jump: 7.0 mm
 Total thread: 1287.82ft
 Total bobbin: 413.39ft

Stop Sequence:

#	N#	Color	St.	Code	Name	Chart
1.	7		6,879		R40 G46 B51	
2.	5		1,224		R227 G87 B97	
3.	10		8,139		R214 G153 B99	
4.	4		542		R152 G184 B125	
5.	1		32,628		R65 G117 B93	
6.	11		1,734		R217 G185 B80	
7.	8		36,493	8	Black	Default
8.	2		1,644		R255 G253 B222	
9.	3		120		R255 G112 B24	
10.	9		46	9	White	Default