

Production Worksheet

Wilcom EmbroideryStudio - Designing



Design: **4**

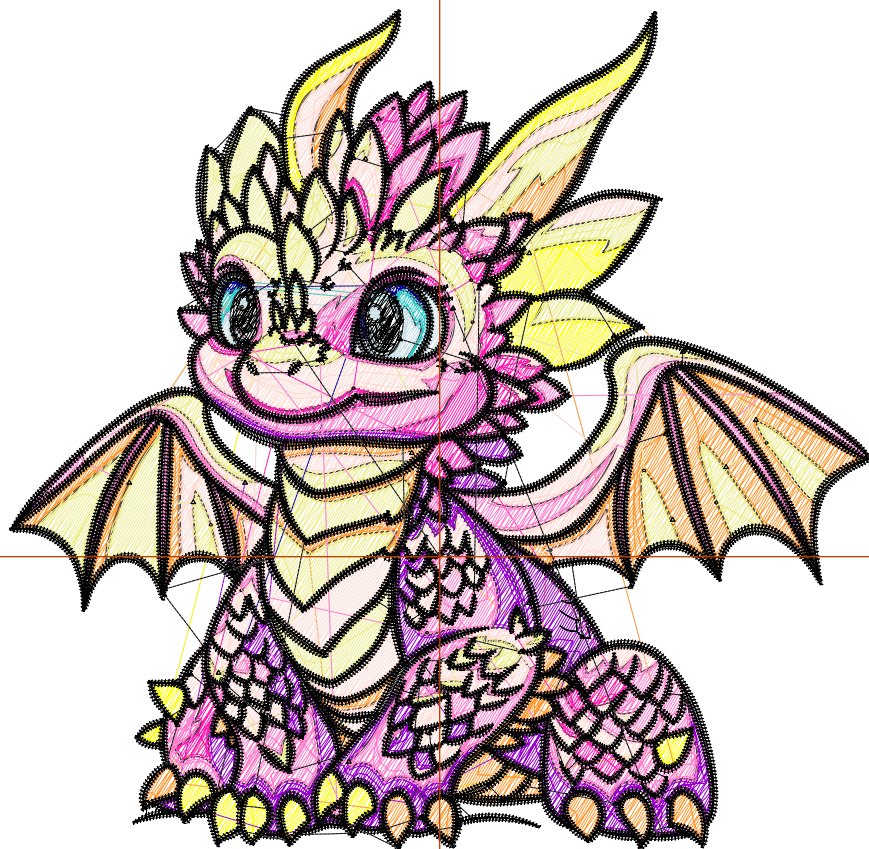
Title:

Stitches: 43,980
Height: 4.38 in
Width: 4.50 in
Colors: 11
Colorway: Colorway 1
Zoom: 1:1

Machine format: Tajima
Color changes: 10
Stops: 11
Trims: 199
Appliqués: 0
Left: 56.9 mm
Right: 57.5 mm
Up: 72.4 mm
Down: 38.9 mm
EndX: 0.00 in
EndY: 0.00 in
Area: 19.72 in²
Max stitch: 11.2 mm
Min stitch: 0.0 mm
Max jump: 7.0 mm
Total thread: 547.16ft
Total bobbin: 151.09ft

Stop Sequence:

#	N#	Color	St.	Code	Name	Chart
1.	4		1,184	4	Yellow	Default
2.	12		3,164	12	Orange	Default
3.	1		4,902		R255 G219 B212	
4.	2		3,546		R237 G237 B141	
5.	13		2,727	13	Purple	Default
6.	3		1,688		R255 G28 B179	
7.	10		149	10	Dark Blue	Default
8.	6		553		R198 G222 B230	
9.	5		123	5	Aqua	Default
10.	15		4,618	15	Pink	Default
11.	8		21,324	8	Black	Default



Production Worksheet

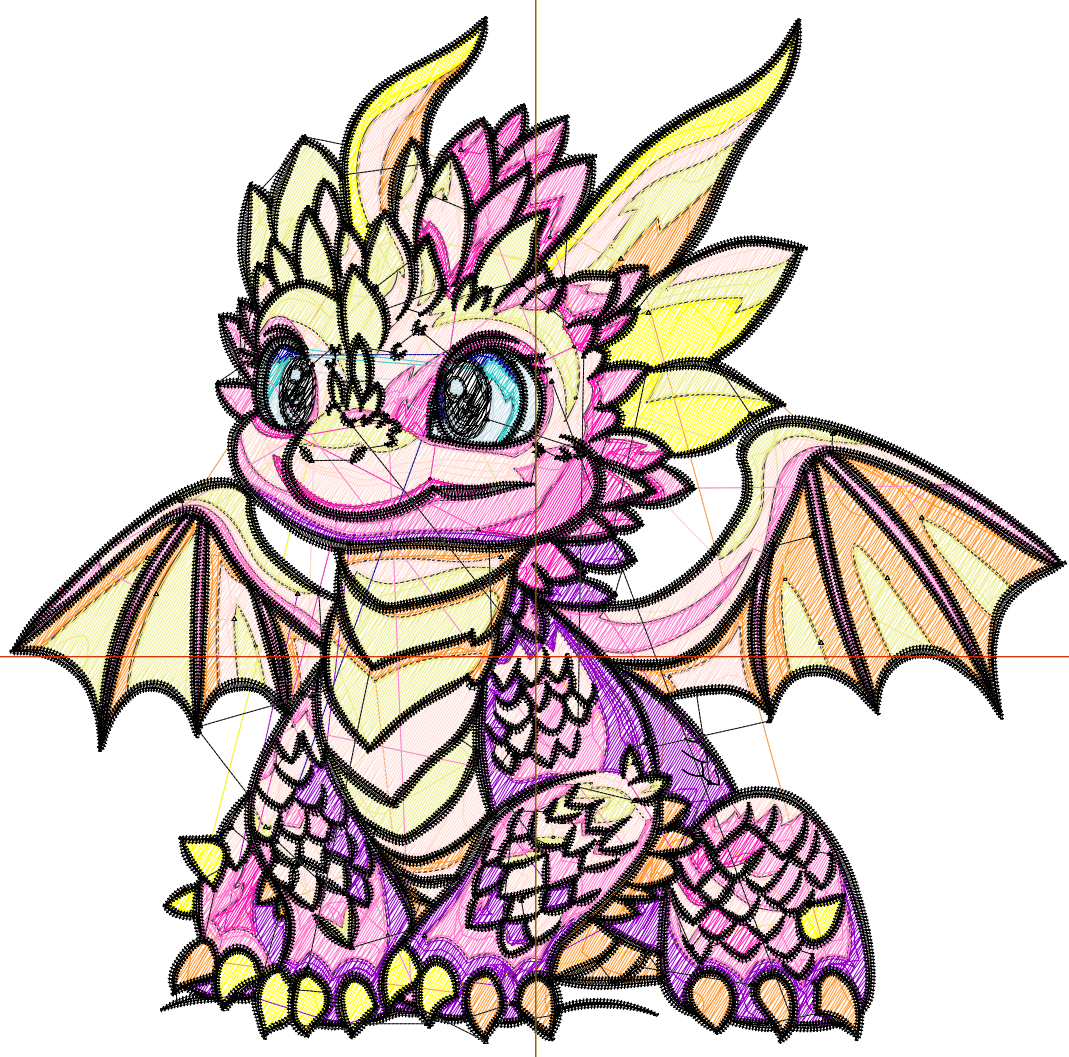
Wilcom EmbroideryStudio - Designing



Design: **5**

Title:

Stitches: 53,801
Height: 5.35 in
Width: 5.50 in
Colors: 11
Colorway: Colorway 1
Zoom: 1:1



1

2

2

Production Worksheet

Wilcom EmbroideryStudio - Designing



Design: **5**

Title:

Stitches: 53,801
 Height: 5.35 in
 Width: 5.50 in
 Colors: 11
 Colorway: Colorway 1
 Zoom: 1:1

Machine format: Tajima
 Color changes: 10
 Stops: 11
 Trims: 213
 Appliqués: 0
 Left: 69.6 mm
 Right: 70.2 mm
 Up: 84.7 mm
 Down: 51.2 mm
 EndX: 0.00 in
 EndY: 0.00 in
 Area 29.45 in²
 Max stitch: 9.4 mm
 Min stitch: 0.0 mm
 Max jump: 7.0 mm
 Total thread: 704.66ft
 Total bobbin: 206.24ft

Stop Sequence:

#	N#	Color	St.	Code	Name	Chart
1.	4		1,499	4	Yellow	Default
2.	12		3,954	12	Orange	Default
3.	1		6,075		R255 G219 B212	
4.	2		4,487		R237 G237 B141	
5.	13		3,346	13	Purple	Default
6.	3		2,047		R255 G28 B179	
7.	10		185	10	Dark Blue	Default
8.	6		671		R198 G222 B230	
9.	5		148	5	Aqua	Default
10.	15		5,746	15	Pink	Default
11.	8		25,641	8	Black	Default

Production Worksheet

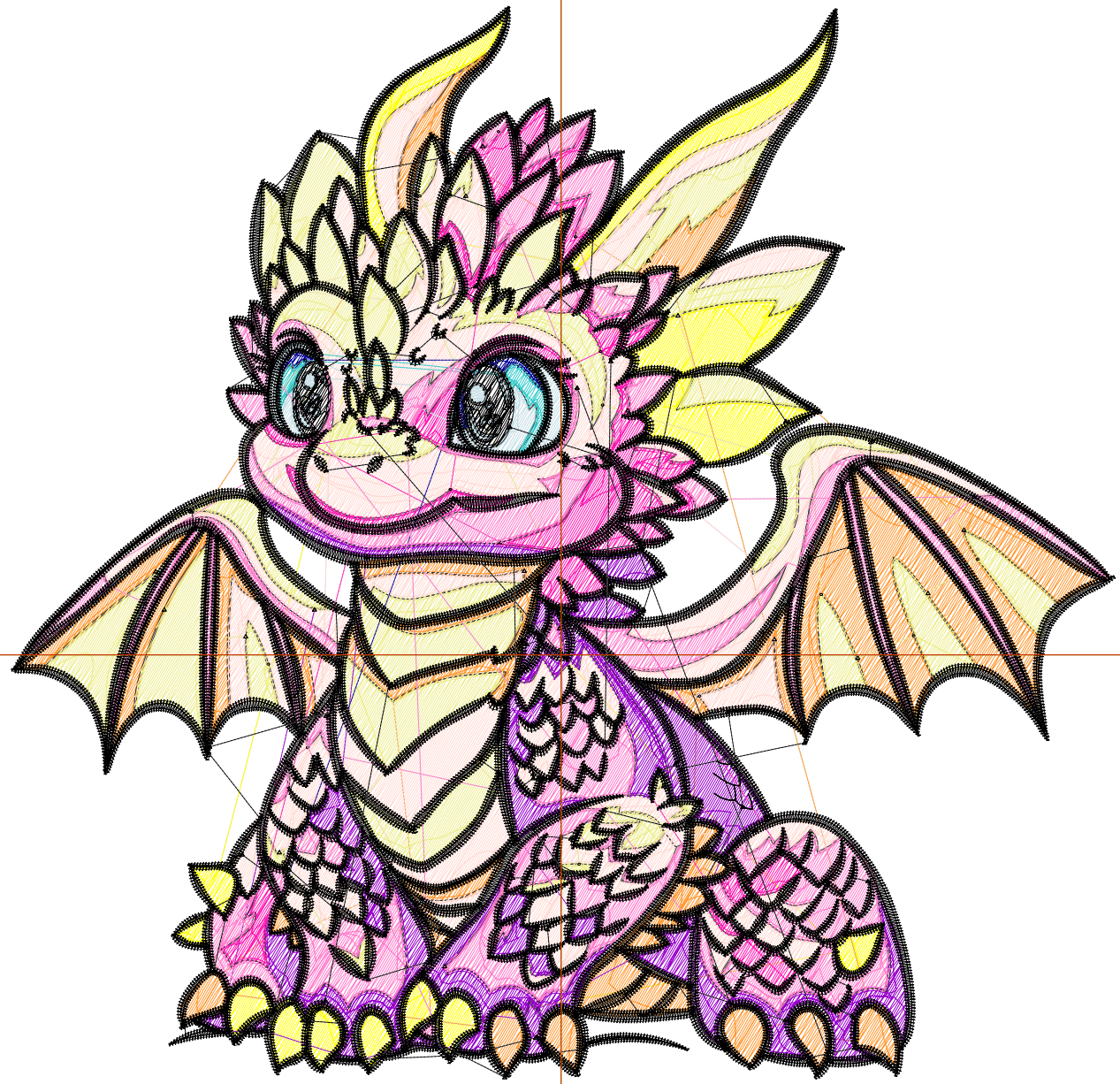
Wilcom EmbroideryStudio - Designing



Design: **6**

Title:

Stitches: 64,132
Height: 6.32 in
Width: 6.50 in
Colors: 11
Colorway: Colorway 1
Zoom: 1:1



Production Worksheet

Wilcom EmbroideryStudio - Designing



Design: **6**

Title:

Stitches: 64,132
 Height: 6.32 in
 Width: 6.50 in
 Colors: 11
 Colorway: Colorway 1
 Zoom: 1:1

Machine format: Tajima
 Color changes: 10
 Stops: 11
 Trims: 227
 Appliqués: 0
 Left: 82.3 mm
 Right: 82.9 mm
 Up: 97.0 mm
 Down: 63.5 mm
 EndX: 0.00 in
 EndY: 0.00 in
 Area 41.12 in²
 Max stitch: 11.8 mm
 Min stitch: 0.0 mm
 Max jump: 7.0 mm
 Total thread: 880.15ft
 Total bobbin: 270.06ft

Stop Sequence:

#	N#	Color	St.	Code	Name	Chart
1.	4		1,862	4	Yellow	Default
2.	12		4,783	12	Orange	Default
3.	1		7,413		R255 G219 B212	
4.	2		5,480		R237 G237 B141	
5.	13		4,059	13	Purple	Default
6.	3		2,497		R255 G28 B179	
7.	10		206	10	Dark Blue	Default
8.	6		780		R198 G222 B230	
9.	5		191	5	Aqua	Default
10.	15		6,946	15	Pink	Default
11.	8		29,913	8	Black	Default

Production Worksheet

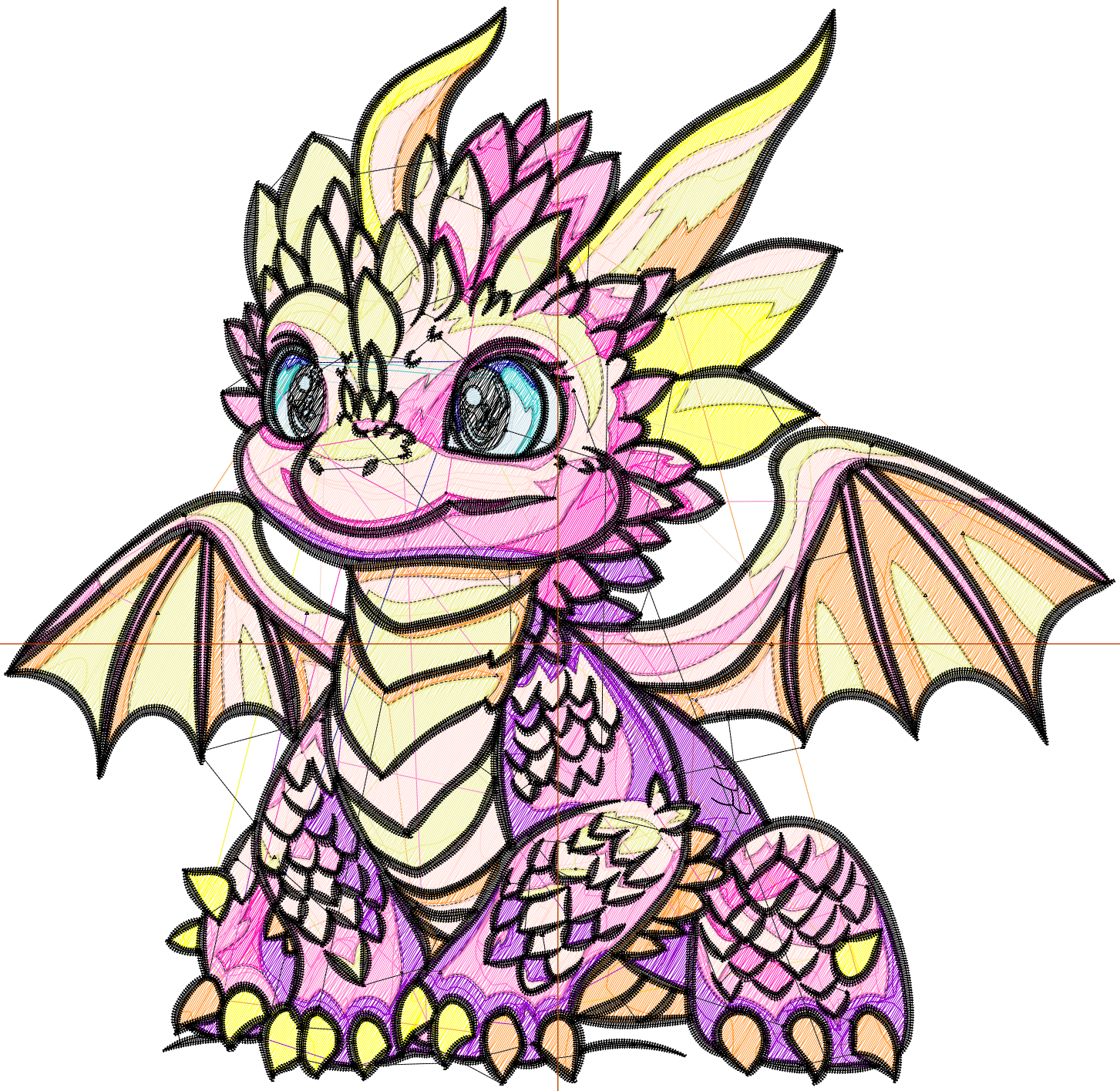
Wilcom EmbroideryStudio - Designing



Design: 7

Title:

Stitches: 74,841
Height: 7.29 in
Width: 7.50 in
Colors: 11
Colorway: Colorway 1
Zoom: 1:1



Production Worksheet

Wilcom EmbroideryStudio - Designing



Design: **7**

Title:

Stitches: 74,841
 Height: 7.29 in
 Width: 7.50 in
 Colors: 11
 Colorway: Colorway 1
 Zoom: 1:1

Machine format: Tajima
 Color changes: 10
 Stops: 11
 Trims: 236
 Appliqués: 0
 Left: 95.0 mm
 Right: 95.6 mm
 Up: 109.4 mm
 Down: 75.9 mm
 EndX: 0.00 in
 EndY: 0.00 in
 Area 54.73 in²
 Max stitch: 9.5 mm
 Min stitch: 0.0 mm
 Max jump: 7.0 mm
 Total thread: 1071.74ft
 Total bobbin: 341.96ft

Stop Sequence:

#	N#	Color	St.	Code	Name	Chart
1.	4		2,310	4	Yellow	Default
2.	12		5,695	12	Orange	Default
3.	1		8,804		R255 G219 B212	
4.	2		6,608		R237 G237 B141	
5.	13		4,719	13	Purple	Default
6.	3		2,970		R255 G28 B179	
7.	10		251	10	Dark Blue	Default
8.	6		903		R198 G222 B230	
9.	5		214	5	Aqua	Default
10.	15		8,129	15	Pink	Default
11.	8		34,236	8	Black	Default