

Production Worksheet

Wilcom EmbroideryStudio - Designing



Design: **3**

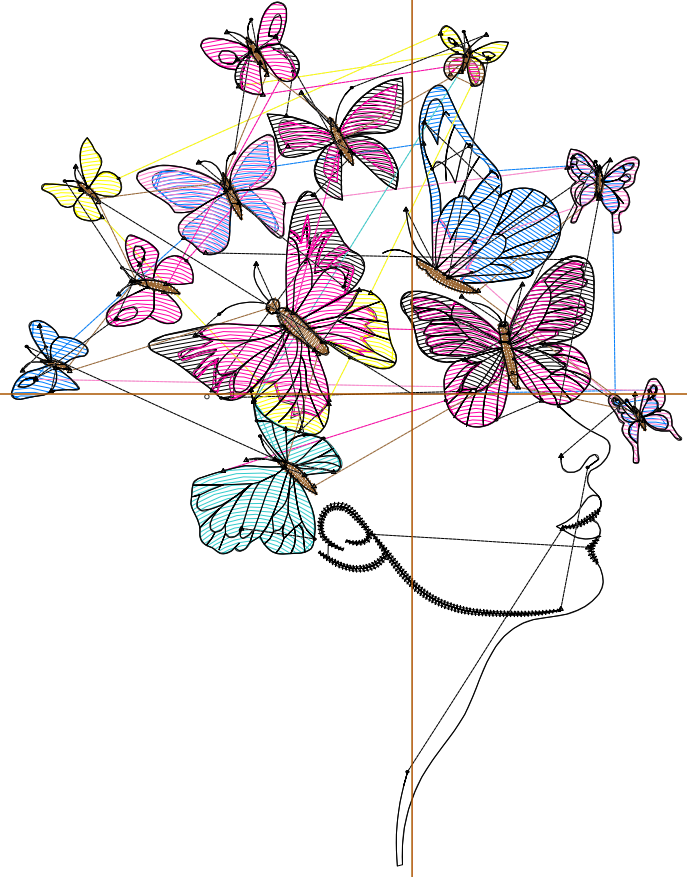
Title:

Stitches: 8,329
 Height: 4.50 in
 Width: 3.49 in
 Colors: 7
 Colorway: Colorway 1
 Zoom: 1:1

Machine format: Tajima
 Color changes: 7
 Stops: 8
 Trims: 113
 Appliqués: 0
 Left: 53.0 mm
 Right: 35.7 mm
 Up: 51.8 mm
 Down: 62.4 mm
 EndX: 0.00 in
 EndY: 0.00 in
 Area: 15.70 in²
 Max stitch: 6.9 mm
 Min stitch: 0.0 mm
 Max jump: 6.9 mm
 Total thread: 103.02ft
 Total bobbin: 27.11ft

Stop Sequence:

#	N#	Color	St.	Code	Name	Chart
1.	3		845	R2	G128 B255	
2.	15		581	15	Pink	Default
3.	8		893	8	Black	Default
4.	4		387	4	Yellow	Default
5.	5		283	5	Aqua	Default
6.	2		1,484	R255	G0 B166	
7.	14		744	14	Brown	Default
8.	8		3,110	8	Black	Default



Production Worksheet

Wilcom EmbroideryStudio - Designing



Design: **4**

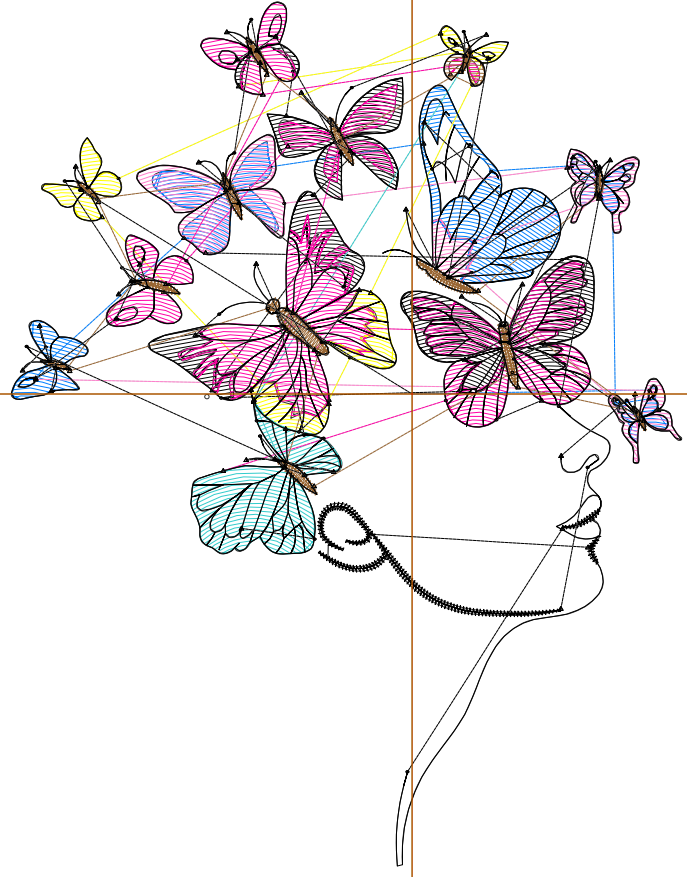
Title:

Stitches: 8,329
 Height: 4.50 in
 Width: 3.49 in
 Colors: 7
 Colorway: Colorway 1
 Zoom: 1:1

Machine format: Tajima
 Color changes: 7
 Stops: 8
 Trims: 113
 Appliqués: 0
 Left: 53.0 mm
 Right: 35.7 mm
 Up: 51.8 mm
 Down: 62.4 mm
 EndX: 0.00 in
 EndY: 0.00 in
 Area: 15.70 in²
 Max stitch: 6.9 mm
 Min stitch: 0.0 mm
 Max jump: 6.9 mm
 Total thread: 103.02ft
 Total bobbin: 27.11ft

Stop Sequence:

#	N#	Color	St.	Code	Name	Chart
1.	3		845	R2	G128 B255	
2.	15		581	15	Pink	Default
3.	8		893	8	Black	Default
4.	4		387	4	Yellow	Default
5.	5		283	5	Aqua	Default
6.	2		1,484		R255 G0 B166	
7.	14		744	14	Brown	Default
8.	8		3,110	8	Black	Default



Production Worksheet

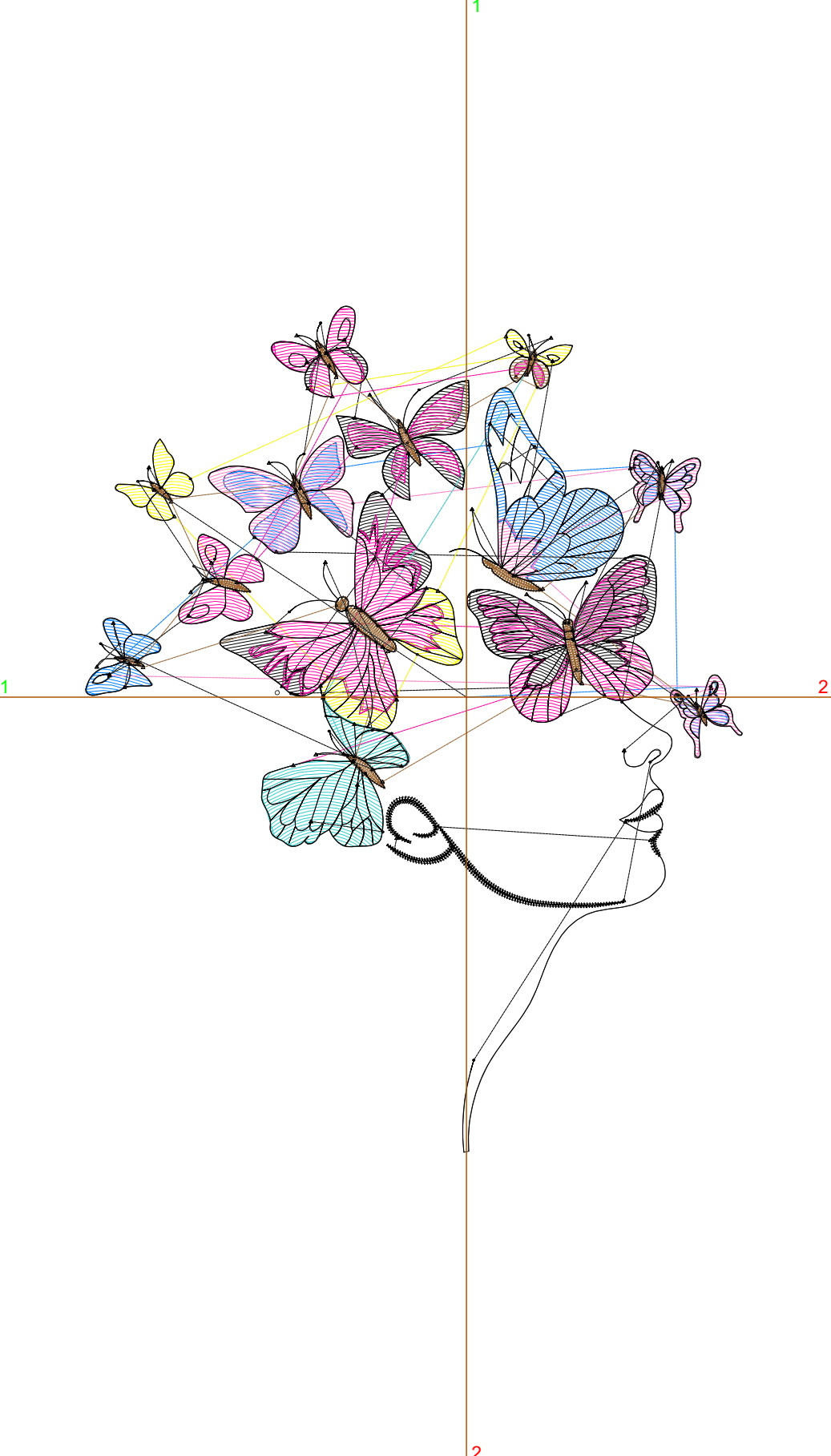
Wilcom EmbroideryStudio - Designing



Design: **5**

Title:

Stitches: 10,230
 Height: 5.50 in
 Width: 4.27 in
 Colors: 7
 Colorway: Colorway 1
 Zoom: 1:1



Machine format: Tajima
 Color changes: 7
 Stops: 8
 Trims: 116
 Appliqués: 0
 Left: 62.8 mm
 Right: 45.5 mm
 Up: 64.5 mm
 Down: 75.1 mm
 EndX: 0.00 in
 EndY: 0.00 in
 Area: 23.46 in²
 Max stitch: 6.9 mm
 Min stitch: 0.0 mm
 Max jump: 6.9 mm
 Total thread: 131.18ft
 Total bobbin: 36.40ft

Stop Sequence:

#	N#	Color	St.	Code	Name	Chart
1.	3		1,081	R2	G128 B255	
2.	15		769	15	Pink	Default
3.	8		1,167	8	Black	Default
4.	4		473	4	Yellow	Default
5.	5		387	5	Aqua	Default
6.	2		1,942	R255	G0 B166	
7.	14		877	14	Brown	Default
8.	8		3,532	8	Black	Default

Production Worksheet

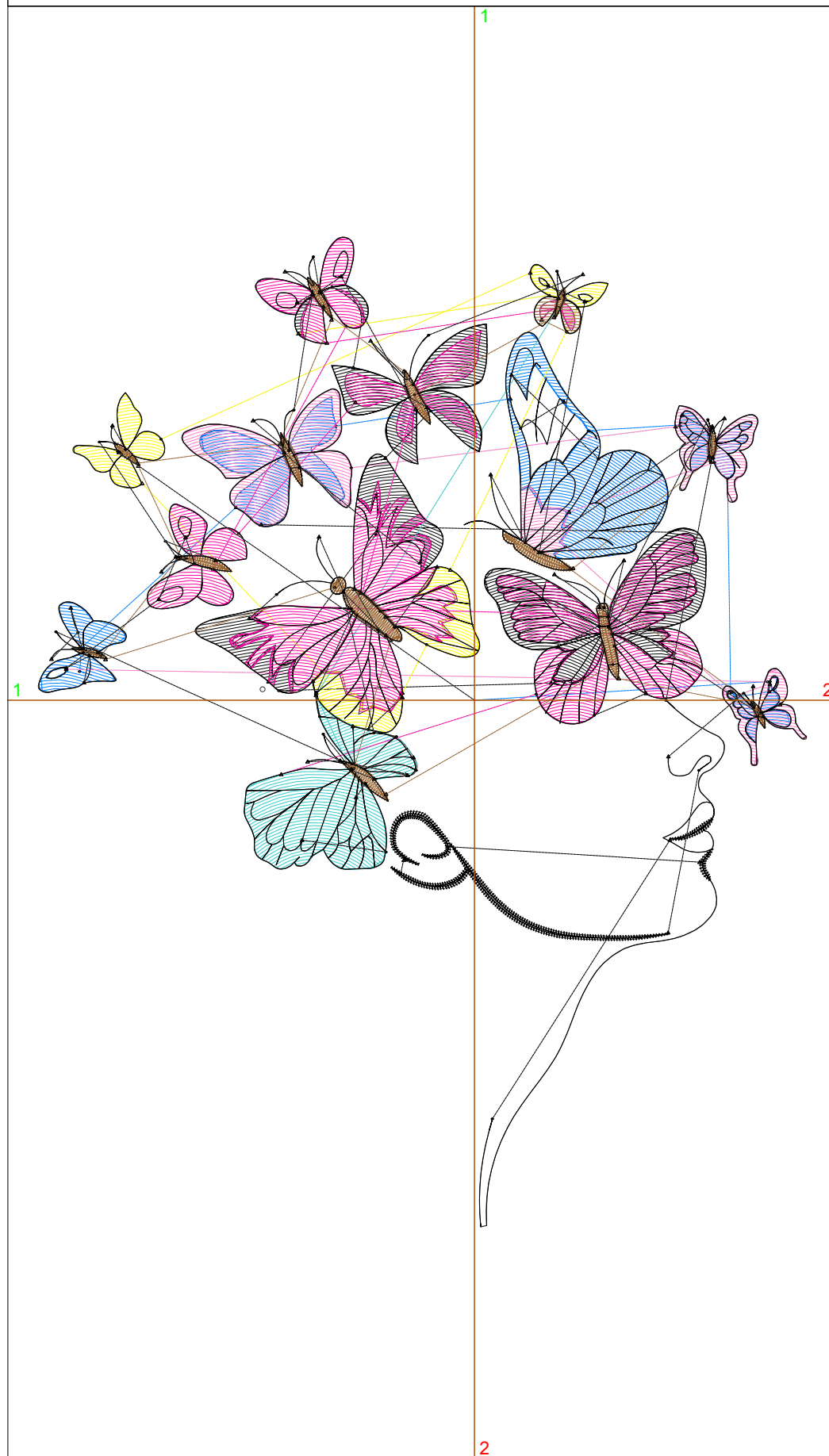
Wilcom EmbroideryStudio - Designing



Design: **6**

Title:

Stitches: 12,306
 Height: 6.50 in
 Width: 5.04 in
 Colors: 7
 Colorway: Colorway 1
 Zoom: 1:1



Machine format: Tajima
 Color changes: 7
 Stops: 8
 Trims: 119
 Appliqués: 0
 Left: 72.7 mm
 Right: 55.4 mm
 Up: 77.2 mm
 Down: 87.8 mm
 EndX: 0.00 in
 EndY: 0.00 in
 Area: 32.76 in²
 Max stitch: 7.0 mm
 Min stitch: 0.0 mm
 Max jump: 7.0 mm
 Total thread: 162.78ft
 Total bobbin: 47.05ft

Stop Sequence:

#	N#	Color	St.	Code	Name	Chart
1.	3		1,382		R2 G128 B255	
2.	15		944	15	Pink	Default
3.	8		1,469	8	Black	Default
4.	4		598	4	Yellow	Default
5.	5		490	5	Aqua	Default
6.	2		2,481		R255 G0 B166	
7.	14		1,020	14	Brown	Default
8.	8		3,920	8	Black	Default

Production Worksheet

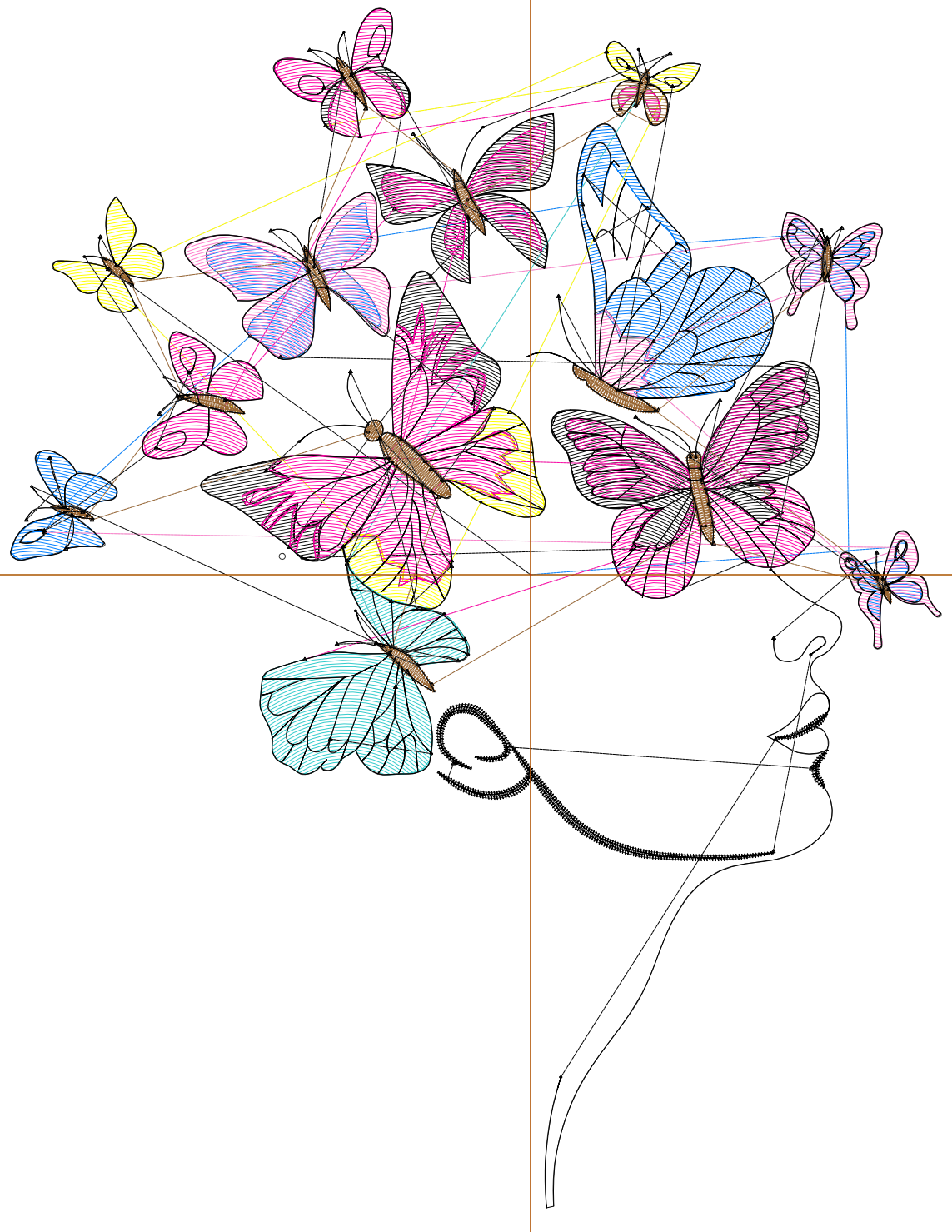
Wilcom EmbroideryStudio - Designing



Design: **7**

Title:

Stitches: 14,487
Height: 7.50 in
Width: 5.82 in
Colors: 7
Colorway: Colorway 1
Zoom: 1:1



Production Worksheet

Wilcom EmbroideryStudio - Designing



Design: **7**

Title:

Stitches: 14,487
 Height: 7.50 in
 Width: 5.82 in
 Colors: 7
 Colorway: Colorway 1
 Zoom: 1:1

Machine format: Tajima
 Color changes: 7
 Stops: 8
 Trims: 124
 Appliqués: 0
 Left: 82.6 mm
 Right: 65.2 mm
 Up: 89.9 mm
 Down: 100.5 mm
 EndX: 0.00 in
 EndY: 0.00 in
 Area 43.63 in²
 Max stitch: 7.0 mm
 Min stitch: 0.0 mm
 Max jump: 7.0 mm
 Total thread: 197.09ft
 Total bobbin: 58.91ft

Stop Sequence:

#	N#	Color	St.	Code	Name	Chart
1.	3		1,668		R2 G128 B255	
2.	15		1,161	15	Pink	Default
3.	8		1,813	8	Black	Default
4.	4		751	4	Yellow	Default
5.	5		610	5	Aqua	Default
6.	2		3,041		R255 G0 B166	
7.	14		1,148	14	Brown	Default
8.	8		4,293	8	Black	Default