

# Production Worksheet

Wilcom EmbroideryStudio - Designing

Stitches: 16,292  
 Height: 3.50 in  
 Width: 3.21 in  
 Colors: 10  
 Colorway: Colorway 1  
 Zoom: 1:1



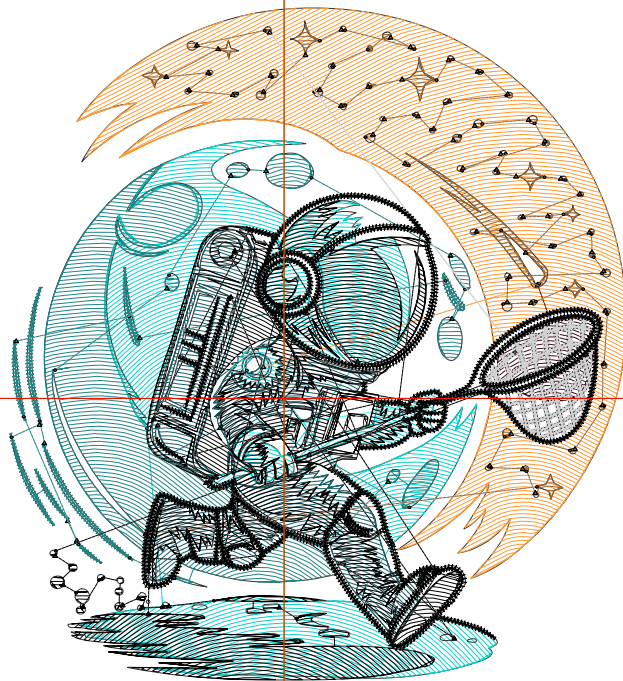
Design: **3**

Title:

Machine format: Tajima  
 Color changes: 9  
 Stops: 10  
 Trims: 124  
 Appliqués: 0  
 Left: 36.3 mm  
 Right: 45.2 mm  
 Up: 51.7 mm  
 Down: 37.2 mm  
 EndX: 0.00 in  
 EndY: 0.00 in  
 Area: 11.23 in<sup>2</sup>  
 Max stitch: 6.9 mm  
 Min stitch: 0.0 mm  
 Max jump: 6.9 mm  
 Total thread: 198.77ft  
 Total bobbin: 52.50ft

Stop Sequence:

#	N#	Color	St.	Code	Name	Chart
1.	9		1,816	R9	G209 B206	
2.	4		1,186	R21	G96 B105	
3.	5		80	5	Aqua	Default
4.	12		1,844	12	Orange	Default
5.	6		167	R61	G8 B32	
6.	7		39	R64	G255 B255	
7.	2		1,863	R33	G133 B133	
8.	14		986	14	Brown	Default
9.	1		1,190	R209	G209 B209	
10.	8		7,119	8	Black	Default



# Production Worksheet

Wilcom EmbroideryStudio - Designing



Design: **4**

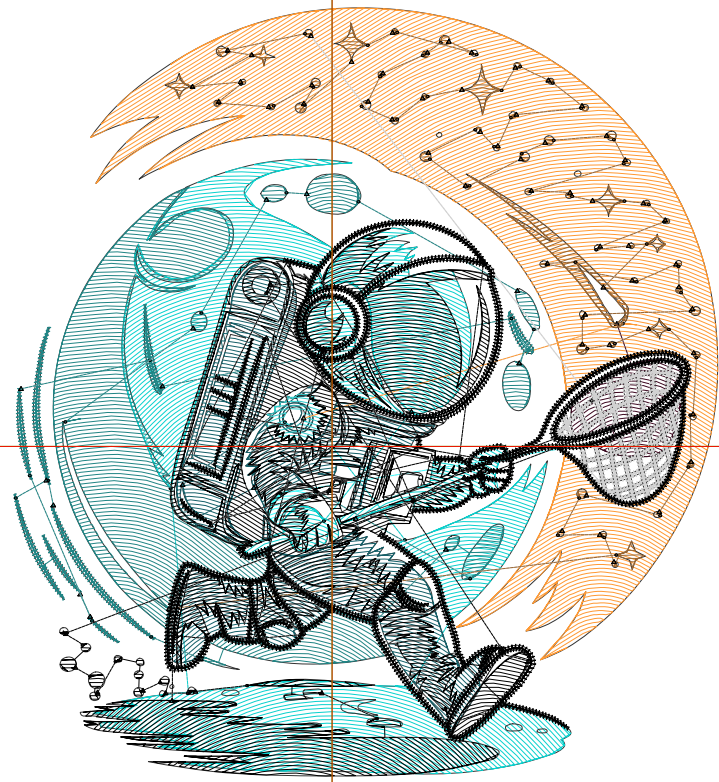
Title:

Stitches: 19,144  
Height: 4.00 in  
Width: 3.67 in  
Colors: 10  
Colorway: Colorway 1  
Zoom: 1:1

Machine format: Tajima  
Color changes: 9  
Stops: 10  
Trims: 124  
Appliqués: 0  
Left: 42.1 mm  
Right: 51.0 mm  
Up: 58.0 mm  
Down: 43.6 mm  
EndX: 0.00 in  
EndY: 0.00 in  
Area: 14.66 in<sup>2</sup>  
Max stitch: 6.9 mm  
Min stitch: 0.0 mm  
Max jump: 6.9 mm  
Total thread: 238.12ft  
Total bobbin: 64.72ft

Stop Sequence:

#	N#	Color	St.	Code	Name	Chart
1.	9		2,166	R9	G209 B206	
2.	4		1,426	R21	G96 B105	
3.	5		94	5	Aqua	Default
4.	12		2,511	12	Orange	Default
5.	6		202	R61	G8 B32	
6.	7		40	R64	G255 B255	
7.	2		2,164	R33	G133 B133	
8.	14		1,101	14	Brown	Default
9.	1		1,327	R209	G209 B209	
10.	8		8,111	8	Black	Default



# Production Worksheet

Wilcom EmbroideryStudio - Designing



Design: **4**

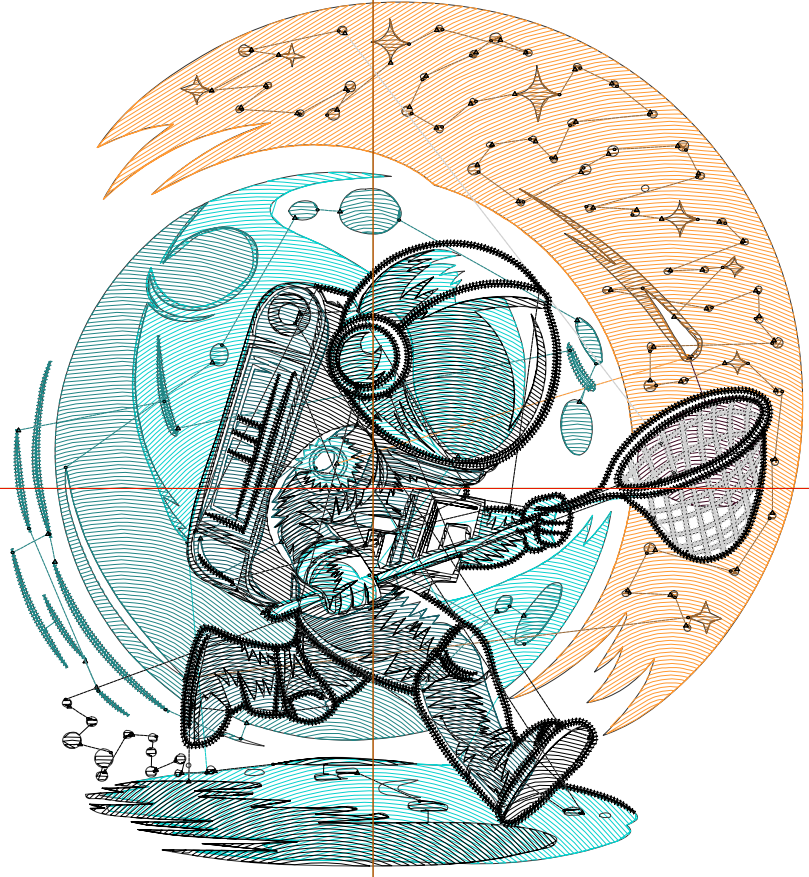
Title:

Stitches: 22,308  
 Height: 4.50 in  
 Width: 4.12 in  
 Colors: 10  
 Colorway: Colorway 1  
 Zoom: 1:1

Machine format: Tajima  
 Color changes: 9  
 Stops: 10  
 Trims: 133  
 Appliqués: 0  
 Left: 47.9 mm  
 Right: 56.8 mm  
 Up: 64.3 mm  
 Down: 49.9 mm  
 EndX: 0.00 in  
 EndY: 0.00 in  
 Area: 18.55 in<sup>2</sup>  
 Max stitch: 7.0 mm  
 Min stitch: 0.0 mm  
 Max jump: 7.0 mm  
 Total thread: 282.54ft  
 Total bobbin: 78.74ft

Stop Sequence:

#	N#	Color	St.	Code	Name	Chart
1.	9		2,640	R9	G209 B206	
2.	4		1,652	R21	G96 B105	
3.	5		100	5	Aqua	Default
4.	12		3,091	12	Orange	Default
5.	6		246	R61	G8 B32	
6.	7		50	R64	G255 B255	
7.	2		2,576	R33	G133 B133	
8.	14		1,225	14	Brown	Default
9.	1		1,488	R209	G209 B209	
10.	8		9,238	8	Black	Default



# Production Worksheet

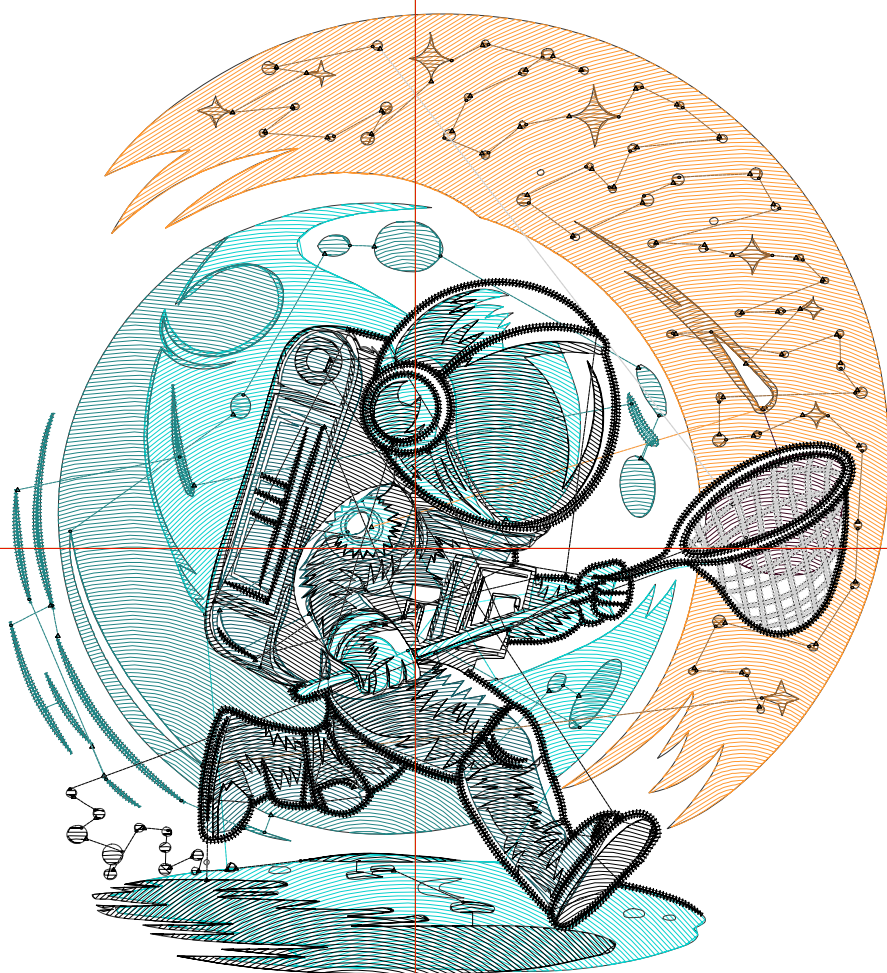
Wilcom EmbroideryStudio - Designing



Design: **5**

Title:

Stitches: 25,433  
Height: 5.00 in  
Width: 4.58 in  
Colors: 10  
Colorway: Colorway 1  
Zoom: 1:1



Machine format: Tajima  
Color changes: 9  
Stops: 10  
Trims: 137  
Appliqués: 0  
Left: 53.7 mm  
Right: 62.6 mm  
Up: 70.7 mm  
Down: 56.3 mm  
EndX: 0.00 in  
EndY: 0.00 in  
Area: 22.90 in<sup>2</sup>  
Max stitch: 7.0 mm  
Min stitch: 0.0 mm  
Max jump: 7.0 mm  
Total thread: 328.26ft  
Total bobbin: 93.69ft

### Stop Sequence:

#	N#	Color	St.	Code	Name	Chart
1.	9		3,076	R9	G209 B206	
2.	4		1,944	R21	G96 B105	
3.	5		116	5	Aqua	Default
4.	12		3,702	12	Orange	Default
5.	6		289	R61	G8 B32	
6.	7		59	R64	G255 B255	
7.	2		2,969	R33	G133 B133	
8.	14		1,246	14	Brown	Default
9.	1		1,650	R209	G209 B209	
10.	8		10,380	8	Black	Default

# Production Worksheet

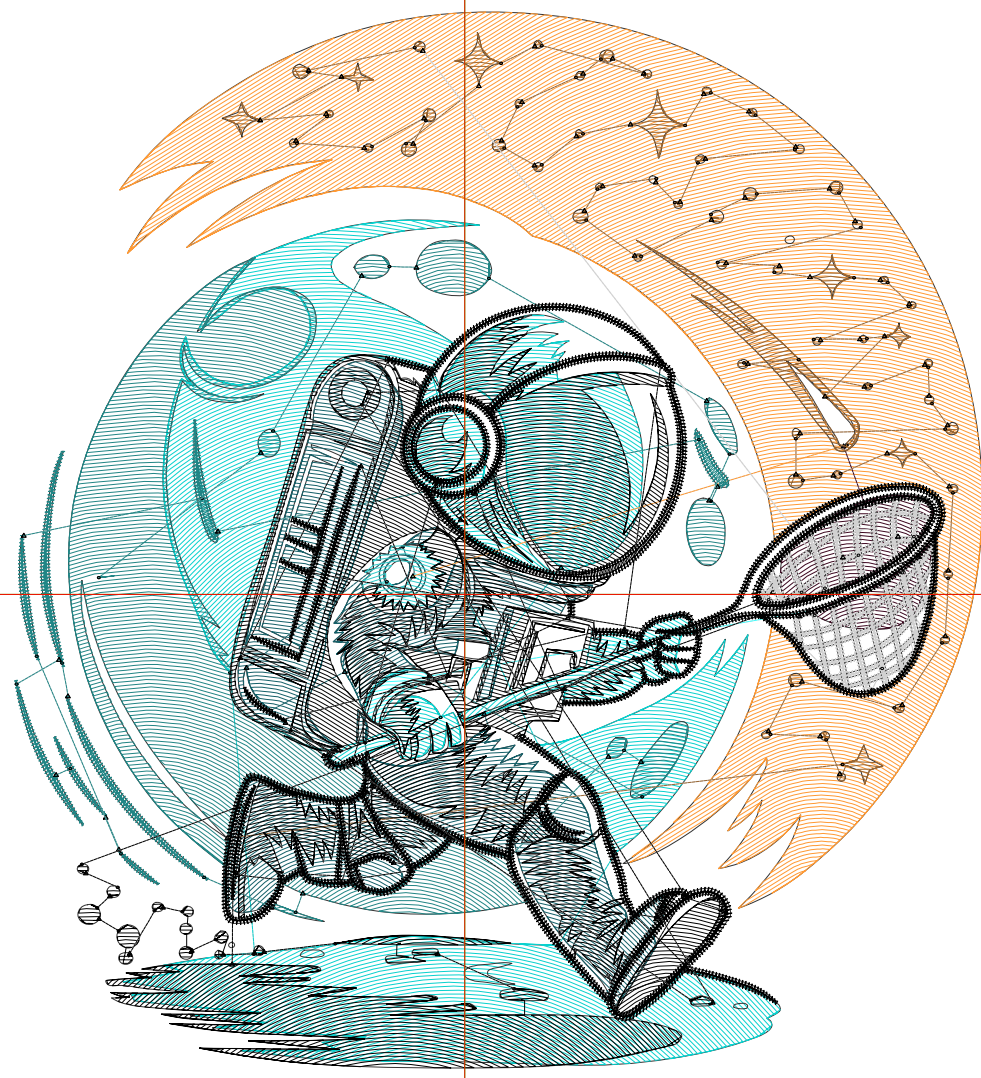
Wilcom EmbroideryStudio - Designing



Design: **5**

Title:

Stitches: 29,001  
Height: 5.50 in  
Width: 5.04 in  
Colors: 10  
Colorway: Colorway 1  
Zoom: 1:1



# Production Worksheet

Wilcom EmbroideryStudio - Designing



Design: **5**

Title:

Stitches: 29,001  
 Height: 5.50 in  
 Width: 5.04 in  
 Colors: 10  
 Colorway: Colorway 1  
 Zoom: 1:1

Machine format: Tajima  
 Color changes: 9  
 Stops: 10  
 Trims: 148  
 Appliqués: 0  
 Left: 59.6 mm  
 Right: 68.4 mm  
 Up: 77.0 mm  
 Down: 62.6 mm  
 EndX: 0.00 in  
 EndY: 0.00 in  
 Area 27.71 in<sup>2</sup>  
 Max stitch: 7.3 mm  
 Min stitch: 0.0 mm  
 Max jump: 6.9 mm  
 Total thread: 380.24ft  
 Total bobbin: 110.62ft

Stop Sequence:

#	N#	Color	St.	Code	Name	Chart
1.	9		3,616		R9 G209 B206	
2.	4		2,245		R21 G96 B105	
3.	5		125	5	Aqua	Default
4.	12		4,426	12	Orange	Default
5.	6		330		R61 G8 B32	
6.	7		64		R64 G255 B255	
7.	2		3,376		R33 G133 B133	
8.	14		1,393	14	Brown	Default
9.	1		1,880		R209 G209 B209	
10.	8		11,544	8	Black	Default

# Production Worksheet

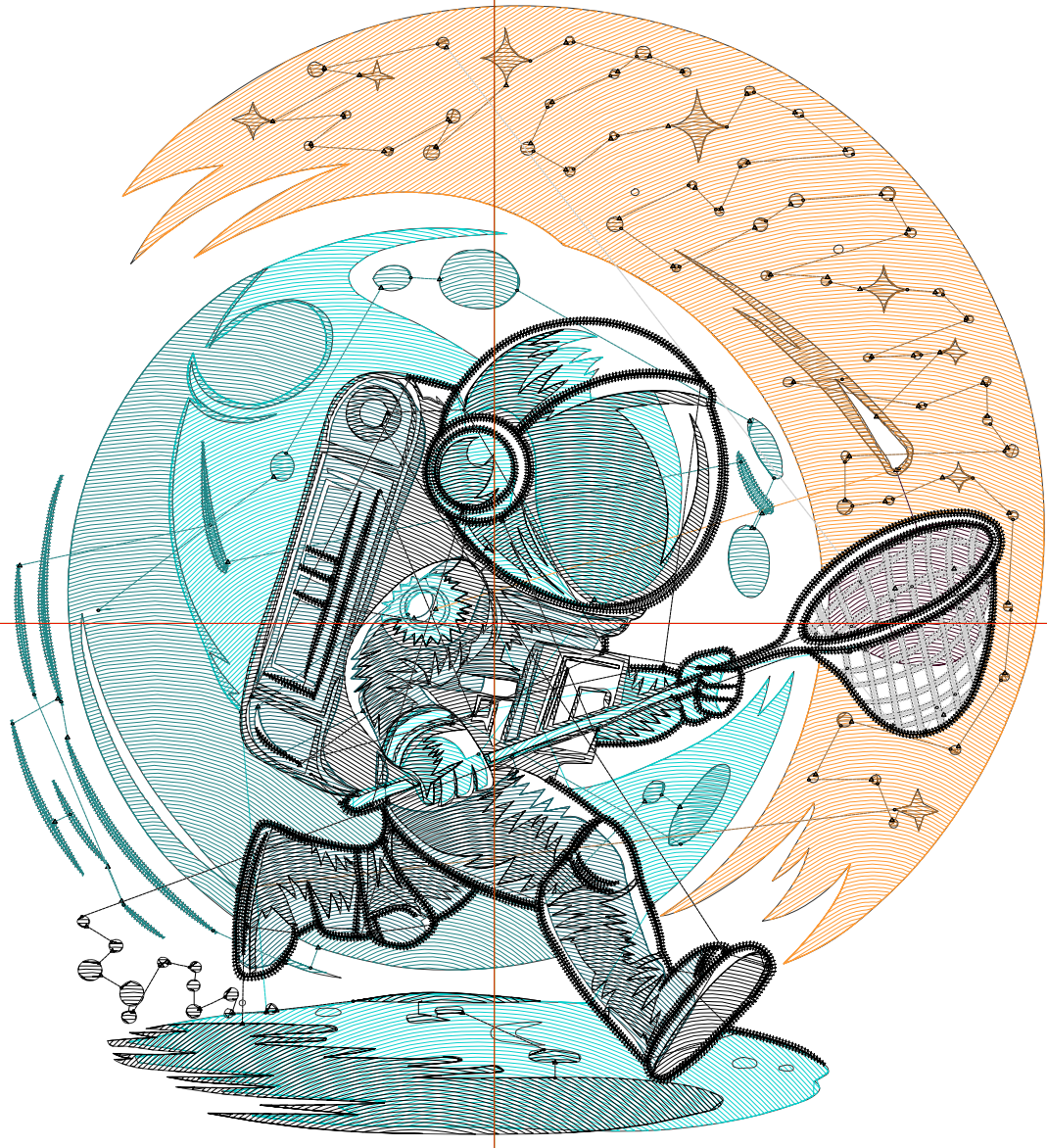
Wilcom EmbroideryStudio - Designing



Design: **6**

Title:

Stitches: 32,551  
Height: 6.00 in  
Width: 5.50 in  
Colors: 10  
Colorway: Colorway 1  
Zoom: 1:1



# Production Worksheet

Wilcom EmbroideryStudio - Designing



Design: **6**

Title:

Stitches: 32,551  
 Height: 6.00 in  
 Width: 5.50 in  
 Colors: 10  
 Colorway: Colorway 1  
 Zoom: 1:1

Machine format: Tajima  
 Color changes: 9  
 Stops: 10  
 Trims: 152  
 Appliqués: 0  
 Left: 65.4 mm  
 Right: 74.2 mm  
 Up: 83.4 mm  
 Down: 69.0 mm  
 EndX: 0.00 in  
 EndY: 0.00 in  
 Area 32.97 in<sup>2</sup>  
 Max stitch: 8.0 mm  
 Min stitch: 0.0 mm  
 Max jump: 7.0 mm  
 Total thread: 433.19ft  
 Total bobbin: 128.19ft

Stop Sequence:

#	N#	Color	St.	Code	Name	Chart
1.	9		4,143		R9 G209 B206	
2.	4		2,509		R21 G96 B105	
3.	5		159	5	Aqua	Default
4.	12		5,164	12	Orange	Default
5.	6		377		R61 G8 B32	
6.	7		71		R64 G255 B255	
7.	2		3,788		R33 G133 B133	
8.	14		1,534	14	Brown	Default
9.	1		2,043		R209 G209 B209	
10.	8		12,761	8	Black	Default

# Production Worksheet

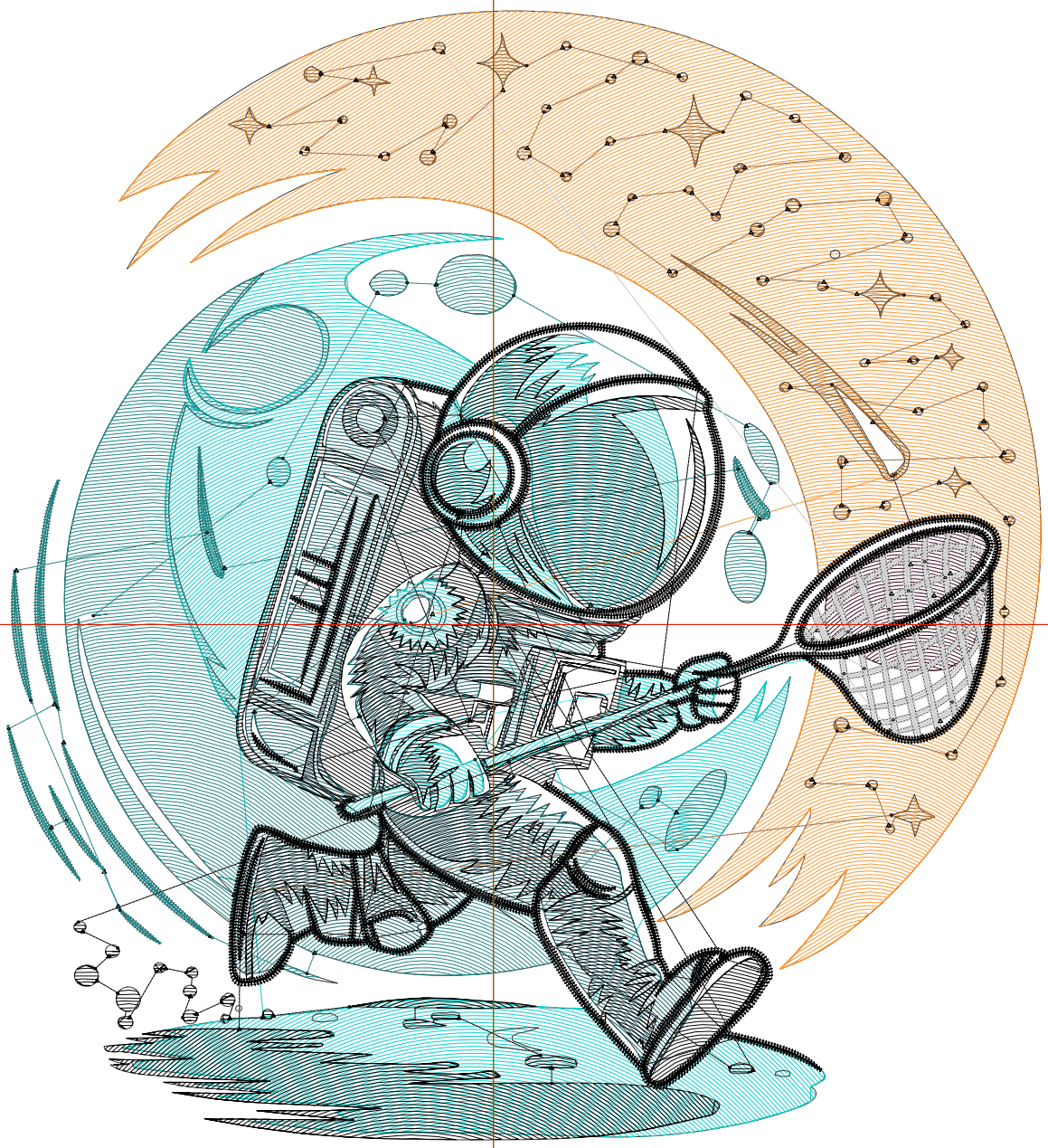
Wilcom EmbroideryStudio - Designing



Design: **6**

Title:

Stitches: 36,443  
Height: 6.50 in  
Width: 5.95 in  
Colors: 10  
Colorway: Colorway 1  
Zoom: 1:1



# Production Worksheet

Wilcom EmbroideryStudio - Designing



Design: **6**

Title:

Stitches: 36,443  
 Height: 6.50 in  
 Width: 5.95 in  
 Colors: 10  
 Colorway: Colorway 1  
 Zoom: 1:1

Machine format: Tajima  
 Color changes: 9  
 Stops: 10  
 Trims: 158  
 Appliqués: 0  
 Left: 71.2 mm  
 Right: 80.1 mm  
 Up: 89.7 mm  
 Down: 75.3 mm  
 EndX: 0.00 in  
 EndY: 0.00 in  
 Area 38.70 in<sup>2</sup>  
 Max stitch: 8.7 mm  
 Min stitch: 0.0 mm  
 Max jump: 7.0 mm  
 Total thread: 491.02ft  
 Total bobbin: 147.33ft

Stop Sequence:

#	N#	Color	St.	Code	Name	Chart
1.	9		4,754		R9 G209 B206	
2.	4		2,861		R21 G96 B105	
3.	5		160	5	Aqua	Default
4.	12		5,981	12	Orange	Default
5.	6		427		R61 G8 B32	
6.	7		83		R64 G255 B255	
7.	2		4,224		R33 G133 B133	
8.	14		1,621	14	Brown	Default
9.	1		2,227		R209 G209 B209	
10.	8		14,103	8	Black	Default

# Production Worksheet

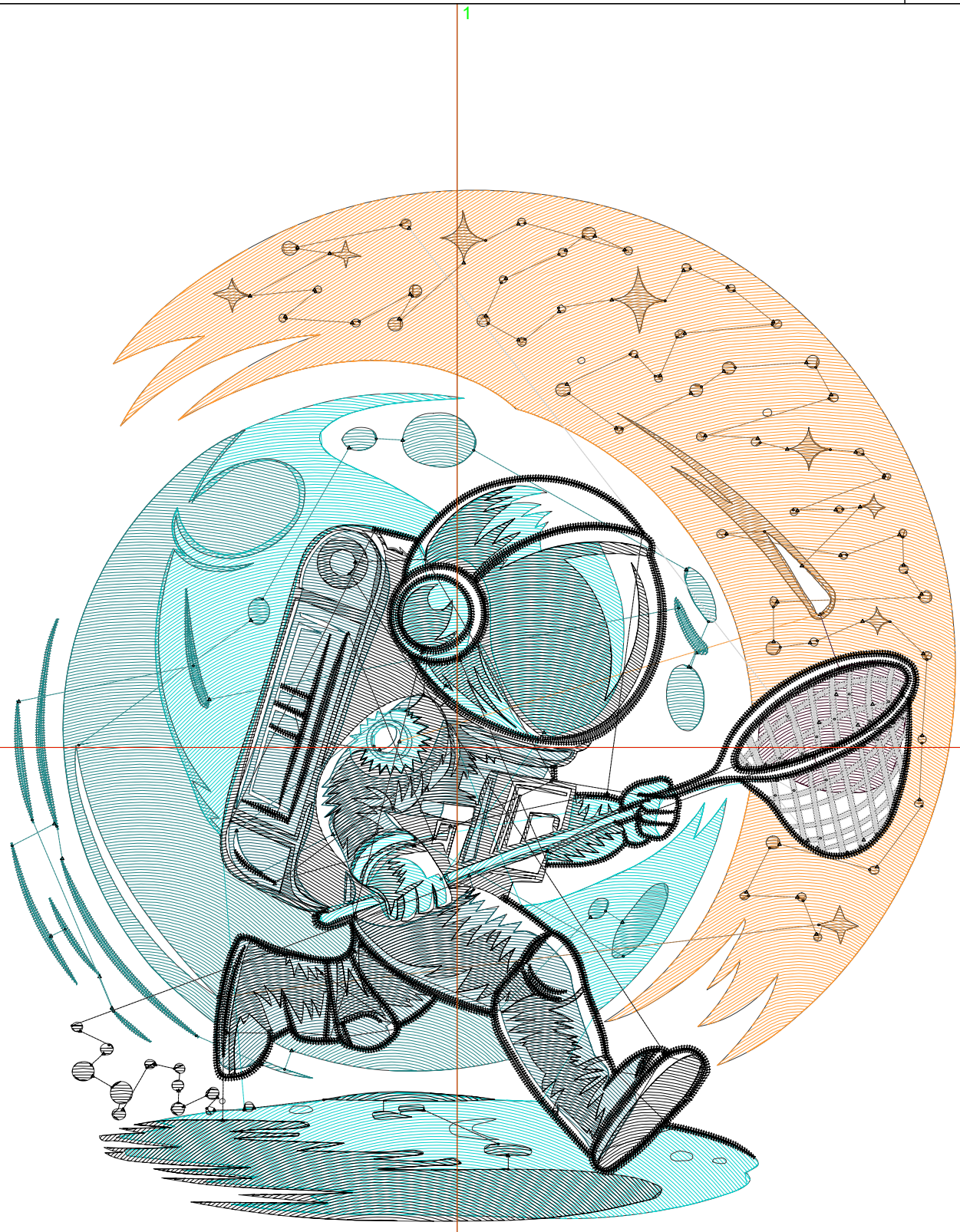
Wilcom EmbroideryStudio - Designing



Design: **7**

Title:

Stitches: 40,345  
Height: 7.00 in  
Width: 6.41 in  
Colors: 10  
Colorway: Colorway 1  
Zoom: 1:1



# Production Worksheet

Wilcom EmbroideryStudio - Designing



Design: **7**

Title:

Stitches: 40,345  
 Height: 7.00 in  
 Width: 6.41 in  
 Colors: 10  
 Colorway: Colorway 1  
 Zoom: 1:1

Machine format: Tajima  
 Color changes: 9  
 Stops: 10  
 Trims: 159  
 Appliqués: 0  
 Left: 77.0 mm  
 Right: 85.9 mm  
 Up: 96.1 mm  
 Down: 81.7 mm  
 EndX: 0.00 in  
 EndY: 0.00 in  
 Area 44.88 in<sup>2</sup>  
 Max stitch: 9.4 mm  
 Min stitch: 0.0 mm  
 Max jump: 6.9 mm  
 Total thread: 550.33ft  
 Total bobbin: 167.30ft

Stop Sequence:

#	N#	Color	St.	Code	Name	Chart
1.	9		5,397		R9 G209 B206	
2.	4		3,229		R21 G96 B105	
3.	5		179	5	Aqua	Default
4.	12		6,824	12	Orange	Default
5.	6		476		R61 G8 B32	
6.	7		89		R64 G255 B255	
7.	2		4,819		R33 G133 B133	
8.	14		1,726	14	Brown	Default
9.	1		2,387		R209 G209 B209	
10.	8		15,217	8	Black	Default

# Production Worksheet

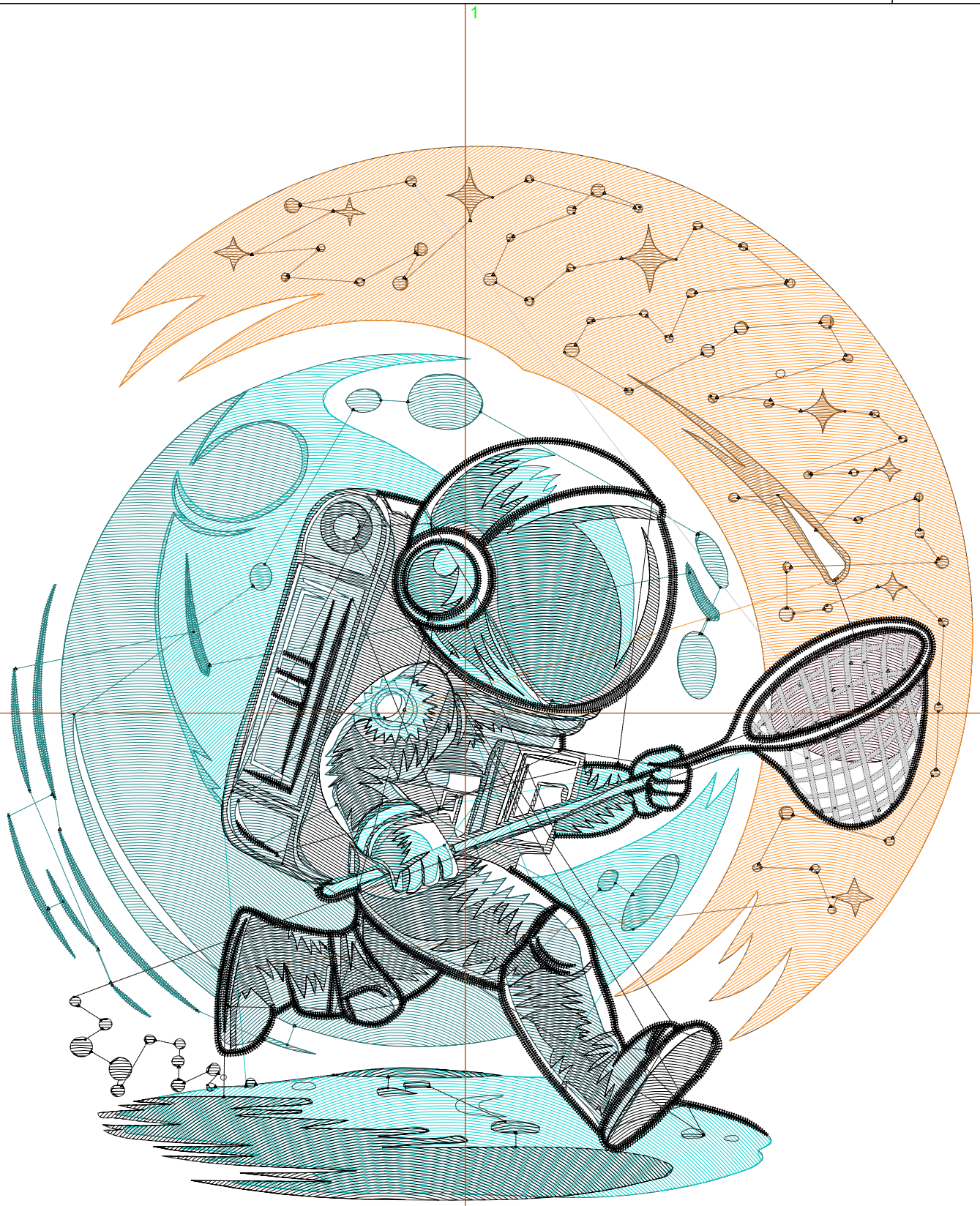
Wilcom EmbroideryStudio - Designing



Design: **7**

Title:

Stitches: 44,870  
Height: 7.50 in  
Width: 6.87 in  
Colors: 10  
Colorway: Colorway 1  
Zoom: 1:1



# Production Worksheet

Wilcom EmbroideryStudio - Designing



Design: **7**

Title:

Stitches: 44,870  
 Height: 7.50 in  
 Width: 6.87 in  
 Colors: 10  
 Colorway: Colorway 1  
 Zoom: 1:1

Machine format: Tajima  
 Color changes: 9  
 Stops: 10  
 Trims: 162  
 Appliqués: 0  
 Left: 82.8 mm  
 Right: 91.7 mm  
 Up: 102.4 mm  
 Down: 88.0 mm  
 EndX: 0.00 in  
 EndY: 0.00 in  
 Area 51.51 in<sup>2</sup>  
 Max stitch: 10.0 mm  
 Min stitch: 0.0 mm  
 Max jump: 7.0 mm  
 Total thread: 618.56ft  
 Total bobbin: 190.13ft

Stop Sequence:

#	N#	Color	St.	Code	Name	Chart
1.	9		6,091		R9 G209 B206	
2.	4		3,712		R21 G96 B105	
3.	5		190	5	Aqua	Default
4.	12		7,770	12	Orange	Default
5.	6		548		R61 G8 B32	
6.	7		97		R64 G255 B255	
7.	2		5,404		R33 G133 B133	
8.	14		1,891	14	Brown	Default
9.	1		2,534		R209 G209 B209	
10.	8		16,631	8	Black	Default