

Production Worksheet

Wilcom EmbroideryStudio - Designing



Design: **3**

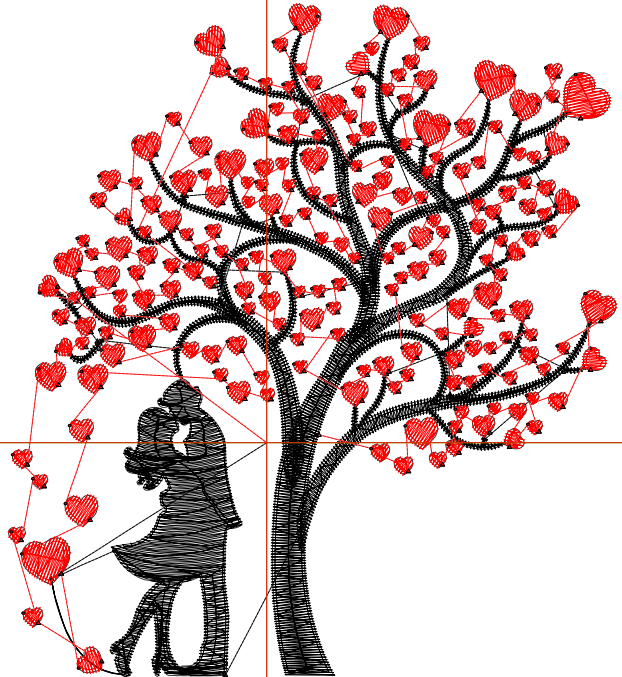
Title:

Stitches: 13,736
 Height: 3.50 in
 Width: 3.17 in
 Colors: 2
 Colorway: Colorway 1
 Zoom: 1:1

Machine format: Tajima
 Color changes: 1
 Stops: 2
 Trims: 204
 Appliqués: 0
 Left: 34.2 mm
 Right: 46.3 mm
 Up: 58.1 mm
 Down: 30.9 mm
 EndX: 0.00 in
 EndY: 0.00 in
 Area: 11.11 in²
 Max stitch: 7.0 mm
 Min stitch: 0.0 mm
 Max jump: 6.9 mm
 Total thread: 170.18ft
 Total bobbin: 47.05ft

Stop Sequence:

#	N#	Color	St.	Code	Name	Chart
1.	8		6,364	8	Black	Default
2.	3		7,370	3	Red	Default



Production Worksheet

Wilcom EmbroideryStudio - Designing



Design: **4**

Title:

Stitches: 16,869
 Height: 4.50 in
 Width: 4.07 in
 Colors: 2
 Colorway: Colorway 1
 Zoom: 1:1

Machine format: Tajima
 Color changes: 1
 Stops: 2
 Trims: 223
 Appliqués: 0
 Left: 45.7 mm
 Right: 57.8 mm
 Up: 70.9 mm
 Down: 43.6 mm
 EndX: 0.00 in
 EndY: 0.00 in
 Area: 18.35 in²
 Max stitch: 8.9 mm
 Min stitch: 0.0 mm
 Max jump: 7.0 mm
 Total thread: 231.47ft
 Total bobbin: 71.19ft

Stop Sequence:

#	N#	Color	St.	Code	Name	Chart
1.	8		8,409	8	Black	Default
2.	3		8,458	3	Red	Default



Production Worksheet

Wilcom EmbroideryStudio - Designing



Design: **5**

Title:

Stitches: 20,545
 Height: 5.50 in
 Width: 4.98 in
 Colors: 2
 Colorway: Colorway 1
 Zoom: 1:1

Machine format: Tajima
 Color changes: 1
 Stops: 2
 Trims: 230
 Appliqués: 0
 Left: 57.2 mm
 Right: 69.3 mm
 Up: 83.5 mm
 Down: 56.2 mm
 EndX: 0.00 in
 EndY: 0.00 in
 Area: 27.37 in²
 Max stitch: 11.3 mm
 Min stitch: 0.0 mm
 Max jump: 6.9 mm
 Total thread: 306.45ft
 Total bobbin: 101.32ft

Stop Sequence:

#	N#	Color	St.	Code	Name	Chart
1.	8		10,664	8	Black	Default
2.	3		9,879	3	Red	Default



Production Worksheet

Wilcom EmbroideryStudio - Designing



Design: **6**

Title:

Stitches: 24,139
Height: 6.50 in
Width: 5.88 in
Colors: 2
Colorway: Colorway 1
Zoom: 1:1



Production Worksheet

Wilcom EmbroideryStudio - Designing



Design: **6**

Title:

Stitches: 24,139
 Height: 6.50 in
 Width: 5.88 in
 Colors: 2
 Colorway: Colorway 1
 Zoom: 1:1

Machine format: Tajima
 Color changes: 1
 Stops: 2
 Trims: 232
 Appliqués: 0
 Left: 68.6 mm
 Right: 80.7 mm
 Up: 96.2 mm
 Down: 68.9 mm
 EndX: 0.00 in
 EndY: 0.00 in
 Area 38.23 in²
 Max stitch: 12.0 mm
 Min stitch: 0.0 mm
 Max jump: 6.7 mm
 Total thread: 388.81ft
 Total bobbin: 136.16ft

Stop Sequence:

#	N#	Color	St.	Code	Name	Chart
1.	8		13,140	8	Black	Default
2.	3		10,997	3	Red	Default

Production Worksheet

Wilcom EmbroideryStudio - Designing



Design: **7**

Title:

Stitches: 28,366
Height: 7.50 in
Width: 6.78 in
Colors: 2
Colorway: Colorway 1
Zoom: 1:1



Production Worksheet

Wilcom EmbroideryStudio - Designing



Design: **7**

Title:

Stitches: 28,366
 Height: 7.50 in
 Width: 6.78 in
 Colors: 2
 Colorway: Colorway 1
 Zoom: 1:1

Machine format: Tajima
 Color changes: 1
 Stops: 2
 Trims: 235
 Appliqués: 0
 Left: 80.1 mm
 Right: 92.2 mm
 Up: 108.9 mm
 Down: 81.7 mm
 EndX: 0.00 in
 EndY: 0.00 in
 Area 50.91 in²
 Max stitch: 12.1 mm
 Min stitch: 0.0 mm
 Max jump: 7.0 mm
 Total thread: 486.70ft
 Total bobbin: 177.73ft

Stop Sequence:

#	N#	Color	St.	Code	Name	Chart
1.	8		15,439	8	Black	Default
2.	3		12,925	3	Red	Default