

Production Worksheet

Wilcom EmbroideryStudio - Designing



Design: **2**

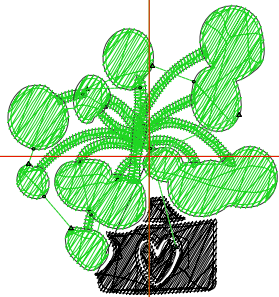
Title:

Stitches: 2,483
 Height: 1.51 in
 Width: 1.40 in
 Colors: 2
 Colorway: Colorway 1
 Zoom: 1:1

Machine format: Tajima
 Color changes: 1
 Stops: 2
 Trims: 11
 Appliqués: 0
 Left: 18.7 mm
 Right: 17.0 mm
 Up: 20.0 mm
 Down: 18.3 mm
 EndX: 0.00 in
 EndY: 0.00 in
 Area 2.12 in²
 Max stitch: 5.2 mm
 Min stitch: 0.2 mm
 Max jump: 5.2 mm
 Total thread: 36.67ft
 Total bobbin: 11.69ft

Stop Sequence:

| # | N# | Color | St. | Code | Name | Chart |
|----|----|-------|-------|------|--------------|---------|
| 1. | 8 | | 598 | 8 | Black | Default |
| 2. | 3 | | 1,883 | | R31 G214 B34 | |



Production Worksheet

Wilcom EmbroideryStudio - Designing



Design: **3**

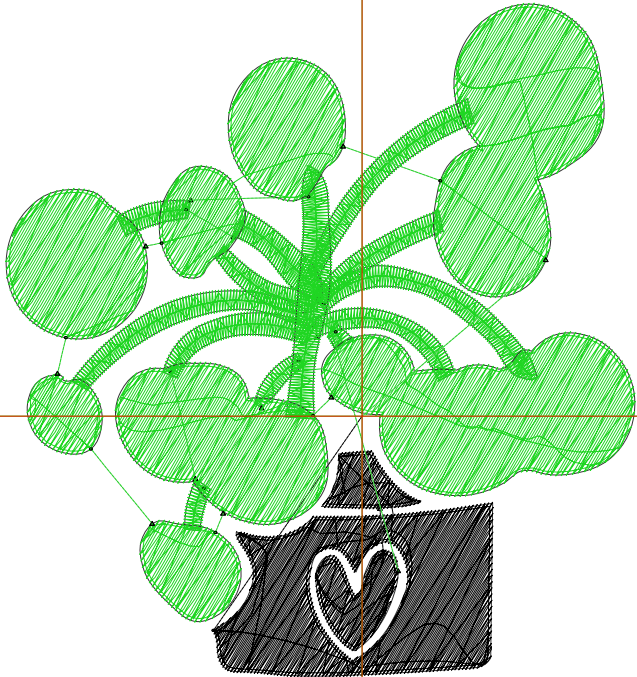
Title:

Stitches: 7,232
 Height: 3.51 in
 Width: 3.28 in
 Colors: 2
 Colorway: Colorway 1
 Zoom: 1:1

Machine format: Tajima
 Color changes: 1
 Stops: 2
 Trims: 15
 Appliqués: 0
 Left: 47.1 mm
 Right: 36.1 mm
 Up: 54.6 mm
 Down: 34.5 mm
 EndX: 0.00 in
 EndY: 0.00 in
 Area 11.50 in²
 Max stitch: 5.9 mm
 Min stitch: 0.3 mm
 Max jump: 6.1 mm
 Total thread: 138.99ft
 Total bobbin: 53.86ft

Stop Sequence:

| # | N# | Color | St. | Code | Name | Chart |
|----|----|-------|-------|------|--------------|---------|
| 1. | 8 | | 1,751 | 8 | Black | Default |
| 2. | 3 | | 5,479 | | R31 G214 B34 | |



Production Worksheet

Wilcom EmbroideryStudio - Designing



Design: **4**

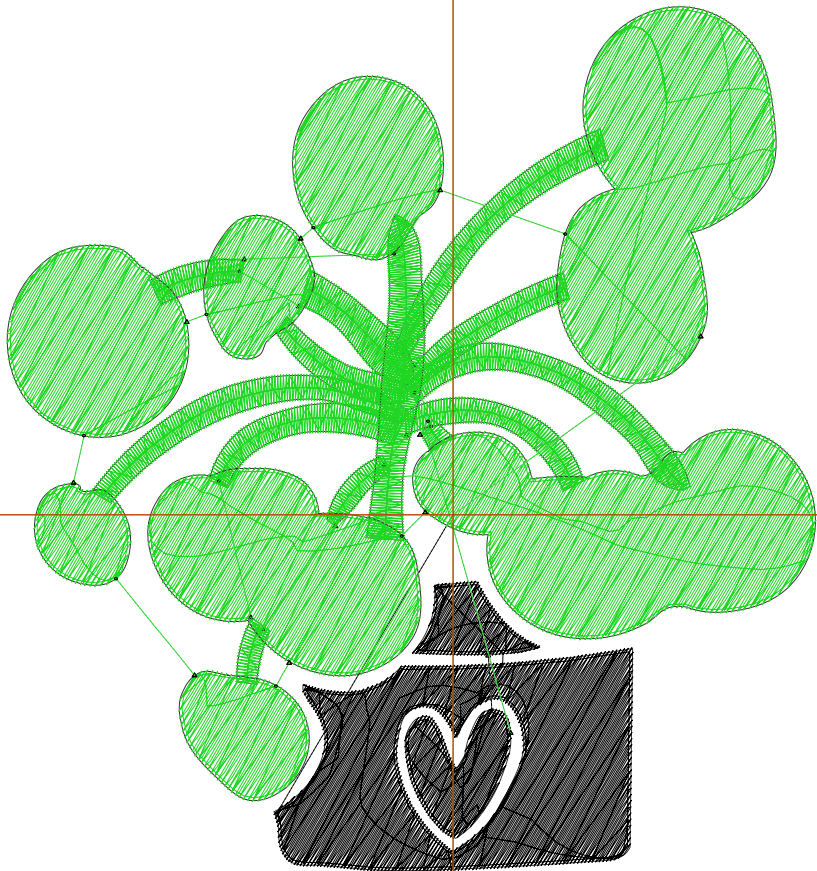
Title:

Stitches: 10,534
 Height: 4.51 in
 Width: 4.21 in
 Colors: 2
 Colorway: Colorway 1
 Zoom: 1:1

Machine format: Tajima
 Color changes: 1
 Stops: 2
 Trims: 18
 Appliqués: 0
 Left: 59.0 mm
 Right: 48.0 mm
 Up: 67.3 mm
 Down: 47.2 mm
 EndX: 0.00 in
 EndY: 0.00 in
 Area 19.00 in²
 Max stitch: 6.6 mm
 Min stitch: 0.0 mm
 Max jump: 6.6 mm
 Total thread: 217.28ft
 Total bobbin: 87.41ft

Stop Sequence:

| # | N# | Color | St. | Code | Name | Chart |
|----|----|-------|-------|------|--------------|---------|
| 1. | 8 | | 2,575 | 8 | Black | Default |
| 2. | 3 | | 7,957 | | R31 G214 B34 | |



Production Worksheet

Wilcom EmbroideryStudio - Designing



Design: **5**

Title:

Stitches: 14,365
 Height: 5.51 in
 Width: 5.15 in
 Colors: 2
 Colorway: Colorway 1
 Zoom: 1:1

Machine format: Tajima
 Color changes: 1
 Stops: 2
 Trims: 18
 Appliqués: 0
 Left: 70.9 mm
 Right: 59.9 mm
 Up: 80.0 mm
 Down: 59.9 mm
 EndX: 0.00 in
 EndY: 0.00 in
 Area: 28.37 in²
 Max stitch: 6.9 mm
 Min stitch: 0.0 mm
 Max jump: 6.9 mm
 Total thread: 312.45ft
 Total bobbin: 128.91ft

Stop Sequence:

| # | N# | Color | St. | Code | Name | Chart |
|----|----|-------|--------|------|--------------|---------|
| 1. | 8 | | 3,553 | 8 | Black | Default |
| 2. | 3 | | 10,810 | | R31 G214 B34 | |

