

Production Worksheet

Wilcom EmbroideryStudio - Designing



Design: **3**

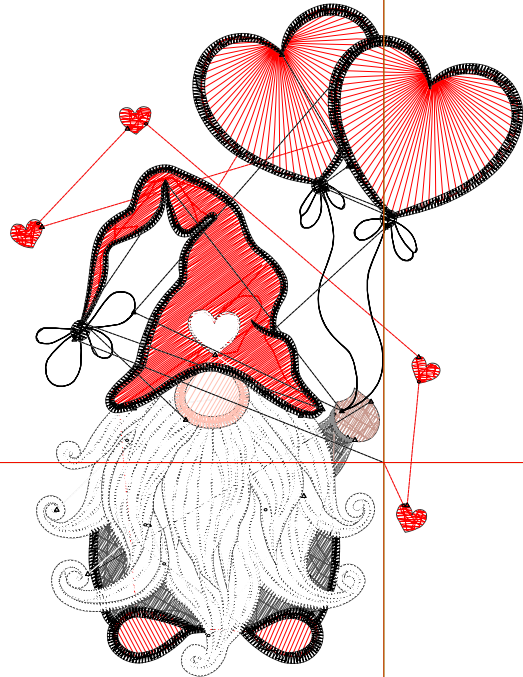
Title:

Stitches: 12,636
 Height: 3.50 in
 Width: 2.67 in
 Colors: 7
 Colorway: Colorway 1
 Zoom: 1:1

Machine format: Tajima
 Color changes: 7
 Stops: 8
 Trims: 39
 Appliqués: 0
 Left: 49.3 mm
 Right: 18.4 mm
 Up: 60.6 mm
 Down: 28.3 mm
 EndX: 0.00 in
 EndY: 0.00 in
 Area: 9.33 in²
 Max stitch: 7.8 mm
 Min stitch: 0.0 mm
 Max jump: 6.9 mm
 Total thread: 161.01ft
 Total bobbin: 44.73ft

Stop Sequence:

#	N#	Color	St.	Code	Name	Chart
1.	5		1,927		R255 G0 B0	
2.	2		581		R84 G84 B84	
3.	4		111		R201 G154 B143	
4.	8		585	8	Black	Default
5.	3		130		R143 G143 B143	
6.	9		6,602	9	White	Default
7.	1		216		R255 G194 B181	
8.	8		2,482	8	Black	Default



Production Worksheet

Wilcom EmbroideryStudio - Designing



Design: **4**

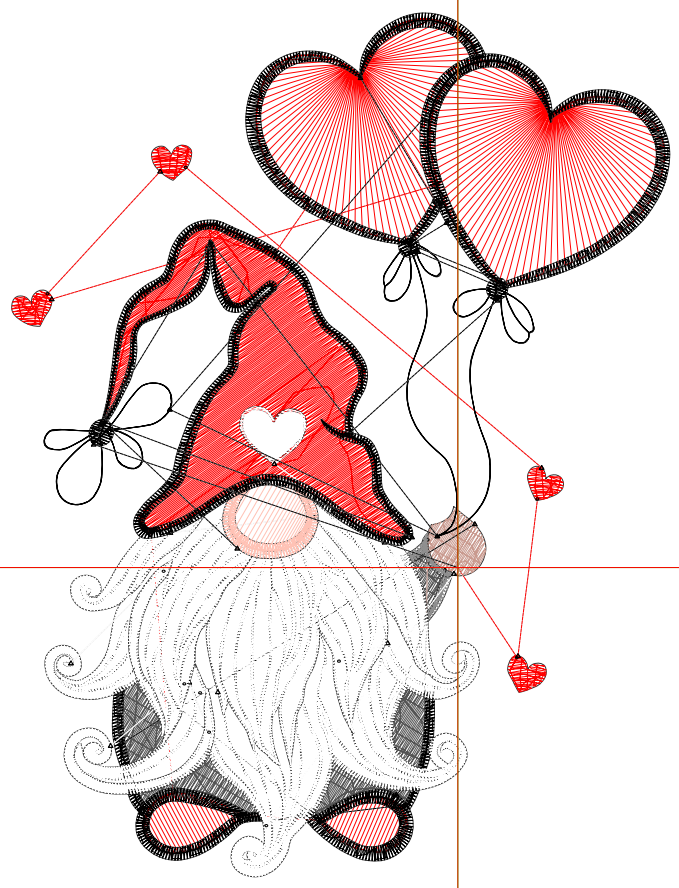
Title:

Stitches: 16,863
 Height: 4.50 in
 Width: 3.43 in
 Colors: 7
 Colorway: Colorway 1
 Zoom: 1:1

Machine format: Tajima
 Color changes: 7
 Stops: 8
 Trims: 40
 Appliqués: 0
 Left: 59.0 mm
 Right: 28.0 mm
 Up: 73.3 mm
 Down: 40.9 mm
 EndX: 0.00 in
 EndY: 0.00 in
 Area: 15.42 in²
 Max stitch: 10.2 mm
 Min stitch: 0.0 mm
 Max jump: 6.9 mm
 Total thread: 233.08ft
 Total bobbin: 71.00ft

Stop Sequence:

#	N#	Color	St.	Code	Name	Chart
1.	5		2,775		R255 G0 B0	
2.	2		759		R84 G84 B84	
3.	4		144		R201 G154 B143	
4.	8		777	8	Black	Default
5.	3		160		R143 G143 B143	
6.	9		8,739	9	White	Default
7.	1		291		R255 G194 B181	
8.	8		3,216	8	Black	Default



1 2

2

Production Worksheet

Wilcom EmbroideryStudio - Designing



Design: **5**

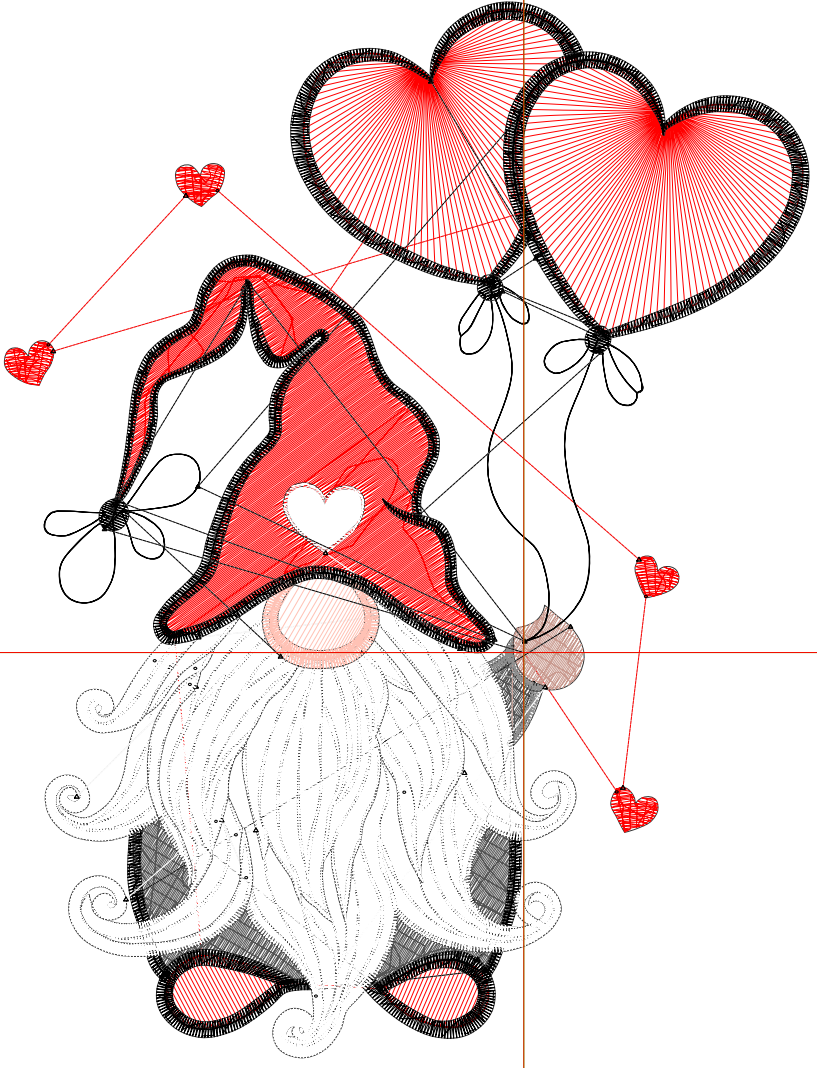
Title:

Stitches: 21,391
 Height: 5.50 in
 Width: 4.19 in
 Colors: 7
 Colorway: Colorway 1
 Zoom: 1:1

Machine format: Tajima
 Color changes: 7
 Stops: 8
 Trims: 43
 Appliqués: 0
 Left: 68.7 mm
 Right: 37.7 mm
 Up: 86.0 mm
 Down: 53.6 mm
 EndX: 0.00 in
 EndY: 0.00 in
 Area: 23.03 in²
 Max stitch: 11.8 mm
 Min stitch: 0.0 mm
 Max jump: 7.0 mm
 Total thread: 318.13ft
 Total bobbin: 103.79ft

Stop Sequence:

#	N#	Color	St.	Code	Name	Chart
1.	5		3,841	R255	G0 B0	
2.	2		1,006	R84	G84 B84	
3.	4		204	R201	G154 B143	
4.	8		919	8	Black	Default
5.	3		193	R143	G143 B143	
6.	9		10,914	9	White	Default
7.	1		374	R255	G194 B181	
8.	8		3,938	8	Black	Default



Production Worksheet

Wilcom EmbroideryStudio - Designing



Design: **6**

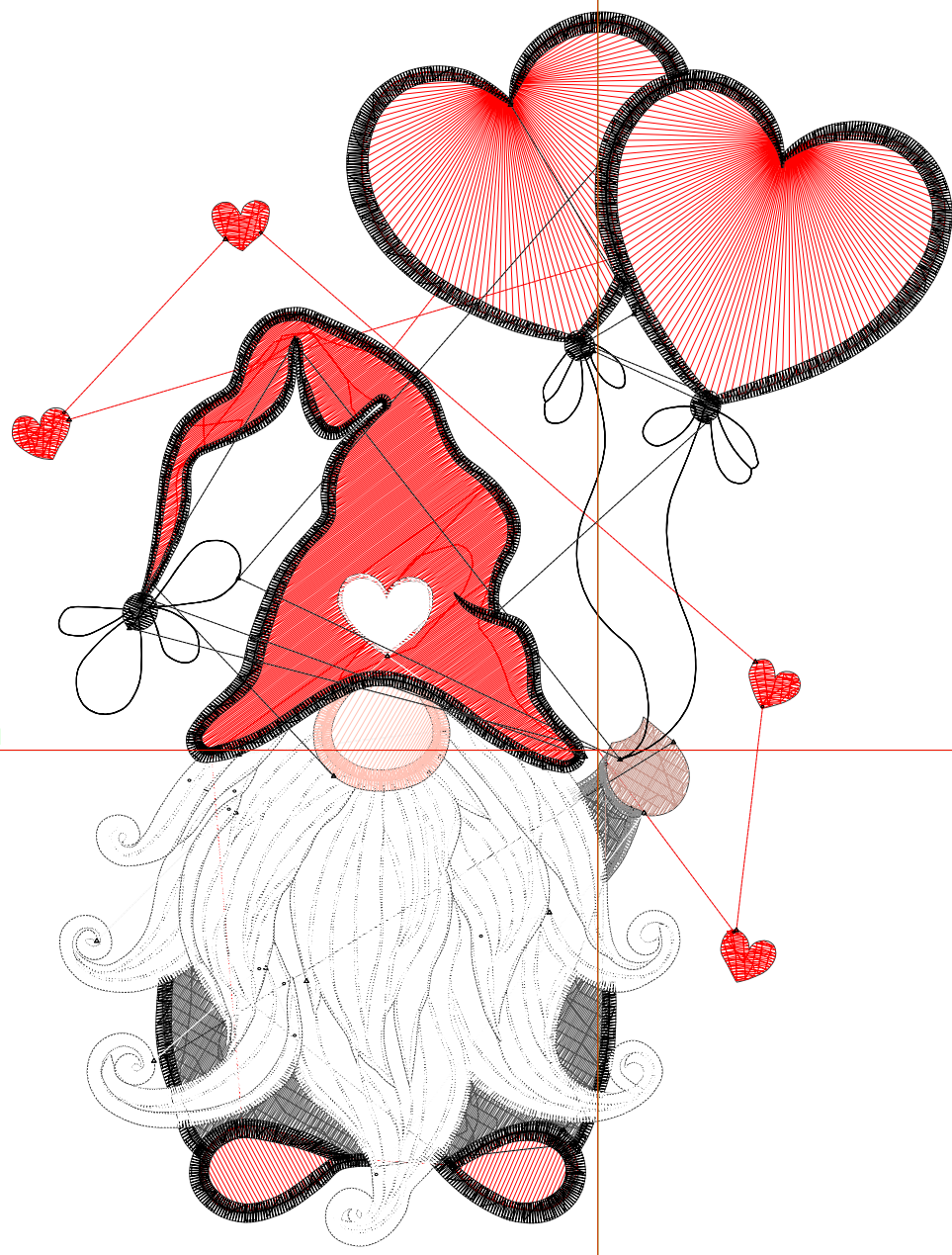
Title:

Stitches: 26,130
 Height: 6.50 in
 Width: 4.95 in
 Colors: 7
 Colorway: Colorway 1
 Zoom: 1:1

Machine format: Tajima
 Color changes: 7
 Stops: 8
 Trims: 43
 Appliqués: 0
 Left: 78.3 mm
 Right: 47.4 mm
 Up: 98.7 mm
 Down: 66.3 mm
 EndX: 0.00 in
 EndY: 0.00 in
 Area: 32.17 in²
 Max stitch: 7.0 mm
 Min stitch: 0.0 mm
 Max jump: 7.0 mm
 Total thread: 415.92ft
 Total bobbin: 143.31ft

Stop Sequence:

#	N#	Color	St.	Code	Name	Chart
1.	5		4,979		R255 G0 B0	
2.	2		1,282		R84 G84 B84	
3.	4		256		R201 G154 B143	
4.	8		1,092	8	Black	Default
5.	3		222		R143 G143 B143	
6.	9		13,160	9	White	Default
7.	1		460		R255 G194 B181	
8.	8		4,677	8	Black	Default



Production Worksheet

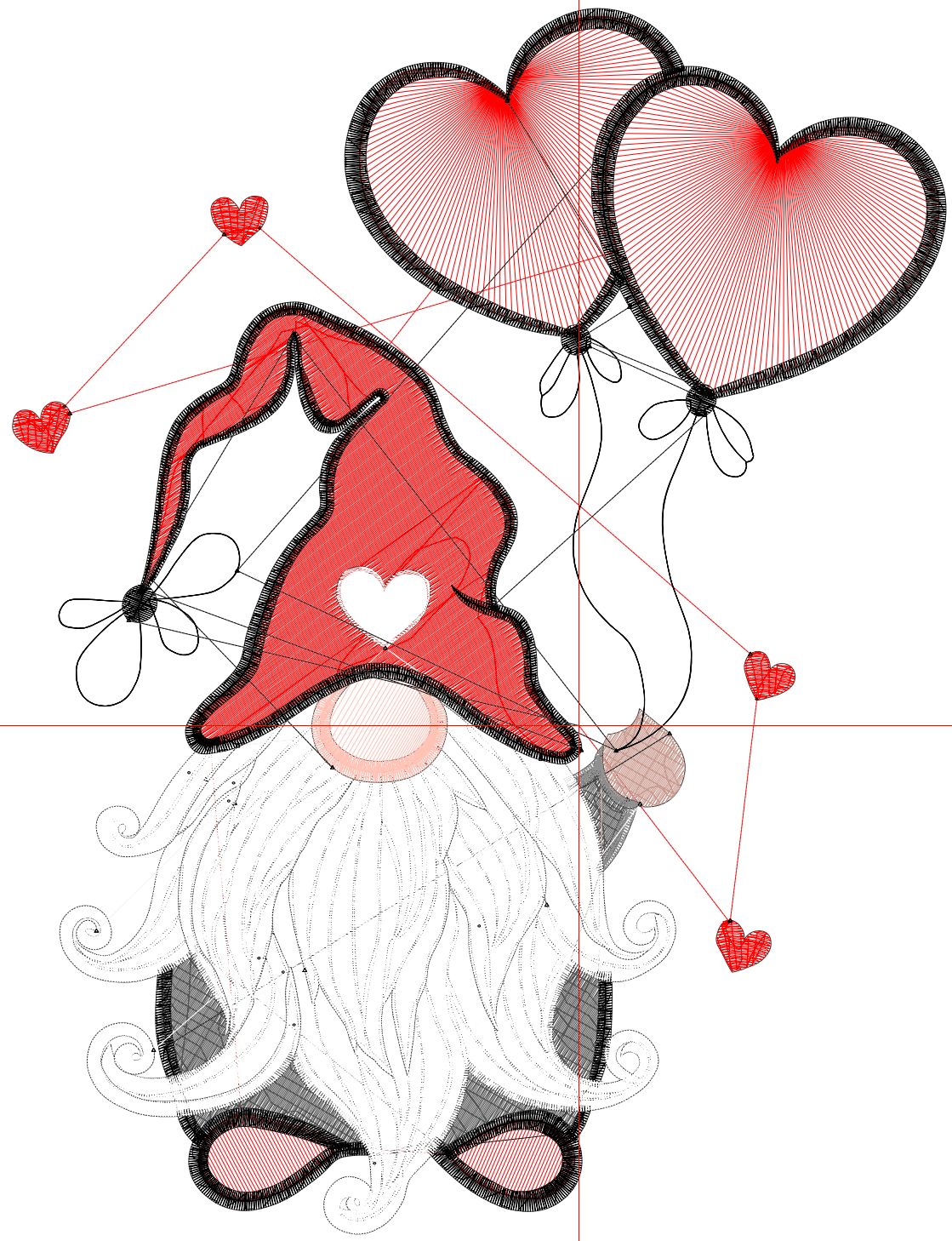
Wilcom EmbroideryStudio - Designing



Design: **7**

Title:

Stitches: 31,184
Height: 7.50 in
Width: 5.71 in
Colors: 7
Colorway: Colorway 1
Zoom: 1:1



Production Worksheet

Wilcom EmbroideryStudio - Designing



Design: **7**

Title:

Stitches: 31,184
 Height: 7.50 in
 Width: 5.71 in
 Colors: 7
 Colorway: Colorway 1
 Zoom: 1:1

Machine format: Tajima
 Color changes: 7
 Stops: 8
 Trims: 43
 Appliqués: 0
 Left: 88.0 mm
 Right: 57.1 mm
 Up: 111.4 mm
 Down: 79.1 mm
 EndX: 0.00 in
 EndY: 0.00 in
 Area 42.84 in²
 Max stitch: 7.0 mm
 Min stitch: 0.0 mm
 Max jump: 7.0 mm
 Total thread: 527.58ft
 Total bobbin: 189.83ft

Stop Sequence:

#	N#	Color	St.	Code	Name	Chart
1.	5		6,338		R255 G0 B0	
2.	2		1,556		R84 G84 B84	
3.	4		327		R201 G154 B143	
4.	8		1,284	8	Black	Default
5.	3		261		R143 G143 B143	
6.	9		15,461	9	White	Default
7.	1		542		R255 G194 B181	
8.	8		5,413	8	Black	Default