

Production Worksheet

Wilcom EmbroideryStudio - Designing



Design: **3**

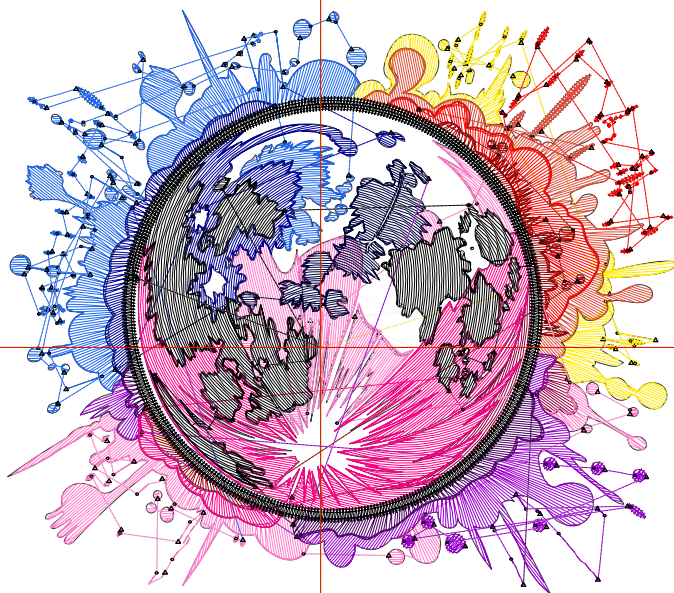
Title:

Stitches: 18,772
 Height: 3.04 in
 Width: 3.49 in
 Colors: 14
 Colorway: Colorway 1
 Zoom: 1:1

Machine format: Tajima
 Color changes: 13
 Stops: 14
 Trims: 168
 Appliqués: 0
 Left: 41.0 mm
 Right: 47.5 mm
 Up: 44.6 mm
 Down: 32.5 mm
 EndX: 0.00 in
 EndY: 0.00 in
 Area: 10.59 in²
 Max stitch: 10.5 mm
 Min stitch: 0.0 mm
 Max jump: 6.9 mm
 Total thread: 229.91ft
 Total bobbin: 60.53ft

Stop Sequence:

#	N#	Color	St.	Code	Name	Chart
1.	4		999		R255 G234 B1	
2.	9		2,802		R255 G255 B255	
3.	5		825		R224 G77 B61	
4.	3		1,081	3	Red	Default
5.	11		539	11	Dark Red	Default
6.	7		281		R153 G0 B64	
7.	15		1,962	15	Pink	Default
8.	14		2,353		R31 G103 B237	
9.	10		1,024	10	Dark Blue	Default
10.	2		714		R0 G0 B61	
11.	13		970	13	Purple	Default
12.	6		380		R73 G0 B97	
13.	8		2,003		R255 G1 B136	
14.	12		2,837		R0 G0 B0	



Production Worksheet

Wilcom EmbroideryStudio - Designing



Design: **4**

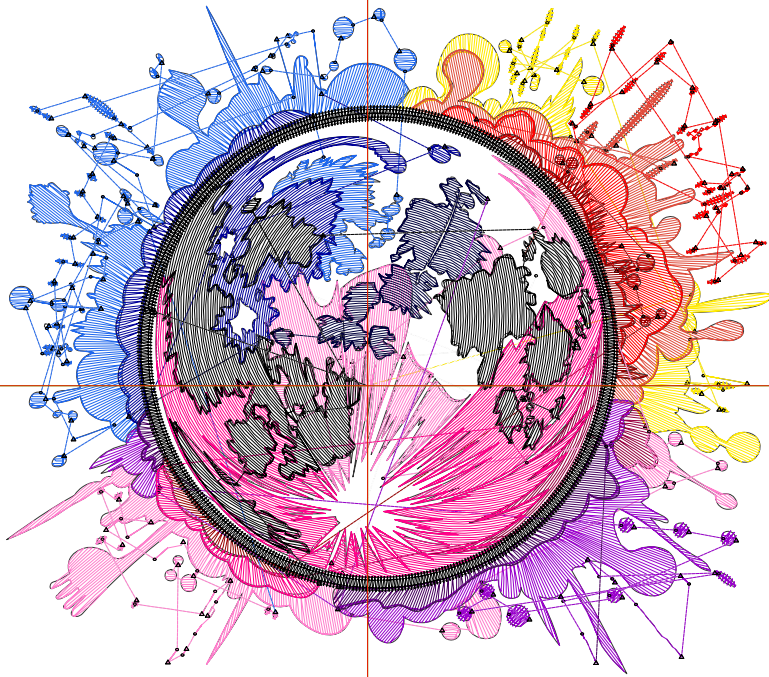
Title:

Stitches: 21,695
 Height: 3.46 in
 Width: 3.98 in
 Colors: 14
 Colorway: Colorway 1
 Zoom: 1:1

Machine format: Tajima
 Color changes: 13
 Stops: 14
 Trims: 173
 Appliqués: 0
 Left: 47.4 mm
 Right: 53.8 mm
 Up: 50.2 mm
 Down: 37.8 mm
 EndX: 0.00 in
 EndY: 0.00 in
 Area: 13.80 in²
 Max stitch: 6.9 mm
 Min stitch: 0.0 mm
 Max jump: 6.9 mm
 Total thread: 273.44ft
 Total bobbin: 74.96ft

Stop Sequence:

#	N#	Color	St.	Code	Name	Chart
1.	4		1,128		R255 G234 B1	
2.	9		3,298		R255 G255 B255	
3.	5		939		R224 G77 B61	
4.	3		1,170	3	Red	Default
5.	11		633	11	Dark Red	Default
6.	7		330		R153 G0 B64	
7.	15		2,226	15	Pink	Default
8.	14		2,611		R31 G103 B237	
9.	10		1,211	10	Dark Blue	Default
10.	2		804		R0 G0 B61	
11.	13		1,102	13	Purple	Default
12.	6		444		R73 G0 B97	
13.	8		2,414		R255 G1 B136	
14.	12		3,383		R0 G0 B0	



Production Worksheet

Wilcom EmbroideryStudio - Designing



Design: **4**

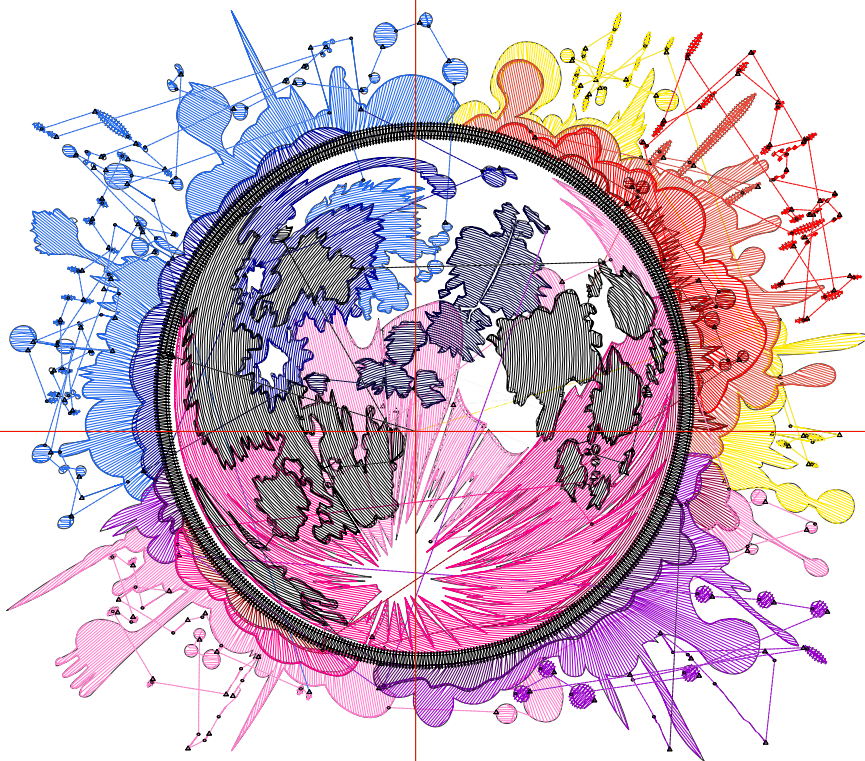
Title:

Stitches: 24,904
Height: 3.89 in
Width: 4.49 in
Colors: 14
Colorway: Colorway 1
Zoom: 1:1

Machine format: Tajima
Color changes: 13
Stops: 14
Trims: 180
Appliqués: 0
Left: 53.8 mm
Right: 60.2 mm
Up: 55.7 mm
Down: 43.1 mm
EndX: 0.00 in
EndY: 0.00 in
Area: 17.45 in²
Max stitch: 6.9 mm
Min stitch: 0.0 mm
Max jump: 6.9 mm
Total thread: 322.54ft
Total bobbin: 91.58ft

Stop Sequence:

#	N#	Color	St.	Code	Name	Chart
1.	4		1,259	R255	G234 B1	
2.	9		3,857	R255	G255 B255	
3.	5		1,072	R224	G77 B61	
4.	3		1,267	3	Red	Default
5.	11		745	11	Dark Red	Default
6.	7		397	R153	G0 B64	
7.	15		2,559	15	Pink	Default
8.	14		2,877	R31	G103 B237	
9.	10		1,406	10	Dark Blue	Default
10.	2		953	R0	G0 B61	
11.	13		1,251	13	Purple	Default
12.	6		516	R73	G0 B97	
13.	8		2,798	R255	G1 B136	
14.	12		3,945	R0	G0 B0	



Production Worksheet

Wilcom EmbroideryStudio - Designing



Design: **5**

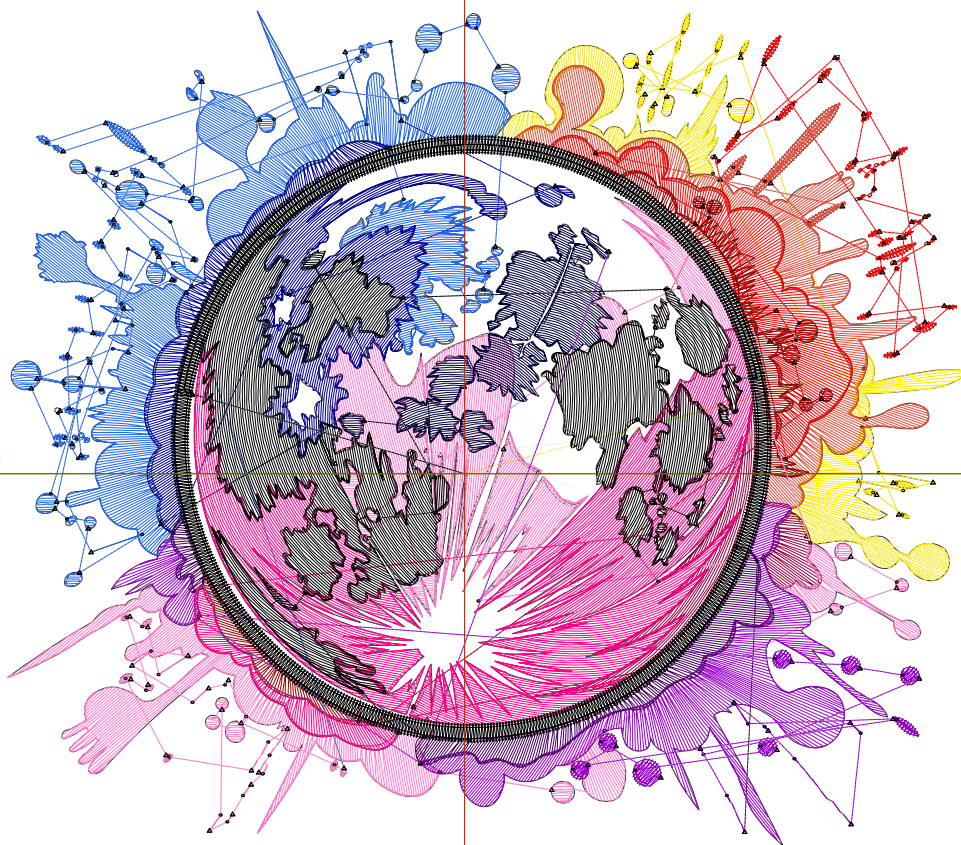
Title:

Stitches: 28,310
Height: 4.32 in
Width: 5.00 in
Colors: 14
Colorway: Colorway 1
Zoom: 1:1

Machine format: Tajima
Color changes: 13
Stops: 14
Trims: 185
Appliqués: 0
Left: 60.5 mm
Right: 66.6 mm
Up: 61.2 mm
Down: 48.4 mm
EndX: 0.00 in
EndY: 0.00 in
Area: 21.58 in²
Max stitch: 7.0 mm
Min stitch: 0.0 mm
Max jump: 7.0 mm
Total thread: 375.68ft
Total bobbin: 109.82ft

Stop Sequence:

#	N#	Color	St.	Code	Name	Chart
1.	4		1,398		R255 G234 B1	
2.	9		4,439		R255 G255 B255	
3.	5		1,221		R224 G77 B61	
4.	3		1,396	3	Red	Default
5.	11		832	11	Dark Red	Default
6.	7		434		R153 G0 B64	
7.	15		2,903	15	Pink	Default
8.	14		3,257		R31 G103 B237	
9.	10		1,624	10	Dark Blue	Default
10.	2		1,092		R0 G0 B61	
11.	13		1,422	13	Purple	Default
12.	6		576		R73 G0 B97	
13.	8		3,224		R255 G1 B136	
14.	12		4,490		R0 G0 B0	



Production Worksheet

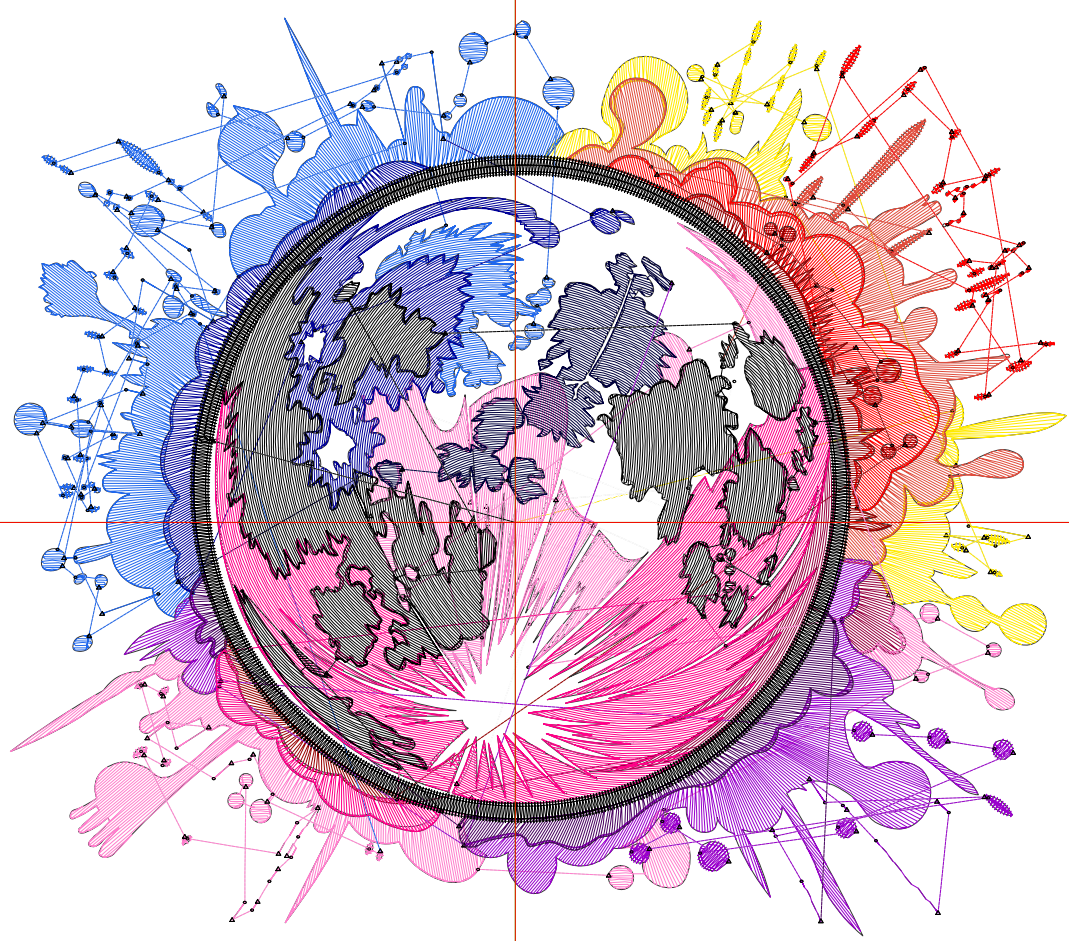
Wilcom EmbroideryStudio - Designing



Design: **5**

Title:

Stitches: 31,905
Height: 4.76 in
Width: 5.50 in
Colors: 14
Colorway: Colorway 1
Zoom: 1:1



Production Worksheet

Wilcom EmbroideryStudio - Designing



Design: **5**

Title:

Stitches: 31,905
 Height: 4.76 in
 Width: 5.50 in
 Colors: 14
 Colorway: Colorway 1
 Zoom: 1:1

Machine format: Tajima
 Color changes: 13
 Stops: 14
 Trims: 189
 Appliqués: 0
 Left: 66.8 mm
 Right: 72.9 mm
 Up: 66.7 mm
 Down: 54.1 mm
 EndX: 0.00 in
 EndY: 0.00 in
 Area 26.16 in²
 Max stitch: 7.0 mm
 Min stitch: 0.0 mm
 Max jump: 7.0 mm
 Total thread: 433.11ft
 Total bobbin: 129.87ft

Stop Sequence:

#	N#	Color	St.	Code	Name	Chart
1.	4		1,549		R255 G234 B1	
2.	9		5,021		R255 G255 B255	
3.	5		1,368		R224 G77 B61	
4.	3		1,562	3	Red	Default
5.	11		930	11	Dark Red	Default
6.	7		501		R153 G0 B64	
7.	15		3,327	15	Pink	Default
8.	14		3,616		R31 G103 B237	
9.	10		1,818	10	Dark Blue	Default
10.	2		1,249		R0 G0 B61	
11.	13		1,572	13	Purple	Default
12.	6		668		R73 G0 B97	
13.	8		3,611		R255 G1 B136	
14.	12		5,111		R0 G0 B0	

Production Worksheet

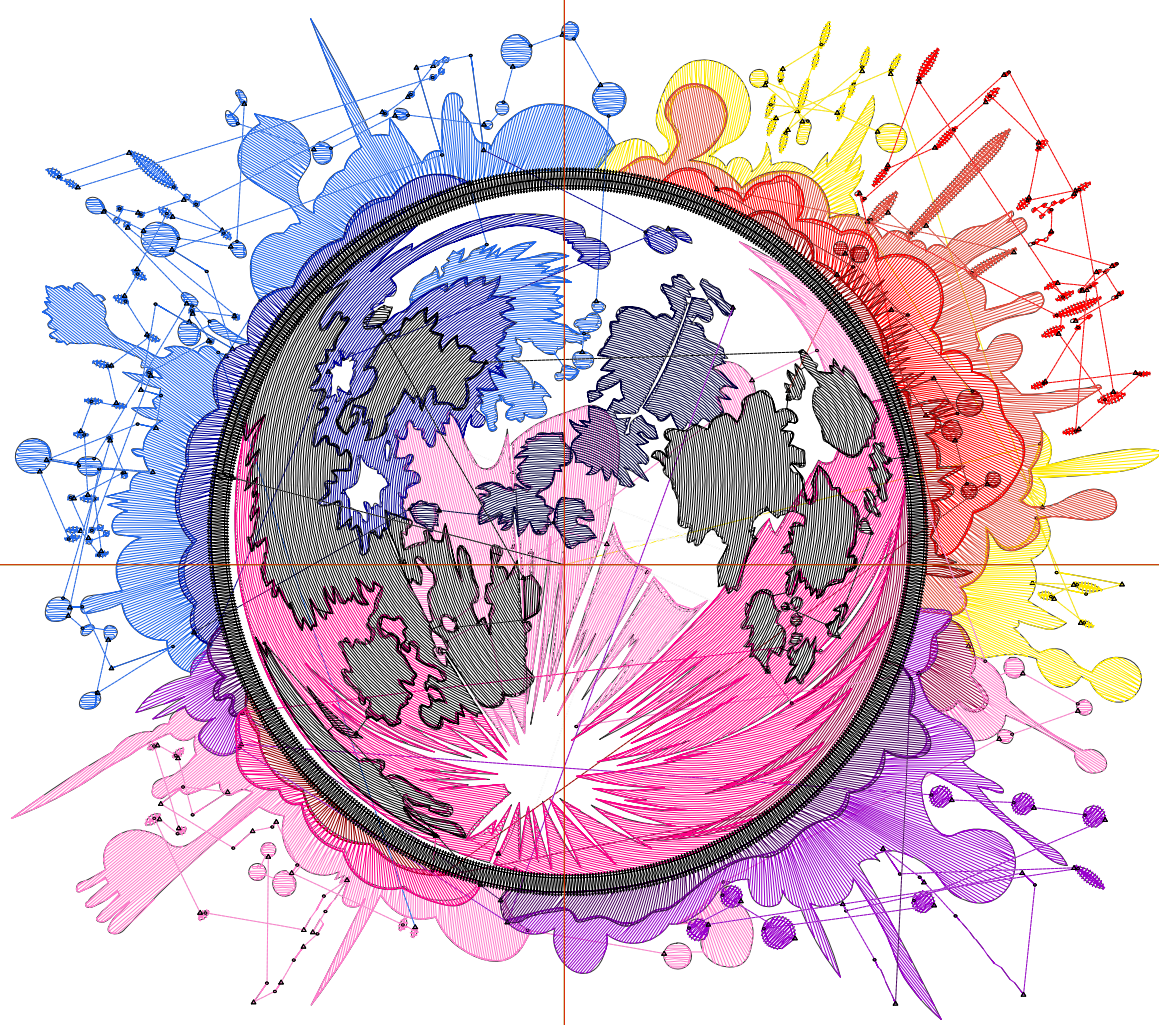
Wilcom EmbroideryStudio - Designing



Design: **6**

Title:

Stitches: 35,512
Height: 5.21 in
Width: 6.00 in
Colors: 14
Colorway: Colorway 1
Zoom: 1:1



Production Worksheet

Wilcom EmbroideryStudio - Designing



Design: **6**

Title:

Stitches: 35,512
 Height: 5.21 in
 Width: 6.00 in
 Colors: 14
 Colorway: Colorway 1
 Zoom: 1:1

Machine format: Tajima
 Color changes: 13
 Stops: 14
 Trims: 188
 Appliqués: 0
 Left: 73.2 mm
 Right: 79.3 mm
 Up: 72.3 mm
 Down: 60.2 mm
 EndX: 0.00 in
 EndY: 0.00 in
 Area 31.28 in²
 Max stitch: 7.0 mm
 Min stitch: 0.0 mm
 Max jump: 7.0 mm
 Total thread: 492.85ft
 Total bobbin: 151.26ft

Stop Sequence:

#	N#	Color	St.	Code	Name	Chart
1.	4		1,687		R255 G234 B1	
2.	9		5,622		R255 G255 B255	
3.	5		1,515		R224 G77 B61	
4.	3		1,705	3	Red	Default
5.	11		1,032	11	Dark Red	Default
6.	7		559		R153 G0 B64	
7.	15		3,639	15	Pink	Default
8.	14		3,959		R31 G103 B237	
9.	10		2,053	10	Dark Blue	Default
10.	2		1,390		R0 G0 B61	
11.	13		1,758	13	Purple	Default
12.	6		739		R73 G0 B97	
13.	8		4,123		R255 G1 B136	
14.	12		5,729		R0 G0 B0	

Production Worksheet

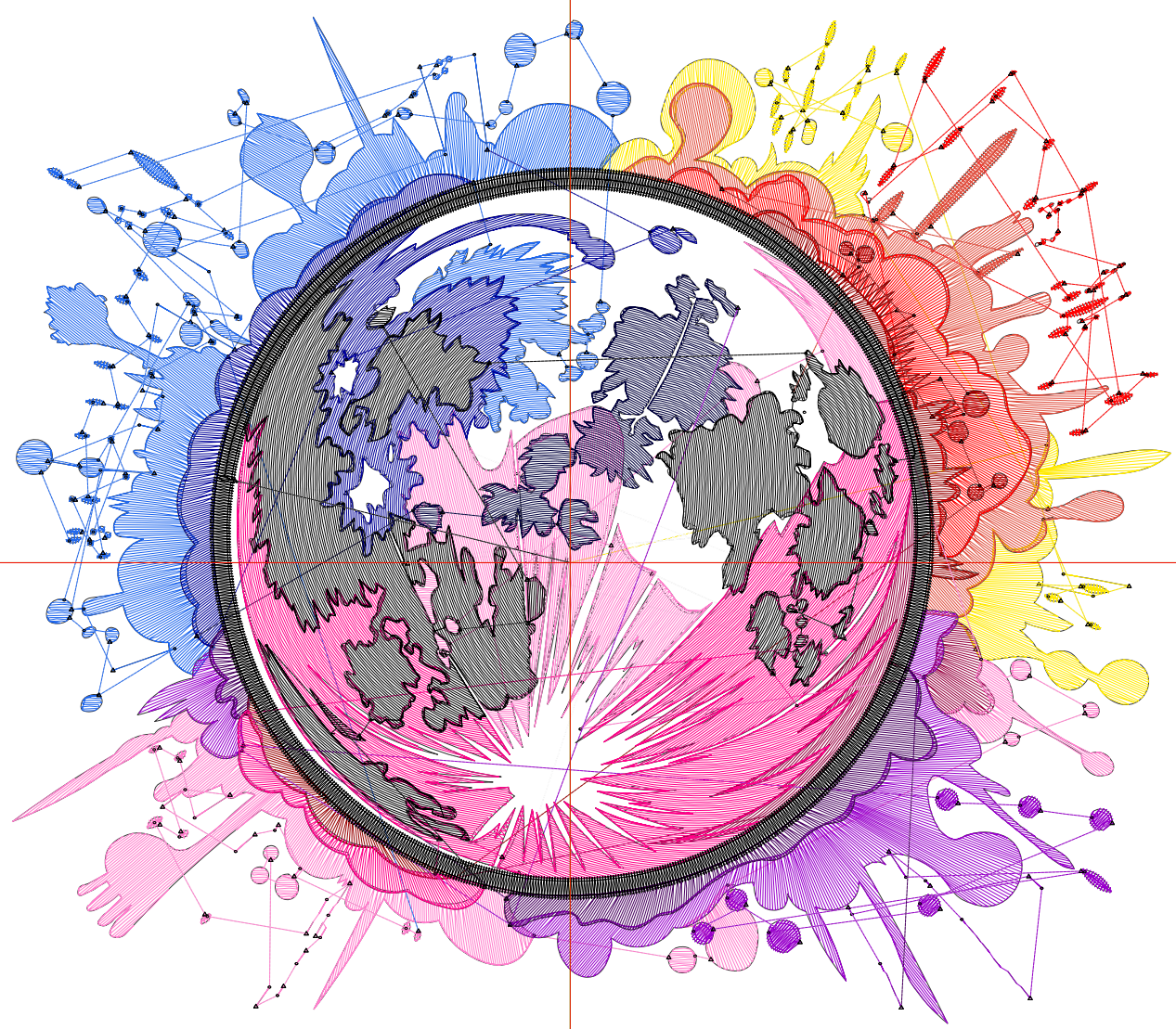
Wilcom EmbroideryStudio - Designing



Design: **6**

Title:

Stitches: 39,579
Height: 5.65 in
Width: 6.50 in
Colors: 14
Colorway: Colorway 1
Zoom: 1:1



Production Worksheet

Wilcom EmbroideryStudio - Designing



Design: **6**

Title:

Stitches: 39,579
 Height: 5.65 in
 Width: 6.50 in
 Colors: 14
 Colorway: Colorway 1
 Zoom: 1:1

Machine format: Tajima
 Color changes: 13
 Stops: 14
 Trims: 196
 Appliqués: 0
 Left: 79.5 mm
 Right: 85.6 mm
 Up: 77.8 mm
 Down: 65.7 mm
 EndX: 0.00 in
 EndY: 0.00 in
 Area 36.70 in²
 Max stitch: 7.0 mm
 Min stitch: 0.0 mm
 Max jump: 7.0 mm
 Total thread: 558.87ft
 Total bobbin: 174.56ft

Stop Sequence:

#	N#	Color	St.	Code	Name	Chart
1.	4		1,810		R255 G234 B1	
2.	9		6,314		R255 G255 B255	
3.	5		1,678		R224 G77 B61	
4.	3		1,852	3	Red	Default
5.	11		1,132	11	Dark Red	Default
6.	7		644		R153 G0 B64	
7.	15		4,036	15	Pink	Default
8.	14		4,346		R31 G103 B237	
9.	10		2,318	10	Dark Blue	Default
10.	2		1,568		R0 G0 B61	
11.	13		1,945	13	Purple	Default
12.	6		824		R73 G0 B97	
13.	8		4,668		R255 G1 B136	
14.	12		6,442		R0 G0 B0	

Production Worksheet

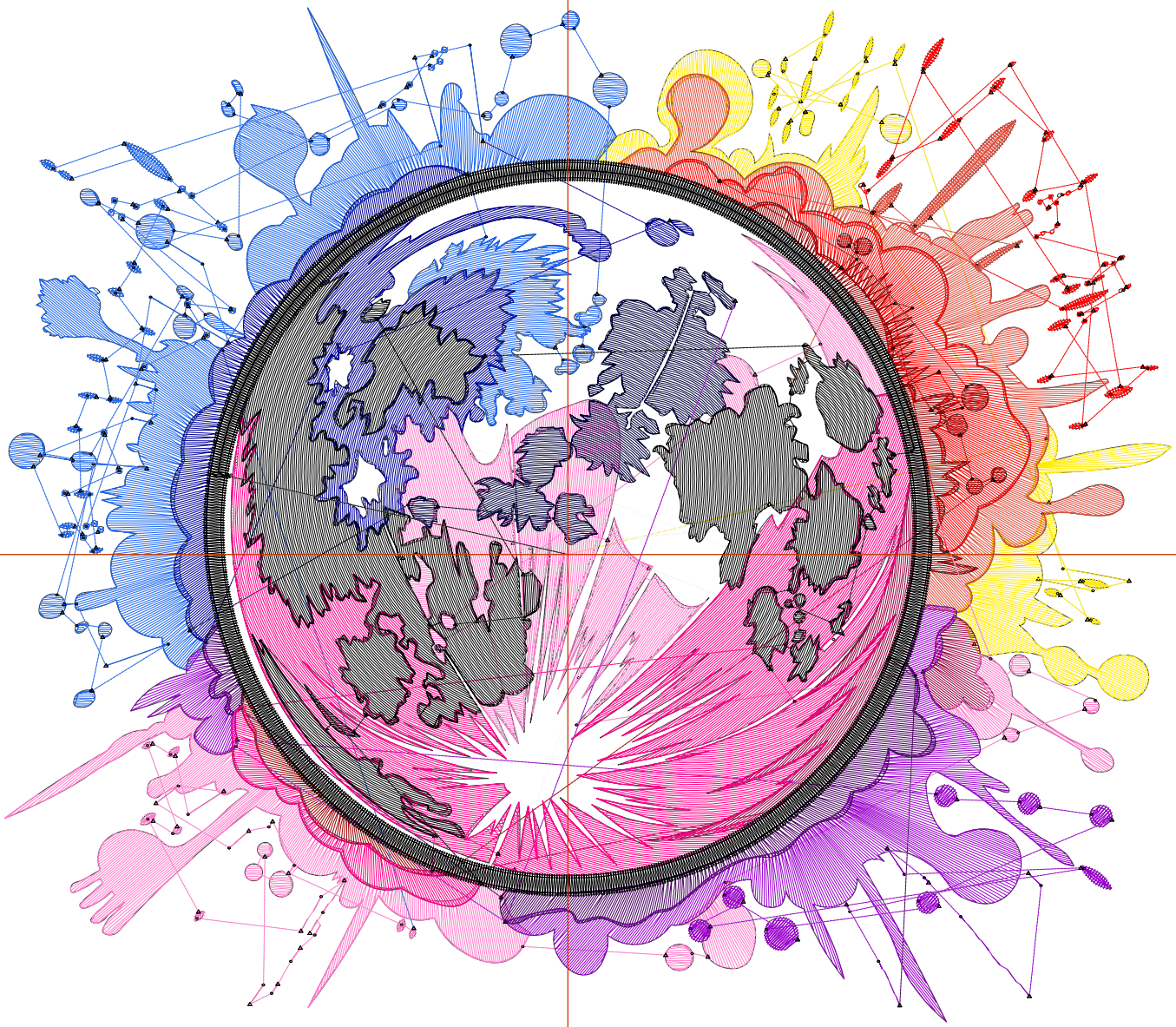
Wilcom EmbroideryStudio - Designing



Design: **7**

Title:

Stitches: 43,523
Height: 6.08 in
Width: 7.00 in
Colors: 14
Colorway: Colorway 1
Zoom: 1:1



Production Worksheet

Wilcom EmbroideryStudio - Designing



Design: **7**

Title:

Stitches: 43,523
 Height: 6.08 in
 Width: 7.00 in
 Colors: 14
 Colorway: Colorway 1
 Zoom: 1:1

Machine format: Tajima
 Color changes: 13
 Stops: 14
 Trims: 198
 Appliqués: 0
 Left: 85.8 mm
 Right: 91.9 mm
 Up: 83.3 mm
 Down: 71.2 mm
 EndX: 0.00 in
 EndY: 0.00 in
 Area 42.58 in²
 Max stitch: 7.0 mm
 Min stitch: 0.0 mm
 Max jump: 7.0 mm
 Total thread: 625.75ft
 Total bobbin: 198.86ft

Stop Sequence:

#	N#	Color	St.	Code	Name	Chart
1.	4		1,953		R255 G234 B1	
2.	9		7,012		R255 G255 B255	
3.	5		1,850		R224 G77 B61	
4.	3		2,023	3	Red	Default
5.	11		1,228	11	Dark Red	Default
6.	7		669		R153 G0 B64	
7.	15		4,379	15	Pink	Default
8.	14		4,764		R31 G103 B237	
9.	10		2,556	10	Dark Blue	Default
10.	2		1,716		R0 G0 B61	
11.	13		2,129	13	Purple	Default
12.	6		915		R73 G0 B97	
13.	8		5,186		R255 G1 B136	
14.	12		7,141		R0 G0 B0	

Production Worksheet

Wilcom EmbroideryStudio - Designing



Design: **7**

Title:

Stitches: 47,897
Height: 6.52 in
Width: 7.50 in
Colors: 14
Colorway: Colorway 1
Zoom: 1:1



Production Worksheet

Wilcom EmbroideryStudio - Designing



Design: **7**

Title:

Stitches: 47,897
 Height: 6.52 in
 Width: 7.50 in
 Colors: 14
 Colorway: Colorway 1
 Zoom: 1:1

Machine format: Tajima
 Color changes: 13
 Stops: 14
 Trims: 201
 Appliqués: 0
 Left: 92.2 mm
 Right: 98.3 mm
 Up: 88.8 mm
 Down: 76.7 mm
 EndX: 0.00 in
 EndY: 0.00 in
 Area 48.88 in²
 Max stitch: 7.0 mm
 Min stitch: 0.0 mm
 Max jump: 7.0 mm
 Total thread: 699.27ft
 Total bobbin: 225.42ft

Stop Sequence:

#	N#	Color	St.	Code	Name	Chart
1.	4		2,155		R255 G234 B1	
2.	9		7,778		R255 G255 B255	
3.	5		2,049		R224 G77 B61	
4.	3		2,197	3	Red	Default
5.	11		1,344	11	Dark Red	Default
6.	7		738		R153 G0 B64	
7.	15		4,896	15	Pink	Default
8.	14		5,199		R31 G103 B237	
9.	10		2,825	10	Dark Blue	Default
10.	2		1,900		R0 G0 B61	
11.	13		2,325	13	Purple	Default
12.	6		1,002		R73 G0 B97	
13.	8		5,738		R255 G1 B136	
14.	12		7,749		R0 G0 B0	