

Production Worksheet

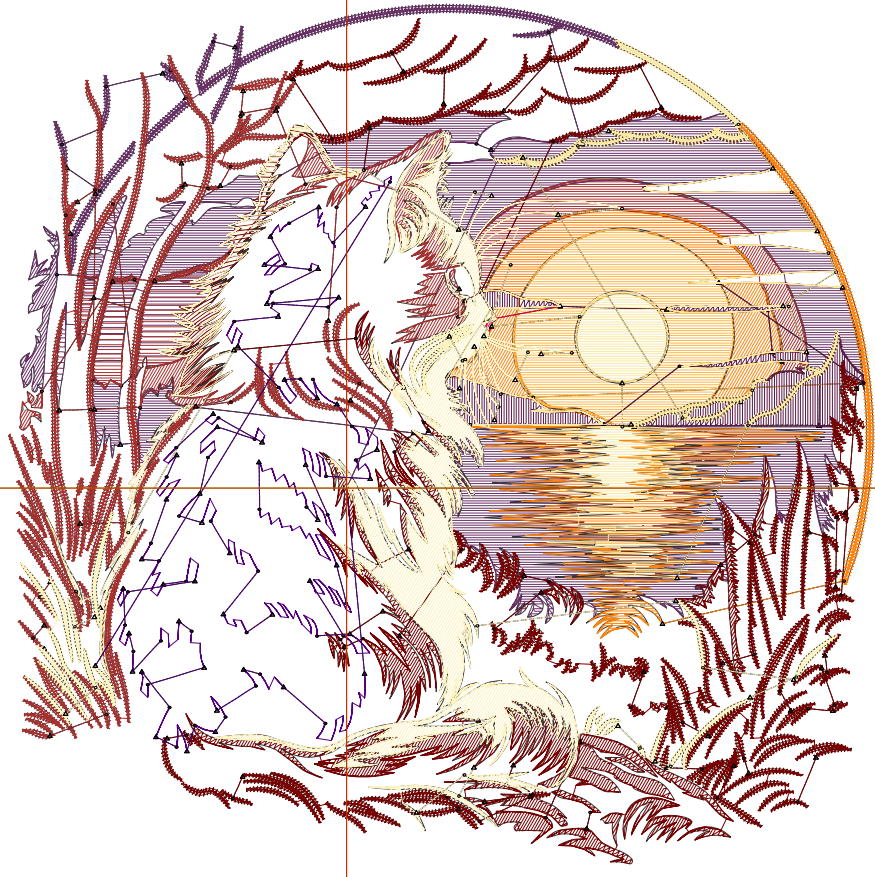
Wilcom EmbroideryStudio - Designing



Design: **4**

Title:

Stitches: 32,386
Height: 4.48 in
Width: 4.51 in
Colors: 10
Colorway: Colorway 1
Zoom: 1:1



1

1

2

2

Production Worksheet

Wilcom EmbroideryStudio - Designing



Design: **4**

Title:

Stitches: 32,386
 Height: 4.48 in
 Width: 4.51 in
 Colors: 10
 Colorway: Colorway 1
 Zoom: 1:1

Machine format: Tajima
 Color changes: 9
 Stops: 10
 Trims: 175
 Appliqués: 0
 Left: 44.8 mm
 Right: 69.8 mm
 Up: 64.0 mm
 Down: 49.7 mm
 EndX: 0.00 in
 EndY: 0.00 in
 Area 20.20 in²
 Max stitch: 11.7 mm
 Min stitch: 0.0 mm
 Max jump: 7.0 mm
 Total thread: 386.47ft
 Total bobbin: 101.15ft

Stop Sequence:

#	N#	Color	St.	Code	Name	Chart
1.	13		4,287	1188	Chokecherry	Madeira Classic 40
2.	1		6,322		R168 G48 B46	
3.	12		1,956	12	Orange	Default
4.	4		633	1437		Madeira Classic 40
5.	3		905		R92 G24 B69	
6.	2		15	2	Blue	Default
7.	5		1,759	1067	Lemon Chiffon	Madeira Classic 40
8.	11		10,158	11	Dark Red	Default
9.	9		5,006	1123	Parchment	Madeira Classic 40
10.	6		1,343	6	Dark Magenta	Default

Production Worksheet

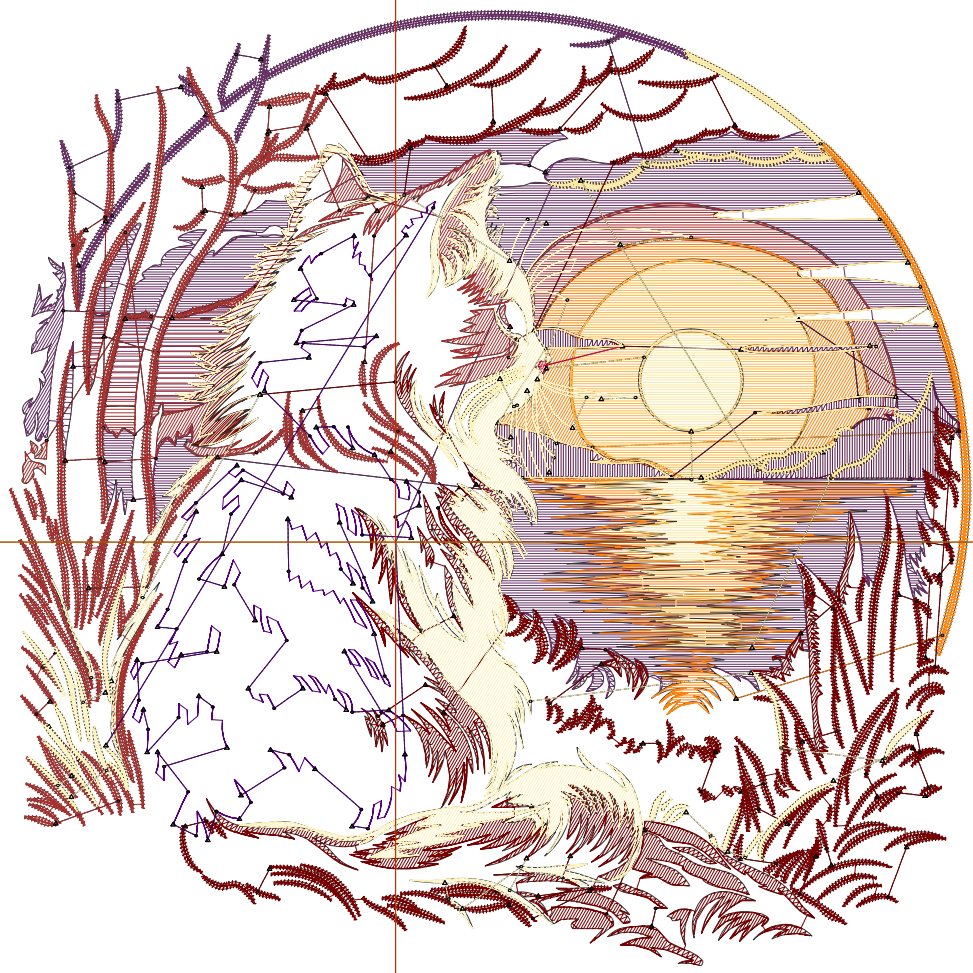
Wilcom EmbroideryStudio - Designing



Design: **5**

Title:

Stitches: 36,152
Height: 4.97 in
Width: 5.01 in
Colors: 10
Colorway: Colorway 1
Zoom: 1:1



Production Worksheet

Wilcom EmbroideryStudio - Designing



Design: **5**

Title:

Stitches: 36,152
 Height: 4.97 in
 Width: 5.01 in
 Colors: 10
 Colorway: Colorway 1
 Zoom: 1:1

Machine format: Tajima
 Color changes: 9
 Stops: 10
 Trims: 185
 Appliqués: 0
 Left: 51.1 mm
 Right: 76.2 mm
 Up: 70.3 mm
 Down: 56.0 mm
 EndX: 0.00 in
 EndY: 0.00 in
 Area 24.92 in²
 Max stitch: 11.3 mm
 Min stitch: 0.0 mm
 Max jump: 6.9 mm
 Total thread: 440.30ft
 Total bobbin: 118.40ft

Stop Sequence:

#	N#	Color	St.	Code	Name	Chart
1.	13		4,883	1188	Chokecherry	Madeira Classic 40
2.	1		7,035		R168 G48 B46	
3.	12		2,169	12	Orange	Default
4.	4		784	1437		Madeira Classic 40
5.	3		1,045		R92 G24 B69	
6.	2		17	2	Blue	Default
7.	5		2,069	1067	Lemon Chiffon	Madeira Classic 40
8.	11		11,087	11	Dark Red	Default
9.	9		5,651	1123	Parchment	Madeira Classic 40
10.	6		1,410	6	Dark Magenta	Default

Production Worksheet

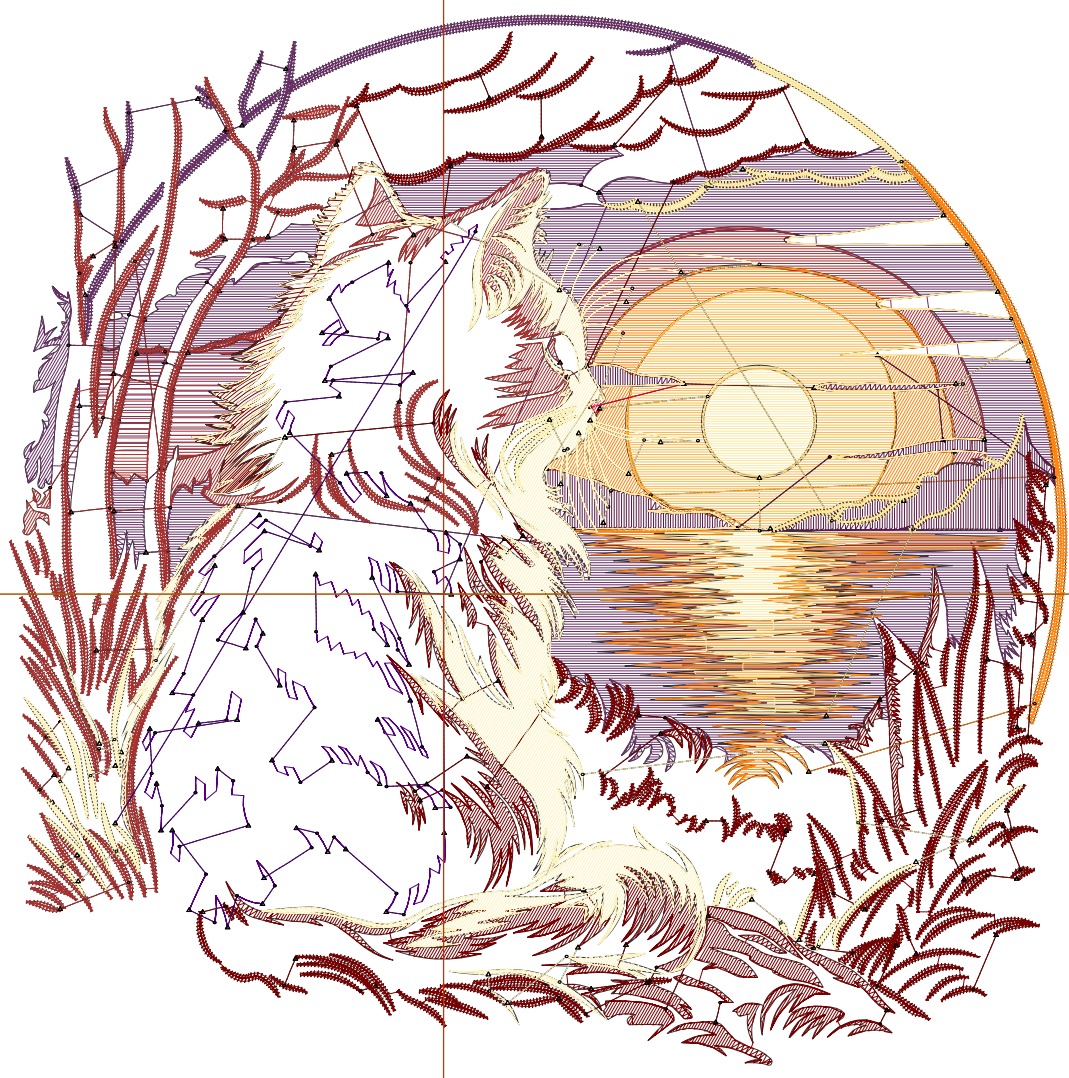
Wilcom EmbroideryStudio - Designing



Design: **5**

Title:

Stitches: 40,172
Height: 5.47 in
Width: 5.51 in
Colors: 10
Colorway: Colorway 1
Zoom: 1:1



Production Worksheet

Wilcom EmbroideryStudio - Designing



Design: **5**

Title:

Stitches: 40,172
 Height: 5.47 in
 Width: 5.51 in
 Colors: 10
 Colorway: Colorway 1
 Zoom: 1:1

Machine format: Tajima
 Color changes: 9
 Stops: 10
 Trims: 202
 Appliqués: 0
 Left: 57.5 mm
 Right: 82.5 mm
 Up: 76.7 mm
 Down: 62.3 mm
 EndX: 0.00 in
 EndY: 0.00 in
 Area 30.14 in²
 Max stitch: 6.8 mm
 Min stitch: 0.0 mm
 Max jump: 6.8 mm
 Total thread: 497.98ft
 Total bobbin: 136.95ft

Stop Sequence:

#	N#	Color	St.	Code	Name	Chart
1.	13		5,615	1188	Chokecherry	Madeira Classic 40
2.	1		7,704		R168 G48 B46	
3.	12		2,518	12	Orange	Default
4.	4		904	1437		Madeira Classic 40
5.	3		1,173		R92 G24 B69	
6.	2		18	2	Blue	Default
7.	5		2,145	1067	Lemon Chiffon	Madeira Classic 40
8.	11		12,316	11	Dark Red	Default
9.	9		6,272	1123	Parchment	Madeira Classic 40
10.	6		1,505	6	Dark Magenta	Default

Production Worksheet

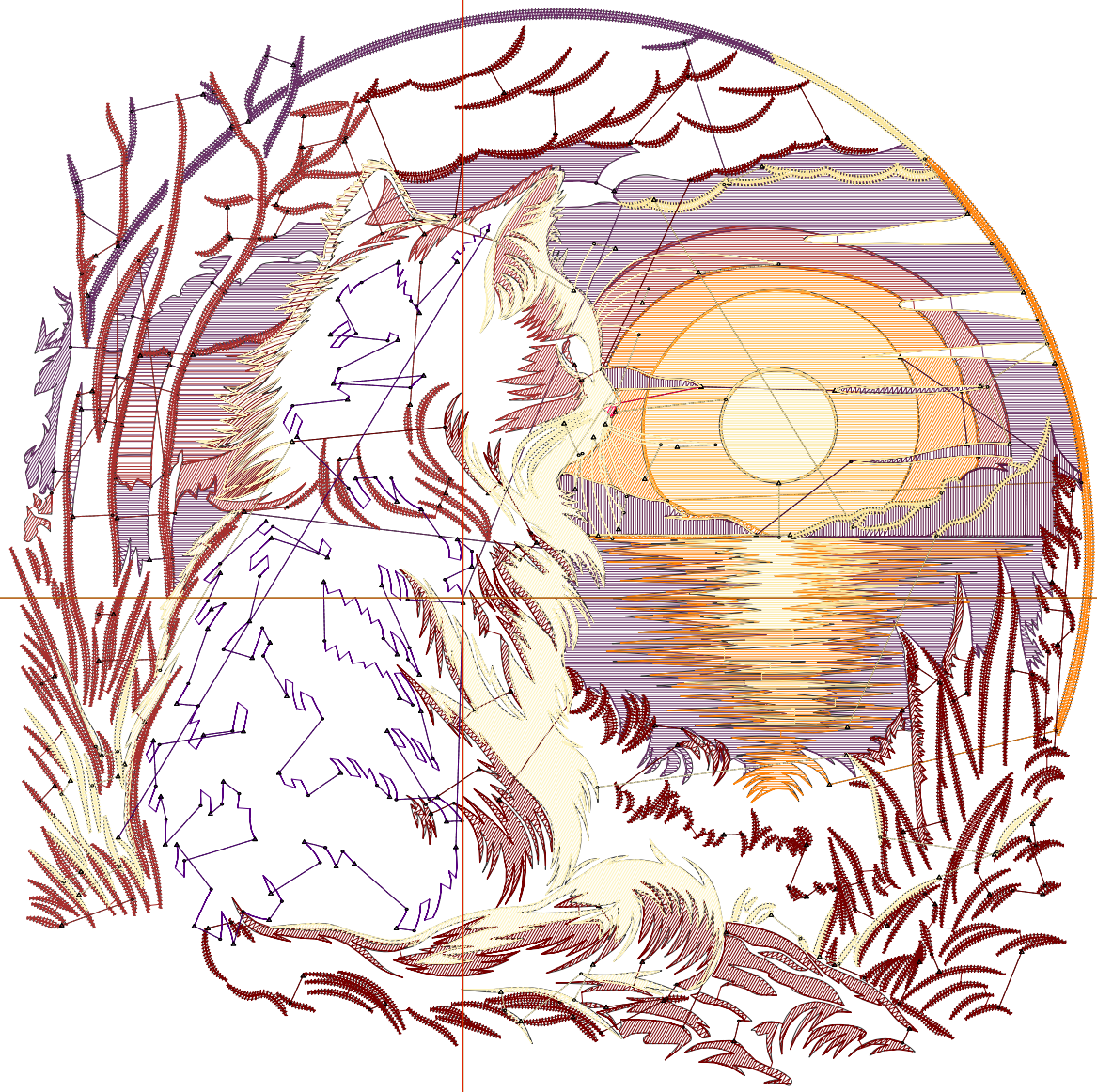
Wilcom EmbroideryStudio - Designing



Design: **6**

Title:

Stitches: 44,273
Height: 5.96 in
Width: 6.01 in
Colors: 10
Colorway: Colorway 1
Zoom: 1:1



Production Worksheet

Wilcom EmbroideryStudio - Designing



Design: **6**

Title:

Stitches: 44,273
 Height: 5.96 in
 Width: 6.01 in
 Colors: 10
 Colorway: Colorway 1
 Zoom: 1:1

Machine format: Tajima
 Color changes: 9
 Stops: 10
 Trims: 218
 Appliqués: 0
 Left: 63.8 mm
 Right: 88.9 mm
 Up: 83.0 mm
 Down: 68.5 mm
 EndX: 0.00 in
 EndY: 0.00 in
 Area 35.86 in²
 Max stitch: 7.0 mm
 Min stitch: 0.0 mm
 Max jump: 7.0 mm
 Total thread: 559.02ft
 Total bobbin: 157.17ft

Stop Sequence:

#	N#	Color	St.	Code	Name	Chart
1.	13		6,272	1188	Chokecherry	Madeira Classic 40
2.	1		8,441		R168 G48 B46	
3.	12		2,819	12	Orange	Default
4.	4		1,004	1437		Madeira Classic 40
5.	3		1,300		R92 G24 B69	
6.	2		24	2	Blue	Default
7.	5		2,473	1067	Lemon Chiffon	Madeira Classic 40
8.	11		13,360	11	Dark Red	Default
9.	9		6,982	1123	Parchment	Madeira Classic 40
10.	6		1,596	6	Dark Magenta	Default

Production Worksheet

Wilcom EmbroideryStudio - Designing



Design: **6**

Title:

Stitches: 48,146
Height: 6.46 in
Width: 6.51 in
Colors: 10
Colorway: Colorway 1
Zoom: 1:1



Production Worksheet

Wilcom EmbroideryStudio - Designing



Design: **6**

Title:

Stitches: 48,146
 Height: 6.46 in
 Width: 6.51 in
 Colors: 10
 Colorway: Colorway 1
 Zoom: 1:1

Machine format: Tajima
 Color changes: 9
 Stops: 10
 Trims: 225
 Appliqués: 0
 Left: 70.2 mm
 Right: 95.2 mm
 Up: 89.3 mm
 Down: 74.9 mm
 EndX: 0.00 in
 EndY: 0.00 in
 Area 42.09 in²
 Max stitch: 7.0 mm
 Min stitch: 0.0 mm
 Max jump: 7.0 mm
 Total thread: 617.97ft
 Total bobbin: 177.05ft

Stop Sequence:

#	N#	Color	St.	Code	Name	Chart
1.	13		6,907	1188	Chokecherry	Madeira Classic 40
2.	1		9,172		R168 G48 B46	
3.	12		3,138	12	Orange	Default
4.	4		1,216	1437		Madeira Classic 40
5.	3		1,483		R92 G24 B69	
6.	2		20	2	Blue	Default
7.	5		2,560	1067	Lemon Chiffon	Madeira Classic 40
8.	11		14,480	11	Dark Red	Default
9.	9		7,521	1123	Parchment	Madeira Classic 40
10.	6		1,647	6	Dark Magenta	Default

Production Worksheet

Wilcom EmbroideryStudio - Designing



Design: **7**

Title:

Stitches: 52,521
Height: 6.96 in
Width: 7.01 in
Colors: 10
Colorway: Colorway 1
Zoom: 1:1



Production Worksheet

Wilcom EmbroideryStudio - Designing



Design: **7**

Title:

Stitches: 52,521
 Height: 6.96 in
 Width: 7.01 in
 Colors: 10
 Colorway: Colorway 1
 Zoom: 1:1

Machine format: Tajima
 Color changes: 9
 Stops: 10
 Trims: 240
 Appliqués: 0
 Left: 76.5 mm
 Right: 101.6 mm
 Up: 95.6 mm
 Down: 81.2 mm
 EndX: 0.00 in
 EndY: 0.00 in
 Area 48.81 in²
 Max stitch: 7.0 mm
 Min stitch: 0.0 mm
 Max jump: 7.0 mm
 Total thread: 684.82ft
 Total bobbin: 199.65ft

Stop Sequence:

#	N#	Color	St.	Code	Name	Chart
1.	13		7,627	1188	Chokecherry	Madeira Classic 40
2.	1		9,915		R168 G48 B46	
3.	12		3,465	12	Orange	Default
4.	4		1,343	1437		Madeira Classic 40
5.	3		1,597		R92 G24 B69	
6.	2		21	2	Blue	Default
7.	5		2,943	1067	Lemon Chiffon	Madeira Classic 40
8.	11		15,641	11	Dark Red	Default
9.	9		8,227	1123	Parchment	Madeira Classic 40
10.	6		1,740	6	Dark Magenta	Default

Production Worksheet

Wilcom EmbroideryStudio - Designing



Design: **7**

Title:

Stitches: 56,764
Height: 7.46 in
Width: 7.51 in
Colors: 10
Colorway: Colorway 1
Zoom: 1:1



Production Worksheet

Wilcom EmbroideryStudio - Designing



Design: **7**

Title:

Stitches: 56,764
 Height: 7.46 in
 Width: 7.51 in
 Colors: 10
 Colorway: Colorway 1
 Zoom: 1:1

Machine format: Tajima
 Color changes: 9
 Stops: 10
 Trims: 253
 Appliqués: 0
 Left: 82.9 mm
 Right: 107.9 mm
 Up: 101.9 mm
 Down: 87.5 mm
 EndX: 0.00 in
 EndY: 0.00 in
 Area 56.01 in²
 Max stitch: 6.8 mm
 Min stitch: 0.0 mm
 Max jump: 6.8 mm
 Total thread: 751.54ft
 Total bobbin: 222.69ft

Stop Sequence:

#	N#	Color	St.	Code	Name	Chart
1.	13		8,449	1188	Chokecherry	Madeira Classic 40
2.	1		10,691		R168 G48 B46	
3.	12		3,840	12	Orange	Default
4.	4		1,493	1437		Madeira Classic 40
5.	3		1,767		R92 G24 B69	
6.	2		24	2	Blue	Default
7.	5		3,016	1067	Lemon Chiffon	Madeira Classic 40
8.	11		16,799	11	Dark Red	Default
9.	9		8,844	1123	Parchment	Madeira Classic 40
10.	6		1,839	6	Dark Magenta	Default

Production Worksheet

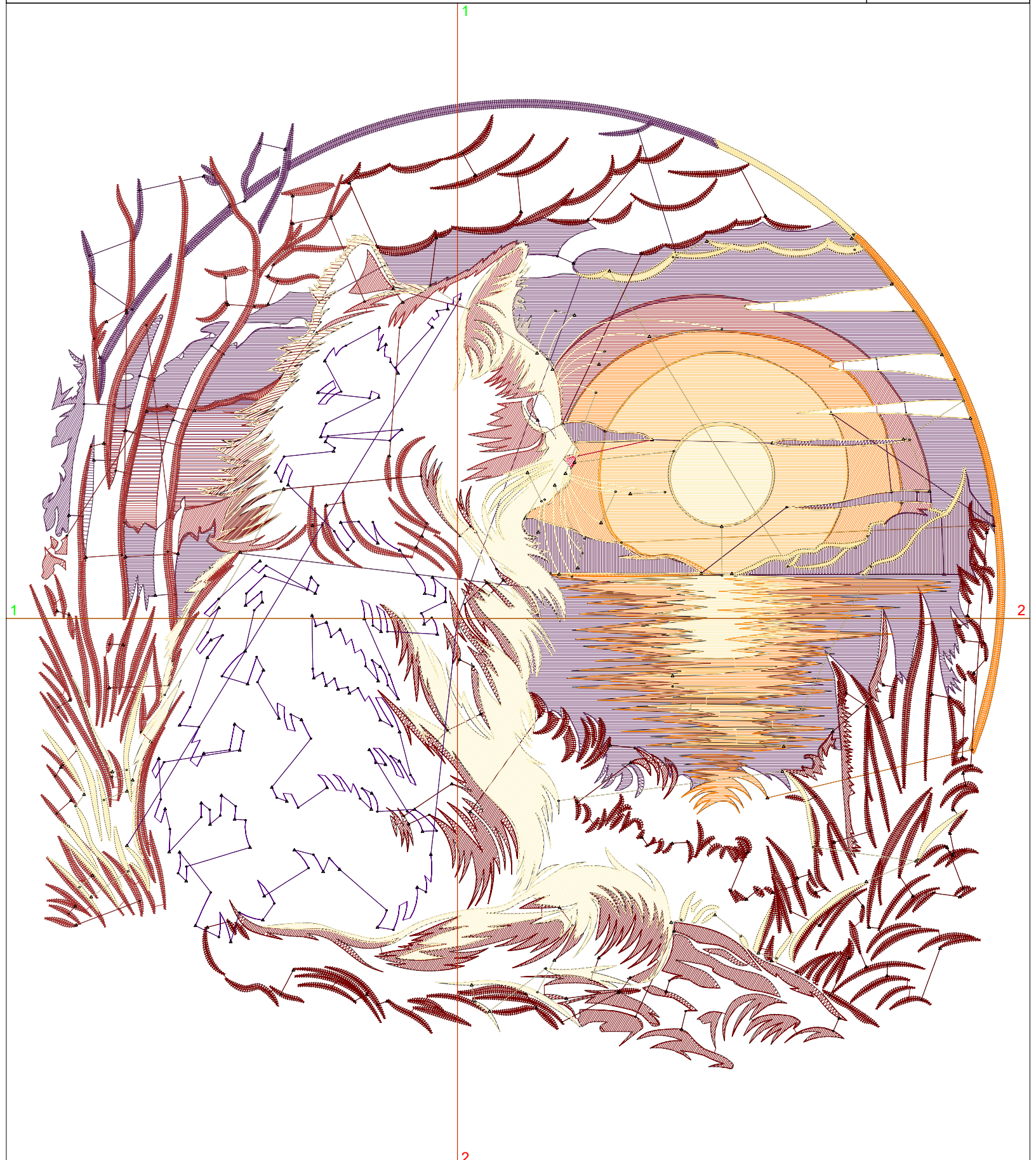
Wilcom EmbroideryStudio - Designing



Design: **8**

Title:

Stitches: 61,526
Height: 7.95 in
Width: 8.01 in
Colors: 10
Colorway: Colorway 1
Zoom: 1:1



Production Worksheet

Wilcom EmbroideryStudio - Designing



Design: **8**

Title:

Stitches: 61,526
 Height: 7.95 in
 Width: 8.01 in
 Colors: 10
 Colorway: Colorway 1
 Zoom: 1:1

Machine format: Tajima
 Color changes: 9
 Stops: 10
 Trims: 273
 Appliqués: 0
 Left: 89.2 mm
 Right: 114.3 mm
 Up: 108.2 mm
 Down: 93.8 mm
 EndX: 0.00 in
 EndY: 0.00 in
 Area 63.71 in²
 Max stitch: 6.9 mm
 Min stitch: 0.0 mm
 Max jump: 6.9 mm
 Total thread: 826.47ft
 Total bobbin: 248.58ft

Stop Sequence:

#	N#	Color	St.	Code	Name	Chart
1.	13		9,242	1188	Chokecherry	Madeira Classic 40
2.	1		11,413		R168 G48 B46	
3.	12		4,197	12	Orange	Default
4.	4		1,640	1437		Madeira Classic 40
5.	3		1,914		R92 G24 B69	
6.	2		30	2	Blue	Default
7.	5		3,395	1067	Lemon Chiffon	Madeira Classic 40
8.	11		18,091	11	Dark Red	Default
9.	9		9,648	1123	Parchment	Madeira Classic 40
10.	6		1,954	6	Dark Magenta	Default

Production Worksheet

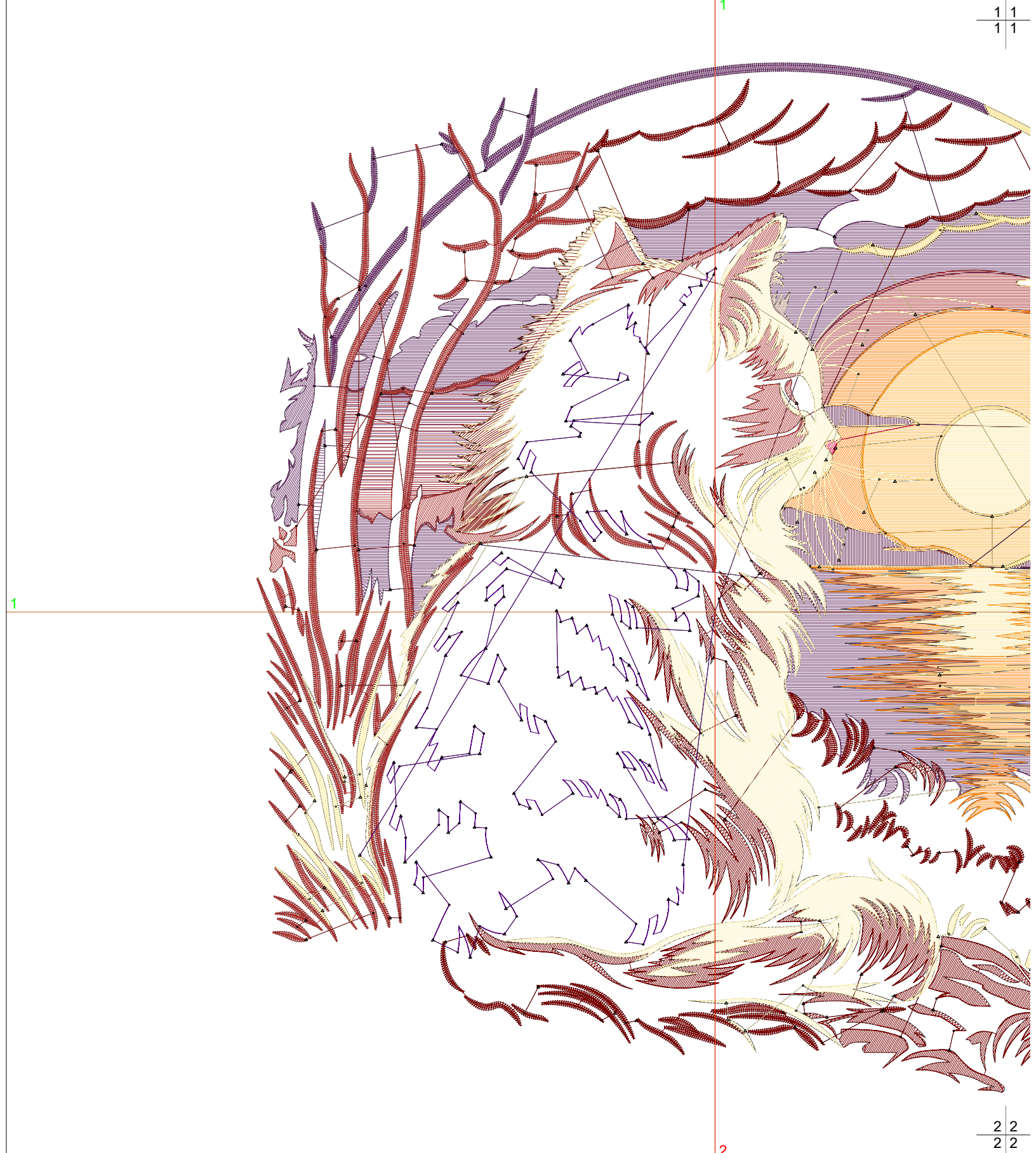
Wilcom EmbroideryStudio - Designing



Design: **8**

Title:

Stitches: 65,969
Height: 8.45 in
Width: 8.51 in
Colors: 10
Colorway: Colorway 1
Zoom: 1:1



Production Worksheet

Wilcom EmbroideryStudio - Designing

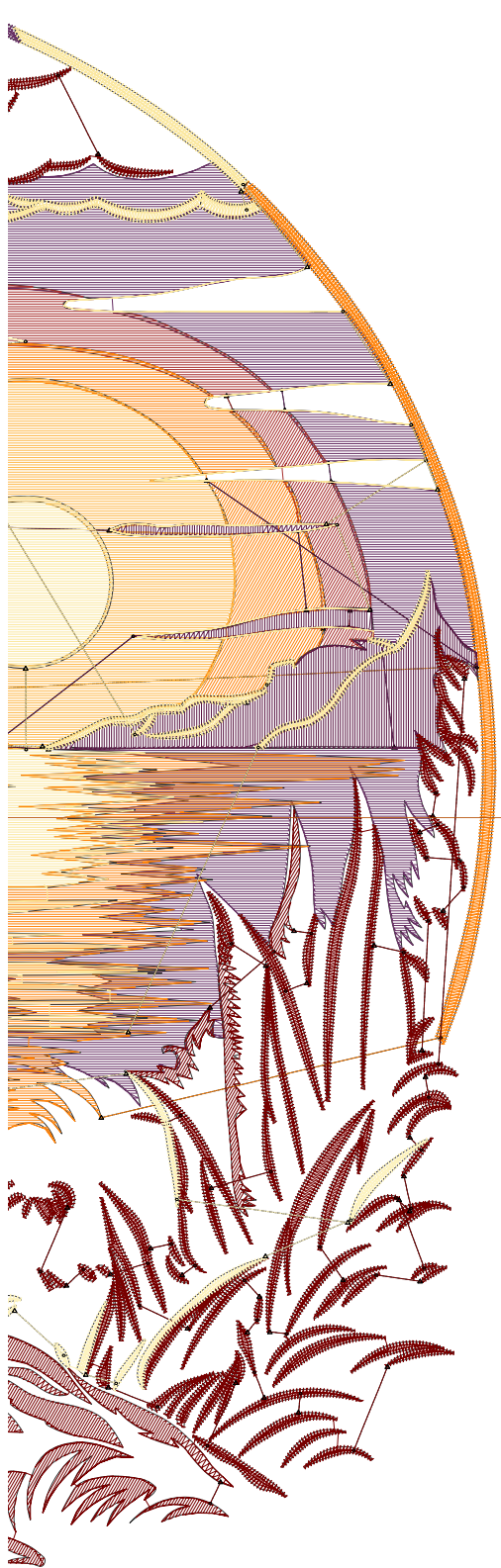


Design: **8**

Title:

Stitches: 65,969
 Height: 8.45 in
 Width: 8.51 in
 Colors: 10
 Colorway: Colorway 1
 Zoom: 1:1

1	1
1	1



2	2
2	2

Machine format: Tajima
 Color changes: 9
 Stops: 10
 Trims: 280
 Appliqués: 0
 Left: 95.6 mm
 Right: 120.6 mm
 Up: 114.5 mm
 Down: 100.2 mm
 EndX: 0.00 in
 EndY: 0.00 in
 Area: 71.94 in²
 Max stitch: 7.1 mm
 Min stitch: 0.0 mm
 Max jump: 7.0 mm
 Total thread: 898.35ft
 Total bobbin: 273.90ft

Stop Sequence:

#	N#	Color	St.	Code	Name	Chart
1.	13		10,023	1188	Chokecherry	Madeira Classic 40
2.	1		12,152		R168 G48 B46	
3.	12		4,613	12	Orange	Default
4.	4		1,894	1437		Madeira Classic 40
5.	3		2,069		R92 G24 B69	
6.	2		28	2	Blue	Default
7.	5		3,460	1067	Lemon Chiffon	Madeira Classic 40
8.	11		19,282	11	Dark Red	Default
9.	9		10,444	1123	Parchment	Madeira Classic 40
10.	6		2,002	6	Dark Magenta	Default

2