

# Production Worksheet

Wilcom EmbroideryStudio - Designing



Design: **4**

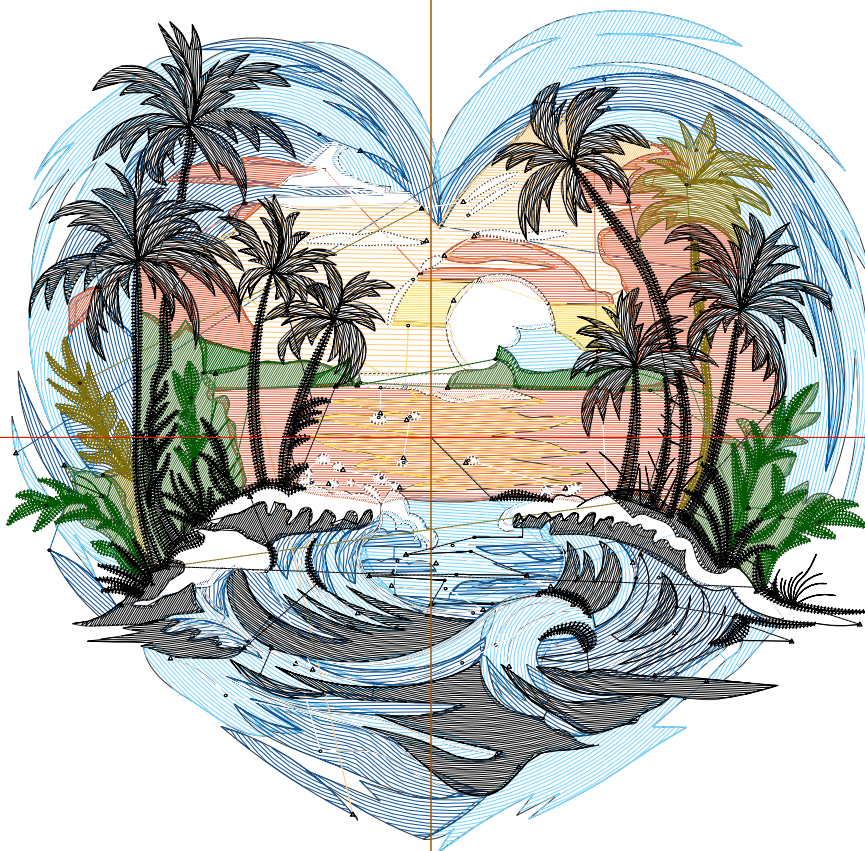
Title:

Stitches: 30,444  
 Height: 4.39 in  
 Width: 4.51 in  
 Colors: 10  
 Colorway: Colorway 1  
 Zoom: 1:1

Machine format: Tajima  
 Color changes: 9  
 Stops: 10  
 Trims: 111  
 Appliqués: 0  
 Left: 56.2 mm  
 Right: 58.2 mm  
 Up: 56.4 mm  
 Down: 55.0 mm  
 EndX: 0.00 in  
 EndY: 0.00 in  
 Area: 19.77 in<sup>2</sup>  
 Max stitch: 6.9 mm  
 Min stitch: 0.0 mm  
 Max jump: 6.9 mm  
 Total thread: 429.51ft  
 Total bobbin: 134.20ft

Stop Sequence:

#	N#	Color	St.	Code	Name	Chart
1.	5		4,528	R123	G213 B255	
2.	10		2,857	R11	G82 B153	
3.	16		1,132	R255	G203 B126	
4.	11		2,669	R224	G101 B67	
5.	4		522	R255	G223 B93	
6.	9		2,864	R255	G255 B255	
7.	14		1,407	R125	G110 B9	
8.	7		1,621	R76	G120 B54	
9.	1		1,982	R0	G87 B0	
10.	8		10,860	R0	G0 B0	



# Production Worksheet

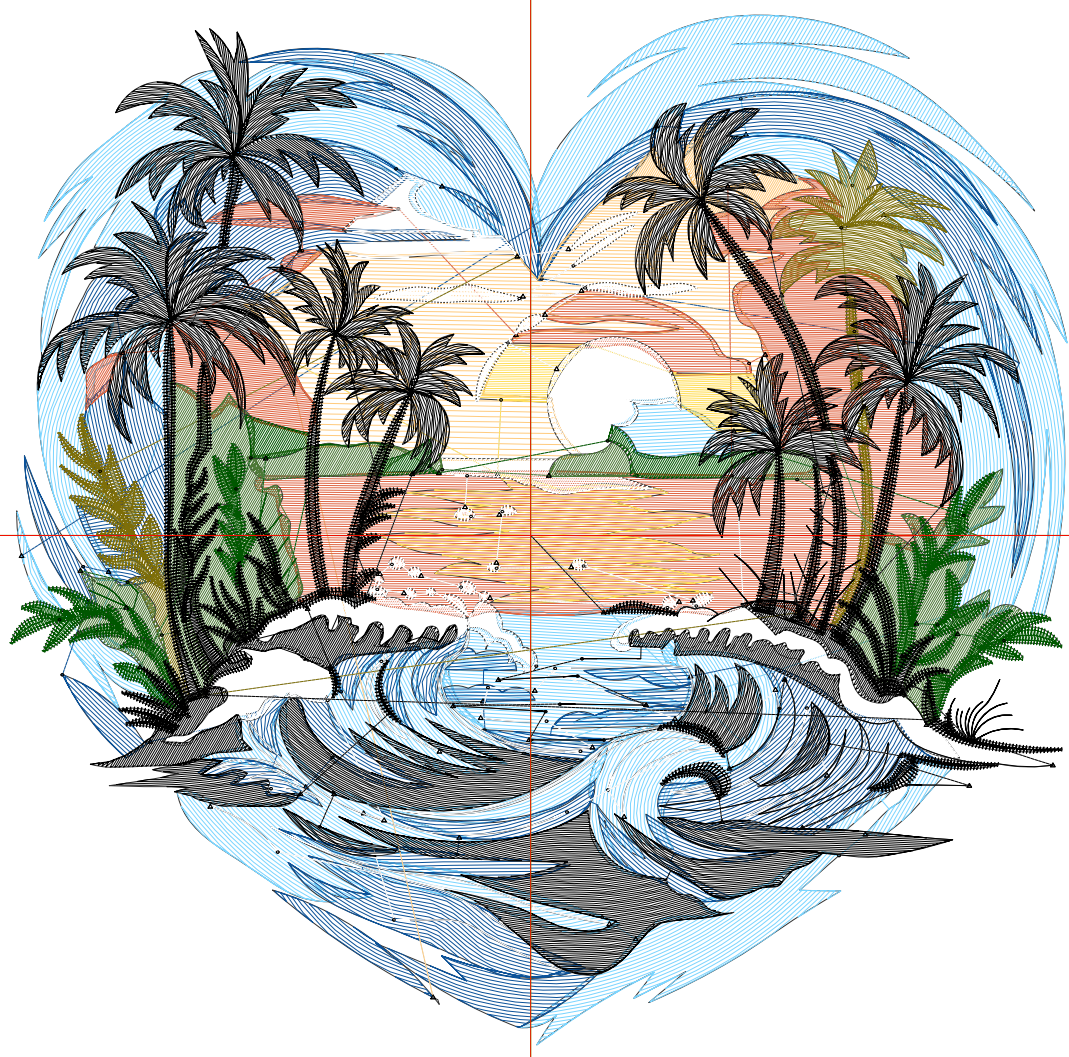
Wilcom EmbroideryStudio - Designing



Design: **5**

Title:

Stitches: 39,371  
Height: 5.36 in  
Width: 5.51 in  
Colors: 10  
Colorway: Colorway 1  
Zoom: 1:1



# Production Worksheet

Wilcom EmbroideryStudio - Designing



Design: **5**

Title:

Stitches: 39,371  
 Height: 5.36 in  
 Width: 5.51 in  
 Colors: 10  
 Colorway: Colorway 1  
 Zoom: 1:1

Machine format: Tajima  
 Color changes: 9  
 Stops: 10  
 Trims: 121  
 Appliqués: 0  
 Left: 68.9 mm  
 Right: 70.9 mm  
 Up: 68.8 mm  
 Down: 67.4 mm  
 EndX: 0.00 in  
 EndY: 0.00 in  
 Area 29.52 in<sup>2</sup>  
 Max stitch: 7.0 mm  
 Min stitch: 0.0 mm  
 Max jump: 7.0 mm  
 Total thread: 583.72ft  
 Total bobbin: 190.87ft

Stop Sequence:

#	N#	Color	St.	Code	Name	Chart
1.	5		5,970		R123 G213 B255	
2.	10		3,936		R11 G82 B153	
3.	16		1,516		R255 G203 B126	
4.	11		3,672		R224 G101 B67	
5.	4		687		R255 G223 B93	
6.	9		3,536		R255 G255 B255	
7.	14		1,718		R125 G110 B9	
8.	7		2,161		R76 G120 B54	
9.	1		2,379		R0 G87 B0	
10.	8		13,794		R0 G0 B0	

# Production Worksheet

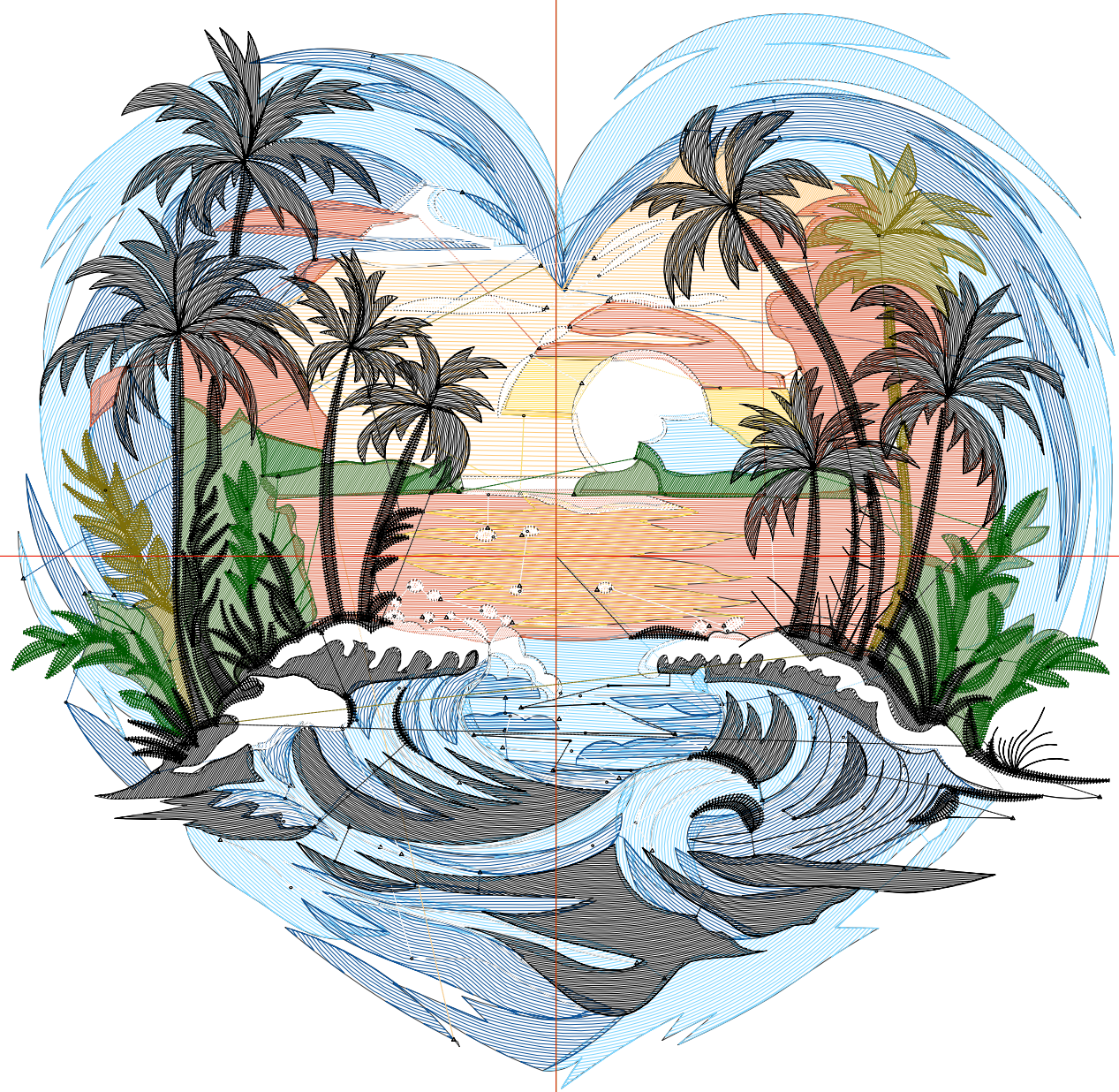
Wilcom EmbroideryStudio - Designing



Design: **6**

Title:

Stitches: 48,951  
Height: 6.34 in  
Width: 6.51 in  
Colors: 10  
Colorway: Colorway 1  
Zoom: 1:1



# Production Worksheet

Wilcom EmbroideryStudio - Designing



Design: **6**

Title:

Stitches: 48,951  
 Height: 6.34 in  
 Width: 6.51 in  
 Colors: 10  
 Colorway: Colorway 1  
 Zoom: 1:1

Machine format: Tajima  
 Color changes: 9  
 Stops: 10  
 Trims: 130  
 Appliqués: 0  
 Left: 81.6 mm  
 Right: 83.6 mm  
 Up: 81.2 mm  
 Down: 79.8 mm  
 EndX: 0.00 in  
 EndY: 0.00 in  
 Area 41.23 in<sup>2</sup>  
 Max stitch: 7.4 mm  
 Min stitch: 0.0 mm  
 Max jump: 7.0 mm  
 Total thread: 756.21ft  
 Total bobbin: 255.84ft

Stop Sequence:

#	N#	Color	St.	Code	Name	Chart
1.	5		7,536		R123 G213 B255	
2.	10		4,946		R11 G82 B153	
3.	16		1,875		R255 G203 B126	
4.	11		4,773		R224 G101 B67	
5.	4		893		R255 G223 B93	
6.	9		4,247		R255 G255 B255	
7.	14		2,129		R125 G110 B9	
8.	7		2,759		R76 G120 B54	
9.	1		2,800		R0 G87 B0	
10.	8		16,991		R0 G0 B0	

# Production Worksheet

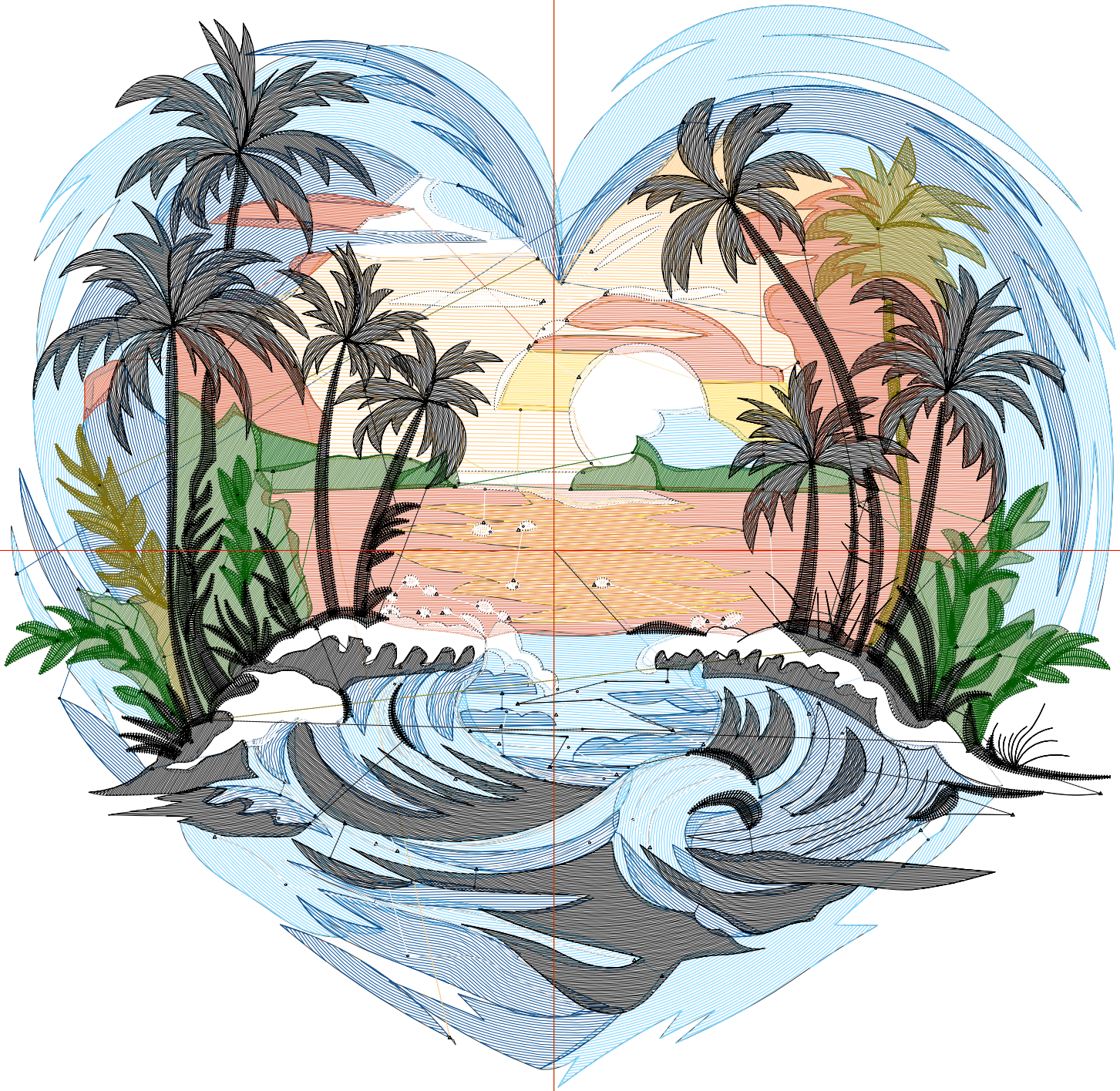
Wilcom EmbroideryStudio - Designing



Design: **7**

Title:

Stitches: 59,847  
Height: 7.31 in  
Width: 7.51 in  
Colors: 10  
Colorway: Colorway 1  
Zoom: 1:1



# Production Worksheet

Wilcom EmbroideryStudio - Designing



Design: **7**

Title:

Stitches: 59,847  
 Height: 7.31 in  
 Width: 7.51 in  
 Colors: 10  
 Colorway: Colorway 1  
 Zoom: 1:1

Machine format: Tajima  
 Color changes: 9  
 Stops: 10  
 Trims: 138  
 Appliqués: 0  
 Left: 94.3 mm  
 Right: 96.3 mm  
 Up: 93.6 mm  
 Down: 92.1 mm  
 EndX: 0.00 in  
 EndY: 0.00 in  
 Area 54.88 in<sup>2</sup>  
 Max stitch: 8.5 mm  
 Min stitch: 0.0 mm  
 Max jump: 7.0 mm  
 Total thread: 955.75ft  
 Total bobbin: 331.72ft

Stop Sequence:

#	N#	Color	St.	Code	Name	Chart
1.	5		9,331		R123 G213 B255	
2.	10		6,154		R11 G82 B153	
3.	16		2,364		R255 G203 B126	
4.	11		6,024		R224 G101 B67	
5.	4		1,123		R255 G223 B93	
6.	9		5,121		R255 G255 B255	
7.	14		2,503		R125 G110 B9	
8.	7		3,471		R76 G120 B54	
9.	1		3,258		R0 G87 B0	
10.	8		20,496		R0 G0 B0	

# Production Worksheet

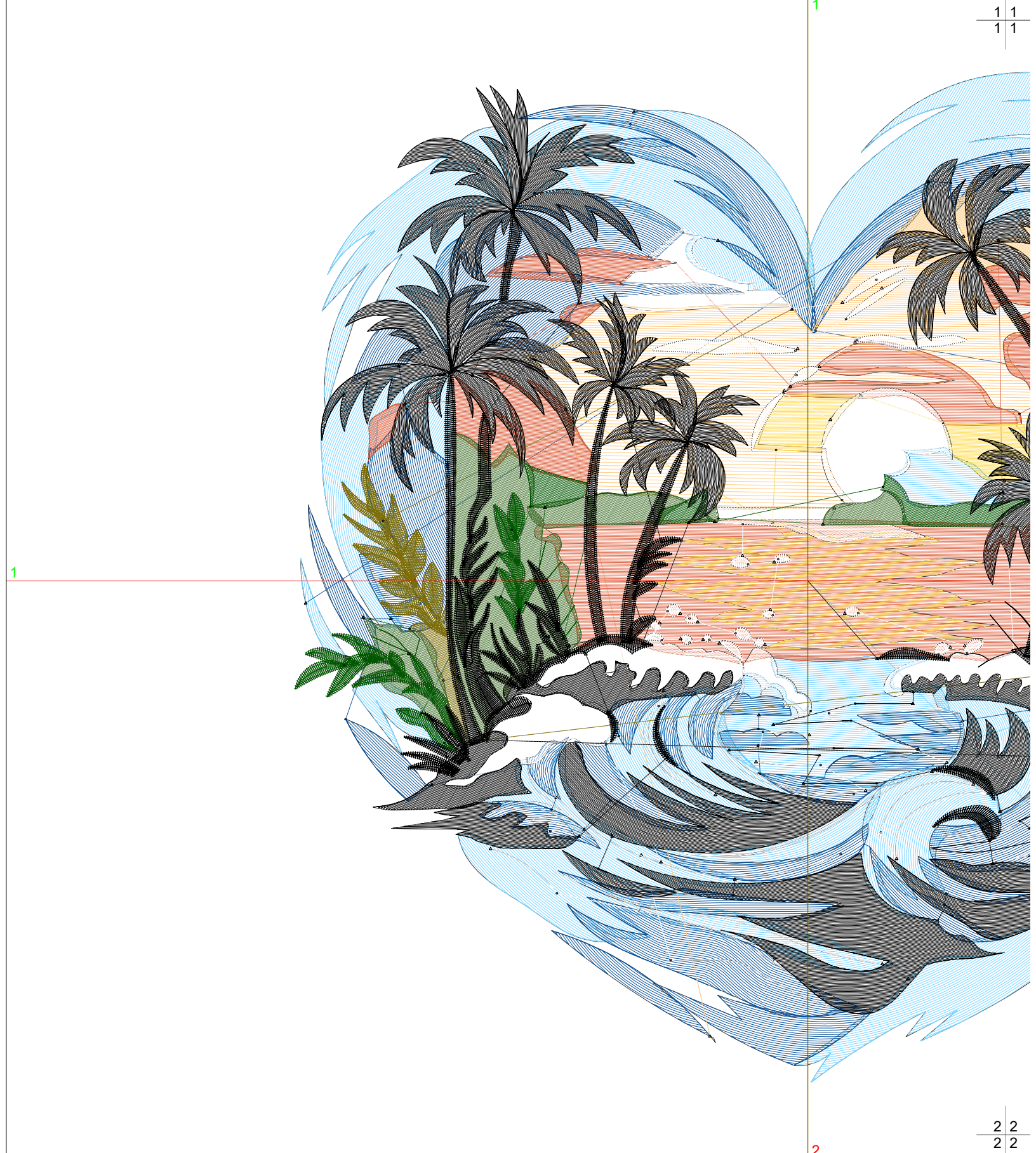
Wilcom EmbroideryStudio - Designing



Design: **8**

Title:

Stitches: 71,390  
Height: 8.29 in  
Width: 8.51 in  
Colors: 10  
Colorway: Colorway 1  
Zoom: 1:1



# Production Worksheet

Wilcom EmbroideryStudio - Designing

Stitches: 71,390  
 Height: 8.29 in  
 Width: 8.51 in  
 Colors: 10  
 Colorway: Colorway 1  
 Zoom: 1:1



Design: **8**

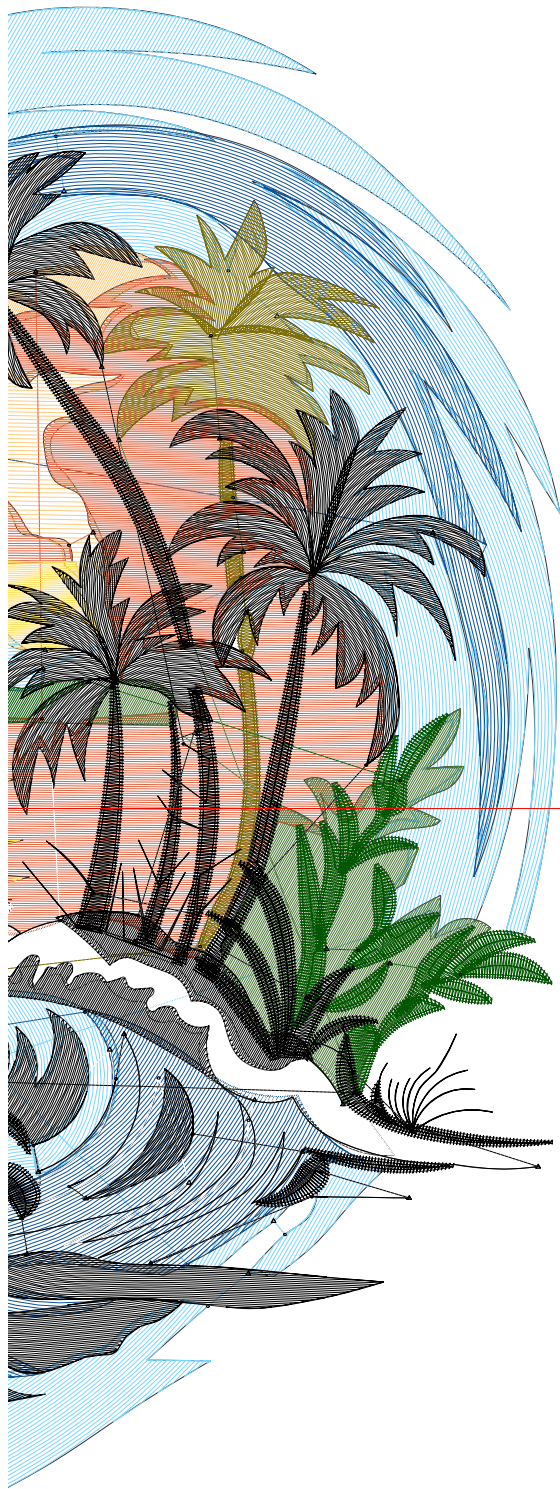
Title:

1 1  
1 1

Machine format: Tajima  
 Color changes: 9  
 Stops: 10  
 Trims: 144  
 Appliqués: 0  
 Left: 107.0 mm  
 Right: 109.0 mm  
 Up: 106.0 mm  
 Down: 104.5 mm  
 EndX: 0.00 in  
 EndY: 0.00 in  
 Area: 70.49 in<sup>2</sup>  
 Max stitch: 9.7 mm  
 Min stitch: 0.0 mm  
 Max jump: 7.0 mm  
 Total thread: 1175.97ft  
 Total bobbin: 417.33ft

Stop Sequence:

#	N#	Color	St.	Code	Name	Chart
1.	5		11,418		R123 G213 B255	
2.	10		7,516		R11 G82 B153	
3.	16		2,799		R255 G203 B126	
4.	11		7,507		R224 G101 B67	
5.	4		1,376		R255 G223 B93	
6.	9		5,922		R255 G255 B255	
7.	14		2,913		R125 G110 B9	
8.	7		4,179		R76 G120 B54	
9.	1		3,691		R0 G87 B0	
10.	8		24,067		R0 G0 B0	



2 2  
2 2