

Production Worksheet

Wilcom EmbroideryStudio - Designing



Design: **3**

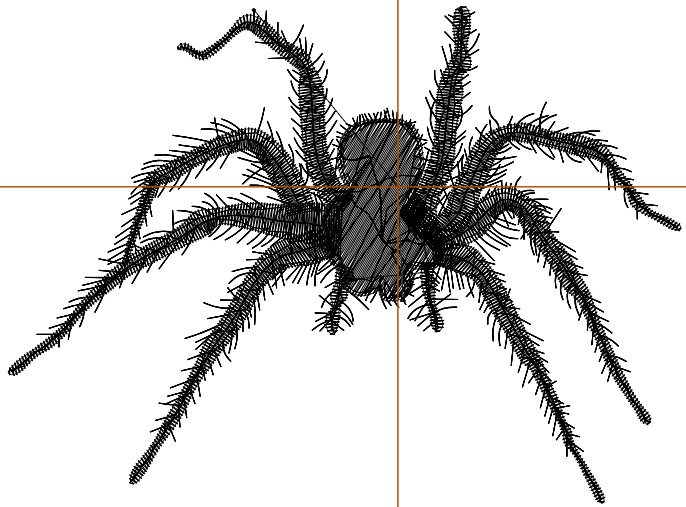
Title:

Stitches: 5,314
 Height: 2.59 in
 Width: 3.50 in
 Colors: 1
 Colorway: Colorway 1
 Zoom: 1:1

Machine format: Tajima
 Color changes: 0
 Stops: 1
 Trims: 4
 Appliqués: 0
 Left: 51.6 mm
 Right: 37.4 mm
 Up: 23.8 mm
 Down: 41.9 mm
 EndX: 0.00 in
 EndY: 0.00 in
 Area: 9.07 in²
 Max stitch: 6.8 mm
 Min stitch: 0.0 mm
 Max jump: 5.9 mm
 Total thread: 83.38ft
 Total bobbin: 28.55ft

Stop Sequence:

#	N#	Color	St.	Code	Name	Chart
1.	8	█	5,312	8	Black	Default



Production Worksheet

Wilcom EmbroideryStudio - Designing



Design: **4**

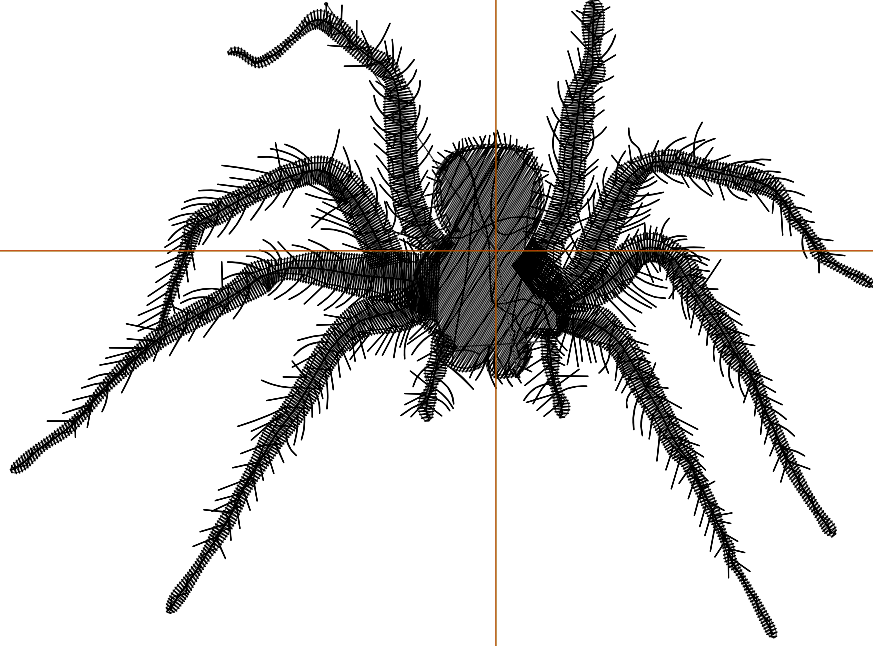
Title:

Stitches: 6,780
 Height: 3.33 in
 Width: 4.51 in
 Colors: 1
 Colorway: Colorway 1
 Zoom: 1:1

Machine format: Tajima
 Color changes: 0
 Stops: 1
 Trims: 5
 Appliqués: 0
 Left: 64.3 mm
 Right: 50.1 mm
 Up: 33.2 mm
 Down: 51.3 mm
 EndX: 0.00 in
 EndY: 0.00 in
 Area: 14.98 in²
 Max stitch: 8.7 mm
 Min stitch: 0.3 mm
 Max jump: 6.5 mm
 Total thread: 118.20ft
 Total bobbin: 43.49ft

Stop Sequence:

#	N#	Color	St.	Code	Name	Chart
1.	8	█	6,778	8	Black	Default



Production Worksheet

Wilcom EmbroideryStudio - Designing



Design: **5**

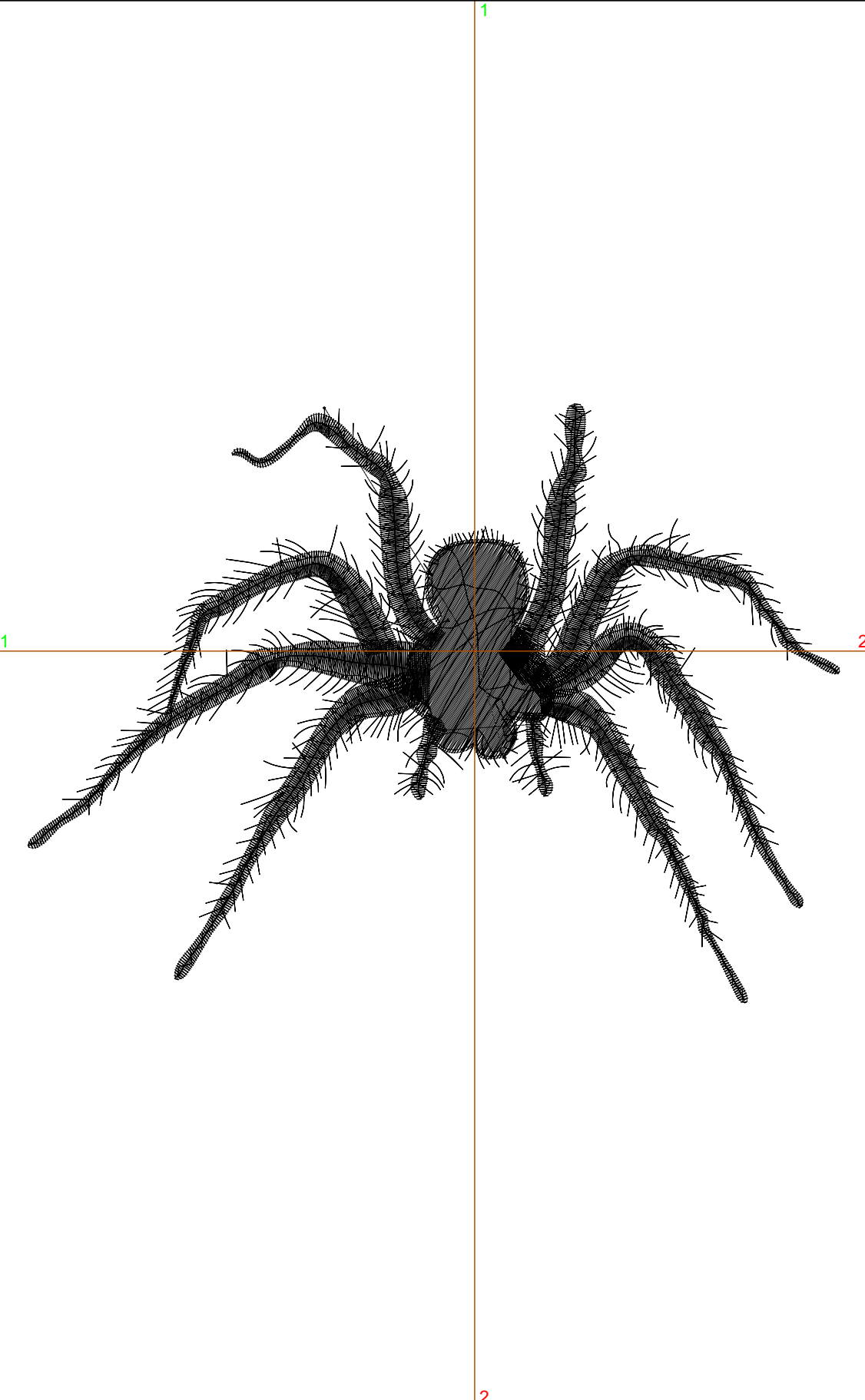
Title:

Stitches: 8,341
 Height: 4.06 in
 Width: 5.51 in
 Colors: 1
 Colorway: Colorway 1
 Zoom: 1:1

Machine format: Tajima
 Color changes: 0
 Stops: 1
 Trims: 6
 Appliqués: 0
 Left: 77.0 mm
 Right: 62.8 mm
 Up: 42.6 mm
 Down: 60.6 mm
 EndX: 0.00 in
 EndY: 0.00 in
 Area: 22.37 in²
 Max stitch: 10.5 mm
 Min stitch: 0.0 mm
 Max jump: 7.0 mm
 Total thread: 159.28ft
 Total bobbin: 61.76ft

Stop Sequence:

#	N#	Color	St.	Code	Name	Chart
1.	8	█	8,339	8	Black	Default



Production Worksheet

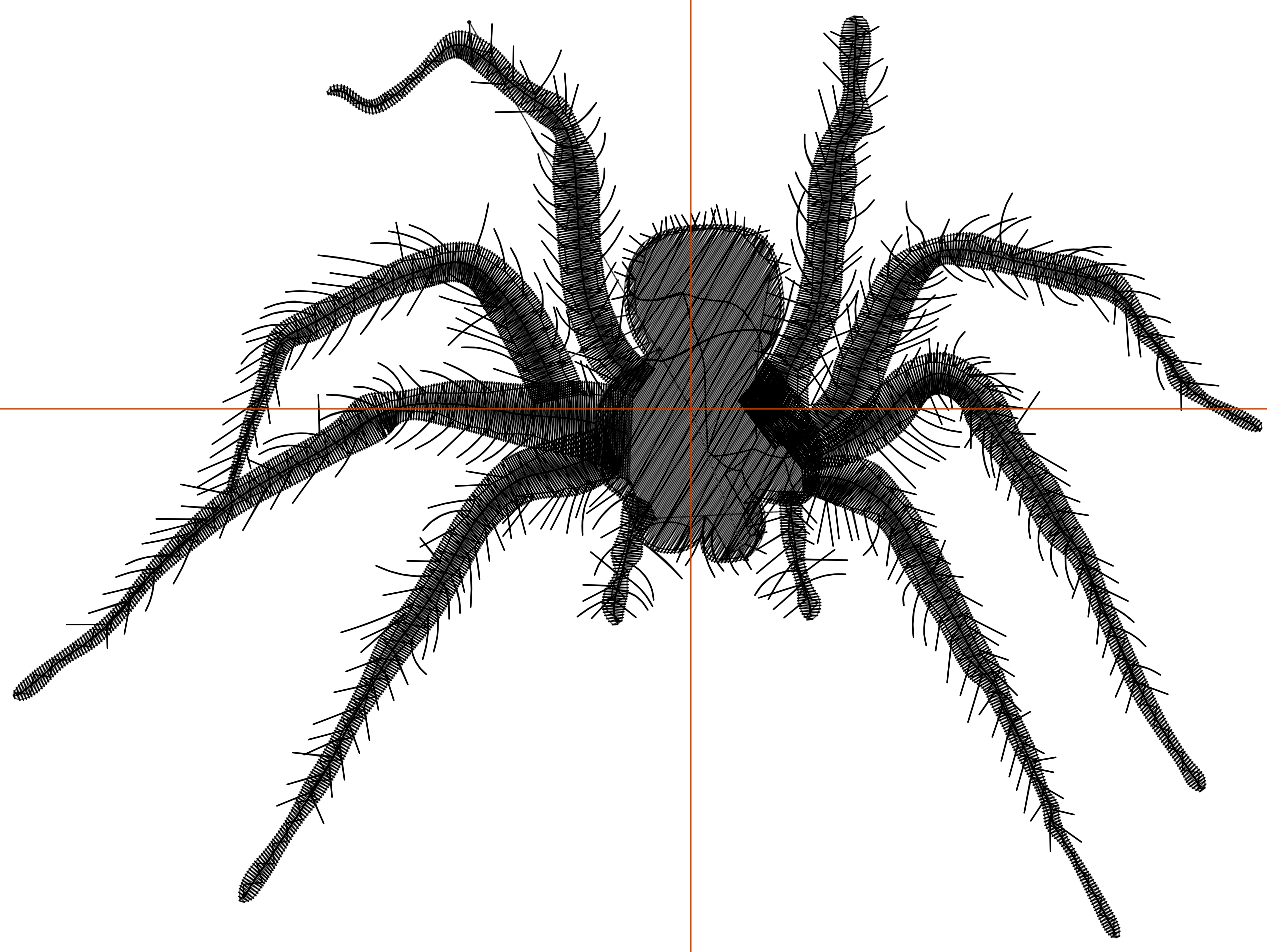
Wilcom EmbroideryStudio - Designing



Design: **6**

Title:

Stitches: 10,050
Height: 4.80 in
Width: 6.50 in
Colors: 1
Colorway: Colorway 1
Zoom: 1:1



Production Worksheet

Wilcom EmbroideryStudio - Designing



Design: **6**

Title:

Stitches: 10,050
Height: 4.80 in
Width: 6.50 in
Colors: 1
Colorway: Colorway 1
Zoom: 1:1

Machine format: Tajima
Color changes: 0
Stops: 1
Trims: 6
Appliqués: 0
Left: 89.7 mm
Right: 75.5 mm
Up: 51.9 mm
Down: 70.0 mm
EndX: 0.00 in
EndY: 0.00 in
Area 31.23 in²
Max stitch: 12.1 mm
Min stitch: 0.4 mm
Max jump: 6.4 mm
Total thread: 207.75ft
Total bobbin: 83.84ft

Stop Sequence:

#	N#	Color	St.	Code	Name	Chart
1.	8	█	10,048	8	Black	Default

Production Worksheet

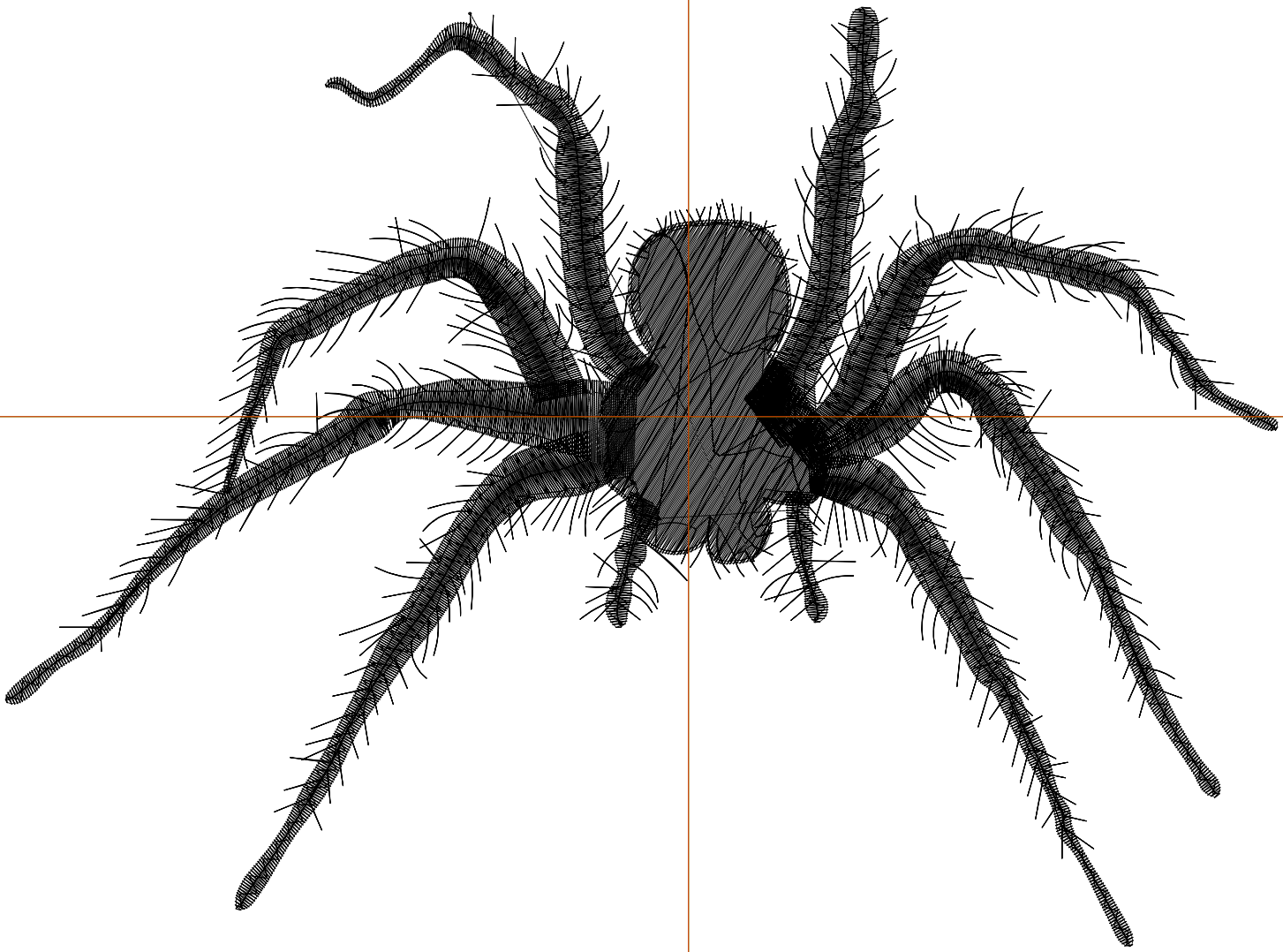
Wilcom EmbroideryStudio - Designing



Design: **7**

Title:

Stitches: 11,919
Height: 5.54 in
Width: 7.51 in
Colors: 1
Colorway: Colorway 1
Zoom: 1:1



Production Worksheet

Wilcom EmbroideryStudio - Designing



Design: **7**

Title:

Stitches: 11,919
Height: 5.54 in
Width: 7.51 in
Colors: 1
Colorway: Colorway 1
Zoom: 1:1

Machine format: Tajima
Color changes: 0
Stops: 1
Trims: 6
Appliqués: 0
Left: 102.4 mm
Right: 88.2 mm
Up: 61.3 mm
Down: 79.4 mm
EndX: 0.00 in
EndY: 0.00 in
Area 41.57 in²
Max stitch: 12.0 mm
Min stitch: 0.3 mm
Max jump: 7.0 mm
Total thread: 263.01ft
Total bobbin: 109.32ft

Stop Sequence:

#	N#	Color	St.	Code	Name	Chart
1.	8	█	11,917	8	Black	Default