

# Production Worksheet

Wilcom EmbroideryStudio - Designing



Design: **3**

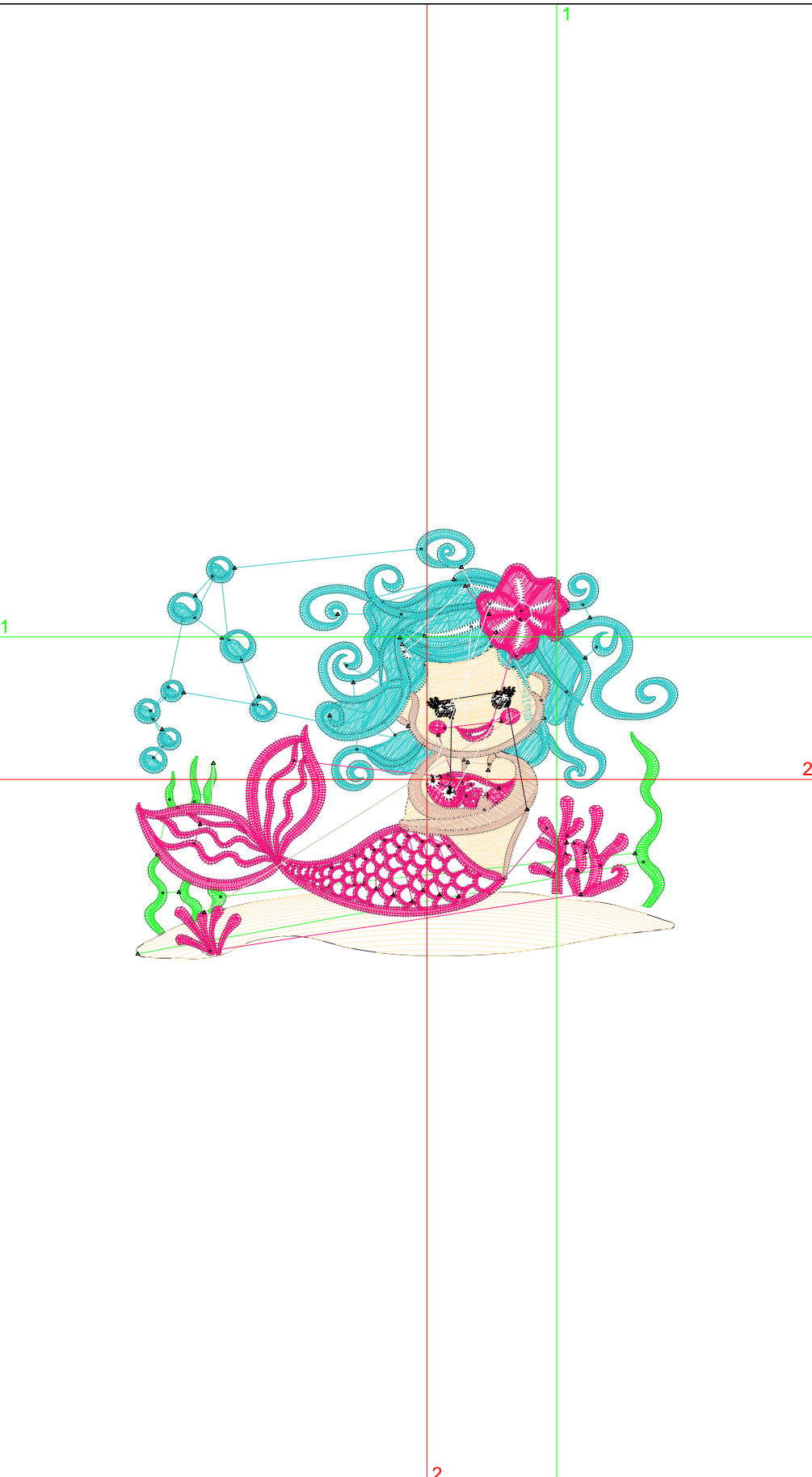
Title:

Stitches: 19,324  
 Height: 2.77 in  
 Width: 3.51 in  
 Colors: 7  
 Colorway: Colorway 1  
 Zoom: 1:1

Machine format: Tajima  
 Color changes: 7  
 Stops: 8  
 Trims: 86  
 Appliqués: 0  
 Left: 69.3 mm  
 Right: 20.0 mm  
 Up: 17.7 mm  
 Down: 52.6 mm  
 EndX: -0.84 in  
 EndY: -0.92 in  
 Area: 9.73 in<sup>2</sup>  
 Max stitch: 11.5 mm  
 Min stitch: 0.0 mm  
 Max jump: 6.9 mm  
 Total thread: 246.82ft  
 Total bobbin: 69.57ft

Stop Sequence:

#	N#	Color	St.	Code	Name	Chart
1.	5		6,673	5	Aqua	Default
2.	2		2,418		R255 G235 B196	
3.	3		689		R47 G255 B54	
4.	9		971	9	White	Default
5.	1		6,786		R255 G21 B126	
6.	4		1,176		R227 G190 B172	
7.	8		256	8	Black	Default
8.	9		353	9	White	Default



# Production Worksheet

Wilcom EmbroideryStudio - Designing



Design: **4**

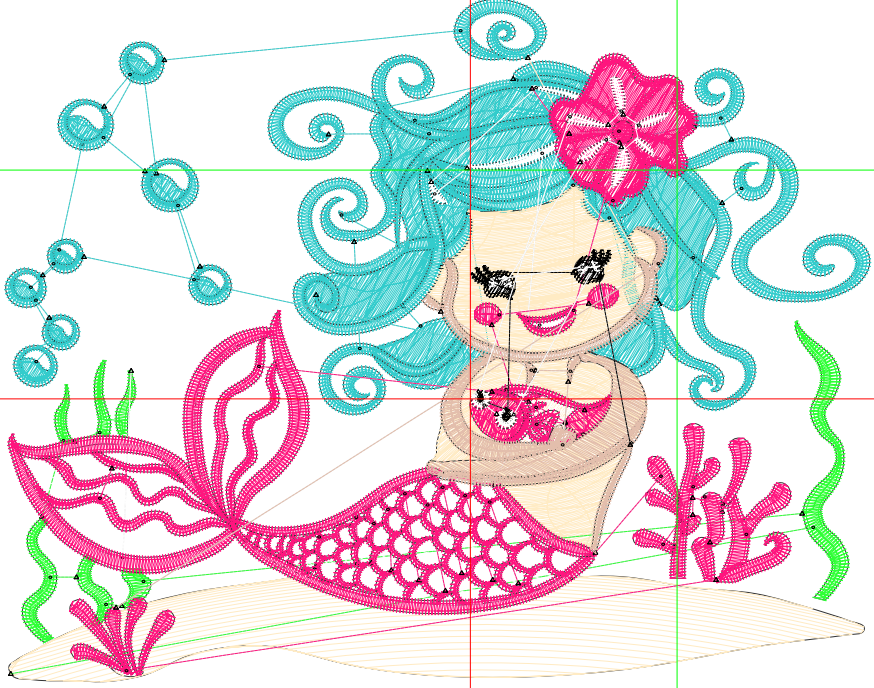
Title:

Stitches: 25,039  
 Height: 3.56 in  
 Width: 4.51 in  
 Colors: 7  
 Colorway: Colorway 1  
 Zoom: 1:1

Machine format: Tajima  
 Color changes: 7  
 Stops: 8  
 Trims: 94  
 Appliqués: 0  
 Left: 89.0 mm  
 Right: 25.6 mm  
 Up: 22.8 mm  
 Down: 67.7 mm  
 EndX: -1.08 in  
 EndY: -1.19 in  
 Area: 16.07 in<sup>2</sup>  
 Max stitch: 6.8 mm  
 Min stitch: 0.0 mm  
 Max jump: 6.8 mm  
 Total thread: 344.19ft  
 Total bobbin: 105.05ft

Stop Sequence:

#	N#	Color	St.	Code	Name	Chart
1.	5		8,517	5	Aqua	Default
2.	2		3,500		R255 G235 B196	
3.	3		857		R47 G255 B54	
4.	9		1,329	9	White	Default
5.	1		8,551		R255 G21 B126	
6.	4		1,507		R227 G190 B172	
7.	8		320	8	Black	Default
8.	9		456	9	White	Default



# Production Worksheet

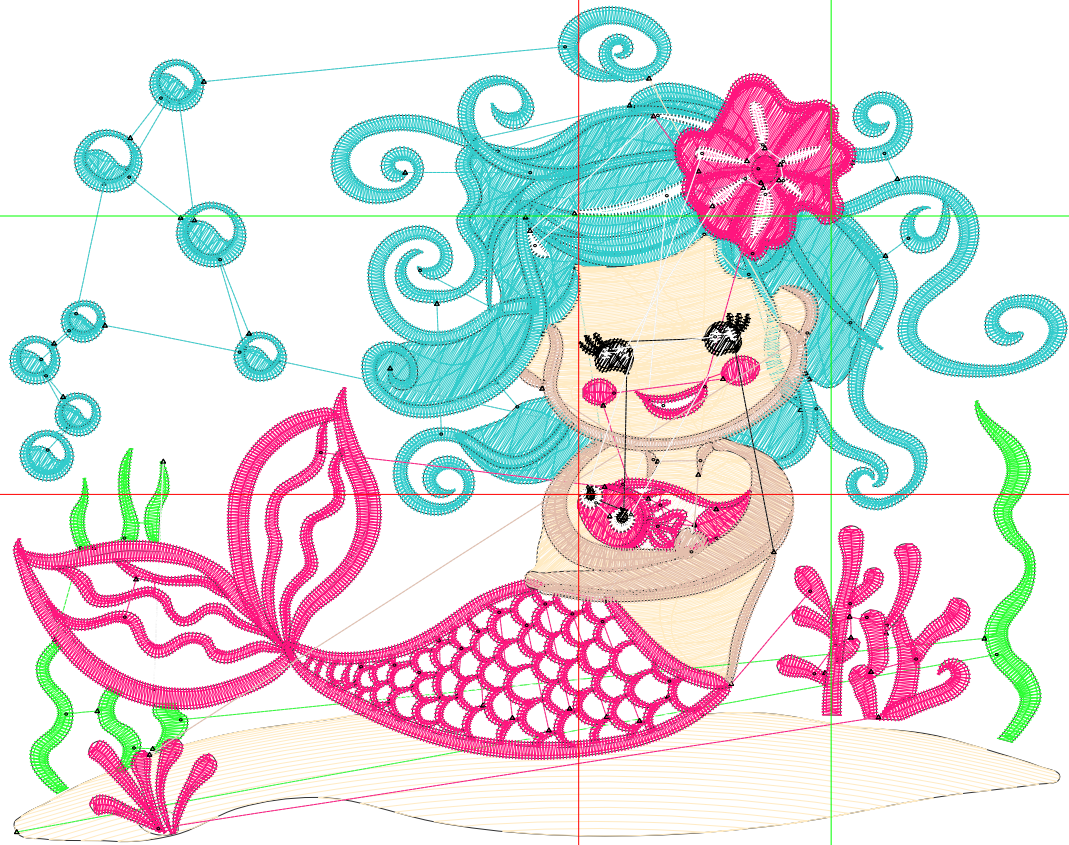
Wilcom EmbroideryStudio - Designing



Design: **5**

Title:

Stitches: 31,208  
Height: 4.35 in  
Width: 5.51 in  
Colors: 7  
Colorway: Colorway 1  
Zoom: 1:1



# Production Worksheet

Wilcom EmbroideryStudio - Designing



Design: **5**

Title:

Stitches: 31,208  
 Height: 4.35 in  
 Width: 5.51 in  
 Colors: 7  
 Colorway: Colorway 1  
 Zoom: 1:1

Machine format: Tajima  
 Color changes: 7  
 Stops: 8  
 Trims: 100  
 Appliqués: 0  
 Left: 108.8 mm  
 Right: 31.3 mm  
 Up: 27.7 mm  
 Down: 82.7 mm  
 EndX: -1.31 in  
 EndY: -1.45 in  
 Area 23.97 in<sup>2</sup>  
 Max stitch: 8.7 mm  
 Min stitch: 0.0 mm  
 Max jump: 6.8 mm  
 Total thread: 457.58ft  
 Total bobbin: 148.25ft

Stop Sequence:

#	N#	Color	St.	Code	Name	Chart
1.	5		10,531	5	Aqua	Default
2.	2		4,805		R255 G235 B196	
3.	3		1,015		R47 G255 B54	
4.	9		1,734	9	White	Default
5.	1		10,330		R255 G21 B126	
6.	4		1,874		R227 G190 B172	
7.	8		370	8	Black	Default
8.	9		547	9	White	Default

# Production Worksheet

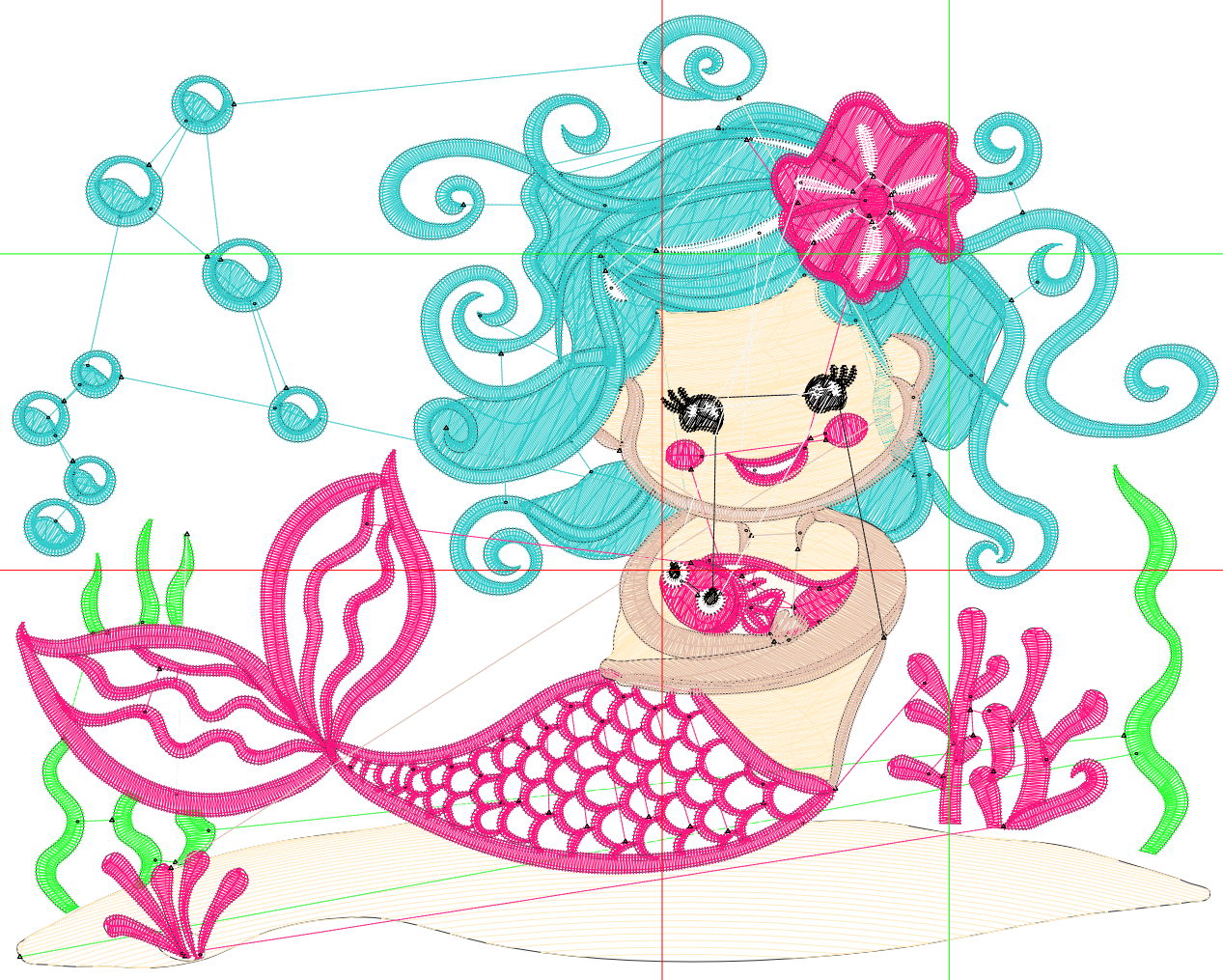
Wilcom EmbroideryStudio - Designing



Design: **6**

Title:

Stitches: 37,790  
Height: 5.14 in  
Width: 6.51 in  
Colors: 7  
Colorway: Colorway 1  
Zoom: 1:1



# Production Worksheet

Wilcom EmbroideryStudio - Designing



Design: **6**

Title:

Stitches: 37,790  
 Height: 5.14 in  
 Width: 6.51 in  
 Colors: 7  
 Colorway: Colorway 1  
 Zoom: 1:1

Machine format: Tajima  
 Color changes: 7  
 Stops: 8  
 Trims: 107  
 Appliqués: 0  
 Left: 128.5 mm  
 Right: 36.9 mm  
 Up: 32.8 mm  
 Down: 97.8 mm  
 EndX: -1.55 in  
 EndY: -1.71 in  
 Area 33.48 in<sup>2</sup>  
 Max stitch: 8.6 mm  
 Min stitch: 0.0 mm  
 Max jump: 7.0 mm  
 Total thread: 586.58ft  
 Total bobbin: 199.10ft

Stop Sequence:

#	N#	Color	St.	Code	Name	Chart
1.	5		12,525	5	Aqua	Default
2.	2		6,283		R255 G235 B196	
3.	3		1,186		R47 G255 B54	
4.	9		2,202	9	White	Default
5.	1		12,269		R255 G21 B126	
6.	4		2,250		R227 G190 B172	
7.	8		455	8	Black	Default
8.	9		618	9	White	Default

# Production Worksheet

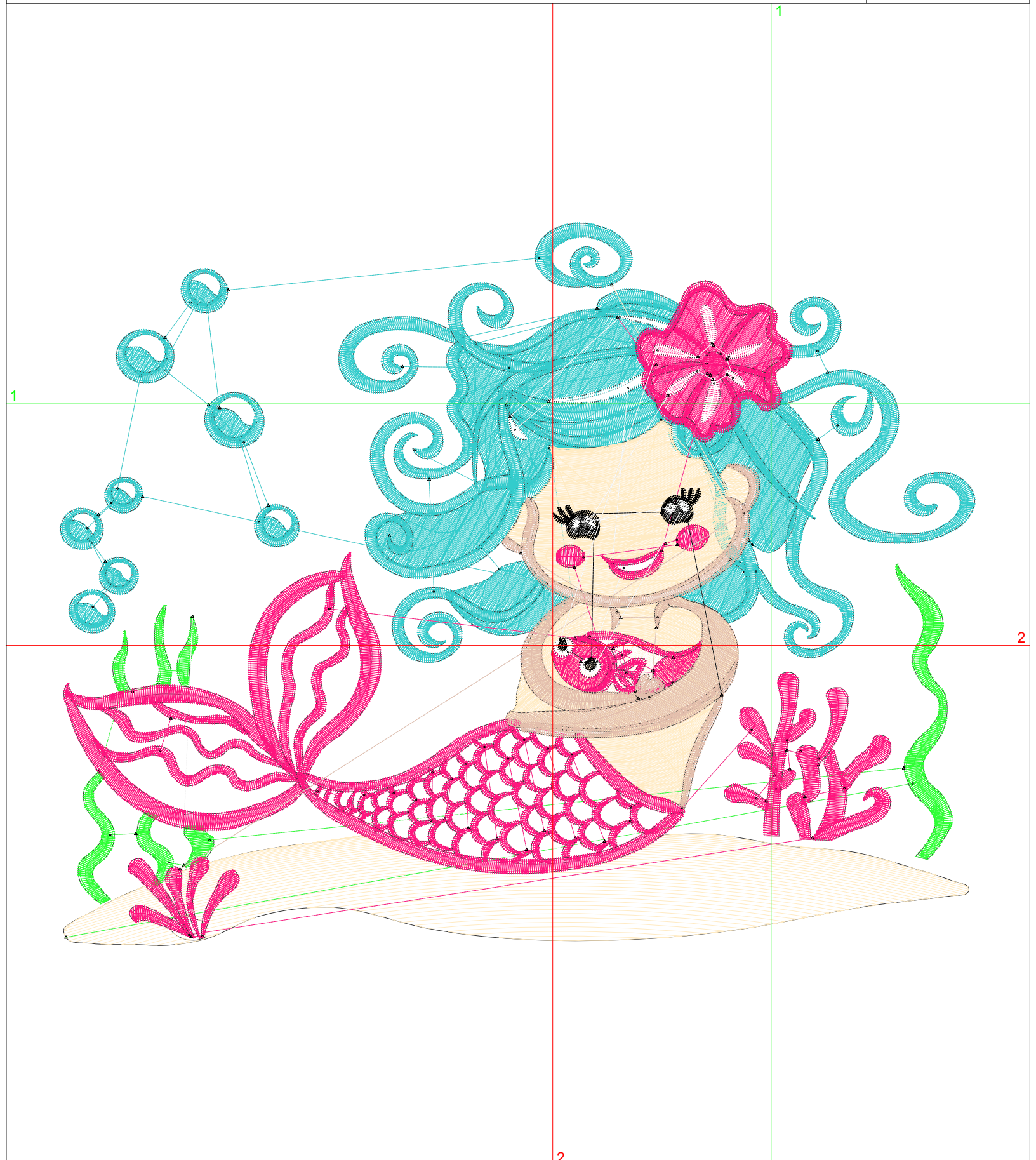
Wilcom EmbroideryStudio - Designing



Design: **7**

Title:

Stitches: 44,676  
Height: 5.93 in  
Width: 7.51 in  
Colors: 7  
Colorway: Colorway 1  
Zoom: 1:1



# Production Worksheet

Wilcom EmbroideryStudio - Designing



Design: **7**

Title:

Stitches: 44,676  
 Height: 5.93 in  
 Width: 7.51 in  
 Colors: 7  
 Colorway: Colorway 1  
 Zoom: 1:1

Machine format: Tajima  
 Color changes: 7  
 Stops: 8  
 Trims: 107  
 Appliqués: 0  
 Left: 148.2 mm  
 Right: 42.6 mm  
 Up: 37.8 mm  
 Down: 112.8 mm  
 EndX: -1.79 in  
 EndY: -1.98 in  
 Area 44.54 in<sup>2</sup>  
 Max stitch: 8.4 mm  
 Min stitch: 0.0 mm  
 Max jump: 7.0 mm  
 Total thread: 730.05ft  
 Total bobbin: 257.35ft

Stop Sequence:

#	N#	Color	St.	Code	Name	Chart
1.	5		14,666	5	Aqua	Default
2.	2		7,892		R255 G235 B196	
3.	3		1,355		R47 G255 B54	
4.	9		2,755	9	White	Default
5.	1		14,124		R255 G21 B126	
6.	4		2,668		R227 G190 B172	
7.	8		521	8	Black	Default
8.	9		693	9	White	Default