

Approval Sheet

Wilcom EmbroideryStudio - Designing



Design: **3**

Title:

Height: 79.9 mm
Width: 88.8 mm
Colors: 8
Colorway: Colorway 1
Zoom: 1:1



Product type:
Product:
Total qty:
Product colors:
Position:

Terms and Conditions:

Approved By:

Date:

Production Worksheet

Wilcom EmbroideryStudio - Designing



Design: **3**

Title:

Stitches: 15,742

Height: 79.9 mm

Width: 88.8 mm

Colors: 8

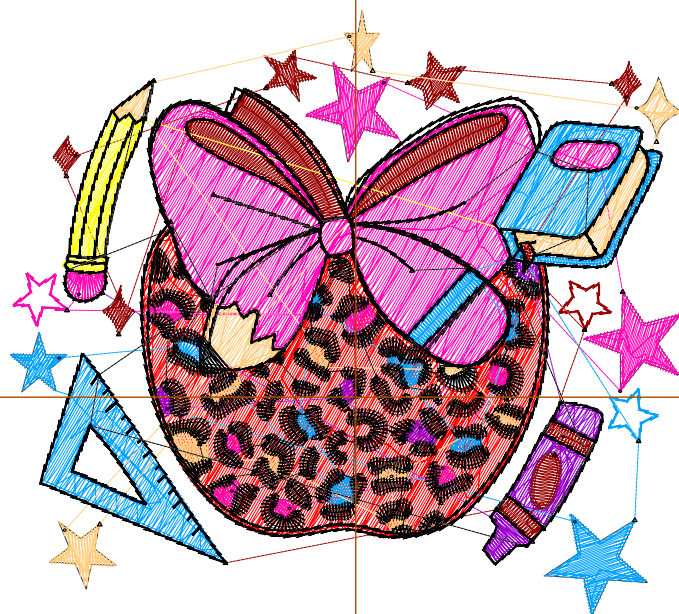
Colorway: Colorway 1

Zoom: 1:1

Machine format: Tajima
 Color changes: 7
 Stops: 8
 Trims: 101
 Appliqués: 0
 Left: 45.7 mm
 Right: 43.1 mm
 Up: 51.2 mm
 Down: 28.8 mm
 EndX: 0.0 mm
 EndY: 0.0 mm
 Area: 7097.7 mm²
 Max stitch: 7.0 mm
 Min stitch: 0.0 mm
 Max jump: 7.0 mm
 Total thread: 75.14m
 Total bobbin: 25.39m

Stop Sequence:

#	N#	Color	St.	Code	Name	Chart
1.	3		1,896	3	Red	Default
2.	1		2,671		R255 G9 B181	
3.	13		515	13	Purple	Default
4.	2		1,860		R2 G162 B255	
5.	11		1,083	11	Dark Red	Default
6.	16		1,023	16	Sand	Default
7.	4		250	4	Yellow	Default
8.	8		6,442	8	Black	Default



Color Film

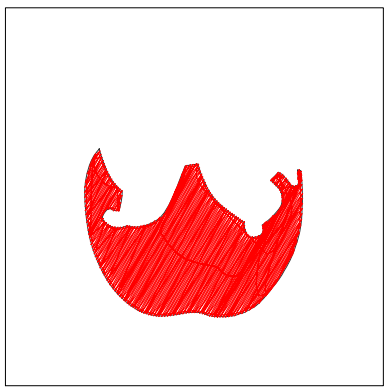
Wilcom EmbroideryStudio - Designing



Design: 3

Title:

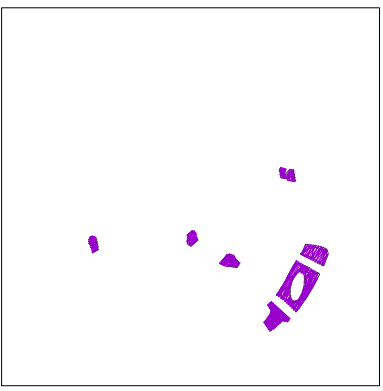
Stitches: 15,742
 Height: 79.9 mm
 Width: 88.8 mm
 Colors: 8
 Colorway: Colorway 1
 Zoom: 0.54



Stop #: 1
 Element:
 Code: 3
 Name: Red
 Chart: Default
 Stitches: 1,896
 Thread used: 11.86m



Stop #: 2
 Element:
 Code:
 Name: R255 G9 B181
 Chart:
 Stitches: 2,671
 Thread used: 13.62m



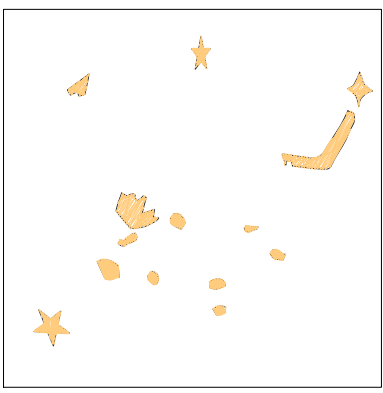
Stop #: 3
 Element:
 Code: 13
 Name: Purple
 Chart: Default
 Stitches: 515
 Thread used: 2.26m



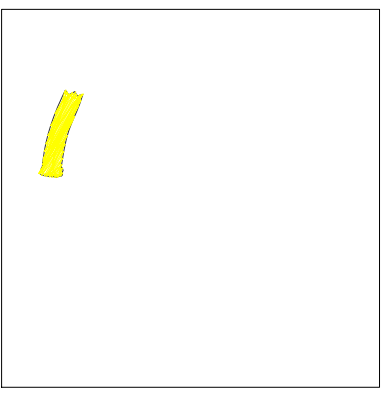
Stop #: 4
 Element:
 Code:
 Name: R2 G162 B255
 Chart:
 Stitches: 1,860
 Thread used: 8.60m



Stop #: 5
 Element:
 Code: 11
 Name: Dark Red
 Chart: Default
 Stitches: 1,083
 Thread used: 5.64m



Stop #: 6
 Element:
 Code: 16
 Name: Sand
 Chart: Default
 Stitches: 1,023
 Thread used: 4.47m



Stop #: 7
 Element:
 Code: 4
 Name: Yellow
 Chart: Default
 Stitches: 250
 Thread used: 1.32m



Stop #: 8
 Element:
 Code: 8
 Name: Black
 Chart: Default
 Stitches: 6,442
 Thread used: 26.57m

Production Summary

Wilcom EmbroideryStudio - Designing



Design: **3**

Title:

Stitches: 15,742
 Height: 79.9 mm
 Width: 88.8 mm
 Colors: 8



Machine format: Tajima
 Color changes: 7
 Stops: 8
 Trims: 101
 Hoop: <None>
 Max stitch: 7.0 mm
 Min stitch: 0.0 mm
 Max jump: 7.0 mm

Left: 45.7 mm
 Right: 43.1 mm
 Up: 51.2 mm
 Down: 28.8 mm
 EndX: 0.0 mm
 EndY: 0.0 mm
 Area: 7097.7 mm²
 Total thread: 75.14m
 Total bobbin: 25.39m

Colorway		Colorway 1	
Background			
Product		Blanks\Blank	
Stop	Color	Stitches	
1	3	1,896	3 Red Default
2	1	2,671	R255 G9 B181
3	13	515	13 Purple Default
4	2	1,860	R2 G162 B255
5	11	1,083	11 Dark Red Default
6	16	1,023	16 Sand Default
7	4	250	4 Yellow Default
8	8	6,442	8 Black Default

Approval Sheet

Wilcom EmbroideryStudio - Designing



Design: **4**

Title:

Height: 102.8 mm
Width: 114.2 mm
Colors: 8
Colorway: Colorway 1
Zoom: 1:1



Product type:
Product:
Total qty:
Product colors:
Position:

Terms and Conditions:

Approved By:

Date:

Production Worksheet

Wilcom EmbroideryStudio - Designing



Design: **4**

Title:

Stitches: 20,650
 Height: 102.8 mm
 Width: 114.2 mm
 Colors: 8
 Colorway: Colorway 1
 Zoom: 1:1

Machine format: Tajima
 Color changes: 7
 Stops: 8
 Trims: 121
 Appliqués: 0
 Left: 58.4 mm
 Right: 55.8 mm
 Up: 62.6 mm
 Down: 40.2 mm
 EndX: 0.0 mm
 EndY: 0.0 mm
 Area: 11736.7 mm²
 Max stitch: 9.8 mm
 Min stitch: 0.0 mm
 Max jump: 6.9 mm
 Total thread: 106.66m
 Total bobbin: 38.26m

Stop Sequence:

#	N#	Color	St.	Code	Name	Chart
1.	3		2,858	3	Red	Default
2.	1		3,667		R255 G9 B181	
3.	13		633	13	Purple	Default
4.	2		2,486		R2 G162 B255	
5.	11		1,373	11	Dark Red	Default
6.	16		1,305	16	Sand	Default
7.	4		295	4	Yellow	Default
8.	8		8,031	8	Black	Default



Color Film

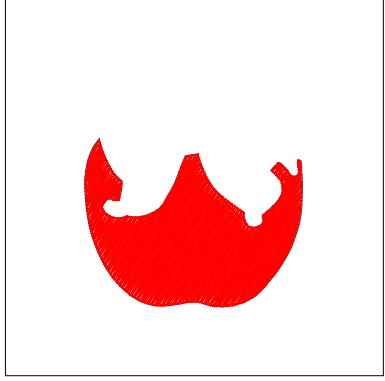
Wilcom EmbroideryStudio - Designing



Design: 4

Title:

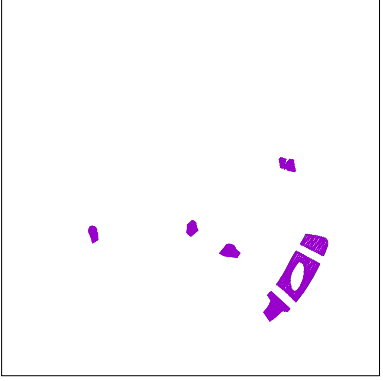
Stitches: 20,650
 Height: 102.8 mm
 Width: 114.2 mm
 Colors: 8
 Colorway: Colorway 1
 Zoom: 0.42



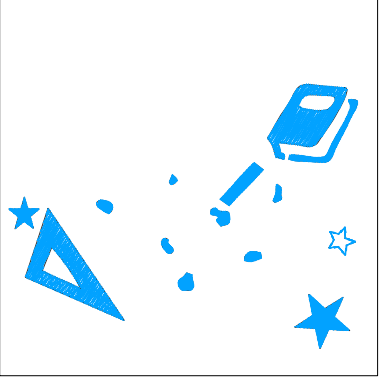
Stop #: 1
 Element:
 Code: 3
 Name: Red
 Chart: Default
 Stitches: 2,858
 Thread used: 18.65m



Stop #: 2
 Element:
 Code:
 Name: R255 G9 B181
 Chart:
 Stitches: 3,667
 Thread used: 20.09m



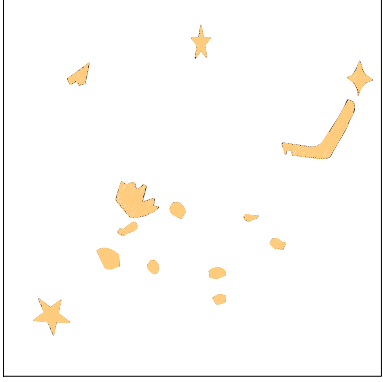
Stop #: 3
 Element:
 Code: 13
 Name: Purple
 Chart: Default
 Stitches: 633
 Thread used: 3.11m



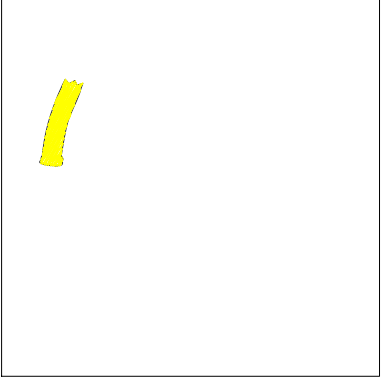
Stop #: 4
 Element:
 Code:
 Name: R2 G162 B255
 Chart:
 Stitches: 2,486
 Thread used: 12.53m



Stop #: 5
 Element:
 Code: 11
 Name: Dark Red
 Chart: Default
 Stitches: 1,373
 Thread used: 8.29m



Stop #: 6
 Element:
 Code: 16
 Name: Sand
 Chart: Default
 Stitches: 1,305
 Thread used: 6.32m



Stop #: 7
 Element:
 Code: 4
 Name: Yellow
 Chart: Default
 Stitches: 295
 Thread used: 1.66m



Stop #: 8
 Element:
 Code: 8
 Name: Black
 Chart: Default
 Stitches: 8,031
 Thread used: 35.21m

Production Summary

Wilcom EmbroideryStudio - Designing



Design: **4**

Title:

Stitches: 20,650
 Height: 102.8 mm
 Width: 114.2 mm
 Colors: 8



Machine format: Tajima
 Color changes: 7
 Stops: 8
 Trims: 121
 Hoop: <None>
 Max stitch: 9.8 mm
 Min stitch: 0.0 mm
 Max jump: 6.9 mm

Left: 58.4 mm
 Right: 55.8 mm
 Up: 62.6 mm
 Down: 40.2 mm
 EndX: 0.0 mm
 EndY: 0.0 mm
 Area: 11736.7 mm²
 Total thread: 106.66m
 Total bobbin: 38.26m

Colorway		Colorway 1	
Background			
Product		Blanks\Blank	
Stop	Color	Stitches	
1	3	2,858	3 Red Default
2	1	3,667	R255 G9 B181
3	13	633	13 Purple Default
4	2	2,486	R2 G162 B255
5	11	1,373	11 Dark Red Default
6	16	1,305	16 Sand Default
7	4	295	4 Yellow Default
8	8	8,031	8 Black Default

Approval Sheet

Wilcom EmbroideryStudio - Designing



Design: **5**

Title:

Height: 125.5 mm
Width: 139.6 mm
Colors: 8
Colorway: Colorway 1
Zoom: 1:1



Product type:
Product:
Total qty:
Product colors:
Position:

Terms and Conditions:

Approved By:

Date:

Production Worksheet

Wilcom EmbroideryStudio - Designing



Design: **5**

Title:

Stitches: 26,363
Height: 125.5 mm
Width: 139.6 mm
Colors: 8
Colorway: Colorway 1
Zoom: 1:1



Production Worksheet

Wilcom EmbroideryStudio - Designing



Design: **5**

Title:

Stitches: 26,363
 Height: 125.5 mm
 Width: 139.6 mm
 Colors: 8
 Colorway: Colorway 1
 Zoom: 1:1

Machine format: Tajima
 Color changes: 7
 Stops: 8
 Trims: 136
 Appliqués: 0
 Left: 71.1 mm
 Right: 68.5 mm
 Up: 74.0 mm
 Down: 51.5 mm
 EndX: 0.0 mm
 EndY: 0.0 mm
 Area 17522.2 mm²
 Max stitch: 12.0 mm
 Min stitch: 0.1 mm
 Max jump: 7.0 mm
 Total thread: 145.11m
 Total bobbin: 54.27m

Stop Sequence:

#	N#	Color	St.	Code	Name	Chart
1.	3		4,016	3	Red	Default
2.	1		4,949		R255 G9 B181	
3.	13		797	13	Purple	Default
4.	2		3,198		R2 G162 B255	
5.	11		1,683	11	Dark Red	Default
6.	16		1,668	16	Sand	Default
7.	4		398	4	Yellow	Default
8.	8		9,652	8	Black	Default

Color Film

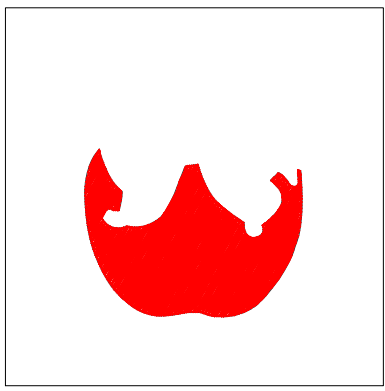
Wilcom EmbroideryStudio - Designing



Design: 5

Title:

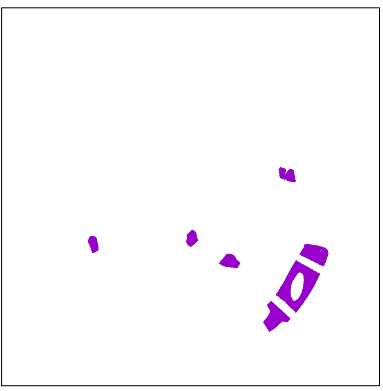
Stitches: 26,363
 Height: 125.5 mm
 Width: 139.6 mm
 Colors: 8
 Colorway: Colorway 1
 Zoom: 0.34



Stop #: 1
 Element:
 Code: 3
 Name: Red
 Chart: Default
 Stitches: 4,016
 Thread used: 26.87m



Stop #: 2
 Element:
 Code:
 Name: R255 G9 B181
 Chart:
 Stitches: 4,949
 Thread used: 28.68m



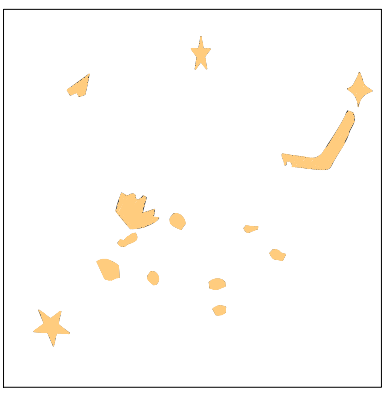
Stop #: 3
 Element:
 Code: 13
 Name: Purple
 Chart: Default
 Stitches: 797
 Thread used: 4.24m



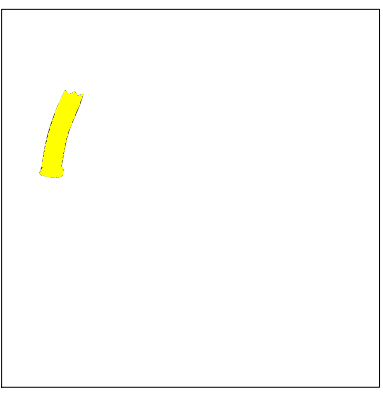
Stop #: 4
 Element:
 Code:
 Name: R2 G162 B255
 Chart:
 Stitches: 3,198
 Thread used: 17.21m



Stop #: 5
 Element:
 Code: 11
 Name: Dark Red
 Chart: Default
 Stitches: 1,683
 Thread used: 11.52m



Stop #: 6
 Element:
 Code: 16
 Name: Sand
 Chart: Default
 Stitches: 1,668
 Thread used: 8.70m



Stop #: 7
 Element:
 Code: 4
 Name: Yellow
 Chart: Default
 Stitches: 398
 Thread used: 2.34m



Stop #: 8
 Element:
 Code: 8
 Name: Black
 Chart: Default
 Stitches: 9,652
 Thread used: 44.75m

Production Summary

Wilcom EmbroideryStudio - Designing



Design: **5**

Title:

Stitches: 26,363
 Height: 125.5 mm
 Width: 139.6 mm
 Colors: 8



Machine format: Tajima
 Color changes: 7
 Stops: 8
 Trims: 136
 Hoop: <None>
 Max stitch: 12.0 mm
 Min stitch: 0.1 mm
 Max jump: 7.0 mm

Left: 71.1 mm
 Right: 68.5 mm
 Up: 74.0 mm
 Down: 51.5 mm
 EndX: 0.0 mm
 EndY: 0.0 mm
 Area: 17522.2 mm²
 Total thread: 145.11m
 Total bobbin: 54.27m

Colorway		Colorway 1	
Background			
Product		Blanks\Blank	
Stop	Color	Stitches	
1	3	4,016	3 Red Default
2	1	4,949	R255 G9 B181
3	13	797	13 Purple Default
4	2	3,198	R2 G162 B255
5	11	1,683	11 Dark Red Default
6	16	1,668	16 Sand Default
7	4	398	4 Yellow Default
8	8	9,652	8 Black Default

Approval Sheet

Wilcom EmbroideryStudio - Designing



Design: 6

Title:

Height: 148.6 mm
Width: 165.1 mm
Colors: 8
Colorway: Colorway 1
Zoom: 1:1



Product type:
Product:
Total qty:
Product colors:
Position:

Terms and Conditions:

Approved By:

Date:

Production Worksheet

Wilcom EmbroideryStudio - Designing



Design: **6**

Title:

Stitches: 32,341
Height: 148.6 mm
Width: 165.1 mm
Colors: 8
Colorway: Colorway 1
Zoom: 1:1



Production Worksheet

Wilcom EmbroideryStudio - Designing



Design: **6**

Title:

Stitches: 32,341
 Height: 148.6 mm
 Width: 165.1 mm
 Colors: 8
 Colorway: Colorway 1
 Zoom: 1:1

Machine format: Tajima
 Color changes: 7
 Stops: 8
 Trims: 142
 Appliqués: 0
 Left: 83.8 mm
 Right: 81.3 mm
 Up: 85.5 mm
 Down: 63.2 mm
 EndX: 0.0 mm
 EndY: 0.0 mm
 Area 24538.7 mm²
 Max stitch: 11.9 mm
 Min stitch: 0.0 mm
 Max jump: 7.0 mm
 Total thread: 188.35m
 Total bobbin: 72.81m

Stop Sequence:

#	N#	Color	St.	Code	Name	Chart
1.	3		5,371	3	Red	Default
2.	1		6,335		R255 G9 B181	
3.	13		962	13	Purple	Default
4.	2		3,978		R2 G162 B255	
5.	11		1,965	11	Dark Red	Default
6.	16		1,997	16	Sand	Default
7.	4		540	4	Yellow	Default
8.	8		11,191	8	Black	Default

Color Film

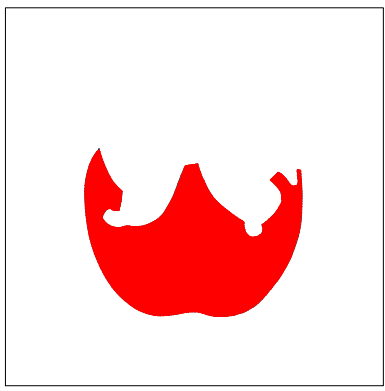
Wilcom EmbroideryStudio - Designing



Design: 6

Title:

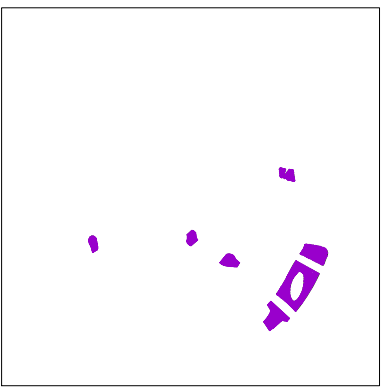
Stitches: 32,341
Height: 148.6 mm
Width: 165.1 mm
Colors: 8
Colorway: Colorway 1
Zoom: 0.29



Stop #: 1
Element:
Code: 3
Name: Red
Chart: Default
Stitches: 5,371
Thread used: 36.69m



Stop #: 2
Element:
Code:
Name: R255 G9 B181
Chart:
Stitches: 6,335
Thread used: 38.19m



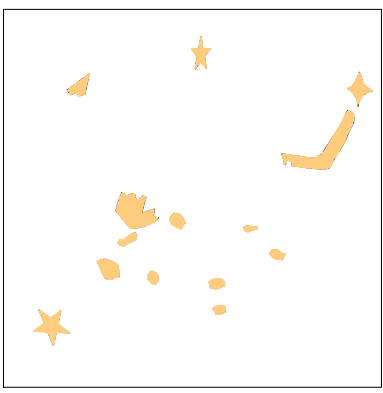
Stop #: 3
Element:
Code: 13
Name: Purple
Chart: Default
Stitches: 962
Thread used: 5.52m



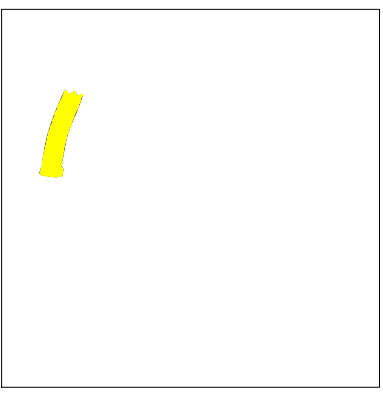
Stop #: 4
Element:
Code:
Name: R2 G162 B255
Chart:
Stitches: 3,978
Thread used: 22.61m



Stop #: 5
Element:
Code: 11
Name: Dark Red
Chart: Default
Stitches: 1,965
Thread used: 15.20m



Stop #: 6
Element:
Code: 16
Name: Sand
Chart: Default
Stitches: 1,997
Thread used: 11.18m



Stop #: 7
Element:
Code: 4
Name: Yellow
Chart: Default
Stitches: 540
Thread used: 3.26m



Stop #: 8
Element:
Code: 8
Name: Black
Chart: Default
Stitches: 11,191
Thread used: 54.91m

Production Summary

Wilcom EmbroideryStudio - Designing



Design: **6**

Title:

Stitches: 32,341
 Height: 148.6 mm
 Width: 165.1 mm
 Colors: 8



Machine format: Tajima
 Color changes: 7
 Stops: 8
 Trims: 142
 Hoop: <None>
 Max stitch: 11.9 mm
 Min stitch: 0.0 mm
 Max jump: 7.0 mm

Left: 83.8 mm
 Right: 81.3 mm
 Up: 85.5 mm
 Down: 63.2 mm
 EndX: 0.0 mm
 EndY: 0.0 mm
 Area: 24538.7 mm²
 Total thread: 188.35m
 Total bobbin: 72.81m

Colorway		Colorway 1	
Background			
Product		Blanks\Blank	
Stop	Color	Stitches	
1	3	5,371	3 Red Default
2	1	6,335	R255 G9 B181
3	13	962	13 Purple Default
4	2	3,978	R2 G162 B255
5	11	1,965	11 Dark Red Default
6	16	1,997	16 Sand Default
7	4	540	4 Yellow Default
8	8	11,191	8 Black Default

Approval Sheet

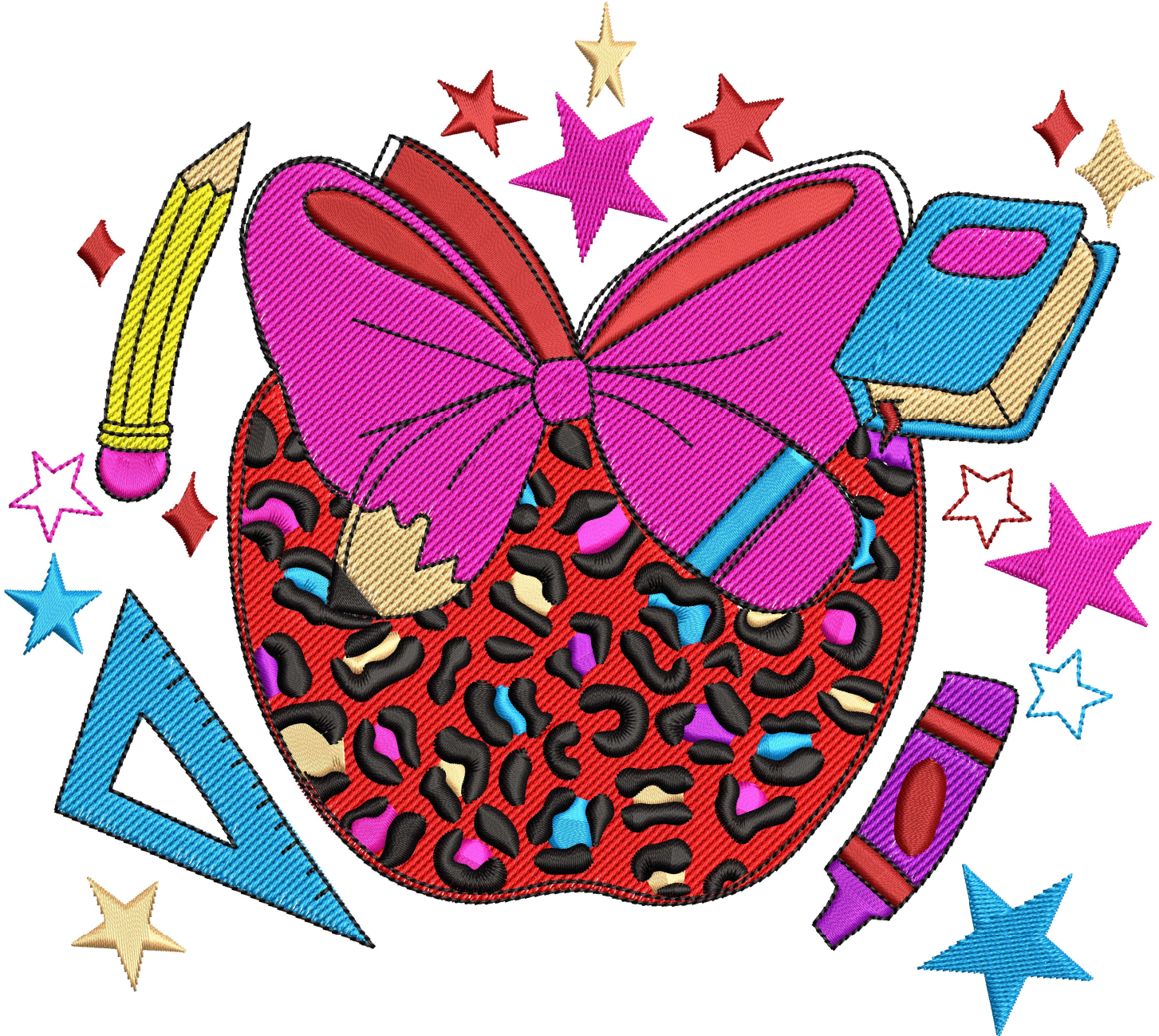
Wilcom EmbroideryStudio - Designing



Design: 7

Title:

Height: 171.4 mm
Width: 190.5 mm
Colors: 8
Colorway: Colorway 1
Zoom: 1:1



Product type:
Product:
Total qty:
Product colors:
Position:

Terms and Conditions:

Approved By:

Date:

Production Worksheet

Wilcom EmbroideryStudio - Designing



Design: 7

Title:

Stitches: 38,841
Height: 171.4 mm
Width: 190.5 mm
Colors: 8
Colorway: Colorway 1
Zoom: 1:1



Production Worksheet

Wilcom EmbroideryStudio - Designing



Design: **7**

Title:

Stitches: 38,841
 Height: 171.4 mm
 Width: 190.5 mm
 Colors: 8
 Colorway: Colorway 1
 Zoom: 1:1

Machine format: Tajima
 Color changes: 7
 Stops: 8
 Trims: 148
 Appliqués: 0
 Left: 97.1 mm
 Right: 93.4 mm
 Up: 68.5 mm
 Down: 102.9 mm
 EndX: 0.0 mm
 EndY: -72.0 mm
 Area 32650.9 mm²
 Max stitch: 12.1 mm
 Min stitch: 0.0 mm
 Max jump: 7.0 mm
 Total thread: 237.53m
 Total bobbin: 94.25m

Stop Sequence:

#	N#	Color	St.	Code	Name	Chart
1.	3		6,943	3	Red	Default
2.	1		7,903		R255 G9 B181	
3.	13		1,142	13	Purple	Default
4.	2		4,792		R2 G162 B255	
5.	11		2,251	11	Dark Red	Default
6.	16		2,337	16	Sand	Default
7.	4		715	4	Yellow	Default
8.	8		12,756	8	Black	Default

Color Film

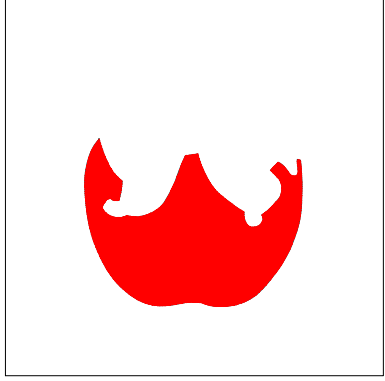
Wilcom EmbroideryStudio - Designing



Design: 7

Title:

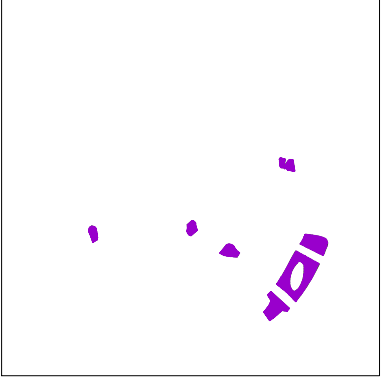
Stitches: 38,841
Height: 171.4 mm
Width: 190.5 mm
Colors: 8
Colorway: Colorway 1
Zoom: 0.25



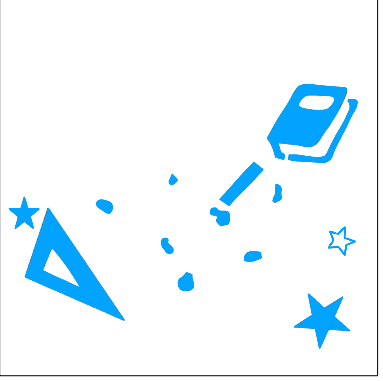
Stop #: 1
Element:
Code: 3
Name: Red
Chart: Default
Stitches: 6,943
Thread used: 48.21m



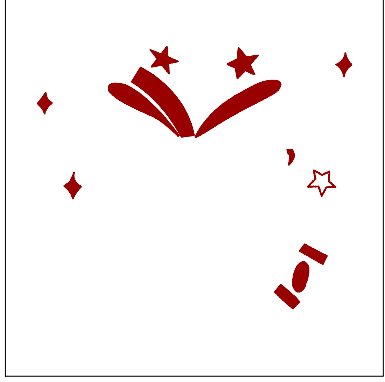
Stop #: 2
Element:
Code:
Name: R255 G9 B181
Chart:
Stitches: 7,903
Thread used: 49.39m



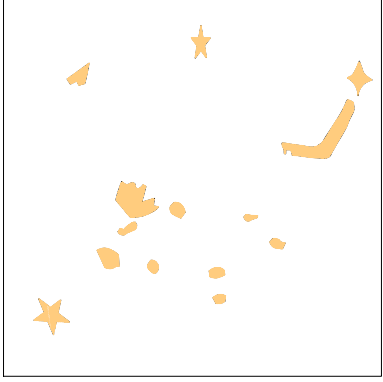
Stop #: 3
Element:
Code: 13
Name: Purple
Chart: Default
Stitches: 1,142
Thread used: 6.97m



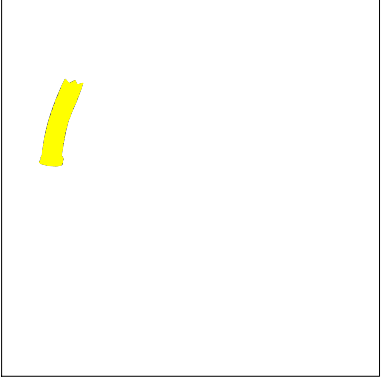
Stop #: 4
Element:
Code:
Name: R2 G162 B255
Chart:
Stitches: 4,792
Thread used: 28.71m



Stop #: 5
Element:
Code: 11
Name: Dark Red
Chart: Default
Stitches: 2,251
Thread used: 19.21m



Stop #: 6
Element:
Code: 16
Name: Sand
Chart: Default
Stitches: 2,337
Thread used: 13.91m



Stop #: 7
Element:
Code: 4
Name: Yellow
Chart: Default
Stitches: 715
Thread used: 4.37m



Stop #: 8
Element:
Code: 8
Name: Black
Chart: Default
Stitches: 12,756
Thread used: 65.96m

Production Summary

Wilcom EmbroideryStudio - Designing



Design: **7**

Title:

Stitches: 38,841
 Height: 171.4 mm
 Width: 190.5 mm
 Colors: 8



Machine format: Tajima
 Color changes: 7
 Stops: 8
 Trims: 148
 Hoop: <None>
 Max stitch: 12.1 mm
 Min stitch: 0.0 mm
 Max jump: 7.0 mm

Left: 97.1 mm
 Right: 93.4 mm
 Up: 68.5 mm
 Down: 102.9 mm
 EndX: 0.0 mm
 EndY: -72.0 mm
 Area: 32650.9 mm²
 Total thread: 237.53m
 Total bobbin: 94.25m

Colorway		Colorway 1	
Background			
Product		Blanks\Blank	
Stop	Color	Stitches	
1	3	6,943	3 Red Default
2	1	7,903	R255 G9 B181
3	13	1,142	13 Purple Default
4	2	4,792	R2 G162 B255
5	11	2,251	11 Dark Red Default
6	16	2,337	16 Sand Default
7	4	715	4 Yellow Default
8	8	12,756	8 Black Default